



Mont Albert

CITY OF WHITEHORSE- STATEMENT OF TREE SIGNIFICANCE

Property Address: 21 Black Street Mont Albert
Melways Ref: 46 K10
Survey Dates: 13.5.02 / March – April 2004

Tree No.	1	2	3
Tree Name	Eucalyptus citriodora Lemon Scented Gum	Eucalyptus citriodora Lemon Scented Gum	
Tree Size	Mature	Mature	
Height	20m	18m	
Spread	16m	14m	
Significance*	L	L	
Age (years)	30-60	30-60	
Condition*	G	G	
Notes	Location- Frontage This tree is a good quality specimen	Location- Frontage This tree is a good quality specimen	

* Significance: N-National, S-State, R-Regional, L- Local
 * Condition: E- Excellent, G-Good, F-Fair, P-Poor, D-Dead

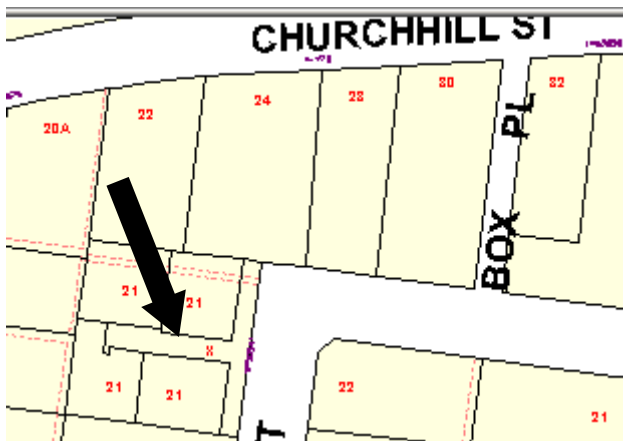
Criteria for Significance (please refer page x):

Historical significance		Rare/Localised distribution		Horticultural/Genetic Value		Particularly old
Curious growth form		Outstanding size		Outstanding Example of the Species		Unique environmental contribution
Unique Location/Context	✓	Aesthetic Value		Aboriginal Culture		

Statement of Significance:

The age and size of these trees provide an important contribution to the immediate landscape.

Map:



Photo(s):



CITY OF WHITEHORSE- STATEMENT OF TREE SIGNIFICANCE

Property Address: 24 Churchill St Mont Albert

Melways Ref: 47-A9

Survey Dates: 29.1.02 / March – April 2004

Tree No.	1	2	3
Tree Name	Ulmus glabra Weeping Elm		
Tree Size	Mature		
Height	14m		
Spread	12m		
Significance*	R		
Age (years)	30-60		
Condition*	G		
Notes	Location- East side This tree is a good quality specimen		

* Significance: N-National, S-State, R-Regional, L- Local

* Condition: E- Excellent, G-Good, F-Fair, P-Poor, D-Dead

Criteria for Significance (please refer page x):

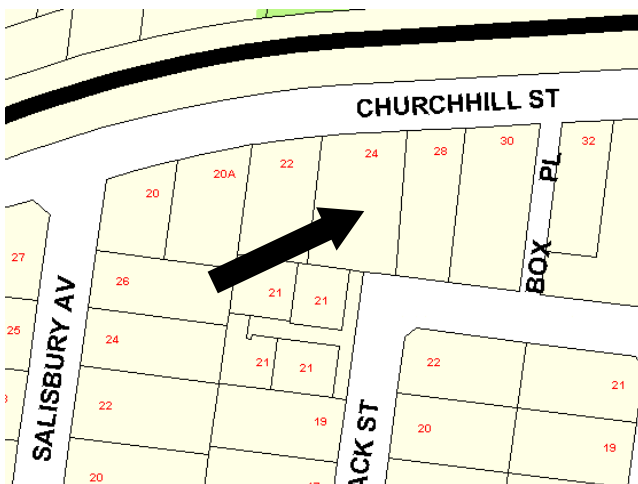
Historical significance		Rare/Localised distribution		Horticultural/Genetic Value		Particularly old
Curious growth form		Outstanding size		Outstanding Example of the Species		Unique environmental contribution
Unique Location/Context	✓	Aesthetic Value		Aboriginal Culture		

Statement of Significance:

The age and size of this tree provides an important contribution to the immediate landscape.

Map:

Photo(s):



CITY OF WHITEHORSE- STATEMENT OF TREE SIGNIFICANCE

Property Address: 58 Churchill St Mont Albert
Melways Ref: 47-A9
Survey Dates: 8.5.02 / March – April 2004

Tree No.	1	2, 3	
Tree Name	Eucalyptus nicholii Peppermint Gum	Eucalyptus citriodora Lemon Scented Gum	
Tree Size	Mature	Mature	
Height	16m	26m	
Spread	14m	16m	
Significance*	L	L	
Age (years)	30-60	30-60	
Condition*	G	G	
Notes	This tree is a good quality specimen	Location- Frontage These trees are good quality specimens	

* Significance: N-National, S-State, R-Regional, L- Local
 * Condition: E- Excellent, G-Good, F-Fair, P-Poor, D-Dead

Criteria for Significance (please refer page x):

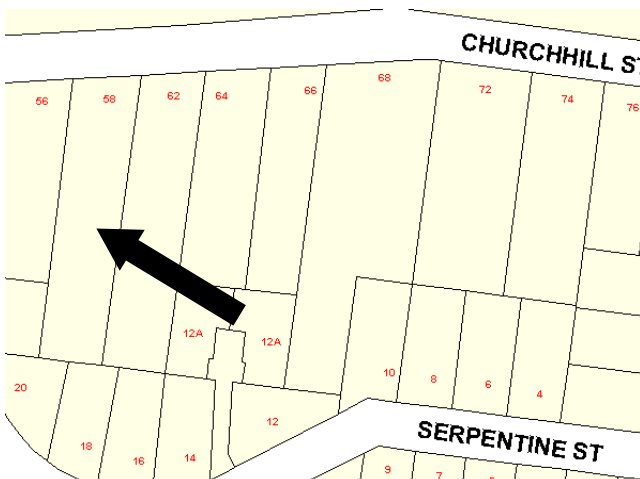
Historical significance		Rare/Localised distribution		Horticultural/Genetic Value		Particularly old
Curious growth form		Outstanding size		Outstanding Example of the Species		Unique environmental contribution
Unique Location/Context	✓	Aesthetic Value		Aboriginal Culture		

Statement of Significance:

The age and size of these trees provide an important contribution to the immediate landscape.

Map:

Photo(s):



CITY OF WHITEHORSE- STATEMENT OF TREE SIGNIFICANCE

Property Address: 1 Earle Close Mont Albert
Melways Ref: 46-K9
Survey Dates: 13.5.02 / March – April 2004

Tree No.	1	2	3
Tree Name	Quercus turkey Turkey Oak	Quercus coccinea Scarlet Oak	
Tree Size	Mature	Mature	
Height	18-20m	20m	
Spread	15m	16m	
Significance*	R	L	
Age (years)	30-60	30-60	
Condition*	G	G	
Notes	Location- Frontage This tree is a good quality specimen	Location- Rear (east) This tree is a good quality specimen	

* Significance: N-National, S-State, R-Regional, L- Local
 * Condition: E- Excellent, G-Good, F-Fair, P-Poor, D-Dead

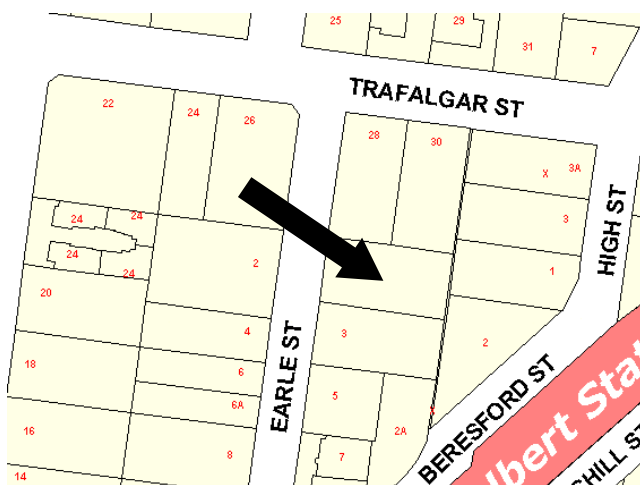
Criteria for Significance (please refer page x):

Historical significance		Rare/Localised distribution		Horticultural/Genetic Value		Particularly old
Curious growth form		Outstanding size		Outstanding Example of the Species		Unique environmental contribution
Unique Location/Context	✓	Aesthetic Value		Aboriginal Culture		

Statement of Significance:

The age and size of these trees provide an important contribution to the immediate landscape.

Map:



Photo(s):



NB: Changes made via Amendment C113, gazetted 29/03/2012

CITY OF WHITEHORSE- STATEMENT OF TREE SIGNIFICANCE

Property Address: ~~13 Grace Crt Mont Albert~~ 13 Grace Street, Mont Albert

Melways Ref: ~~46-K7~~ 46-K8

Survey Dates: 22.5.02 / March – April 2004

Tree No.	1	2	3
Tree Name	Ulmus glabra Ulmus glabra 'Lutescens' Scotch Elm Golden Elm		
Tree Size	Mature		
Height	14m		
Spread	14m		
Significance*	R		
Age (years)	30-60		
Condition*	G		
Notes	This tree is a good quality specimen. Landowner advises tree is regularly maintained to protect tree from Elm Leaf Beetle.		

* Significance: N-National, S-State, R-Regional, L- Local

* Condition: E- Excellent, G-Good, F-Fair, P-Poor, D-Dead

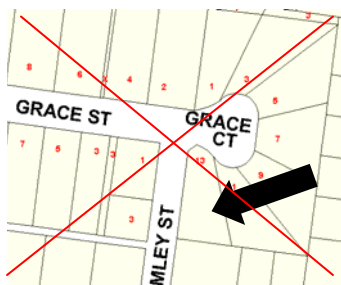
Criteria for Significance (see page 2 for explanation of criteria):

Historical significance		Rare/Localised distribution	Horticultural/Genetic Value	Particularly old
Curious growth form		Outstanding size	Outstanding Example of the Species	Unique environmental contribution
Unique Location/Context	✓	Aesthetic Value	Aboriginal Culture	

Statement of Significance:

The age and size of this tree provides an important contribution to the immediate landscape.

Map:



Photo(s):



CITY OF WHITEHORSE- STATEMENT OF TREE SIGNIFICANCE

This page is intentionally blank
Statement of Tree Significance deleted by Amendment C 83

CITY OF WHITEHORSE- STATEMENT OF TREE SIGNIFICANCE

Property Address: 5 Hood St Mont Albert
Melways Ref: 47-A9
Survey Dates: 23.1.02 / March – April 2004

Tree No.	1	2	3
Tree Name	Eucalyptus botroides Mahogany Gum		
Tree Size	Mature		
Height	11m		
Spread	7m		
Significance*	L		
Age (years)	30-60		
Condition*	F		
Notes	Location- Frontage This tree is a fair quality specimen.		

* Significance: N-National, S-State, R-Regional, L- Local
 * Condition: E- Excellent, G-Good, F-Fair, P-Poor, D-Dead

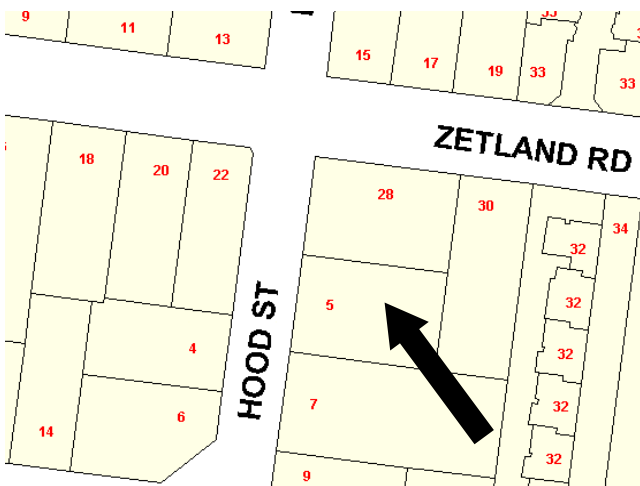
Criteria for Significance (please refer page x):

<input type="checkbox"/>	Historical significance	Rare/Localised distribution	Horticultural/Genetic Value	Particularly old
<input type="checkbox"/>	Curious growth form	Outstanding size	Outstanding Example of the Species	Unique environmental contribution
<input checked="" type="checkbox"/>	Unique Location/Context	Aesthetic Value	Aboriginal Culture	

Statement of Significance:

This is an indigenous habitat tree of local provenance, that is part of regional vegetation linkages. It provides a vegetation corridor for local bird-life and fauna. It acts as a vegetation source upon which re-vegetation and regeneration of indigenous flora can occur. This tree is integral to the establishment of a sustainable urban and native landscape.

Map:



Photo(s):



CITY OF WHITEHORSE- STATEMENT OF TREE SIGNIFICANCE

Property Address: 1 Malvern Road, Mont Albert
Melways Ref: 47-A8
Survey Dates: 08.05.02 / March – April 2004

Tree No.	1	2	3
Tree Name	Quercus robur English Oak		
Tree Size	Mature		
Height	18m		
Spread	18m		
Significance*	R		
Age (years)	30-60		
Condition*	G		
Notes	Location- Frontage This tree is a good quality specimen		

* Significance: N-National, S-State, R-Regional, L- Local
 * Condition: E- Excellent, G-Good, F-Fair, P-Poor, D-Dead

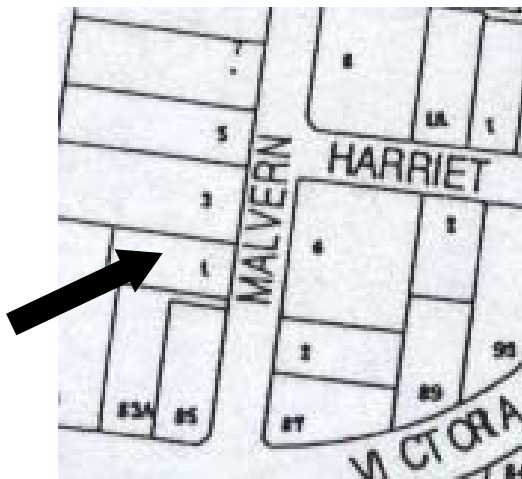
Criteria for Significance (please refer page x):

Historical significance		Rare/Localised distribution		Horticultural/Genetic Value		Particularly old
Curious growth form		Outstanding size		Outstanding Example of the Species		Unique environmental contribution
Unique Location/Context	✓	Aesthetic Value		Aboriginal Culture		

Statement of Significance:

The age and size of this tree provides an important contribution to the immediate landscape.

Map:



Photo(s):



CITY OF WHITEHORSE- STATEMENT OF TREE SIGNIFICANCE

Property Address: 9 Marlborough St Mont Albert
Melways Ref: 46-J9
Survey Dates: 22.5.02 / March – April 2004

Tree No.	1	2	3
Tree Name	Quercus robur English Oak		
Tree Size	Mature		
Height	16m		
Spread	12m		
Significance*	R		
Age (years)	60-100		
Condition*	G		
Notes	Location- Frontage (east) Submission states tree is 80+ years		

* Significance: N-National, S-State, R-Regional, L- Local
 * Condition: E- Excellent, G-Good, F-Fair, P-Poor, D-Dead

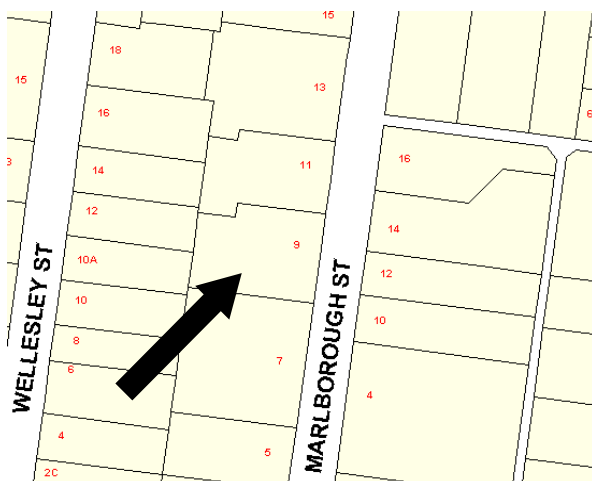
Criteria for Significance (please refer page x):

Historical significance		Rare/Localised distribution		Horticultural/Genetic Value		Particularly old
Curious growth form		Outstanding size		Outstanding Example of the Species		Unique environmental contribution
Unique Location/Context	✓	Aesthetic Value		Aboriginal Culture		

Statement of Significance:

The age and size of this tree provides an important contribution to the immediate landscape.

Map:



Photo(s):



CITY OF WHITEHORSE- STATEMENT OF TREE SIGNIFICANCE

Property Address: 13 Marlborough St Mont Albert
Melways Ref: 46-J9
Survey Dates: 12.5.02 / March – April 2004

Tree No.	1	2	3
Tree Name	Eucalyptus citriodora Lemon Scented Gum		
Tree Size	Mature		
Height	28m		
Spread	16m		
Significance*	L		
Age (years)	30-60		
Condition*	G		
Notes	Location- Frontage (north-east) This tree is a good quality specimen		

* Significance: N-National, S-State, R-Regional, L- Local
 * Condition: E- Excellent, G-Good, F-Fair, P-Poor, D-Dead

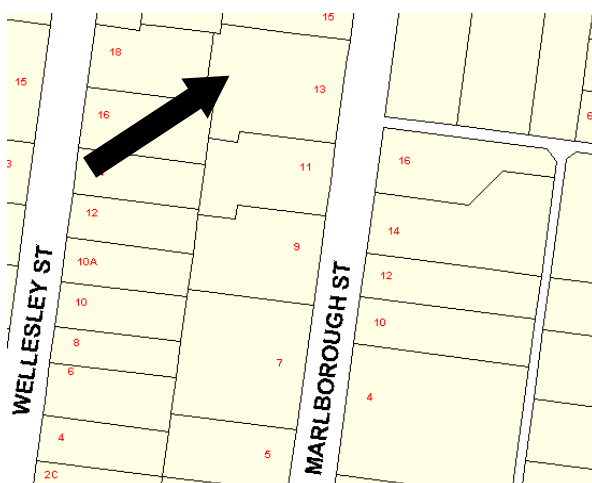
Criteria for Significance (please refer page x):

Historical significance		Rare/Localised distribution		Horticultural/Genetic Value		Particularly old
Curious growth form		Outstanding size		Outstanding Example of the Species		Unique environmental contribution
Unique Location/Context	✓	Aesthetic Value		Aboriginal Culture		

Statement of Significance:

The age and size of this tree provides an important contribution to the immediate landscape.

Map:



Photo(s):



CITY OF WHITEHORSE- STATEMENT OF TREE SIGNIFICANCE

Property Address: 410 Mont Albert Rd Mont Albert
Melways Ref: 47-A10
Survey Dates: 9.5.02 / March – April 2004

Tree No.	1	2	3
Tree Name	Eucalyptus citriodora Lemon Scented Gum		
Tree Size	Mature		
Height	20m		
Spread	14m		
Significance*	L		
Age (years)	30-60		
Condition*	G		
Notes	Location- Common property, east side (3 unit development) This tree is a good quality specimen.		

* Significance: N-National, S-State, R-Regional, L- Local
 * Condition: E- Excellent, G-Good, F-Fair, P-Poor, D-Dead

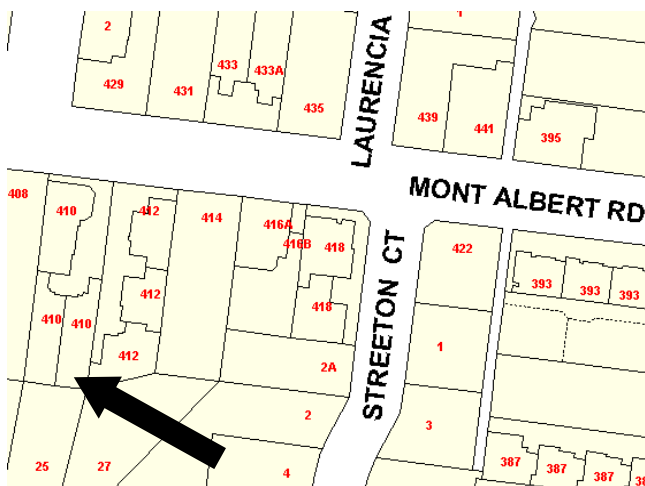
Criteria for Significance (please refer page x):

Historical significance		Rare/Localised distribution		Horticultural/Genetic Value		Particularly old
Curious growth form		Outstanding size		Outstanding Example of the Species		Unique environmental contribution
Unique Location/Context	✓	Aesthetic Value		Aboriginal Culture		

Statement of Significance:

The age and size of this tree provides an important contribution to the immediate landscape.

Map:



Photo(s):



CITY OF WHITEHORSE- STATEMENT OF TREE SIGNIFICANCE

Property Address: 13 Proudfoot St Mont Albert
Melways Ref: 47-A10
Survey Dates: 13.5.02 / March – April 2004

Tree No.	1	2	3
Tree Name	Eucalyptus citriodora Lemon Scented Gum		
Tree Size	Mature		
Height	27m		
Spread	16m		
Significance*	L		
Age (years)	30-60		
Condition*	G		
Notes	This tree is a good quality specimen		

* Significance: N-National, S-State, R-Regional, L- Local
 * Condition: E- Excellent, G-Good, F-Fair, P-Poor, D-Dead

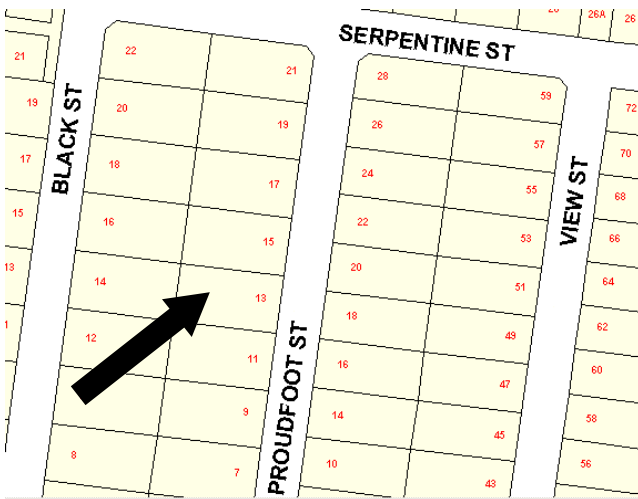
Criteria for Significance (please refer page x):

Historical significance		Rare/Localised distribution		Horticultural/Genetic Value		Particularly old
Curious growth form		Outstanding size		Outstanding Example of the Species		Unique environmental contribution
Unique Location/Context	✓	Aesthetic Value		Aboriginal Culture		

Statement of Significance:

The age and size of this tree provides an important contribution to the immediate landscape.

Map:



Photo(s):



CITY OF WHITEHORSE- STATEMENT OF TREE SIGNIFICANCE

Property Address: 11 Rostrevor Pde Mont Albert
Melways Ref: 46-K7
Survey Dates: 13.5.02 / March – April 2004

Tree No.	1	2	3
Tree Name	Syngium leuhmanii Lilly Pilly		
Tree Size	Mature		
Height	18m		
Spread	13m		
Significance*	R		
Age (years)	30-60		
Condition*	G		
Notes	This tree is a good quality specimen.		

* Significance: N-National, S-State, R-Regional, L- Local
 * Condition: E- Excellent, G-Good, F-Fair, P-Poor, D-Dead

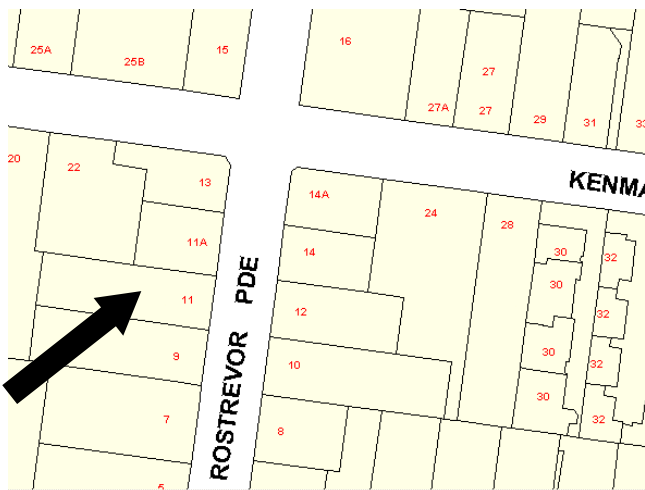
Criteria for Significance (please refer page x):

Historical significance		Rare/Localised distribution		Horticultural/Genetic Value		Particularly old
Curious growth form		Outstanding size		Outstanding Example of the Species		Unique environmental contribution
Unique Location/Context	✓	Aesthetic Value		Aboriginal Culture		

Statement of Significance:

The age and size of this tree provides an important contribution to the immediate landscape.

Map:



Photo(s):



CITY OF WHITEHORSE- STATEMENT OF TREE SIGNIFICANCE

Property Address: 4 Salisbury Ave Mont Albert
Melways Ref: 46-K10
Survey Dates: 11.2.02 / March – April 2004

Tree No.	1	2	3
Tree Name	Quercus robur English Oak	Eucalyptus sp.	
Tree Size	Mature	Mature	
Height	14m	5m	
Spread	18m	5m	
Significance*	R	L	
Age (years)	30-60	30-60	
Condition*	G	G	
Notes	Location- Rear, NE corner This tree is a good quality specimen	Location- Frontage This tree is a good quality specimen	

* Significance: N-National, S-State, R-Regional, L- Local
 * Condition: E- Excellent, G-Good, F-Fair, P-Poor, D-Dead

Criteria for Significance (please refer page x):

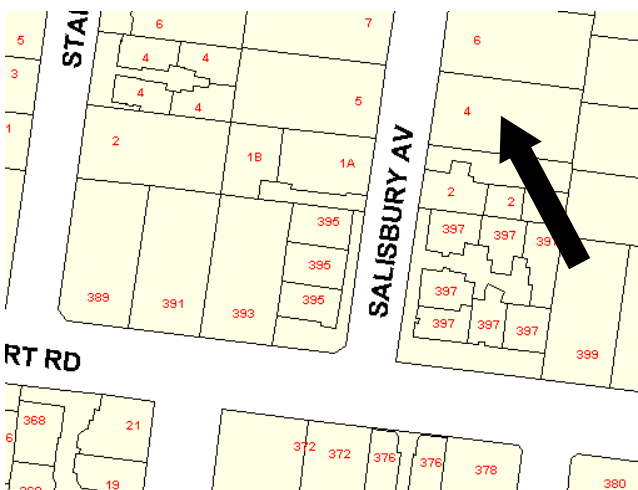
Historical significance		Rare/Localised distribution		Horticultural/Genetic Value	Particularly old
Curious growth form		Outstanding size		Outstanding Example of the Species	Unique environmental contribution
Unique Location/Context	✓	Aesthetic Value		Aboriginal Culture	

Statement of Significance:

The age and size of these trees provide an important contribution to the immediate landscape.

Map:

Photo(s):



CITY OF WHITEHORSE- STATEMENT OF TREE SIGNIFICANCE

Property Address: 6 St Georges Ave Mont Albert
Melways Ref: 46-K11
Survey Dates: 28.4.02 / March – April 2004

Tree No.	1	2	3
Tree Name	Eucalyptus citriodora Lemon Scented Gum		
Tree Size	Mature		
Height	20-22m		
Spread	22m		
Significance*	R		
Age (years)	60-100		
Condition*	G		
Notes	Location- Frontage This tree is a good quality specimen		

* Significance: N-National, S-State, R-Regional, L- Local
 * Condition: E- Excellent, G-Good, F-Fair, P-Poor, D-Dead

Criteria for Significance (please refer page x):

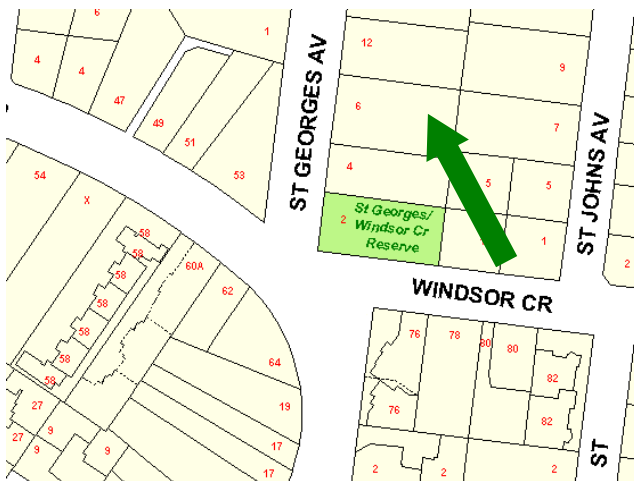
Historical significance		Rare/Localised distribution		Horticultural/Genetic Value		Particularly old
Curious growth form		Outstanding size		Outstanding Example of the Species		Unique environmental contribution
Unique Location/Context	✓	Aesthetic Value		Aboriginal Culture		

Statement of Significance:

The age and size of this tree provides an important contribution to the immediate landscape.

Map:

Photo(s):



CITY OF WHITEHORSE- STATEMENT OF TREE SIGNIFICANCE

Property Address: 6 St James Ave Mont Albert
Melways Ref: 47-A11
Survey Dates: 26.3.02 / March – April 2004

Tree No.	1	2	3
Tree Name	Gingko Biloba Tulip tree		
Tree Size	Mature		
Height	20m		
Spread	8m		
Significance*	R		
Age (years)	60-100		
Condition*	G		
Notes	Location- Rear yard, east This tree is a good quality specimen		

* Significance: N-National, S-State, R-Regional, L- Local
 * Condition: E- Excellent, G-Good, F-Fair, P-Poor, D-Dead

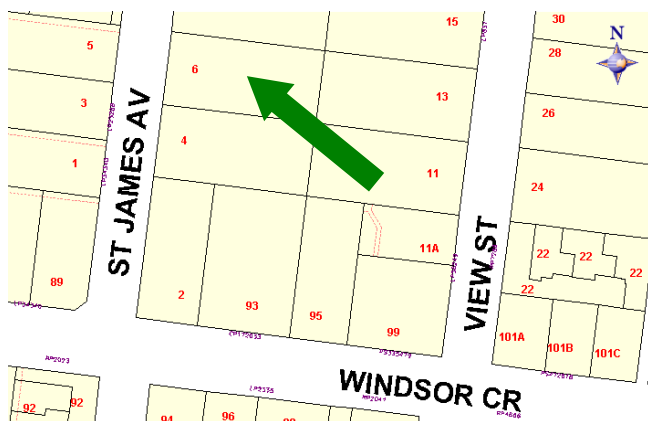
Criteria for Significance (please refer page x):

Historical significance		Rare/Localised distribution		Horticultural/Genetic Value		Particularly old
Curious growth form		Outstanding size		Outstanding Example of the Species		Unique environmental contribution
Unique Location/Context	✓	Aesthetic Value		Aboriginal Culture		

Statement of Significance:

The age and size of this tree provides an important contribution to the immediate landscape.

Map:



Photo(s):



CITY OF WHITEHORSE- STATEMENT OF TREE SIGNIFICANCE

Property Address: 17 St Johns Ave Mont Albert

Melways Ref: 46-K11

Survey Dates: 29.1.02 / June 28, 2005

Tree No.	1	2	3
Tree Name	Eucalyptus leucoxydon subsp. leucoxydon Yellow Gum	Araucarya bidwilli Bunya Bunya	Quercus robur English Oak
Tree Size	Mature	Mature	Mature
Height	23m	12m	15m
Spread	20m	16m	18m
Significance*	R	L	L
Age (years)	60-100 (70-80 years approx)	60-100 (80 to 100 years approx)	60-100 (80-100 years approx)
Condition*	G	G	G
Notes	Location- Near the northern boundary between St Johns and St Georges Avenue One of the best examples of the species encountered by the consultant	Location- on St Johns Avenue frontage. This tree is of particular significance and would have been an original planting.	Location- on St Johns Avenue frontage Whilst not rare, this tree makes a significant contribution to the streetscape and overall landscape.
Tree No.	4	5	
Tree Name	Quercus robur English Oak	Phoenix canariensis Canary Island Date Palm	
Tree Size	Mature	Mature	
Height	15m	10m	
Spread	18m	6m	
Significance*	L	L	
Age (years)	60-100 (80 to 100 years approx)	60-100 (60 to 70 years approx)	
Condition*	G	G	
Notes	Location- on St James Avenue frontage Whilst not rare, this tree makes a significant contribution to the streetscape and overall landscape due to its size and condition.	Location- near St James Avenue frontage Whilst not rare, this tree makes a significant contribution to the streetscape and overall landscape.	

* Significance: N-National, S-State, R-Regional, L- Local

* Condition: E- Excellent, G-Good, F-Fair, P-Poor, D-Dead

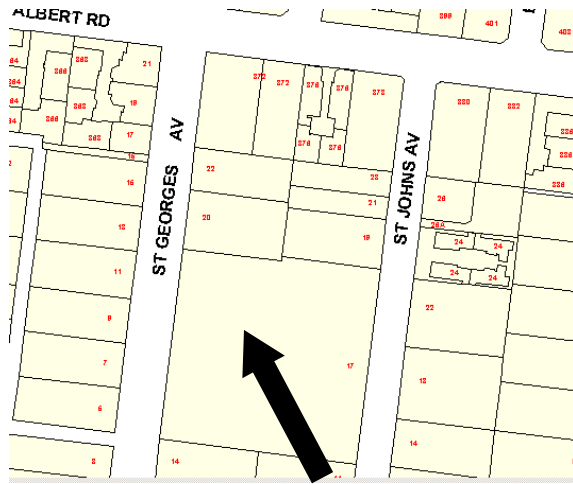
Criteria for Significance (please refer page x):

Historical significance		Rare/Localised distribution		Horticultural/Genetic Value		Particularly old
Curious growth form		Outstanding size		Outstanding Example of the Species		Unique environmental contribution
Unique Location/Context	✓	Aesthetic Value		Aboriginal Culture		

Statement of Significance:

The age and size of these trees provide an important contribution to the streetscape and overall landscape.

Map:



Photos:



Tree 1



Tree 2



Tree 3



Tree 4



Tree 5

CITY OF WHITEHORSE- STATEMENT OF TREE SIGNIFICANCE

Property Address: 22 Trafalgar St Mont Albert
Melways Ref: 46-J9
Survey Dates: 13.5.02, 13.3.02 / March – April 2004

Tree No.	1	2	3
Tree Name	Quercus robur English Oak	Quercus robur English Oak	
Tree Size	Mature	Mature	
Height	15m	16m	
Spread	15m	12-14m	
Significance*	R	R	
Age (years)	30-60	30-60	
Condition*	G	G	
Notes	Location- Frontage, NW corner Wolsely St This tree is a good quality specimen	Location- Frontage, NW corner Wolsely St This tree is a good quality specimen, however has been lopped east over 24 Trafalgar Street.	

* Significance: N-National, S-State, R-Regional, L- Local
 * Condition: E- Excellent, G-Good, F-Fair, P-Poor, D-Dead

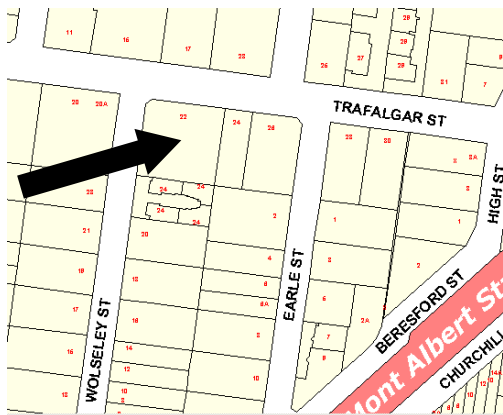
Criteria for Significance (please refer page x):

Historical significance		Rare/Localised distribution		Horticultural/Genetic Value		Particularly old
Curious growth form		Outstanding size		Outstanding Example of the Species		Unique environmental contribution
Unique Location/Context	✓	Aesthetic Value		Aboriginal Culture		

Statement of Significance:

The age and size of this tree provides an important contribution to the immediate landscape.

Map:



Photo(s):



CITY OF WHITEHORSE- STATEMENT OF TREE SIGNIFICANCE

Property Address: 42 Victoria Cres Mont Albert
Melways Ref: 46-K8
Survey Dates: 13.1.02 / March – April 2004

Tree No.	1	2	3
Tree Name	Quercus palustris Pin Oak		
Tree Size	Mature		
Height	18m		
Spread	12m		
Significance*	R		
Age (years)	30-60		
Condition*	G		
Notes	Location- Rear, south boundary This tree is a good quality specimen		

* Significance: N-National, S-State, R-Regional, L- Local
 * Condition: E- Excellent, G-Good, F-Fair, P-Poor, D-Dead

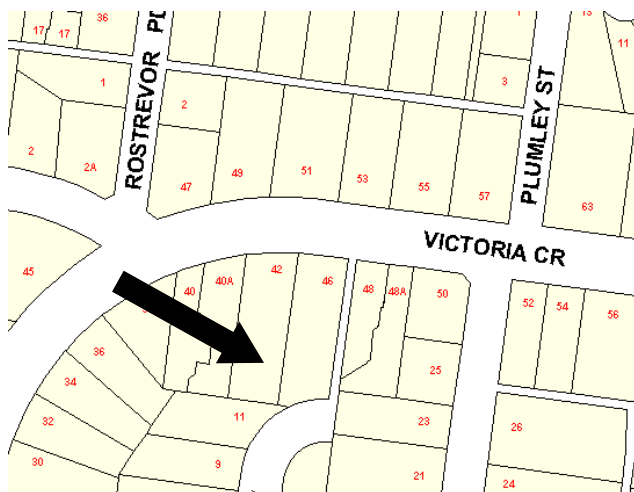
Criteria for Significance (please refer page x):

Historical significance		Rare/Localised distribution		Horticultural/Genetic Value		Particularly old
Curious growth form		Outstanding size		Outstanding Example of the Species		Unique environmental contribution
Unique Location/Context	✓	Aesthetic Value		Aboriginal Culture		

Statement of Significance:

The age and size of this tree provides an important contribution to the immediate landscape.

Map:



Photo(s):



CITY OF WHITEHORSE- STATEMENT OF TREE SIGNIFICANCE

Property Address: 57 Victoria Cres Mont Albert
Melways Ref: 46-K8
Survey Dates: 13.5.02 / March – April 2004

Tree No.	1	2	3
Tree Name	Quercus robur English Oak		
Tree Size	Mature		
Height	12m		
Spread	14m		
Significance*	R		
Age (years)	30-60		
Condition*	G		
Notes	Location- Rear yard (east side) This tree is a good quality specimen		

* Significance: N-National, S-State, R-Regional, L- Local
 * Condition: E- Excellent, G-Good, F-Fair, P-Poor, D-Dead

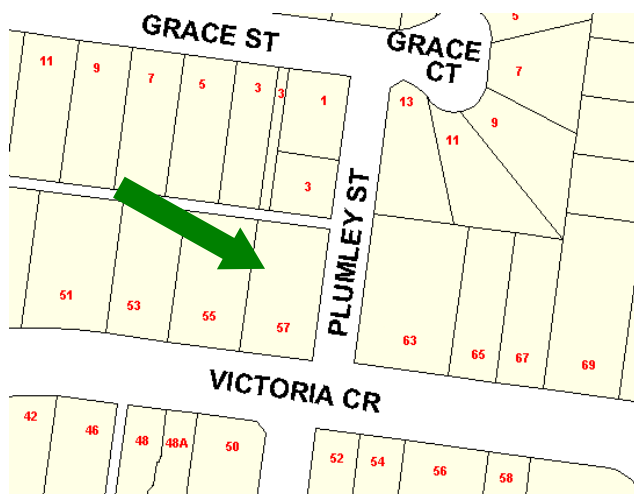
Criteria for Significance (please refer page x):

Historical significance		Rare/Localised distribution		Horticultural/Genetic Value		Particularly old
Curious growth form		Outstanding size		Outstanding Example of the Species		Unique environmental contribution
Unique Location/Context	✓	Aesthetic Value		Aboriginal Culture		

Statement of Significance:

The age and size of this tree provides an important contribution to the immediate landscape.

Map:



Photo(s):



CITY OF WHITEHORSE- STATEMENT OF TREE SIGNIFICANCE

Property Address: 5 Whyte Grove Mont Albert (also 7 Whyte Grove)

Melways Ref: 46-K8

Survey Dates: 13.3.02 / March – April 2004

Tree No.	1	2	3
Tree Name	Quercus robur English Oak		
Tree Size	Mature		
Height	20m		
Spread	20m		
Significance*	R		
Age (years)	30-60		
Condition*	G		
Notes	Location- Frontage (east). Located on boundary with number 7 Whyte Grove This tree is a good quality specimen		

* Significance: N-National, S-State, R-Regional, L- Local

* Condition: E- Excellent, G-Good, F-Fair, P-Poor, D-Dead

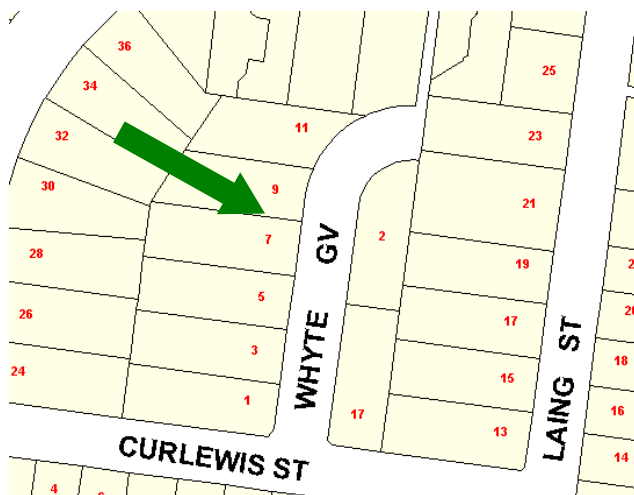
Criteria for Significance (please refer page x):

Historical significance		Rare/Localised distribution		Horticultural/Genetic Value		Particularly old
Curious growth form		Outstanding size		Outstanding Example of the Species		Unique environmental contribution
Unique Location/Context	✓	Aesthetic Value		Aboriginal Culture		

Statement of Significance:

The age and size of this tree provides an important contribution to the immediate landscape.

Map:



Photo(s):



CITY OF WHITEHORSE- STATEMENT OF TREE SIGNIFICANCE

Property Address: 7 Whyte Grove Mont Albert (also 5 Whyte Grove)

Melways Ref: 46-K8

Survey Dates: 13.3.02 / March – April 2004

Tree No.	1	2	3
Tree Name	Quercus robur English Oak		
Tree Size	Mature		
Height	20m		
Spread	20m		
Significance*	R		
Age (years)	30-60		
Condition*	G		
Notes	Location- Frontage (east). Located on boundary with number 5 Whyte Grove This tree is a good quality specimen		

* Significance: N-National, S-State, R-Regional, L- Local

* Condition: E- Excellent, G-Good, F-Fair, P-Poor, D-Dead

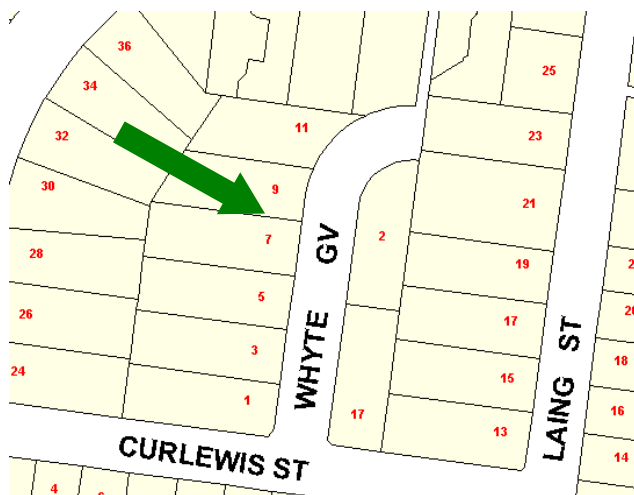
Criteria for Significance (please refer page x):

Historical significance		Rare/Localised distribution		Horticultural/Genetic Value		Particularly old
Curious growth form		Outstanding size		Outstanding Example of the Species		Unique environmental contribution
Unique Location/Context	✓	Aesthetic Value		Aboriginal Culture		

Statement of Significance:

The age and size of this tree provides an important contribution to the immediate landscape.

Map:



Photo(s):



CITY OF WHITEHORSE- STATEMENT OF TREE SIGNIFICANCE

Property Address: 51A Zetland Rd Mont Albert
Melways Ref: 46-K9
Survey Dates: 3.5.02 / March – April 2004

Tree No.	1	2	3
Tree Name	Eucalyptus citriodora Lemon Scented Gum	Eucalyptus citriodora Lemon Scented Gum	
Tree Size	Mature	Mature	
Height	18m	26m	
Spread	15m	15m	
Significance*	L	L	
Age (years)	30-60	30-60	
Condition*	G	G	
Notes	This tree is a good quality specimen	This tree is a good quality specimen	

* Significance: N-National, S-State, R-Regional, L- Local
 * Condition: E- Excellent, G-Good, F-Fair, P-Poor, D-Dead

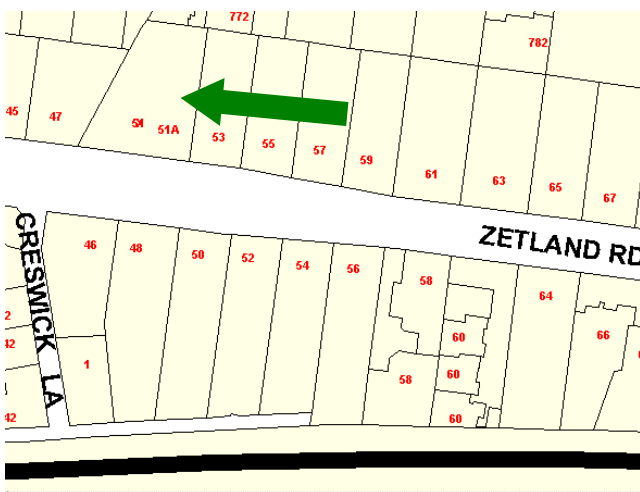
Criteria for Significance (please refer page x):

Historical significance		Rare/Localised distribution		Horticultural/Genetic Value		Particularly old
Curious growth form		Outstanding size		Outstanding Example of the Species		Unique environmental contribution
Unique Location/Context	✓	Aesthetic Value		Aboriginal Culture		

Statement of Significance:

The age and size of these trees provide an important contribution to the immediate landscape.

Map:



Photo(s):





Mont Albert North

CITY OF WHITEHORSE- STATEMENT OF TREE SIGNIFICANCE

Property Address: 48 Bundoran Pde Mont Albert North
Melways Ref: 46-K7
Survey Dates: 13.5.02 / March – April 2004

Tree No.	1	2	3
Tree Name	Cupressus torulosa Himalayan Cypress		
Tree Size	Mature		
Height	25m		
Spread	8m		
Significance*	R		
Age (years)	30-60		
Condition*	G		
Notes	Location- Frontage, central This tree is a good quality specimen		

* Significance: N-National, S-State, R-Regional, L- Local
 * Condition: E- Excellent, G-Good, F-Fair, P-Poor, D-Dead

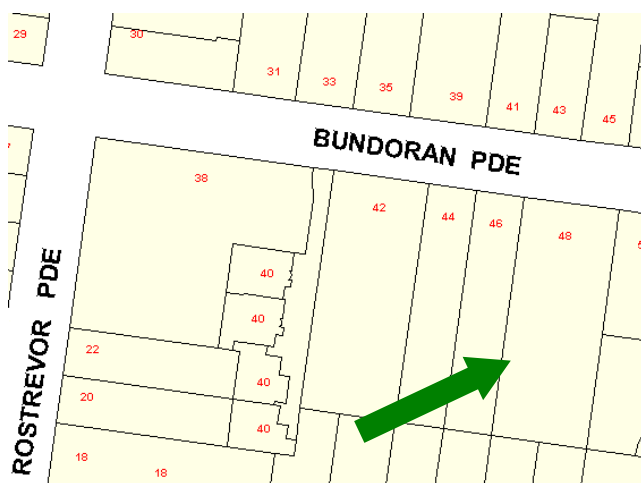
Criteria for Significance (please refer page x):

Historical significance		Rare/Localised distribution		Horticultural/Genetic Value		Particularly old
Curious growth form		Outstanding size		Outstanding Example of the Species		Unique environmental contribution
Unique Location/Context	✓	Aesthetic Value		Aboriginal Culture		

Statement of Significance:

The age and size of this tree provides an important contribution to the immediate landscape.

Map:



Photo(s):



CITY OF WHITEHORSE- STATEMENT OF TREE SIGNIFICANCE

Property Address: 51 Relowe St Mont Albert North
Melways Ref: 46-K5
Survey Dates: 13.3.02 / March – April 2004

Tree No.	1	2	3
Tree Name	Quercus robur English Oak		
Tree Size	Mature		
Height	20m		
Spread	10m		
Significance*	R		
Age (years)	30-60		
Condition*	G		
Notes	Location- Front, east side boundary This tree is a good quality specimen.		

* Significance: N-National, S-State, R-Regional, L- Local
 * Condition: E- Excellent, G-Good, F-Fair, P-Poor, D-Dead

Criteria for Significance (please refer page x):

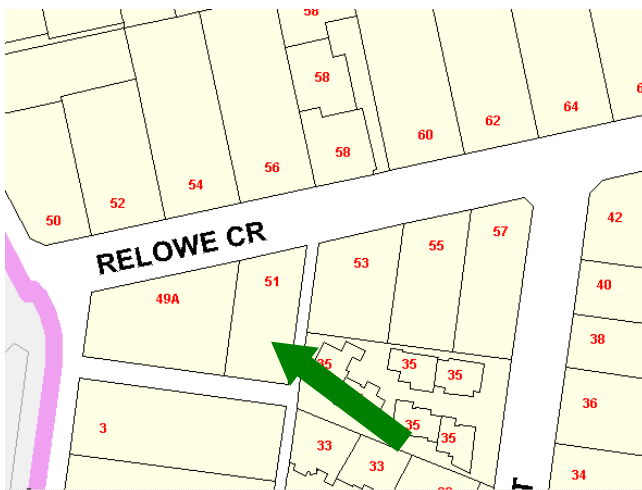
Historical significance		Rare/Localised distribution		Horticultural/Genetic Value		Particularly old
Curious growth form		Outstanding size		Outstanding Example of the Species		Unique environmental contribution
Unique Location/Context	✓	Aesthetic Value		Aboriginal Culture		

Statement of Significance:

The age and size of this tree provides an important contribution to the immediate landscape.

Map:

Photo(s):



CITY OF WHITEHORSE- STATEMENT OF TREE SIGNIFICANCE

Property Address: 55 Relowe St Mont Albert North
Melways Ref: 46-K5
Survey Dates: 20.1.02 / March – April 2004

Tree No.	1	2	3
Tree Name	Quercus palustris Pin Oak		
Tree Size	Mature		
Height	20m		
Spread	20m		
Significance*	R		
Age (years)	60-100		
Condition*	G		
Notes	Location- Frontage, east side boundary This tree is a good quality specimen		

* Significance: N-National, S-State, R-Regional, L- Local
 * Condition: E- Excellent, G-Good, F-Fair, P-Poor, D-Dead

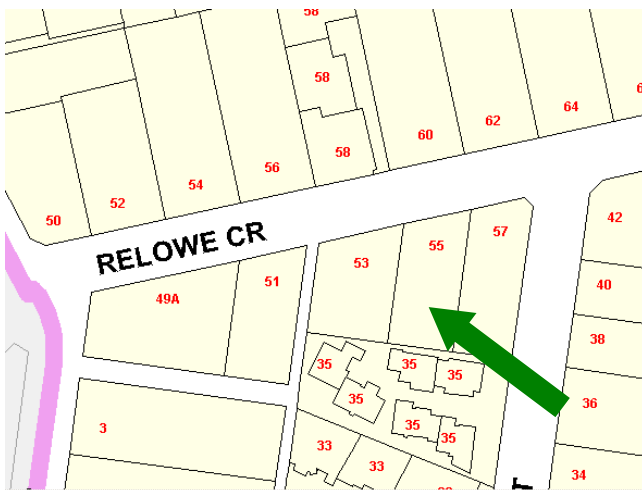
Criteria for Significance (please refer page x):

Historical significance		Rare/Localised distribution		Horticultural/Genetic Value		Particularly old
Curious growth form		Outstanding size		Outstanding Example of the Species		Unique environmental contribution
Unique Location/Context	✓	Aesthetic Value		Aboriginal Culture		

Statement of Significance:

The age and size of this tree provides an important contribution to the immediate landscape.

Map:



Photo(s):



CITY OF WHITEHORSE- STATEMENT OF TREE SIGNIFICANCE

Property Address: 74 Strabane Ave Mont Albert North
Melways Ref: 46-K6
Survey Dates: 22.5.02 / March – April 2004

Tree No.	1	2	3
Tree Name	Quercus robur English Oak		
Tree Size	Mature		
Height	18m		
Spread	16m		
Significance*	R		
Age (years)	30-60		
Condition*	G		
Notes	This tree is a good quality specimen.		

* Significance: N-National, S-State, R-Regional, L- Local
 * Condition: E- Excellent, G-Good, F-Fair, P-Poor, D-Dead

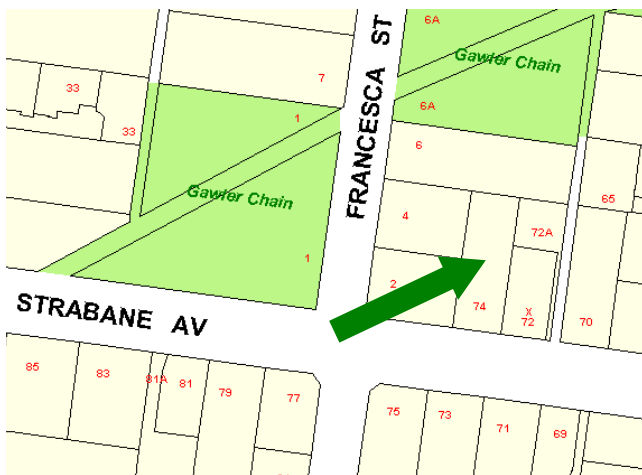
Criteria for Significance (please refer page x):

Historical significance		Rare/Localised distribution		Horticultural/Genetic Value		Particularly old
Curious growth form		Outstanding size		Outstanding Example of the Species		Unique environmental contribution
Unique Location/Context	✓	Aesthetic Value		Aboriginal Culture		

Statement of Significance:

The age and size of this tree provides an important contribution to the immediate landscape.

Map:



Photo(



CITY OF WHITEHORSE- STATEMENT OF TREE SIGNIFICANCE

Property Address: 21 Tyrrell St Mont Albert North
Melways Ref: 47-A5
Survey Dates: 11.5.02 / March – April 2004

Tree No.	1	2	3
Tree Name	Eucalyptus citriodora Lemon Scented Gum		
Tree Size	Mature		
Height	24m		
Spread	18m		
Significance*	L		
Age (years)	30-60		
Condition*	G		
Notes	Location- Frontage This tree is a good quality specimen		

* Significance: N-National, S-State, R-Regional, L- Local
 * Condition: E- Excellent, G-Good, F-Fair, P-Poor, D-Dead

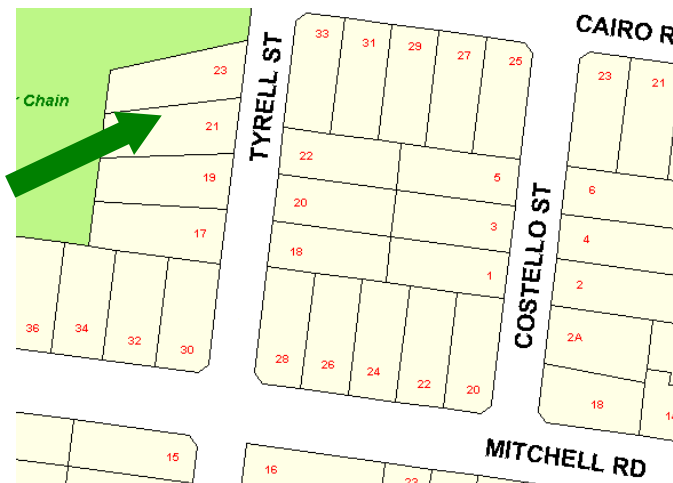
Criteria for Significance (please refer page x):

Historical significance		Rare/Localised distribution		Horticultural/Genetic Value		Particularly old
Curious growth form		Outstanding size		Outstanding Example of the Species		Unique environmental contribution
Unique Location/Context	✓	Aesthetic Value		Aboriginal Culture		

Statement of Significance:

The age and size of this tree provides an important contribution to the immediate landscape.

Map:



Photo(s):

