



Blackburn South

CITY OF WHITEHORSE- STATEMENT OF TREE SIGNIFICANCE

Property Address: 65 Baratta St Blackburn Sth
Melways Ref: 61-H3
Survey Dates: 3.5.02 / March – April 2004

Tree No.	1	2	3
Tree Name	Eucalyptus citriodora Lemon Scented Gum		
Tree Size	Mature		
Height	20m		
Spread	18m		
Significance*	L		
Age (years)	30-60		
Condition*	G		
Notes	Location- Rear, west side boundary This tree is a good quality specimen		

* Significance: N-National, S-State, R-Regional, L- Local
 * Condition: E- Excellent, G-Good, F-Fair, P-Poor, D-Dead

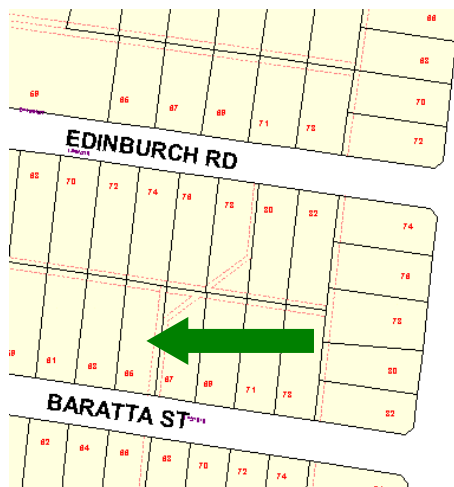
Criteria for Significance (please refer page x):

Historical significance		Rare/Localised distribution		Horticultural/Genetic Value		Particularly old
Curious growth form		Outstanding size		Outstanding Example of the Species		Unique environmental contribution
Unique Location/Context	✓	Aesthetic Value		Aboriginal Culture		

Statement of Significance:

The age and size of this tree provides an important contribution to the immediate landscape.

Map:



Photo(s):



CITY OF WHITEHORSE- STATEMENT OF TREE SIGNIFICANCE

Property Address: 26 Dobell St Blackburn Sth
Melways Ref: 61-K4
Survey Dates: 16.5.02 / March – April 2004

Tree No.	1	2	3
Tree Name	Eucalyptus nicholii Peppermint Gum		
Tree Size	Mature		
Height	14m		
Spread	10m		
Significance*	L		
Age (years)	30-60		
Condition*	G		
Notes	This tree is a good quality specimen.		

* Significance: N-National, S-State, R-Regional, L- Local
 * Condition: E- Excellent, G-Good, F-Fair, P-Poor, D-Dead

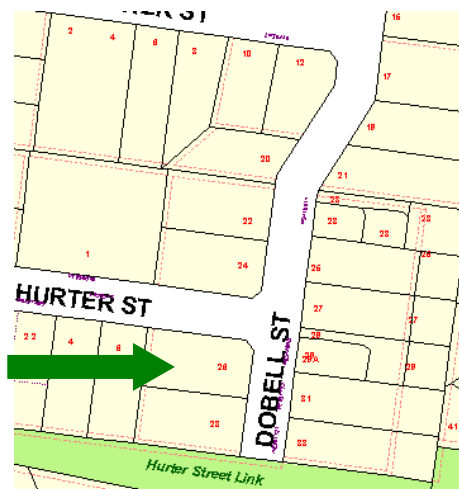
Criteria for Significance (please refer page x):

Historical significance		Rare/Localised distribution		Horticultural/Genetic Value		Particularly old
Curious growth form		Outstanding size		Outstanding Example of the Species		Unique environmental contribution
Unique Location/Context	✓	Aesthetic Value		Aboriginal Culture		

Statement of Significance:

The age and size of this tree provides an important contribution to the immediate landscape.

Map:



Photo(s):



CITY OF WHITEHORSE- STATEMENT OF TREE SIGNIFICANCE

Property Address: 31 Dobell St Blackburn Sth

Melways Ref: 61-K4

Survey Dates: 16.5.02 / March – April 2004

Tree No.	1	2	3
Tree Name	Eucalyptus citriodora Lemon Scented Gum		
Tree Size	Mature		
Height	16m		
Spread	16m		
Significance*	L		
Age (years)	30-60		
Condition*	G		
Notes	Location- Frontage, NW corner This tree is a good quality specimen.		

* Significance: N-National, S-State, R-Regional, L- Local

* Condition: E- Excellent, G-Good, F-Fair, P-Poor, D-Dead

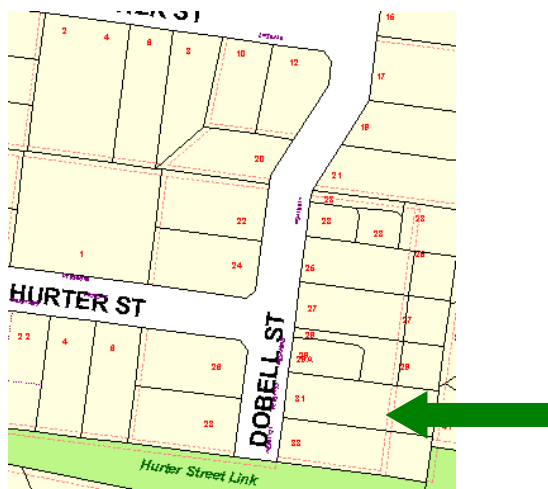
Criteria for Significance (please refer page x):

Historical significance		Rare/Localised distribution		Horticultural/Genetic Value		Particularly old
Curious growth form		Outstanding size		Outstanding Example of the Species		Unique environmental contribution
Unique Location/Context	✓	Aesthetic Value		Aboriginal Culture		

Statement of Significance:

The age and size of this tree provides an important contribution to the immediate landscape.

Map:



Photo(s):



CITY OF WHITEHORSE- STATEMENT OF TREE SIGNIFICANCE

Property Address: 1 Glenice Ave Blackburn Sth
Melways Ref: 61-G4
Survey Dates: 26.4.02 / March – April 2004

Tree No.	1	2	3
Tree Name	Eucalyptus viminalis Manna Gum		
Tree Size	Mature		
Height	20m		
Spread	18m		
Significance*	L		
Age (years)	30-60		
Condition*	G		
Notes	Location- North sideage Glenice Avenue This tree is a good quality specimen.		

* Significance: N-National, S-State, R-Regional, L- Local
 * Condition: E- Excellent, G-Good, F-Fair, P-Poor, D-Dead

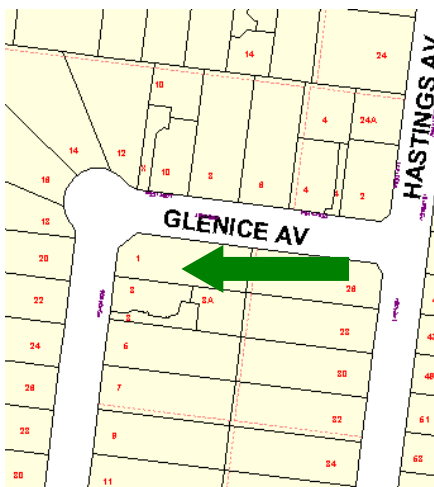
Criteria for Significance (please refer page x):

Historical significance		Rare/Localised distribution		Horticultural/Genetic Value		Particularly old
Curious growth form		Outstanding size		Outstanding Example of the Species		Unique environmental contribution
Unique Location/Context	✓	Aesthetic Value		Aboriginal Culture		

Statement of Significance:

The age and size of this tree provides an important contribution to the immediate landscape.

Map:



Photo(s):



CITY OF WHITEHORSE- STATEMENT OF TREE SIGNIFICANCE

Property Address: 9 Glenice Ave Blackburn Sth
Melways Ref: 61-G4
Survey Dates: 26.4.02 / March – April 2004

Tree No.	1	2	3
Tree Name	Corymbia maculata Spotted Gum	Corymbia maculata Spotted Gum	Corymbia maculata Spotted Gum
Tree Size	Mature	Mature	Mature
Height	18m	16m	20m
Spread	8m	9m	8m
Significance*	L	L	L
Age (years)	30-60	30-60	30-60
Condition*	G	G	G
Notes	Location- Rear north side boundary, NW	Location- Rear north side boundary, central	Location- Rear north side boundary, NE

* Significance: N-National, S-State, R-Regional, L- Local
 * Condition: E- Excellent, G-Good, F-Fair, P-Poor, D-Dead

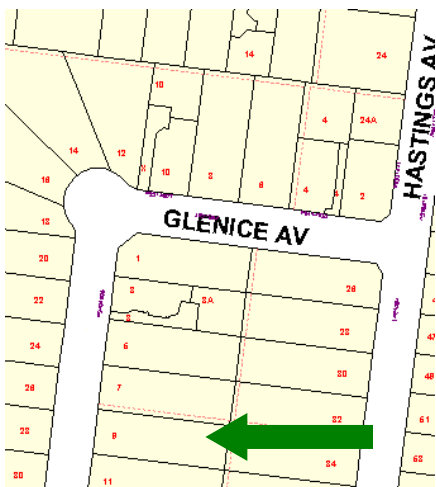
Criteria for Significance (see page 2 for explanation of criteria):

Historical significance		Rare/Localised distribution		Horticultural/Genetic Value	Particularly old
Curious growth form		Outstanding size		Outstanding Example of the Species	Unique environmental contribution
Unique Location/Context	✓	Aesthetic Value		Aboriginal Culture	

Statement of Significance:

The age and size of this tree provides an important contribution to the immediate landscape.

Map:



Photo(s):



CITY OF WHITEHORSE- STATEMENT OF TREE SIGNIFICANCE

Property Address: 31 Grange Rd Blackburn Sth

Melways Ref: 61-J4

Survey Dates: 26.4.02 / March – April 2004

Tree No.	1	2	3
Tree Name	Eucalyptus melliodora Yellow Box		
Tree Size	Mature		
Height	20m		
Spread	10m		
Significance*	L		
Age (years)	30-60		
Condition*	G		
Notes	Location- Rear, east side boundary This tree is a good quality specimen.		

* Significance: N-National, S-State, R-Regional, L- Local

* Condition: E- Excellent, G-Good, F-Fair, P-Poor, D-Dead

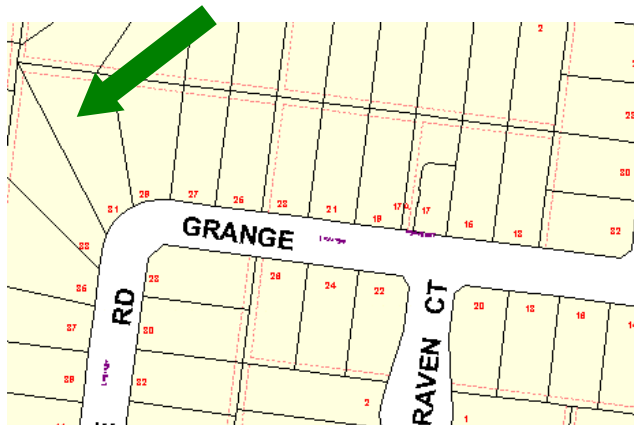
Criteria for Significance (please refer page x):

Historical significance	Rare/Localised distribution	Horticultural/Genetic Value	Particularly old
Curious growth form	Outstanding size	Outstanding Example of the Species	✓ Unique environmental contribution
Unique Location/Context	Aesthetic Value	Aboriginal Culture	

Statement of Significance:

This is an indigenous habitat tree of local provenance, that is part of regional vegetation linkages. It provides a vegetation corridor for local bird life and fauna. It acts as a vegetation source upon which re-vegetation and re-generation of indigenous flora can occur. This tree is integral to the establishment of a sustainable urban and native landscape.

Map:



Photo(s):



CITY OF WHITEHORSE- STATEMENT OF TREE SIGNIFICANCE

Property Address: 10 Mansfield St Blackburn Sth
 Melways Ref: 61-G1
 Survey Dates: March – April 2004

Tree No.	1	2	3
Tree Name	Quercus robur English Oak		
Tree Size	Mature		
Height	18m		
Spread	16m		
Significance*	R		
Age (years)	30-60		
Condition*	G		
Notes	Location- Rear, SW side This tree is a good quality specimen.		

* Significance: N-National, S-State, R-Regional, L- Local
 * Condition: E- Excellent, G-Good, F-Fair, P-Poor, D-Dead

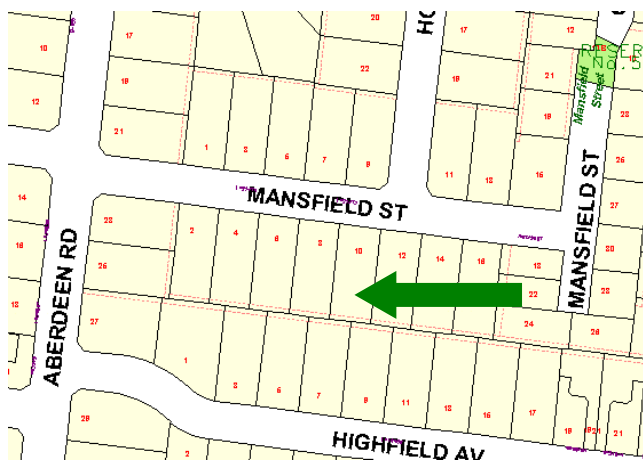
Criteria for Significance (please refer page x):

Historical significance		Rare/Localised distribution		Horticultural/Genetic Value		Particularly old
Curious growth form		Outstanding size		Outstanding Example of the Species		Unique environmental contribution
Unique Location/Context	✓	Aesthetic Value		Aboriginal Culture		

Statement of Significance:

The age and size of this tree provides an important contribution to the immediate landscape.

Map:



Photo(s):



CITY OF WHITEHORSE- STATEMENT OF TREE SIGNIFICANCE

Property Address: 1 Maxwell Ct Blackburn Sth
Melways Ref: 61-H1
Survey Dates: 30.4.01 / March – April 2004

Tree No.	1	2	3
Tree Name	Angophora costata Apple Gum		
Tree Size	Mature		
Height	16m		
Spread	14m		
Significance*	R		
Age (years)	30-60		
Condition*	G		
Notes	Location- Frontage, south This tree is a good quality specimen		

* Significance: N-National, S-State, R-Regional, L- Local
 * Condition: E- Excellent, G-Good, F-Fair, P-Poor, D-Dead

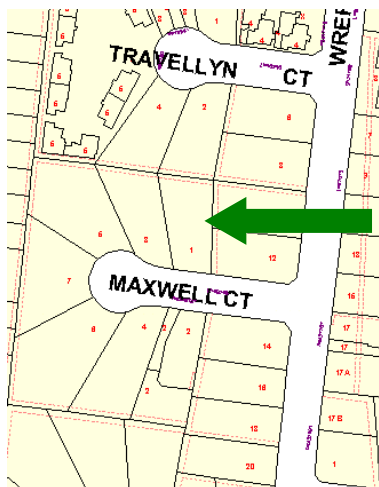
Criteria for Significance (please refer page x):

Historical significance		Rare/Localised distribution		Horticultural/Genetic Value		Particularly old
Curious growth form		Outstanding size		Outstanding Example of the Species		Unique environmental contribution
Unique Location/Context	✓	Aesthetic Value		Aboriginal Culture		

Statement of Significance:

The age and size of this tree provides an important contribution to the immediate landscape.

Map:



Photo(s):



CITY OF WHITEHORSE- STATEMENT OF TREE SIGNIFICANCE

Property Address: 198 Middleborough Rd Blackburn Sth
Melways Ref: 61-F3
Survey Dates: 6.6.02 / March – April 2004

Tree No.	1	2	3
Tree Name	Eucalyptus macrocarpa Mottlecah		
Tree Size	Mature		
Height	16m		
Spread	15m		
Significance*	L		
Age (years)	30-60		
Condition*	G		
Notes	Location- Frontage This tree is a good quality specimen.		

* Significance: N-National, S-State, R-Regional, L- Local
 * Condition: E- Excellent, G-Good, F-Fair, P-Poor, D-Dead

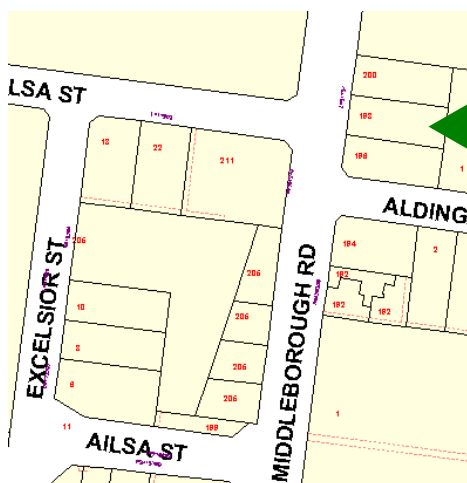
Criteria for Significance (please refer page x):

	Historical significance	Rare/Localised distribution	Horticultural/Genetic Value	Particularly old
	Curious growth form	Outstanding size	Outstanding Example of the Species	Unique environmental contribution
✓	Unique Location/Context	Aesthetic Value	Aboriginal Culture	

Statement of Significance:

This is an indigenous habitat tree of local provenance, that is part of regional vegetation linkages. It provides a vegetation corridor for local bird life and fauna. It acts as a vegetation source upon which re-vegetation and re-generation of indigenous flora can occur. This tree is integral to the establishment of a sustainable urban and native landscape.

Map:



Photo(s):



CITY OF WHITEHORSE- STATEMENT OF TREE SIGNIFICANCE

Property Address: 13 O'Brien Cres Blackburn Sth
Melways Ref: 61-H5
Survey Dates: / March – April 2004

Tree No.	1	2	3
Tree Name	Cupressus torulosa Common Spruce		
Tree Size	Mature		
Height	26m		
Spread	15m		
Significance*	R		
Age (years)	30-60		
Condition*	G		
Notes	Location- Rear This tree is a good quality specimen. Tree girth 4m +		

* Significance: N-National, S-State, R-Regional, L- Local

* Condition: E- Excellent, G-Good, F-Fair, P-Poor, D-Dead

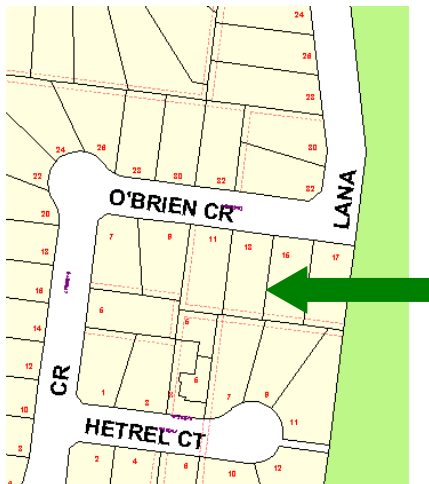
Criteria for Significance (see page 2 for explanation of criteria):

Historical significance		Rare/Localised distribution		Horticultural/Genetic Value		Particularly old
Curious growth form		Outstanding size		Outstanding Example of the Species		Unique environmental contribution
Unique Location/Context	✓	Aesthetic Value		Aboriginal Culture		

Statement of Significance:

The age and size of this tree provides an important contribution to the immediate landscape.

Map:



Photo(s):



CITY OF WHITEHORSE- STATEMENT OF TREE SIGNIFICANCE

Property Address: 4 Pamela Crt Blackburn Sth
Melways Ref: 61-K4
Survey Dates: 10.5.02 / March – April 2004

Tree No.	1	2	3
Tree Name	Eucalyptus mannifera Brittle Gum		
Tree Size	Mature		
Height	16m		
Spread	12m		
Significance*	L		
Age (years)	30-60		
Condition*	G		
Notes	Location- Frontage, central This tree is a good quality specimen		

* Significance: N-National, S-State, R-Regional, L- Local
 * Condition: E- Excellent, G-Good, F-Fair, P-Poor, D-Dead

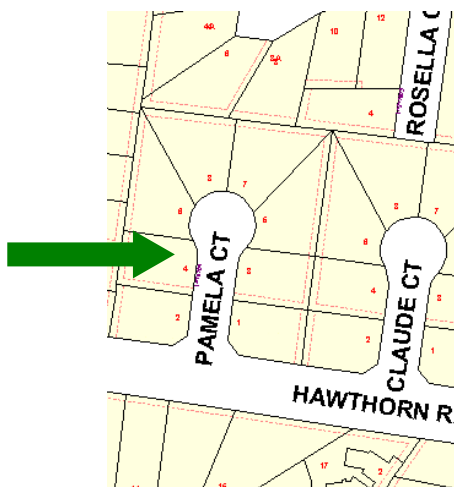
Criteria for Significance (please refer page x):

Historical significance		Rare/Localised distribution		Horticultural/Genetic Value		Particularly old
Curious growth form		Outstanding size		Outstanding Example of the Species		Unique environmental contribution
Unique Location/Context	✓	Aesthetic Value		Aboriginal Culture		

Statement of Significance:

The age and size of this tree provides an important contribution to the immediate landscape.

Map:



Photo(s):



CITY OF WHITEHORSE- STATEMENT OF TREE SIGNIFICANCE

Property Address: 5 Perth St Blackburn Sth
Melways Ref: 61-G4
Survey Dates: 30.4.02 / March – April 2004

Tree No.	1	2	3
Tree Name	Quercus robur English Oak		
Tree Size	Mature		
Height	20m		
Spread	16m		
Significance*	R		
Age (years)	30-60		
Condition*	E		
Notes	Location- Frontage This tree is an excellent quality specimen.		

* Significance: N-National, S-State, R-Regional, L- Local
 * Condition: E- Excellent, G-Good, F-Fair, P-Poor, D-Dead

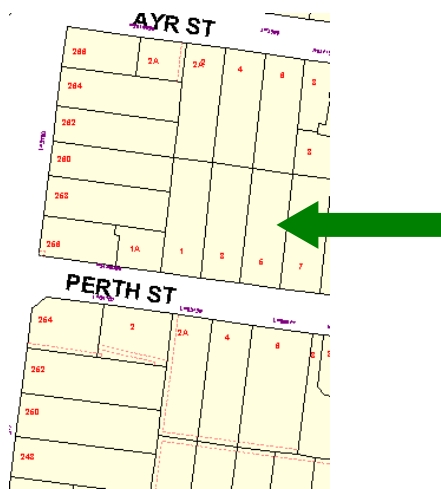
Criteria for Significance (please refer page x):

Historical significance		Rare/Localised distribution		Horticultural/Genetic Value		Particularly old
Curious growth form		Outstanding size		Outstanding Example of the Species		Unique environmental contribution
Unique Location/Context	✓	Aesthetic Value		Aboriginal Culture		

Statement of Significance:

The age and size of this tree provides an important contribution to the immediate landscape.

Map:



Photo(s):



CITY OF WHITEHORSE- STATEMENT OF TREE SIGNIFICANCE

Property Address: 4 Ralph St Blackburn Sth

Melways Ref: 61-K2

Survey Dates: 6.5.02 / March – April 2004

Tree No.	1	2	3
Tree Name	Quercus robur English oak		
Tree Size	Mature		
Height	20m		
Spread	22m		
Significance*	R		
Age (years)	30-60		
Condition*	G		
Notes	Location- Rear, west boundary This tree is a good quality specimen.		

* Significance: N-National, S-State, R-Regional, L- Local

* Condition: E- Excellent, G-Good, F-Fair, P-Poor, D-Dead

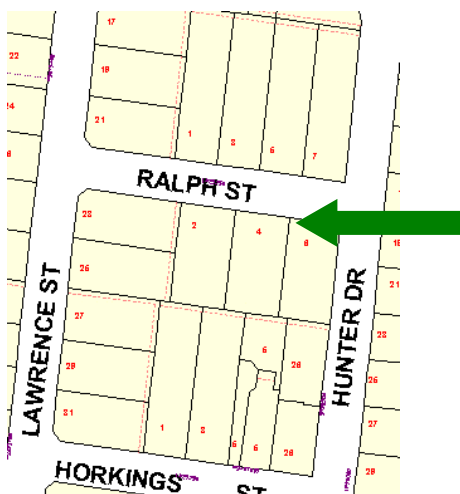
Criteria for Significance (please refer page x):

Historical significance		Rare/Localised distribution		Horticultural/Genetic Value		Particularly old
Curious growth form		Outstanding size		Outstanding Example of the Species		Unique environmental contribution
Unique Location/Context	✓	Aesthetic Value		Aboriginal Culture		

Statement of Significance:

The age and size of this tree provides an important contribution to the immediate landscape.

Map:



Photo(s):



CITY OF WHITEHORSE- STATEMENT OF TREE SIGNIFICANCE

Property Address: 31 Samuel Rd Blackburn Sth
Melways Ref: 61-J5
Survey Dates: 24.6.02 / March – April 2004

Tree No.	1	2	3
Tree Name	Eucalyptus leucoxylon Yellow Gum	Eucalyptus leucoxylon Yellow Gum	
Tree Size	Mature	Mature	
Height	16m	12m	
Spread	18m	18m	
Significance*	L	L	
Age (years)	60-100	60-100	
Condition*	G	G	
Notes	Location- Frontage This tree is a good quality specimen	Location- Frontage This tree is a good quality specimen	

* Significance: N-National, S-State, R-Regional, L- Local
 * Condition: E- Excellent, G-Good, F-Fair, P-Poor, D-Dead

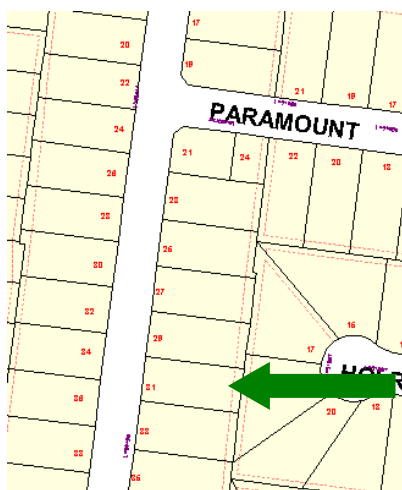
Criteria for Significance (see page 2 for explanation of criteria):

	Historical significance	Rare/Localised distribution	Horticultural/Genetic Value	Particularly old
	Curious growth form	Outstanding size	Outstanding Example of the Species	Unique environmental contribution
✓	Unique Location/Context	Aesthetic Value	Aboriginal Culture	

Statement of Significance:

These are indigenous habitat trees of local provenance, that are part of regional vegetation linkages. They provide a vegetation corridor for local bird life and fauna. They act as a vegetation source upon which re-vegetation and re-generation of indigenous flora can occur. This tree is integral to the establishment of a sustainable urban and native landscape.

Map:



Photo(s):



Tree 1



Tree 2

CITY OF WHITEHORSE- STATEMENT OF TREE SIGNIFICANCE

Property Address: 40 Samuel Rd Blackburn Sth

Melways Ref: 61-J5

Survey Dates: 30.4.02 / March – April 2004

Tree No.	1	2	3
Tree Name	Angophora costata Sydney Red Gum		
Tree Size	Mature		
Height	16m		
Spread	14m		
Significance*	R		
Age (years)	30-60		
Condition*	G		
Notes	Location- Frontage This tree is a good quality specimen		

* Significance: N-National, S-State, R-Regional, L- Local

* Condition: E- Excellent, G-Good, F-Fair, P-Poor, D-Dead

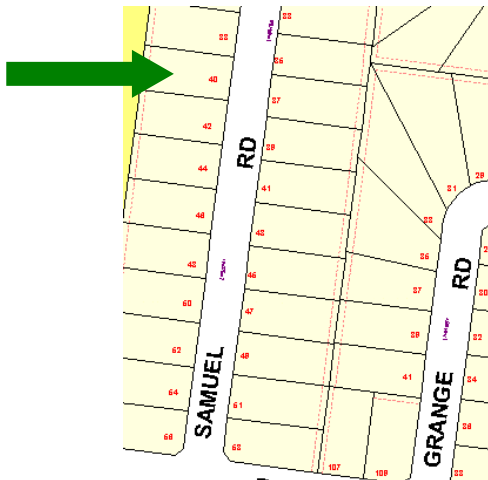
Criteria for Significance (please refer page x):

Historical significance		Rare/Localised distribution		Horticultural/Genetic Value		Particularly old
Curious growth form		Outstanding size		Outstanding Example of the Species		Unique environmental contribution
Unique Location/Context	✓	Aesthetic Value		Aboriginal Culture		

Statement of Significance:

The age and size of this tree provides an important contribution to the immediate landscape.

Map:



Photo(s):



CITY OF WHITEHORSE- STATEMENT OF TREE SIGNIFICANCE

Property Address: 42 Samuel Rd Blackburn Sth

Melways Ref: 61-J5

Survey Dates: 30.4.02 / March – April 2004

Tree No.	1	2	3
Tree Name	Eucalyptus citriodora Lemon Scented Gum		
Tree Size	Mature		
Height	20m		
Spread	16m		
Significance*	L		
Age (years)	30-60		
Condition*	G		
Notes	This tree is a good quality specimen.		

* Significance: N-National, S-State, R-Regional, L- Local

* Condition: E- Excellent, G-Good, F-Fair, P-Poor, D-Dead

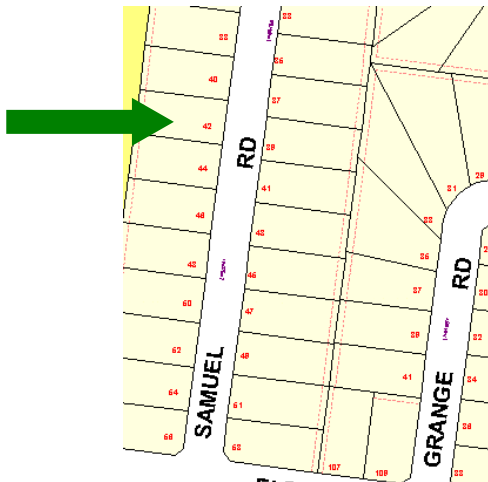
Criteria for Significance (please refer page x):

Historical significance		Rare/Localised distribution		Horticultural/Genetic Value		Particularly old
Curious growth form		Outstanding size		Outstanding Example of the Species		Unique environmental contribution
Unique Location/Context	✓	Aesthetic Value		Aboriginal Culture		

Statement of Significance:

The age and size of this tree provides an important contribution to the immediate landscape.

Map:



Photo(s):



CITY OF WHITEHORSE- STATEMENT OF TREE SIGNIFICANCE

Property Address: 16 Shaun Ave Blackburn Sth

Melways Ref: 61-K5

Survey Dates: 16.5.02 / March – April 2004

Tree No.	1	2	3
Tree Name	Corymbia maculata Spotted Gum		
Tree Size	Mature		
Height	16-18m		
Spread	12m		
Significance*	L		
Age (years)	30-60		
Condition*	G		
Notes	Location- Frontage, NE corner This tree is a good quality specimen. Recommend branch stubs from past lopping on south side are removed.		

* Significance: N-National, S-State, R-Regional, L- Local

* Condition: E- Excellent, G-Good, F-Fair, P-Poor, D-Dead

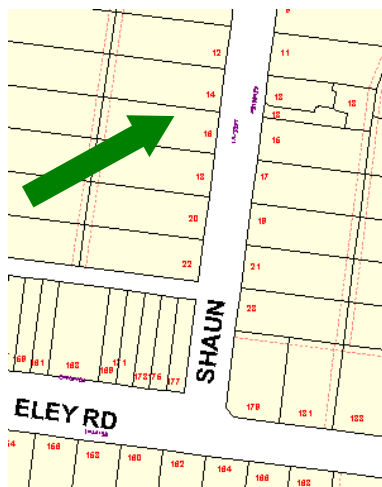
Criteria for Significance (please refer page x):

Historical significance		Rare/Localised distribution		Horticultural/Genetic Value		Particularly old
Curious growth form		Outstanding size		Outstanding Example of the Species		Unique environmental contribution
Unique Location/Context	✓	Aesthetic Value		Aboriginal Culture		

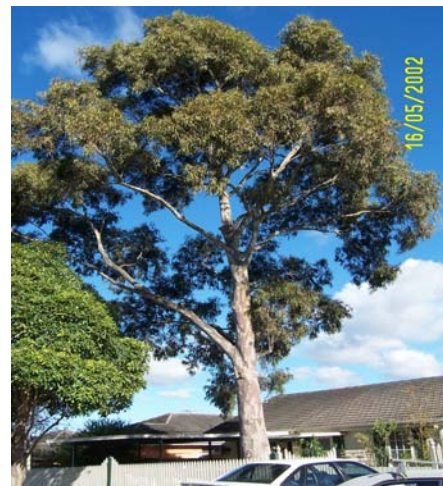
Statement of Significance:

The age and size of this tree provides an important contribution to the immediate landscape.

Map:



Photo(s):



CITY OF WHITEHORSE- STATEMENT OF TREE SIGNIFICANCE

Property Address: 18 Somerset Crt Blackburn Sth

Melways Ref: 61-J4

Survey Dates: 15.5.02 / March – April 2004

Tree No.	1	2	3
Tree Name	Eucalyptus mannifera Brittle Gum		
Tree Size	Mature		
Height	16m		
Spread	14m		
Significance*	L		
Age (years)	30-60		
Condition*	G		
Notes	Location- Frontage This tree is a good quality specimen		

* Significance: N-National, S-State, R-Regional, L- Local

* Condition: E- Excellent, G-Good, F-Fair, P-Poor, D-Dead

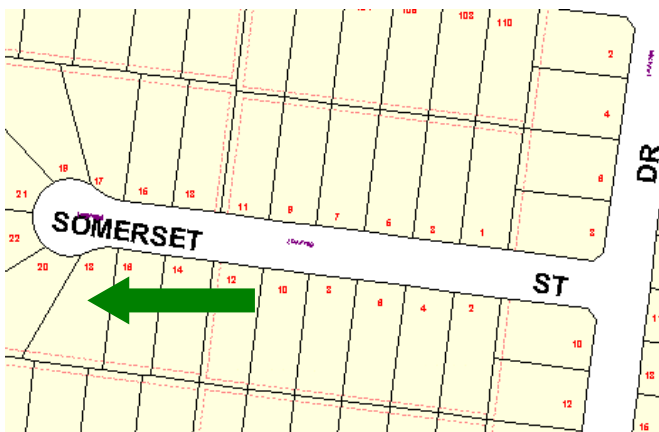
Criteria for Significance (please refer page x):

Historical significance		Rare/Localised distribution		Horticultural/Genetic Value		Particularly old
Curious growth form		Outstanding size		Outstanding Example of the Species		Unique environmental contribution
Unique Location/Context	✓	Aesthetic Value		Aboriginal Culture		

Statement of Significance:

The age and size of this tree provides an important contribution to the immediate landscape.

Map:



Photo(s):

