

Proposed Massing Elevations/Sections

NOTES:
 Do not scale - use dimensions only
 This drawing is to be read in conjunction with all others
 Unless otherwise stated all dimensions are in millimeters
 These drawings are subjected to copyright
 Volumetric massing subject to change
 Number of attendees - currently the Auditorium has weekend attendance total 3,500 - 4,000. The masterplan will cater for up to 10,000 a weekend when complete
 Floor area increase in line with attendance, approx 2.5 times current floor area
 The content and order of building phases is indicative only

REVISIONS:
 Labelling of phasing and outline of what is involved with each phase has been clarified

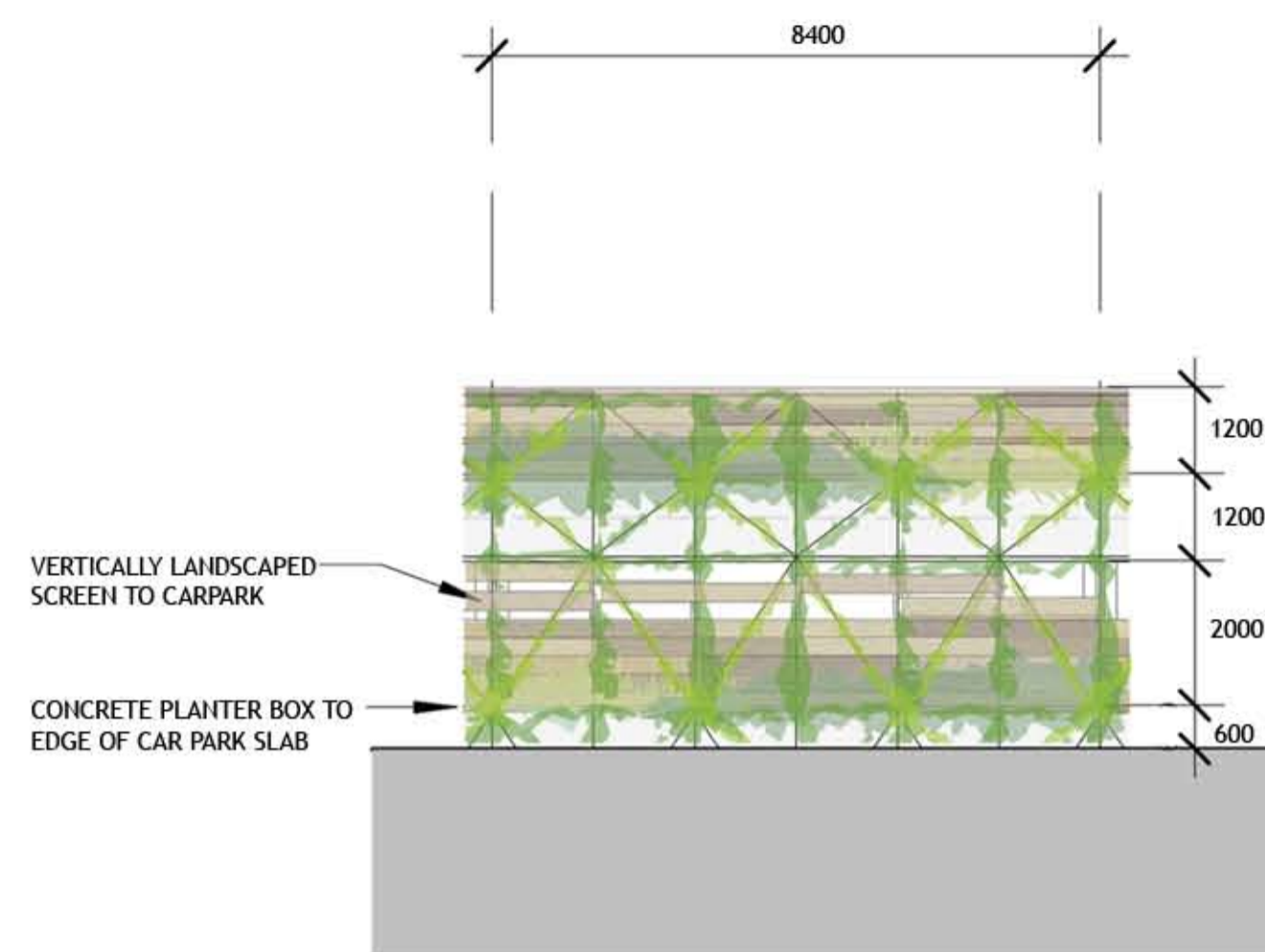
- PHASING LEGEND:**
- Phase Life Care :
 Life Care Building including lower car parking
 Modification to Children's Centre (Admin Office)
 - Phase Large Auditorium:
 Main auditorium
 New entry and circulation
 Kitchen
 Main Hub Cafe
 Children's centre reception
 Cry room auditorium
 Media Room
 Service rooms & workshops
 Springvale Road Landscaping
 Overflow carpark
 5m Planted setback zone
 Retarding Basin Landscaping
 North Multi-Level Carpark - May be constructed in 2 stages depending on demand
 a. Ground + 2 stories
 b. Top stories up to 5 levels
 Vegetation along southern boundary of Multi-Level carpark
 - Phase Beacon:
 Offices
 Auditoria
 Small meeting rooms
 Enlarged foyer for existing auditorium
 Vision Drive Landscaping
 New northern entry
 - Phase including existing building:
 2 new smaller auditoria for ethnic groups
 Children's centre
 Western Fellowship

- Bi-Level Carpark
 8m vegetation buffer to western boundary of Bi-Level carpark

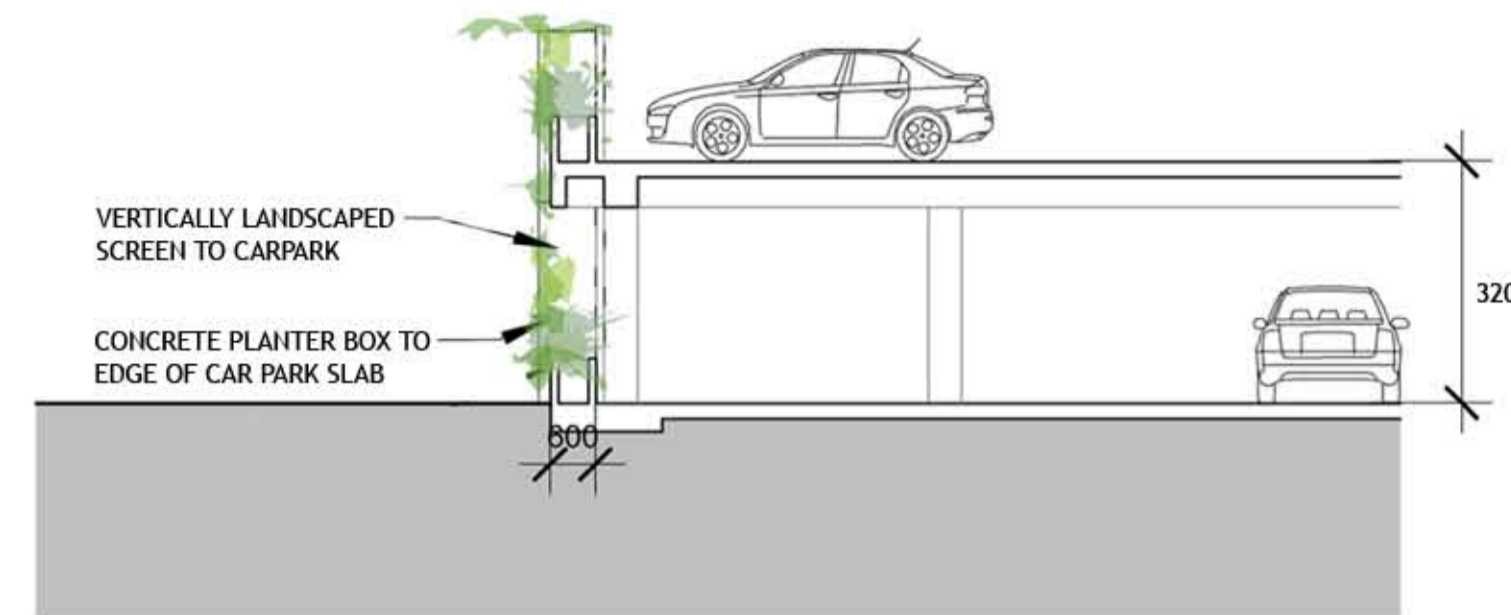


Studio B Architects
 23 Farwick Street, Clifton Hill, Vic 3068
 www.studiob.net.au
 T: +61 3 9486 4426 F: +61 3 9486 4436

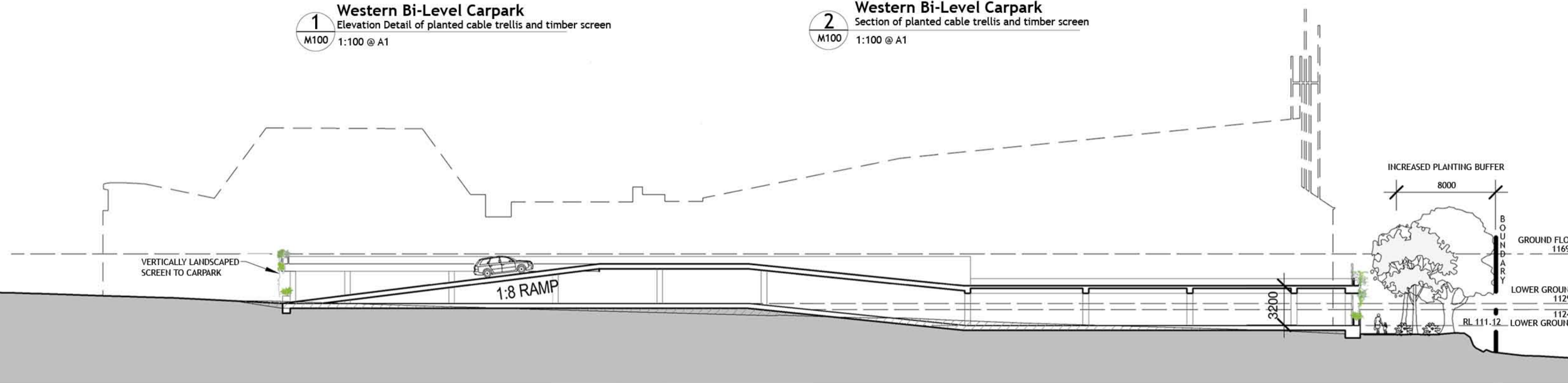
Scenic Spectrums Pty Ltd
 Geo- Environmental Planning Design Visual Tourism Research Development



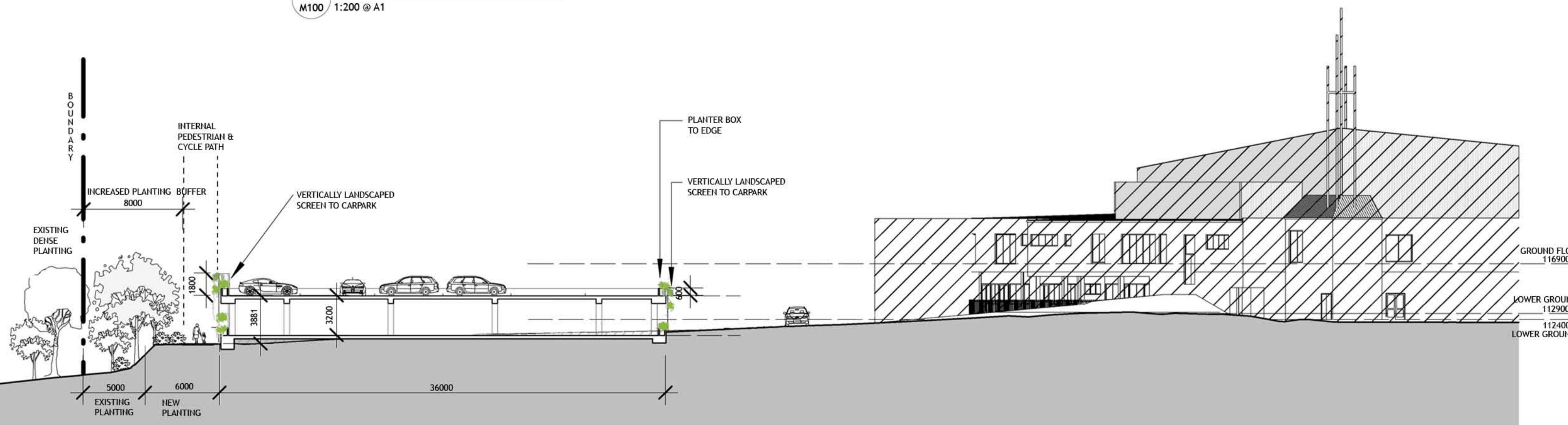
1 Western Bi-Level Carpark
 Elevation Detail of planted cable trellis and timber screen
 M100 1:100 @ A1



2 Western Bi-Level Carpark
 Section of planted cable trellis and timber screen
 M100 1:100 @ A1



3 Western Bi-Level Carpark
 Section A
 M100 1:200 @ A1



4 Western Bi-Level Carpark
 Section B
 M100 1:200 @ A1

Scale	Drawn By
AS INDICATED @ A1	AW
Drawing Date	File Name
August 2011	230_Planning Application... OPD Application_OPD Update 110728_M310a.pdf
Project No.	Drawing No.
220	M310a