

21.04

xx/xx/xxxx
Cxx

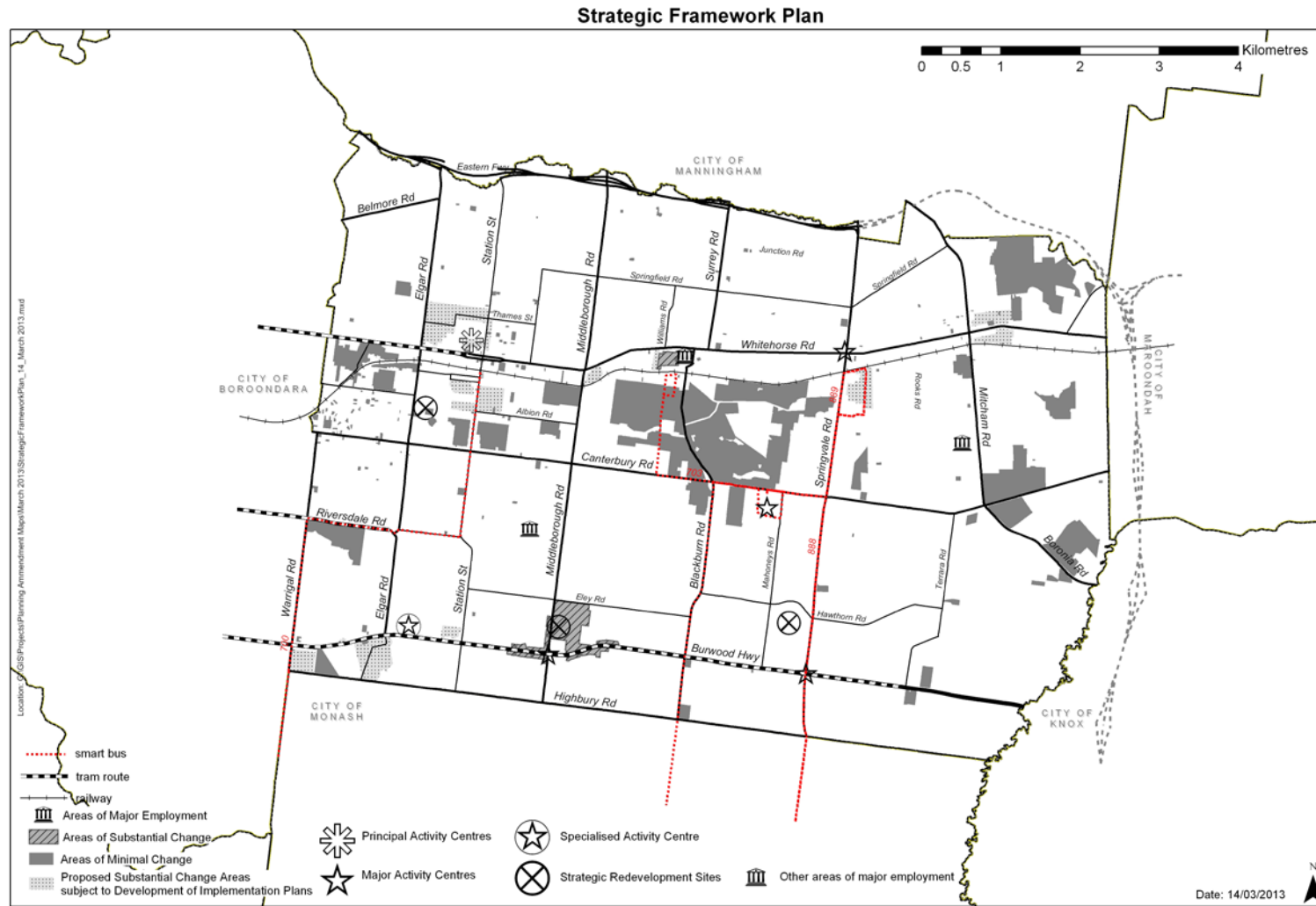
STRATEGIC DIRECTIONS

A series of objectives, strategies and implementation mechanisms reinforce the City of Whitehorse's vision statement. They are grouped under the headings identified as the key land use issues at Clause 21.02 Key issues, being:

- Environment
- Housing
- Economic Development
- Infrastructure

In addition, an overall Strategic Framework Plan is presented which provides a visual demonstration of how the land use strategies are to be implemented. Specific land uses and development opportunities will be directed to the appropriate locations and key sites as shown on the Plan. In addition, areas of significance and environmental constraints on future development are identified.

WHITEHORSE PLANNING SCHEME



Comment [TN1]: Council will need to update the change areas in this map