



## Significant Tree Statements

### **Box Hill**

## CITY OF WHITEHORSE- STATEMENT OF TREE SIGNIFICANCE

**Property Address: 32 Albion Road, Box Hill**

Melways Ref: 47 D11

Surveyed: 5<sup>th</sup> July 2006 (AJ)

Tree No.	1	2	3
Tree Name	<i>Eucalyptus rubida</i> Candlebark	<i>Eucalyptus rubida</i> Candlebark	
DBH	64 cm	63 cm	
Height	16 metres	19 metres	
Spread	13 metres	12 metres	
Significance*	L	L	
Age (years)	Mature	Mature	
Condition*	G	G	
Assets within 4 metres	None	Path	
SULE	20-50 years	20-50 years	
Notes	East tree	West tree	

\* Significance: N-National, S-State, R-Regional, L- Local

\* Condition: E- Excellent, G-Good, F-Fair, P-Poor, D-Dead

### Criteria for Significance:

	Historical significance		Rare/Localised distribution		Horticultural/Genetic Value		Particularly old
	Curious growth form		Outstanding size		Outstanding Example of the Species		Unique environmental contribution
	Unique Location/Context	*	Aesthetic Value		Aboriginal Culture		Good example of indigenous species

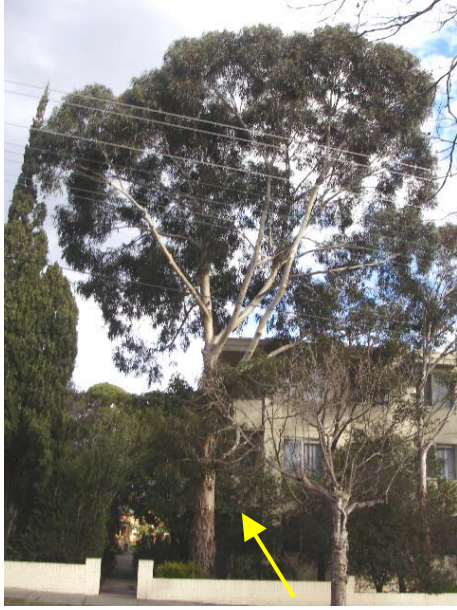
### Statement of Significance:

These two trees are located at the front of the property in common land. They are of good health and structure and have been maintained to ensure clearance from the buildings. They have adequate room to continue to grow in this area and contribute to the amenity of the wider landscape. They are suitable for inclusion within the Significant Tree Register.

### Map:



**Photo(s):**



**Tree #1**



**Tree #2**

## CITY OF WHITEHORSE- STATEMENT OF TREE SIGNIFICANCE

**Property Address: 22 Alexander Street, Box Hill**

Melways Ref: 47 C11

Surveyed: 5<sup>th</sup> July 2006 (AJ)

Tree No.	1	2	3
Tree Name	<i>Eucalyptus melliodora</i> Yellow Box		
DBH	77cm		
Height	22 metres		
Spread	16 metres		
Significance*	L		
Age (years)	Mature		
Condition*	G		
Assets within 4 metres	Patio		
SULE	20-50 years		
Notes			

\* Significance: N-National, S-State, R-Regional, L- Local

\* Condition: E- Excellent, G-Good, F-Fair, P-Poor, D-Dead

### Criteria for Significance:

	Historical significance		Rare/Localised distribution		Horticultural/Genetic Value		Particularly old
	Curious growth form	*	Outstanding size		Outstanding Example of the Species		Unique environmental contribution
	Unique Location/Context	*	Aesthetic Value		Aboriginal Culture	*	Good example of indigenous species

### Statement of Significance:

This tree is located in the rear yard of the property. It is of good health and structure and is being properly managed through pruning by the owners. It is one of the few large remnant trees remaining in the immediate area and is worthy of inclusion within the Significant Tree Register.

### Map:



### Photo(s):



**The Yellow Box**

## CITY OF WHITEHORSE- STATEMENT OF TREE SIGNIFICANCE

**Property Address: 11 Bedford Street, Box Hill**

Melways Ref: 47 F12

Surveyed: 5<sup>th</sup> September 2006 (AJ)

Tree No.	1	2	3
Tree Name	<i>Eucalyptus melliodora</i> Yellow Box		
DBH	66 cm		
Height	20 metres		
Spread	13 metres		
Significance*	L		
Age (years)	Mature		
Condition*	G		
Assets within 4 metres	None		
SULE	20-50 years		
Notes			

\* Significance: N-National, S-State, R-Regional, L- Local

\* Condition: E- Excellent, G-Good, F-Fair, P-Poor, D-Dead

### Criteria for Significance:

	Historical significance		Rare/Localised distribution		Horticultural/Genetic Value		Particularly old
	Curious growth form	*	Outstanding size		Outstanding Example of the Species		Unique environmental contribution
	Unique Location/Context	*	Aesthetic Value		Aboriginal Culture	*	Good example of indigenous species

### Statement of Significance:

Tree #1 is of good health and structure. It has a single upright stem and is well located. It is suitable for inclusion within the Significant Tree Register.

### Site map:



### Photo(s):



**Tree #1**



## CITY OF WHITEHORSE- STATEMENT OF TREE SIGNIFICANCE

**Property Address: 13 Bedford Street, Box Hill**

Melways Ref: 47 E12

Surveyed: 5<sup>th</sup> July 2006 (AJ)

Tree No.	1	2	3
Tree Name	<i>Eucalyptus melliodora</i> Yellow Box		
DBH	125 cm		
Height	22 metres		
Spread	25 metres		
Significance*	L		
Age (years)	Mature		
Condition*	Fair to good		
Assets within 4 metres	Shed		
SULE	20-50 years		
Notes			

\* Significance: N-National, S-State, R-Regional, L- Local

\* Condition: E- Excellent, G-Good, F-Fair, P-Poor, D-Dead

### Criteria for Significance:

	Historical significance		Rare/Localised distribution		Horticultural/Genetic Value		Particularly old
	Curious growth form	*	Outstanding size		Outstanding Example of the Species		Unique environmental contribution
	Unique Location/Context	*	Aesthetic Value		Aboriginal Culture	*	Good example of indigenous species

### Statement of Significance:

This tree is located at the rear of the property. It has a very large trunk diameter and canopy spread. It is visible from Bedford Street and surrounding properties and contributes to the overall amenity and canopy cover of the area. This is a very good example of its species. It lost a large limb in March although there was decay at the point of failure. The remainder of the tree is of fairly good health and as the owners are managing it, it is suitable for inclusion within the Register.

### Map:



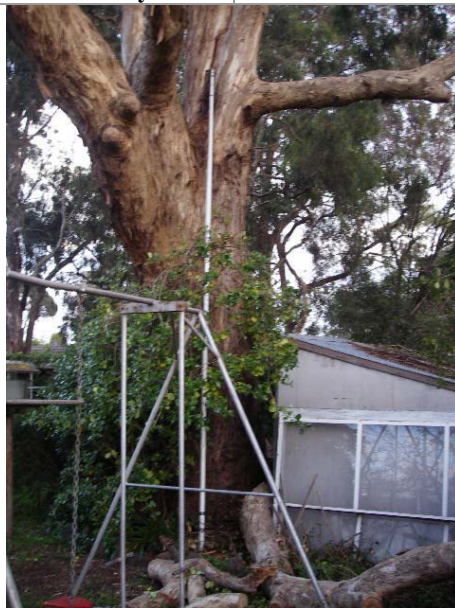
**Photo(s):**



**The Yellow Box (photo taken from driveway)**



**The main structure of the Yellow Box**



**Base of Yellow box and failed limb**

## CITY OF WHITEHORSE- STATEMENT OF TREE SIGNIFICANCE

**Property Address: 16 Bedford Street, Box Hill**

Melways Ref: 47 F12

Surveyed: 5<sup>th</sup> July 2006 (AJ)

Tree No.	1	2	3
Tree Name	<i>Eucalyptus cephalocarpa</i> Silver Stringybark		
DBH	90 cm		
Height	15 metres		
Spread	12 metres		
Significance*	L		
Age (years)	Mature		
Condition*	Fair to good		
Assets within 4 metres	Driveway		
SULE	20-50 years		
Notes			

\* Significance: N-National, S-State, R-Regional, L- Local

\* Condition: E- Excellent, G-Good, F-Fair, P-Poor, D-Dead

### Criteria for Significance:

	Historical significance		Rare/Localised distribution		Horticultural/Genetic Value	*	Particularly old
	Curious growth form		Outstanding size		Outstanding Example of the Species		Unique environmental contribution
	Unique Location/Context	*	Aesthetic Value		Aboriginal Culture		Good example of indigenous species

### Statement of Significance:

This tree is located in common land at the corner of the property. It is an old, remnant tree that has some decay in the main stem and scaffolds. It is located in an open area and although it does have some defects it does not pose a high hazard due to its location. This tree is suitable for inclusion within the Register due to its location, remnant nature and contribution to the wider landscape.

### Map:



### Photo(s):



**The Silver Stringybark**



## CITY OF WHITEHORSE- STATEMENT OF TREE SIGNIFICANCE

**Property Address: 35 Bedford Street, Box Hill**

Melways Ref: 47 F11

Surveyed: 5<sup>th</sup> July 2006 (AJ)

Tree No.	1	2	3
Tree Name	<i>Eucalyptus saligna</i> Sydney Blue Gum		
DBH	125 cm		
Height	24 metres		
Spread	19 metres		
Significance*	L		
Age (years)	Mature		
Condition*	Good		
Assets within 4 metres	None		
SULE	20-50 years		
Notes			

\* Significance: N-National, S-State, R-Regional, L- Local

\* Condition: E- Excellent, G-Good, F-Fair, P-Poor, D-Dead

### Criteria for Significance:

	Historical significance		Rare/Localised distribution		Horticultural/Genetic Value		Particularly old
	Curious growth form	*	Outstanding size	*	Outstanding Example of the Species		Unique environmental contribution
	Unique Location/Context	*	Aesthetic Value		Aboriginal Culture		Good example of indigenous species

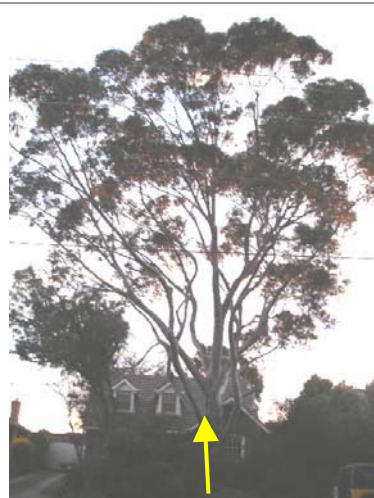
### Statement of Significance:

This tree is located at the front of the property. It is of good health and structure and is regularly pruned and maintained. It contributes to the streetscape and amenity of the area. There was evidence of some decay in at least one of the main scaffolds but as this tree is regularly pruned and monitored by an arborist the risk is greatly reduced. This tree is worthy of inclusion due to its size and location.

### Map:



### Photo(s):



**The Sydney Blue Gum**

## CITY OF WHITEHORSE- STATEMENT OF TREE SIGNIFICANCE

**Property Address: 8 Clota Avenue, Box Hill**

Melways Ref: 47 F9

Surveyed: July 2006 (DG)

Tree No.	1	2	3
Tree Name	<i>Eucalyptus camaldulensis</i> River Red Gum		
DBH	115 cm		
Height	25 m		
Spread	16 m		
Significance*	R		
Age (years)	Mature		
Condition*	Good		
Assets within 4 metres	Neighbouring unit ~4m away.		
SULE	>50 years		
Notes	Outstanding tree		

\* Significance: N-National, S-State, R-Regional, L- Local

\* Condition: E- Excellent, G-Good, F-Fair, P-Poor, D-Dead

### Criteria for Significance:

	Historical significance		Rare/Localised distribution		Horticultural/Genetic Value	*	Particularly old
	Curious growth form	*	Outstanding size	*	Outstanding Example of the Species		Unique environmental contribution
	Unique Location/Context	*	Aesthetic Value		Aboriginal Culture	*	Good example of indigenous species

### Statement of Significance:

This very large River Red Gum has several criteria for significance: its size (height and stem diameter) and age, its contribution to the landscape, and as an outstanding example of a locally indigenous species. It can be seen from afar. It is in good condition and has a long life expectancy.

### Map:



### Photo(s):



# CITY OF WHITEHORSE- STATEMENT OF TREE SIGNIFICANCE

**Property Address:** 12 Graham Place, Box Hill

Melways Ref: 47 E9

Surveyed: N/A

Tree No.	1	2	3
Tree Name	<i>Corymbia maculata</i>	<i>Corymbia maculata</i>	
DBH			
Height	16m	18m	
Spread	10m	11m	
Significance*	L	L	
Age (years)	F	F	
Condition*			
Assets within 4 metres			
SULE			
Notes			

\* Significance: N-National, S-State, R-Regional, L- Local

\* Condition: E- Excellent, G-Good, F-Fair, P-Poor, D-Dead

## Criteria for Significance:

Historical significance		Rare/Localised distribution		Horticultural/Genetic Value		Particularly old
Curious growth form	*	Outstanding size		Outstanding Example of the Species		Unique environmental contribution
Unique Location/Context	*	Aesthetic Value		Aboriginal Culture		Good example of indigenous species

## Statement of Significance:

The trees are large Eucalypts that dominate the rear yard of the property and are visible from surrounding streets, contributing to the overall landscape and amenity of the area.

## Map:



## Photo(s):

## CITY OF WHITEHORSE- STATEMENT OF TREE SIGNIFICANCE

**Property Address:** 36 Graham Place, Box Hill

**Melways Ref:** 47 E8

**Surveyed:** N/A

Tree No.	1	2	3
Tree Name	Exotic Tree		
DBH			
Height	16m		
Spread	18m		
Significance*	L		
Age (years)			
Condition*			
Assets within 4 metres			
SULE			
Notes			

\* Significance: N-National, S-State, R-Regional, L- Local

\* Condition: E- Excellent, G-Good, F-Fair, P-Poor, D-Dead

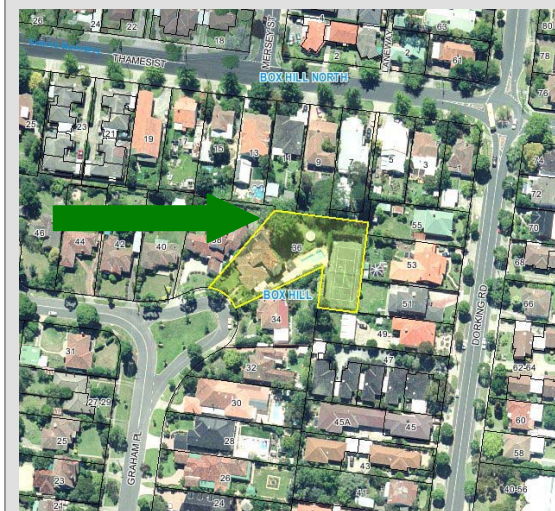
### Criteria for Significance:

Historical significance		Rare/Localised distribution		Horticultural/Genetic Value		Particularly old
Curious growth form	*	Outstanding size		Outstanding Example of the Species		Unique environmental contribution
Unique Location/Context	*	Aesthetic Value		Aboriginal Culture		Good example of indigenous species

### Statement of Significance:

This tree is a large species that dominates the rear yard of the property and is visible from adjoining streets, contributing to the overall landscape and amenity of the area.

### Map:



### Photo(s):



## CITY OF WHITEHORSE- STATEMENT OF TREE SIGNIFICANCE

**Property Address: 8-10 Howard Street, Box Hill**

Melways Ref: 47 C10

Surveyed: 5<sup>th</sup> July 2006 (AJ)

Tree No.	1	2	3
Tree Name	<i>Eucalyptus saligna</i> Sydney Blue Gum		
DBH	68 cm		
Height	19 metres		
Spread	16 metres		
Significance*	L		
Age (years)	Mature		
Condition*	G		
Assets within 4 metres	Apartment block at ~4 metres		
SULE	20-50 years		
Notes			

\* Significance: N-National, S-State, R-Regional, L- Local

\* Condition: E- Excellent, G-Good, F-Fair, P-Poor, D-Dead

### Criteria for Significance:

	Historical significance		Rare/Localised distribution		Horticultural/Genetic Value		Particularly old
	Curious growth form	*	Outstanding size		Outstanding Example of the Species		Unique environmental contribution
	Unique Location/Context	*	Aesthetic Value		Aboriginal Culture		Good example of indigenous species

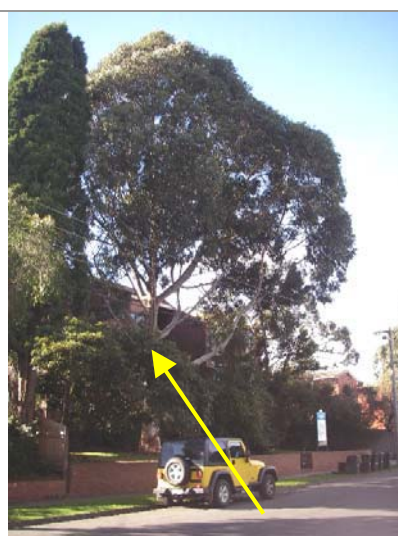
### Statement of Significance:

This tree is one of the larger trees within this immediate area. It is located at the front of the apartments in common land. It is growing within four metres of the building however it has been pruned to ensure that there is clearance of the canopy from the roofline and there did not appear to be any cracking in the brickwork. It is of good health and structure. This tree should be included within the Register due to its size and direct contribution to the streetscape in Howard Street.

### Map:



### Photo(s):



**The Sydney Blue Gum**

## CITY OF WHITEHORSE- STATEMENT OF TREE SIGNIFICANCE

**Property Address: 15 Howard Street, Box Hill**

Melways Ref: 47 C10

Surveyed: 5<sup>th</sup> July 2006 (AJ)

Tree No.	1	2	3
Tree Name	<i>Ulmus glabra</i> 'Camperdownii' Weeping Elm		
DBH	43 cm		
Height	4 metres		
Spread	7 metres		
Significance*	L		
Age (years)	Mature		
Condition*	G		
Assets within 4 metres	Driveway		
SULE	20-50 years		
Notes			

\* Significance: N-National, S-State, R-Regional, L- Local

\* Condition: E- Excellent, G-Good, F-Fair, P-Poor, D-Dead

### Criteria for Significance:

	Historical significance		Rare/Localised distribution		Horticultural/Genetic Value		Particularly old
	Curious growth form	*	Outstanding size		Outstanding Example of the Species		Unique environmental contribution
	Unique Location/Context	*	Aesthetic Value		Aboriginal Culture		Good example of indigenous species

### Statement of Significance:

This tree is located in the front of the property. It is of good health and structure and has a very wide spread for its height. It is suitable for inclusion due to its size and species. It contributes to the streetscape of Howard Street.

### Map:



### Photo(s):



**The Weeping Elm**

## CITY OF WHITEHORSE- STATEMENT OF TREE SIGNIFICANCE

**Property Address: 29 & 31 Rose Street, Box Hill**

Melways Ref: 47 E10

Surveyed: 27<sup>th</sup> July 2006 (AJ)

Tree No.	1	2	3
Tree Name	<i>Quercus robur</i> English Oak		
DBH	90 cm		
Height	15 metres		
Spread	19 metres		
Significance*	L		
Age (years)	Mature		
Condition*	G		
Assets within 4 metres	None		
SULE	20-50 years		
Notes	On common boundary		

\* Significance: N-National, S-State, R-Regional, L- Local

\* Condition: E- Excellent, G-Good, F-Fair, P-Poor, D-Dead

### Criteria for Significance:

	Historical significance		Rare/Localised distribution		Horticultural/Genetic Value		Particularly old
	Curious growth form	*	Outstanding size		Outstanding Example of the Species		Unique environmental contribution
	Unique Location/Context	*	Aesthetic Value		Aboriginal Culture		Good example of indigenous species

### Statement of Significance:

Tree #1, the English Oak is located on the common boundary between 29 & 31 Rose Street. It is a large tree, with a very wide canopy spread. It contributes to the amenity of the wider landscape and is suitable for inclusion within the Significant Tree Register.

### Site map:



### Photo(s):



**The English Oak**



## CITY OF WHITEHORSE- STATEMENT OF TREE SIGNIFICANCE

**Property Address: 37 Rose Street, Box Hill**

Melways Ref: 47 E10

Surveyed: 5<sup>th</sup> September 2006 (AJ)

Tree No.	1	2	3
Tree Name	<i>Eucalyptus melliodora</i> Yellow Box	<i>Eucalyptus melliodora</i> Yellow Box	
DBH	67 cm	53 cm	
Height	18 metres	16 metres	
Spread	17 metres	12 metres	
Significance*	L	L	
Age (years)	Mature	Mature	
Condition*	G	G	
Assets within 4 metres	None	None	
SULE	20-50 years	20-50 years	
Notes	South tree	North tree	

\* Significance: N-National, S-State, R-Regional, L- Local

\* Condition: E- Excellent, G-Good, F-Fair, P-Poor, D-Dead

### Criteria for Significance:

	Historical significance		Rare/Localised distribution		Horticultural/Genetic Value		Particularly old
	Curious growth form		Outstanding size		Outstanding Example of the Species		Unique environmental contribution
	Unique Location/Context	*	Aesthetic Value		Aboriginal Culture	*	Good example of indigenous species

### Statement of Significance:

These two trees are located in the rear of the property. They are of good health and structure and contribute directly to the amenity of the wider landscape in this area. They are two of the largest trees in the area and are also of habitat value. They are suitable for inclusion within the Significant Tree Register.

### Site map:



### Photo(s):



**The Yellow Boxes**



## CITY OF WHITEHORSE- STATEMENT OF TREE SIGNIFICANCE

**Property Address: Unit 3 – 51 Watts Street, Box Hill**

Melways Ref: 47 D8

Surveyed: 5<sup>th</sup> September 2006 (AJ)

Tree No.	1	2	3
Tree Name	<i>Quercus cerris</i> Turkey Oak		
DBH	60 cm		
Height	14 metres		
Spread	10 metres		
Significance*	L		
Age (years)	Mature		
Condition*	G		
Assets within 4 metres	Driveway and laneway		
SULE	20-50 years		
Notes			

\* Significance: N-National, S-State, R-Regional, L- Local

\* Condition: E- Excellent, G-Good, F-Fair, P-Poor, D-Dead

### Criteria for Significance:

	Historical significance		Rare/Localised distribution		Horticultural/Genetic Value		Particularly old
	Curious growth form		Outstanding size		Outstanding Example of the Species		Unique environmental contribution
	Unique Location/Context	*	Aesthetic Value		Aboriginal Culture		Good example of indigenous species

### Statement of Significance:

This tree is located out the front of Unit 3. It is of good health and structure and although not that large in size it contributes to the amenity of the streetscape in Thames Street and Watts Street. It is suitable for inclusion within the Significant Tree Register.

### Site map:



### Photo(s):



**The Turkey Oak**

## CITY OF WHITEHORSE- STATEMENT OF TREE SIGNIFICANCE

**Property Address: 24-26 Wellington Street, Box Hill**

Melways Ref: 47 C8

Surveyed: 6<sup>th</sup> July 2006 (AJ)

Tree No.	1	2	3
Tree Name	<i>Eucalyptus sideroxylon</i> Red Iron Bark		
DBH	72 cm		
Height	16 metres		
Spread	18 metres		
Significance*	L		
Age (years)	40 years		
Condition*	G		
Assets within 4 metres	Driveway		
SULE	20-50 years		
Notes			

\* Significance: N-National, S-State, R-Regional, L- Local

\* Condition: E- Excellent, G-Good, F-Fair, P-Poor, D-Dead

### Criteria for Significance:

	Historical significance		Rare/Localised distribution		Horticultural/Genetic Value		Particularly old
	Curious growth form		Outstanding size		Outstanding Example of the Species		Unique environmental contribution
	Unique Location/Context	*	Aesthetic Value		Aboriginal Culture		Good example of indigenous species

### Statement of Significance:

This tree is located at the front of the property. It was planted by the residents and is approximately 40 years old. It is of good health and structure and dominates the immediate landscape. It contributes to the canopy cover and amenity of the area. It is close to the driveway but this is not causing a major issue. It is worthy of inclusion within the Significant Tree Register.

### Map:



### Photo(s):



**The Red Iron Bark**

## CITY OF WHITEHORSE- STATEMENT OF TREE SIGNIFICANCE

**Property Address: 1087 Whitehorse Road, Box Hill**

Melways Ref: 47 F9

Surveyed: 6<sup>th</sup> July 2006 (AJ)

Tree No.	1	2	3
Tree Name	<i>Ficus macrophylla</i> Moreton Bay Fig		
DBH	142 cm		
Height	12 metres		
Spread	22 metres		
Significance*	L		
Age (years)	Mature		
Condition*	Fair to good		
Assets within 4 metres	None		
SULE	20-50 years		
Notes	In grounds of St Francis Xavier Primary School		

\* Significance: N-National, S-State, R-Regional, L- Local

\* Condition: E- Excellent, G-Good, F-Fair, P-Poor, D-Dead

### Criteria for Significance:

*	Historical significance		Rare/Localised distribution		Horticultural/Genetic Value		Particularly old
	Curious growth form	*	Outstanding size		Outstanding Example of the Species		Unique environmental contribution
	Unique Location/Context	*	Aesthetic Value		Aboriginal Culture		Good example of indigenous species

### Statement of Significance:

This tree is located in the grounds of St Francis Xavier Primary School. It has a very wide spread with no major structural defects present. The canopy is slightly thin at the top although generally this tree is of good health. This tree is of historical significance to the area and the Parish and may have been planted at the time the Church was built. This tree is suitable for inclusion due to its size and historical significance.

### Map:



**Photo(s):**



**The Moreton Bay Fig**





## Significant Tree Statements

### **Box Hill North**

## CITY OF WHITEHORSE- STATEMENT OF TREE SIGNIFICANCE

**Property Address: 17 Cameron Road, Box Hill North**

Melways Ref: 47 G7

Surveyed: 14<sup>th</sup> August 2006 (AJ)

Tree No.	1	2	3
Tree Name	<i>Eucalyptus viminalis</i> ssp. <i>cygnetensis</i> Rough-barked Manna Gum		
DBH	88 cm		
Height	15 metres		
Spread	12 metres		
Significance*	L		
Age (years)	Mature		
Condition*	G		
Assets within 4 metres	None		
SULE	20-50 years		
Notes			

\* Significance: N-National, S-State, R-Regional, L- Local

\* Condition: E- Excellent, G-Good, F-Fair, P-Poor, D-Dead

### Criteria for Significance:

	Historical significance		Rare/Localised distribution		Horticultural/Genetic Value		Particularly old
	Curious growth form		Outstanding size		Outstanding Example of the Species		Unique environmental contribution
	Unique Location/Context	*	Aesthetic Value		Aboriginal Culture		Good example of indigenous species

### Statement of Significance:

This tree is of good health and fairly good structure. It does have two main stems but the union was open and sound. This tree contributes directly to the amenity of the wider landscape and is well located. It is suitable for inclusion within the Significant Tree Register.

### Site map:



### Photo(s):



**The Rough-barked Manna Gum**

## CITY OF WHITEHORSE- STATEMENT OF TREE SIGNIFICANCE

**Property Address: 83 Dorking Road, Box Hill North**

Melways Ref: 47 F7

Surveyed: July 2006 (DG)

Tree No.	1	2	3
Tree Name	<i>Pinus radiata</i> Monterey Pine (4 trees)	<i>Eucalyptus sideroxylon</i> Red Ironbark	
DBH	80-100 cm	70 cm x 2 stems	
Height	17-20 m	15 m	
Spread	10-12 m	13 m	
Significance*	L	L	
Age (years)	Mature	Mature	
Condition*	G	F-G	
Assets within 4 metres	Fence		
SULE	20-50 years	10-20 years	
Notes	Along southern boundary	Near western boundary. Requires cabling.	

\* Significance: N-National, S-State, R-Regional, L- Local

\* Condition: E- Excellent, G-Good, F-Fair, P-Poor, D-Dead

### Criteria for Significance:

	Historical significance		Rare/Localised distribution		Horticultural/Genetic Value	*	Particularly old
	Curious growth form		Outstanding size		Outstanding Example of the Species		Unique environmental contribution
	Unique Location/Context	*	Aesthetic Value		Aboriginal Culture		Good example of indigenous species

### Statement of Significance:

The Pines along the southern boundary are large trees contributing to the streetscape and neighbourhood landscape. They can be seen for some distance.

The Ironbark is one of the older examples of the species in the area; it requires cabling.

### Map:



### Photos:



**Pines along the southern boundary.**



**Ironbark**

## CITY OF WHITEHORSE- STATEMENT OF TREE SIGNIFICANCE

**Property Address:** Kerrimur Primary School, 178-184 Dorking Road, Box Hill North

Melways Ref: 47 F5

Surveyed: 6<sup>th</sup> July 2006 (AJ)

Tree No.	1	2	3
Tree Name	<i>Quercus canariensis</i> Algerian Oak		
DBH	78 cm		
Height	14 metres		
Spread	15 metres		
Significance*	L		
Age (years)	Mature		
Condition*	G		
Assets within 4 metres	None		
SULE	20-50 years		
Notes			

\* Significance: N-National, S-State, R-Regional, L- Local

\* Condition: E- Excellent, G-Good, F-Fair, P-Poor, D-Dead

### Criteria for Significance:

	Historical significance		Rare/Localised distribution		Horticultural/Genetic Value		Particularly old
	Curious growth form		Outstanding size		Outstanding Example of the Species		Unique environmental contribution
	Unique Location/Context	*	Aesthetic Value		Aboriginal Culture		Good example of indigenous species

### Statement of Significance:

Tree #1 is a large oak of good health and structure. It has a wide spread and no major defects associated with it. It contributes to the landscape of the school and the wider landscape and is worthy of inclusion within the Register.

### Map:



**The Algerian Oak**



## CITY OF WHITEHORSE- STATEMENT OF TREE SIGNIFICANCE

**Property Address: 231 Dorking Road, Box Hill North**

Melways Ref: 47 F4

Surveyed: 1<sup>st</sup> August 2006 (AJ)

Tree No.	1	2	3
Tree Name	<i>Eucalyptus melliodora</i> Yellow Box		
DBH	50+100 cm		
Height	17 metres		
Spread	22 metres		
Significance*	L		
Age (years)	Mature		
Condition*	G		
Assets within 4 metres	None		
SULE	20-50 years		
Notes			

\* Significance: N-National, S-State, R-Regional, L- Local

\* Condition: E- Excellent, G-Good, F-Fair, P-Poor, D-Dead

### Criteria for Significance:

	Historical significance		Rare/Localised distribution		Horticultural/Genetic Value		Particularly old
	Curious growth form	*	Outstanding size		Outstanding Example of the Species		Unique environmental contribution
	Unique Location/Context	*	Aesthetic Value		Aboriginal Culture	*	Good example of indigenous species

### Statement of Significance:

This tree is located in the rear of the property. It is of good health and size. It has a very wide spread and is well located. It has four main leaders and the unions between these appeared sound and given the location of this tree, they do not pose a hazard. This tree is worthy of inclusion within the Significant Tree Register.

### Site map:



### Photo(s):



**The Yellow Box**

## CITY OF WHITEHORSE- STATEMENT OF TREE SIGNIFICANCE

**Property Address:** 1-3 Gracefield Drive, Box Hill North

Melways Ref: 47 C5

Surveyed: 11<sup>th</sup> July 2006 (AJ)

Tree No.	1	2	3
Tree Name	<i>Corymbia citriodora</i> Lemon-scented Gum	<i>Corymbia maculata</i> Spotted Gum	
DBH	59 cm	61 cm	
Height	22 metres	18 metres	
Spread	18 metres	15 metres	
Significance*	L	L	
Age (years)	Mature	Mature	
Condition*	G	G	
Assets within 4 metres	None	Footpath	
SULE	20-50 years	20-50 years	
Notes			

\* Significance: N-National, S-State, R-Regional, L- Local

\* Condition: E- Excellent, G-Good, F-Fair, P-Poor, D-Dead

### Criteria for Significance:

	Historical significance		Rare/Localised distribution		Horticultural/Genetic Value		Particularly old
	Curious growth form		Outstanding size		Outstanding Example of the Species		Unique environmental contribution
	Unique Location/Context	*	Aesthetic Value		Aboriginal Culture		Good example of indigenous species

### Statement of Significance:

There are a number of Eucalypts present on this site. Only two are considered suitable for inclusion. The remaining trees were either poorly located or had structural defects present in their main structure that would render them unsuitable for inclusion. Tree #1 is located at the side of the property. Both trees #1 & 2 are of good health and structure and well located. They have minimal defect associated with them and could be expected to grow where they are for some time. They are suitable for inclusion within the Significant Tree Register.

### Map:



**Photo(s):**



**Tree #1**



**Tree #2**

## CITY OF WHITEHORSE- STATEMENT OF TREE SIGNIFICANCE

**Property Address: 2 Gracefield Drive, Box Hill North**

Melways Ref: 47 C5

Surveyed: 5<sup>th</sup> September 2006 (AJ)

Tree No.	1	2	3
Tree Name	<i>Corymbia citriodora</i> Lemon-scented Gum		
DBH	62 cm		
Height	16 metres		
Spread	16 metres		
Significance*	L		
Age (years)	Mature		
Condition*	G		
Assets within 4 metres	None		
SULE	20-50 years		
Notes			

\* Significance: N-National, S-State, R-Regional, L- Local

\* Condition: E- Excellent, G-Good, F-Fair, P-Poor, D-Dead

### Criteria for Significance:

	Historical significance		Rare/Localised distribution		Horticultural/Genetic Value		Particularly old
	Curious growth form		Outstanding size		Outstanding Example of the Species		Unique environmental contribution
	Unique Location/Context	*	Aesthetic Value		Aboriginal Culture		Good example of indigenous species

### Statement of Significance:

Tree #1 is of good health and structure. It is well located and has adequate room to continue growing in this area for some time. It contributes to the amenity and canopy cover of the wider landscape and is suitable for inclusion within the Significant Tree Register.

### Site map:



### Photo(s):



**Tree #1 – the Lemon-scented Gum**



## CITY OF WHITEHORSE- STATEMENT OF TREE SIGNIFICANCE

**Property Address: 85 Harrison Street, Box Hill North**

Melways Ref: 47 F4

Surveyed: 11<sup>th</sup> July 2006 (AJ)

Tree No.	1	2	3
Tree Name	<i>Corymbia citriodora</i> Lemon-scented Gum		
DBH	63 cm		
Height	18 metres		
Spread	14 metres		
Significance*	L		
Age (years)	Mature		
Condition*	G		
Assets within 4 metres	Footpath		
SULE	20-50 years		
Notes			

\* Significance: N-National, S-State, R-Regional, L- Local

\* Condition: E- Excellent, G-Good, F-Fair, P-Poor, D-Dead

### Criteria for Significance:

	Historical significance		Rare/Localised distribution		Horticultural/Genetic Value		Particularly old
	Curious growth form		Outstanding size		Outstanding Example of the Species		Unique environmental contribution
	Unique Location/Context	*	Aesthetic Value		Aboriginal Culture		Good example of indigenous species

### Statement of Significance:

This tree is located at the front of the property. It is of good health and structure and has no major structural defects present. It is well located and has adequate room to continue growing in this area. It is one of the larger trees in the immediate area and worthy of inclusion within the Significant Tree Register.

### Map:



### Photo(s):



**The Lemon-scented Gum**

## CITY OF WHITEHORSE- STATEMENT OF TREE SIGNIFICANCE

**Property Address:** 27 Heathfield Rise, Box Hill North

Melways Ref: 47 G5

Surveyed: 24<sup>th</sup> July 2006 (AJ)

Tree No.	1	2	3
<b>Tree Name</b>	<i>Corymbia maculata</i> Spotted Gum		
<b>DBH</b>	91 cm		
<b>Height</b>	20 metres		
<b>Spread</b>	16 metres		
<b>Significance*</b>	L		
<b>Age (years)</b>	Mature		
<b>Condition*</b>	Good		
<b>Assets within 4 metres</b>	Neighbours carport		
<b>SULE</b>	20-50 years		
<b>Notes</b>			

\* Significance: N-National, S-State, R-Regional, L- Local

\* Condition: E- Excellent, G-Good, F-Fair, P-Poor, D-Dead

### Criteria for Significance:

	Historical significance		Rare/Localised distribution		Horticultural/Genetic Value		Particularly old
	Curious growth form	*	Outstanding size		Outstanding Example of the Species		Unique environmental contribution
	Unique Location/Context	*	Aesthetic Value		Aboriginal Culture		Good example of indigenous species

### Statement of Significance:

This Spotted Gum is of good health and structure. It is located in the rear of the yard but is visible from Heathfield Rise and surrounding streets. It has lost some large limbs however there appeared to be little decay in this union. The remainder of the tree appeared sound. This tree is of significant size and contributes to the amenity of the wider landscape.

### Map:



### Photo(s):



**The Spotted Gum (photo taken from Heathfield Rise)**

## CITY OF WHITEHORSE- STATEMENT OF TREE SIGNIFICANCE

**Property Address: 14 Lawford Street, Box Hill North**

Melways Ref: 47 D4

Surveyed: July 2006 (DG)

Tree No.	1	2	3
<b>Tree Name</b>	<i>Quercus robur</i> x <i>canariensis</i> English Oak (hybrid)	<i>Quercus robur</i> x <i>canariensis</i> English Oak (hybrid)	
<b>DBH</b>	83 cm	87 cm	
<b>Height</b>	16 metres	16 metres	
<b>Spread</b>	16 metres	18 metres	
<b>Significance*</b>	L	L	
<b>Age (years)</b>	Mature	Mature	
<b>Condition*</b>	G	G	
<b>Assets within 4 metres</b>	Fence	Shed	
<b>SULE</b>	> 50 years	> 50 years	
<b>Notes</b>	Hybrid Oak; near south boundary.	Hybrid Oak; centre.	

\* Significance: N-National, S-State, R-Regional, L- Local

\* Condition: E- Excellent, G-Good, F-Fair, P-Poor, D-Dead

### Criteria for Significance:

	Historical significance		Rare/Localised distribution		Horticultural/Genetic Value		Particularly old
	Curious growth form	*	Outstanding size		Outstanding Example of the Species		Unique environmental contribution
	Unique Location/Context	*	Aesthetic Value		Aboriginal Culture		Good example of indigenous species

### Statement of Significance:

The two Oaks are very large and contribute significant value to the broader landscape. They can be seen from around the neighbourhood. (The Silky Oak on the site is not significant.)

### Site map:



### Photo(s):





## CITY OF WHITEHORSE- STATEMENT OF TREE SIGNIFICANCE

**Property Address:** 15 Lawford Street, Box Hill North

Melways Ref: 47 D4

Surveyed: 11<sup>th</sup> July 2006 (AJ)

Tree No.	1	2	3
Tree Name	<i>Quercus canariensis</i> Algerian Oak		
DBH	69 cm		
Height	18 metres		
Spread	16 metres		
Significance*	L		
Age (years)	50 years		
Condition*	G		
Assets within 4 metres	None		
SULE	20-50 years		
Notes			

\* Significance: N-National, S-State, R-Regional, L- Local

\* Condition: E- Excellent, G-Good, F-Fair, P-Poor, D-Dead

### Criteria for Significance:

	Historical significance		Rare/Localised distribution		Horticultural/Genetic Value		Particularly old
	Curious growth form		Outstanding size		Outstanding Example of the Species		Unique environmental contribution
	Unique Location/Context	*	Aesthetic Value		Aboriginal Culture		Good example of indigenous species

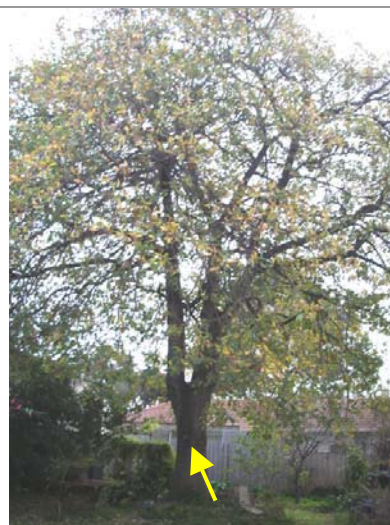
### Statement of Significance:

This tree is located in the rear of the property. It is of good health and structure and has good form. It contributes to the amenity and canopy cover of the wider area. It is well located and has adequate room to continue growing. This tree is worthy of inclusion in the Significant Tree Register due to its location, health, size and form.

### Map:



### Photo(s):



**The Algerian Oak**



<b>CITY OF WHITEHORSE- STATEMENT OF TREE SIGNIFICANCE</b>
---

This page is intentionally blank  
Statement of Tree Significance deleted by Amendment C 83

## CITY OF WHITEHORSE- STATEMENT OF TREE SIGNIFICANCE

**Property Address:** 119 Nelson Road, Box Hill North

Melways Ref: 47 C7

Surveyed: 11<sup>th</sup> July 2006 (AJ)

Tree No.	1	2	3
Tree Name	<i>Quercus cerris</i> Turkey Oak		
DBH	63 cm		
Height	14 metres		
Spread	17 metres		
Significance*	L		
Age (years)	Mature		
Condition*	G		
Assets within 4 metres	Footpath		
SULE	20-50 years		
Notes			

\* Significance: N-National, S-State, R-Regional, L- Local

\* Condition: E- Excellent, G-Good, F-Fair, P-Poor, D-Dead

### Criteria for Significance:

	Historical significance		Rare/Localised distribution		Horticultural/Genetic Value		Particularly old
	Curious growth form	*	Outstanding size		Outstanding Example of the Species		Unique environmental contribution
	Unique Location/Context	*	Aesthetic Value		Aboriginal Culture		Good example of indigenous species

### Statement of Significance:

Tree #1, located on the northern side of the driveway, is of good health and structure with a wide canopy spread. It has adequate room to grow here and has a good life expectancy. It is suitable for inclusion within the Significant Tree Register.

### Map:



### Photo(s):



**Tree #1**

## CITY OF WHITEHORSE- STATEMENT OF TREE SIGNIFICANCE

**Property Address: 79 Peter Street, Box Hill North**

Melways Ref: 47 D4

Surveyed: 11 July 2006 (AJ)

Tree No.	1	2	3
Tree Name	<i>Quercus robur</i> English Oak		
DBH	70 cm		
Height	16 metres		
Spread	15 metres		
Significance*	L		
Age (years)	Mature		
Condition*	G		
Assets within 4 metres	Footpath		
SULE	20-50 years		
Notes			

\* Significance: N-National, S-State, R-Regional, L- Local

\* Condition: E- Excellent, G-Good, F-Fair, P-Poor, D-Dead

### Criteria for Significance:

	Historical significance		Rare/Localised distribution		Horticultural/Genetic Value		Particularly old
	Curious growth form		Outstanding size		Outstanding Example of the Species		Unique environmental contribution
	Unique Location/Context	*	Aesthetic Value		Aboriginal Culture		Good example of indigenous species

### Statement of Significance:

This tree is of good health and structure. It is in the front corner of the property and it directly contributes to the amenity and streetscape of Peter Street. It is well located and has adequate space to grow. It is located close to the footpath however there was no structural damage to the path at this point. This tree is worthy of inclusion within the Significant Tree Register.

### Map:



### Photo(s):



**The English Oak**

## CITY OF WHITEHORSE- STATEMENT OF TREE SIGNIFICANCE

**Property Address: 64 Severn Street, Box Hill North**

Melways Ref: 47 D8

Surveyed: 6<sup>th</sup> July 2006 (AJ)

Tree No.	1	2	3
Tree Name	<i>Phoenix canariensis</i> Canary Island Date Palm		
DBH	70 cm		
Height	11 metres		
Spread	7 metres		
Significance*	L		
Age (years)	Mature		
Condition*	G		
Assets within 4 metres	Dwelling		
SULE	10-20 years		
Notes			

\* Significance: N-National, S-State, R-Regional, L- Local

\* Condition: E- Excellent, G-Good, F-Fair, P-Poor, D-Dead

### Criteria for Significance:

	Historical significance		Rare/Localised distribution		Horticultural/Genetic Value		Particularly old
	Curious growth form		Outstanding size		Outstanding Example of the Species		Unique environmental contribution
	Unique Location/Context	*	Aesthetic Value		Aboriginal Culture		Good example of indigenous species

### Statement of Significance:

This Palm tree is of good health and structure. It is visible from the surrounding area and does contribute to the overall landscape. It is reasonably close to the dwelling however due to its species, this is not considered a significant issue. This tree is suitable for inclusion within the Register.

### Map:



### Photo(s):



**The Canary Island Date Palm**



## CITY OF WHITEHORSE- STATEMENT OF TREE SIGNIFICANCE

**Property Address: 34 Shannon Street, Box Hill North**

Melways Ref: 47 E6

Surveyed: 11<sup>th</sup> July 2006 (AJ)

Tree No.	1	2	3
Tree Name	<i>Eucalyptus cinerea</i> Argyle Apple		
DBH	62 cm		
Height	14 metres		
Spread	11 metres		
Significance*	L		
Age (years)	Mature		
Condition*	Fair to good		
Assets within 4 metres	Driveway and footpath		
SULE	20-50 years		
Notes			

\* Significance: N-National, S-State, R-Regional, L- Local

\* Condition: E- Excellent, G-Good, F-Fair, P-Poor, D-Dead

### Criteria for Significance:

	Historical significance		Rare/Localised distribution		Horticultural/Genetic Value		Particularly old
	Curious growth form		Outstanding size		Outstanding Example of the Species		Unique environmental contribution
	Unique Location/Context	*	Aesthetic Value		Aboriginal Culture		Good example of indigenous species

### Statement of Significance:

This tree is located at the front of the property and it directly contributes to the streetscape of Shannon Street. It is of good health and fairly good structure. It is causing some lifting and cracking of the driveway however this is not posing a high hazard at this point. This is one of the larger trees in the immediate area and is worthy of inclusion within the Significant Tree Register.

### Map:



### Photo(s):



**The Argyle Apple**

## CITY OF WHITEHORSE- STATEMENT OF TREE SIGNIFICANCE

**Property Address: 800 Station Street, Box Hill North**

Melways Ref: 47 D7

Surveyed: 6<sup>th</sup> July 2006 (AJ)

Tree No.	1	2	3
Tree Name	<i>Araucaria bidwillii</i> Bunya Pine		
DBH	118 cm		
Height	18 metres		
Spread	14 metres		
Significance*	L		
Age (years)	Mature		
Condition*	E		
Assets within 4 metres	None		
SULE	20-50 years		
Notes			

\* Significance: N-National, S-State, R-Regional, L- Local

\* Condition: E- Excellent, G-Good, F-Fair, P-Poor, D-Dead

### Criteria for Significance:

	Historical significance		Rare/Localised distribution		Horticultural/Genetic Value		Particularly old
	Curious growth form	*	Outstanding size	*	Outstanding Example of the Species		Unique environmental contribution
	Unique Location/Context	*	Aesthetic Value		Aboriginal Culture		Good example of indigenous species

### Statement of Significance:

This tree is of very good health and structure. It is located on the boundary next to Station Street and contributes directly to the streetscape of the area. This is not a commonly seen species in this area, particularly within private gardens. It has a very large trunk diameter. This tree is worthy of inclusion within the Significant Tree Register.

### Map:



### Photo(s):



**The Bunya Pine**

## CITY OF WHITEHORSE- STATEMENT OF TREE SIGNIFICANCE

**Property Address:** 66 Watts Street, Box Hill North

Melways Ref: 47 E8

Surveyed: 5<sup>th</sup> September 2006 (AJ)

Tree No.	1	2	3
Tree Name	<i>Quercus palustris</i> Pin Oak		
DBH	82 cm		
Height	18 metres		
Spread	14 metres		
Significance*	L		
Age (years)	Mature		
Condition*	G		
Assets within 4 metres	Garage		
SULE	20-50 years		
Notes			

\* Significance: N-National, S-State, R-Regional, L- Local

\* Condition: E- Excellent, G-Good, F-Fair, P-Poor, D-Dead

### Criteria for Significance:

	Historical significance		Rare/Localised distribution		Horticultural/Genetic Value		Particularly old
	Curious growth form	*	Outstanding size	*	Outstanding Example of the Species		Unique environmental contribution
	Unique Location/Context	*	Aesthetic Value		Aboriginal Culture		Good example of indigenous species

### Statement of Significance:

This tree is located in the rear yard. It is of very good health and structure and is a good example of its species. It has a very large base with good buttress root formation. It is one of the largest trees within the immediate area and it contributes to the amenity of the wider landscape. It is suitable for inclusion within the Significant Tree Register.

### Site map:



### Photo(s):



**The Pin Oak**



## CITY OF WHITEHORSE- STATEMENT OF TREE SIGNIFICANCE

**Property Address:** 137-139 Woodhouse Grove, Box Hill North

Melways Ref: 47 E5

Surveyed: 1<sup>st</sup> August 2006 (AJ)

Tree No.	1	2	3
Tree Name	<i>Quercus robur</i> English Oak		
DBH	95 cm		
Height	12 metres		
Spread	14 metres		
Significance*	L		
Age (years)	Mature		
Condition*	G		
Assets within 4 metres	Footpath		
SULE	20-50 years		
Notes			

\* Significance: N-National, S-State, R-Regional, L- Local

\* Condition: E- Excellent, G-Good, F-Fair, P-Poor, D-Dead

### Criteria for Significance:

	Historical significance		Rare/Localised distribution		Horticultural/Genetic Value		Particularly old
	Curious growth form		Outstanding size		Outstanding Example of the Species		Unique environmental contribution
	Unique Location/Context	*	Aesthetic Value		Aboriginal Culture		Good example of indigenous species

### Statement of Significance:

This tree is of good health and structure. It has a good canopy spread and good form. It is located near the footpath but is not causing any significant damage at this point. Due to its location it contributes directly to the streetscape of Woodhouse Grove and should be included.

### Site map:



### Photo(s):



**The English Oak**





## Significant Tree Statements

### **Box Hill South**

## CITY OF WHITEHORSE- STATEMENT OF TREE SIGNIFICANCE

**Property Address: 10 Arcadia Street, Box Hill South**

Melways Ref: 47 D12

Surveyed: 21<sup>st</sup> July 2006 (AJ)

Tree No.	1	2	3
Tree Name	<i>Lophostemon confertus</i> Brush Box		
DBH	49 cm		
Height	10 metres		
Spread	8 metres		
Significance*			
Age (years)	Mature		
Condition*	G		
Assets within 4 metres	Footpath		
SULE	20-50 years		
Notes			

\* Significance: N-National, S-State, R-Regional, L- Local

\* Condition: E- Excellent, G-Good, F-Fair, P-Poor, D-Dead

### Criteria for Significance:

	Historical significance		Rare/Localised distribution		Horticultural/Genetic Value		Particularly old
	Curious growth form		Outstanding size	*	Outstanding Example of the Species		Unique environmental contribution
	Unique Location/Context	*	Aesthetic Value		Aboriginal Culture		Good example of indigenous species

### Statement of Significance:

This tree is located in the front of the property. It is of good health and structure and is reasonably large for its species. This is a commonly seen street tree species however is not that commonly seen in residential gardens. It has a good form and it contributes directly to the streetscape of Arcadia Street. It should be included within the Register.

### Map:



### Photo(s):



**The Brush Box**

## CITY OF WHITEHORSE- STATEMENT OF TREE SIGNIFICANCE

**Property Address:** 5 & 6 Arundel Court, Box Hill South

Melways Ref: 61 C3

Surveyed: 21<sup>st</sup> July 2006 (AJ)

Tree No.	1	2	3
Tree Name	<i>Eucalyptus saligna</i> Sydney Blue Gum		
DBH	77 cm		
Height	21 metres		
Spread	13 metres		
Significance*	L		
Age (years)	Mature		
Condition*	G		
Assets within 4 metres	Footpath		
SULE	20-50 years		
Notes			

\* Significance: N-National, S-State, R-Regional, L- Local

\* Condition: E- Excellent, G-Good, F-Fair, P-Poor, D-Dead

### Criteria for Significance:

	Historical significance		Rare/Localised distribution		Horticultural/Genetic Value		Particularly old
	Curious growth form	*	Outstanding size		Outstanding Example of the Species		Unique environmental contribution
	Unique Location/Context	*	Aesthetic Value		Aboriginal Culture		Good example of indigenous species

### Statement of Significance:

This tree is located at the front of the property between 5 & 6 Arundel Court and contributes directly to the streetscape. It is a very large tree and is of good health and fair structure. It has some tight forks in the main structure however these have been supported by a cable system in the canopy reducing the hazard. This tree is worthy of inclusion within the Register.

### Map:



### Photo(s):



**The Sydney Blue Gum**

## CITY OF WHITEHORSE- STATEMENT OF TREE SIGNIFICANCE

**Property Address: 31 Cadorna Street, Box Hill South**

Melways Ref: 61 B4

Surveyed: July 2006 (DG)

Tree No.	1	2	3
Tree Name	<i>Eucalyptus cinerea</i> Argyle Apple	<i>Eucalyptus cinerea</i> Argyle Apple	
DBH	60 cm	60 cm	
Height	16 metres	15 metres	
Spread	12 metres	12 metres	
Significance*	L	L	
Age (years)	Mature	Mature	
Condition*	Fair to good	Fair to good	
Assets within 4 metres	None	None	
SULE	20-50 years	20-50 years	
Notes	Northwest	Northeast	

\* Significance: N-National, S-State, R-Regional, L- Local

\* Condition: E- Excellent, G-Good, F-Fair, P-Poor, D-Dead

### Criteria for Significance:

	Historical significance		Rare/Localised distribution		Horticultural/Genetic Value		Particularly old
	Curious growth form		Outstanding size		Outstanding Example of the Species		Unique environmental contribution
	Unique Location/Context	*	Aesthetic Value		Aboriginal Culture		Good example of indigenous species

### Statement of Significance:

Both trees are in good condition and contribute significantly to local amenity and landscape values. They are large and can be seen from many points in the neighbourhood. They are good examples of this native species.

### Map:



### Photo(s):







## CITY OF WHITEHORSE- STATEMENT OF TREE SIGNIFICANCE

**Property Address:** 822 Canterbury Road, Box Hill South

**Melways Ref:** 47 C12

**Surveyed:** N/A

Tree No.	1	2	3
Tree Name	<i>Quercus</i> sp. Oak		
DBH			
Height	14m		
Spread	10m		
Significance*	L		
Age (years)			
Condition*			
Assets within 4 metres			
SULE			
Notes			

\* Significance: N-National, S-State, R-Regional, L- Local

\* Condition: E- Excellent, G-Good, F-Fair, P-Poor, D-Dead

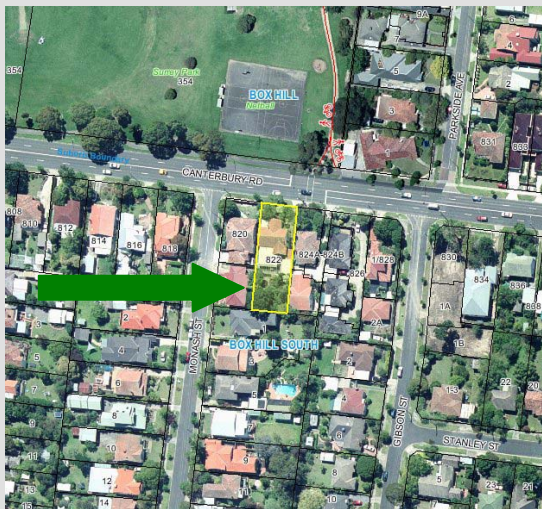
### Criteria for Significance:

	Historical significance		Rare/Localised distribution		Horticultural/Genetic Value		Particularly old
	Curious growth form	*	Outstanding size		Outstanding Example of the Species		Unique environmental contribution
	Unique Location/Context	*	Aesthetic Value		Aboriginal Culture		Good example of indigenous species

### Statement of Significance:

This tree is a large species that dominates the rear yard of the property and is visible from surrounding streets, contributing to the overall landscape and amenity of the area.

### Map:



### Photo(s):



## CITY OF WHITEHORSE- STATEMENT OF TREE SIGNIFICANCE

**Property Address: 280 Elgar Road, Box Hill South**

Melways Ref: 61 A1

Surveyed: July 2006 (DG)

Tree No.	1	2	3
<b>Tree Name</b>	<i>Corymbia citriodora</i> Lemon-scented Gum	<i>Arbutus unedo</i> Irish Strawberry Tree	
<b>DBH</b>	74 cm	40 cm x 3 stems	
<b>Height</b>	17 metres	7 metres	
<b>Spread</b>	20 metres	8 metres	
<b>Significance*</b>	L	L	
<b>Age (years)</b>	Mature	Mature	
<b>Condition*</b>	G	F	
<b>Assets within 4 metres</b>	~1 metre to house	None	
<b>SULE</b>	20-50 years	20-50 years	
<b>Notes</b>			

\* Significance: N-National, S-State, R-Regional, L- Local

\* Condition: E- Excellent, G-Good, F-Fair, P-Poor, D-Dead

### Criteria for Significance:

Historical significance		Rare/Localised distribution		Horticultural/Genetic Value		Particularly old
Curious growth form	*	Outstanding size	*	Outstanding Example of the Species		Unique environmental contribution
Unique Location/Context	*	Aesthetic Value		Aboriginal Culture		Good example of indigenous species

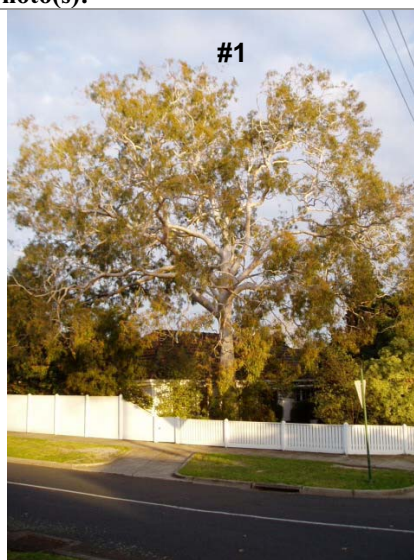
### Statement of Significance:

The Lemon-scented Gum is an outstanding example of this species. It has a very large spreading canopy that has been well maintained. It can be seen from many points around the neighbourhood and is a local landmark. Although close to the house, its size and form warrant inclusion on the Register. The Irish Strawberry Tree contributes to the amenity of the neighbourhood and streetscape. It is one of the older examples of the species in the area.

### Site map:



### Photo(s):



## CITY OF WHITEHORSE- STATEMENT OF TREE SIGNIFICANCE

**Property Address: 35 Fowler Street, Box Hill South**

Melways Ref: 61 B2

Surveyed: 2006 (DG)

Tree No.	1	2	3
Tree Name	<i>Corymbia citriodora</i> Lemon-scented Gum		
DBH	85 cm		
Height	15 metres		
Spread	12 metres		
Significance*	L		
Age (years)	Mature		
Condition*	G		
Assets within 4 metres	None		
SULE	20-50 years		
Notes	Some limb shed		

\* Significance: N-National, S-State, R-Regional, L- Local

\* Condition: E- Excellent, G-Good, F-Fair, P-Poor, D-Dead

### Criteria for Significance:

	Historical significance		Rare/Localised distribution		Horticultural/Genetic Value		Particularly old
	Curious growth form		Outstanding size		Outstanding Example of the Species		Unique environmental contribution
	Unique Location/Context	*	Aesthetic Value		Aboriginal Culture		Good example of indigenous species

### Statement of Significance:

The Lemon-scented Gum is a good example of this native species. It contributes significantly to the streetscape and neighbourhood amenity. It is a large tree with a large stem girth.

### Site map:



### Photo(s):





## CITY OF WHITEHORSE- STATEMENT OF TREE SIGNIFICANCE

**Property Address:** 43 Kitchener Street, Box Hill South

Melways Ref: 61 E2

Surveyed: 21<sup>st</sup> July 2006 (AJ)

Tree No.	1	2	3
Tree Name	<i>Corymbia citriodora</i> Lemon-scented Gum	<i>Corymbia maculata</i> Spotted Gum	
DBH	65 cm	72 cm	
Height	18 metres	20 metres	
Spread	15 metres	15 metres	
Significance*	L	L	
Age (years)	Mature	Mature	
Condition*	G	G	
Assets within 4 metres	None	Footpath	
SULE	20-50 years	20-50 years	
Notes	Rear	Front	

\* Significance: N-National, S-State, R-Regional, L- Local

\* Condition: E- Excellent, G-Good, F-Fair, P-Poor, D-Dead

### Criteria for Significance:

	Historical significance		Rare/Localised distribution		Horticultural/Genetic Value		Particularly old
	Curious growth form		Outstanding size		Outstanding Example of the Species		Unique environmental contribution
	Unique Location/Context	*	Aesthetic Value		Aboriginal Culture		Good example of indigenous species

### Statement of Significance:

These two trees are both of good health and structure. They have no significant defects and they contribute to the amenity and canopy cover of the wider area. Tree #2 has caused some lifting of the footpath however this has been recently repaired and should be manageable. These trees should be included within the Significant Tree Study.

### Map:



**Photo(s):**



**Tree #1**



**Tree #2**

## CITY OF WHITEHORSE- STATEMENT OF TREE SIGNIFICANCE

**Property Address:** 23 Latrobe Street, Box Hill South

Melways Ref: 61 D1

Surveyed: 21<sup>st</sup> July 2006 (AJ)

Tree No.	1	2	3
Tree Name	<i>Casuarina cunninghamiana</i> Drooping She-oak		
DBH	75 cm		
Height	16 metres		
Spread	12 metres		
Significance*	L		
Age (years)	Mature		
Condition*	G		
Assets within 4 metres	None		
SULE	20-50 years		
Notes			

\* Significance: N-National, S-State, R-Regional, L- Local

\* Condition: E- Excellent, G-Good, F-Fair, P-Poor, D-Dead

### Criteria for Significance:

	Historical significance		Rare/Localised distribution		Horticultural/Genetic Value		Particularly old
	Curious growth form		Outstanding size	*	Outstanding Example of the Species		Unique environmental contribution
	Unique Location/Context	*	Aesthetic Value		Aboriginal Culture		Good example of indigenous species

### Statement of Significance:

This tree is located in the rear of the property. It is of good health and structure and a very good size for its species. It is visible from Latrobe street and it contributes to the amenity and canopy cover of the wider landscape. It is suitable for inclusion within the Significant Tree Register.

### Map:



### Photo(s):



**Tree #1**

## CITY OF WHITEHORSE- STATEMENT OF TREE SIGNIFICANCE

**Property Address: 17 Milton Crescent, Box Hill South**

Melways Ref: 61 B2

Surveyed: July 2006 (DG)

Tree No.	1	2	3
Tree Name	<i>Quercus canariensis</i> Algerian Oak		
DBH	75 cm		
Height	12 metres		
Spread	12 metres		
Significance*	L		
Age (years)	Mature		
Condition*	G		
Assets within 4 metres	Brick fence		
SULE	20-50 years		
Notes			

\* Significance: N-National, S-State, R-Regional, L- Local

\* Condition: E- Excellent, G-Good, F-Fair, P-Poor, D-Dead

### Criteria for Significance:

	Historical significance		Rare/Localised distribution		Horticultural/Genetic Value		Particularly old
	Curious growth form		Outstanding size		Outstanding Example of the Species		Unique environmental contribution
	Unique Location/Context	*	Aesthetic Value		Aboriginal Culture		Good example of indigenous species

### Statement of Significance:

This tree is located at the front of the property. It is of good health and structure and contributes to the amenity of the streetscape. It is well located and suitable for inclusion within the Significant Tree Register.

### Site map:



### Photo(s):





## CITY OF WHITEHORSE- STATEMENT OF TREE SIGNIFICANCE

**Property Address:** Unit 1, 34 Monash Street, Box Hill South

Melways Ref: 61 B1

Surveyed: 21<sup>st</sup> July 2006 (AJ)

Tree No.	1	2	3
Tree Name	<i>Corymbia citriodora</i> Lemon-scented Gum		
DBH	54 cm		
Height	17 metres		
Spread	14 metres		
Significance*	L		
Age (years)	Mature		
Condition*	G		
Assets within 4 metres	None		
SULE	20-50 years		
Notes			

\* Significance: N-National, S-State, R-Regional, L- Local

\* Condition: E- Excellent, G-Good, F-Fair, P-Poor, D-Dead

### Criteria for Significance:

	Historical significance		Rare/Localised distribution		Horticultural/Genetic Value		Particularly old
	Curious growth form		Outstanding size		Outstanding Example of the Species		Unique environmental contribution
	Unique Location/Context	*	Aesthetic Value		Aboriginal Culture		Good example of indigenous species

### Statement of Significance:

This tree is located outside Unit 1. It is of good health and good structure and has no significant defects. It is a good example of its species. It does have some limbs overhanging the dwelling but as the structure of the tree is good this is not considered an issue. There is adequate room for the further development of this tree. It should be included within the Significant Tree Register.

### Map:



### Photo(s):



**The Lemon-scented Gum**

## CITY OF WHITEHORSE- STATEMENT OF TREE SIGNIFICANCE

**Property Address: 20 Monash Street, Box Hill South**

Melways Ref: 47 B12

Surveyed: 21<sup>st</sup> July 2006 (AJ)

Tree No.	1	2	3
Tree Name	<i>Eucalyptus globulus</i> ssp. <i>bicostata</i> Eurabbie	<i>Corymbia maculata</i> Spotted Gum	
DBH	76 cm	52 cm	
Height	14 metres	17 metres	
Spread	15 metres	10 metres	
Significance*	L	L	
Age (years)	Mature	Mature	
Condition*	G	G	
Assets within 4 metres	Footpath and small retaining wall	None	
SULE	20-50 years	20-50 years	
Notes			

\* Significance: N-National, S-State, R-Regional, L- Local

\* Condition: E- Excellent, G-Good, F-Fair, P-Poor, D-Dead

### Criteria for Significance:

	Historical significance		Rare/Localised distribution		Horticultural/Genetic Value		Particularly old
	Curious growth form		Outstanding size		Outstanding Example of the Species		Unique environmental contribution
	Unique Location/Context	*	Aesthetic Value		Aboriginal Culture		Good example of indigenous species

### Statement of Significance:

These two trees are located in the front of the property. They are both of good health and structure and contribute directly to the streetscape of Monash Street. Tree #1, the Eurabbie, is close to the footpath but has not caused any lifting at this point. Both trees should be included in the Significant Register for their contribution to the wider landscape and canopy cover of the area.

### Map:



**Photo(s):**



**Tree #1**



**Tree #2**

## CITY OF WHITEHORSE- STATEMENT OF TREE SIGNIFICANCE

**Property Address: 1215 Riversdale Road, Box Hill South**

Melways Ref: 61 C3

Surveyed: 8<sup>th</sup> September 2006 (AJ)

Tree No.	1	2	3
Tree Name	<i>Eucalyptus denticulata</i> Shining Gum	<i>Eucalyptus melliodora</i> Yellow Box	<i>Eucalyptus melliodora</i> Yellow Box
DBH	92 cm	61 cm	71 cm
Height	20 metres	14 metres	16 metres
Spread	18 metres	9 metres	11 metres
Significance*	L	L	L
Age (years)	Mature	Mature	Mature
Condition*	G	G	G
Assets within 4 metres	None	Driveway	Driveway
SULE	20-50 years	20-50 years	20-50 years
Notes			

\* Significance: N-National, S-State, R-Regional, L- Local

\* Condition: E- Excellent, G-Good, F-Fair, P-Poor, D-Dead

### Criteria for Significance:

	Historical significance		Rare/Localised distribution		Horticultural/Genetic Value		Particularly old
	Curious growth form		Outstanding size		Outstanding Example of the Species		Unique environmental contribution
	Unique Location/Context	*	Aesthetic Value		Aboriginal Culture	*	Good example of indigenous species

### Statement of Significance:

All three trees are located in common property and are worthy of inclusion. Tree #1 is a very large tree. It is of good health and structure. It has minor decay in one limb but this is not considered a significant defect. It contributes to the amenity and canopy cover of the wider landscape. Tree #2 & 3 are both indigenous trees. They are of good health and fairly good structure. They also contribute to the amenity of the area. Other trees on this property are not suitable for inclusion.

### Site map:





**Photo(s):**



**Tree #1**



**Tree #2**



**Tree #3**

## CITY OF WHITEHORSE- STATEMENT OF TREE SIGNIFICANCE

**Property Address:** 1230 Riversdale Road, Box Hill South

Melways Ref: 61 C3

Surveyed: 21<sup>st</sup> July 2006 (AJ)

Tree No.	1	2	3
Tree Name	<i>Corymbia citriodora</i> Lemon-scented Gum	<i>Corymbia citriodora</i> Lemon-scented Gum	
DBH	58 cm	47 cm	
Height	18 metres	18 metres	
Spread	14 metres	16 metres	
Significance*	L	L	
Age (years)	Mature	Mature	
Condition*	G	G	
Assets within 4 metres	None	None	
SULE	20-50 years	20-50 years	
Notes			

\* Significance: N-National, S-State, R-Regional, L- Local

\* Condition: E- Excellent, G-Good, F-Fair, P-Poor, D-Dead

### Criteria for Significance:

	Historical significance		Rare/Localised distribution		Horticultural/Genetic Value		Particularly old
	Curious growth form		Outstanding size		Outstanding Example of the Species		Unique environmental contribution
	Unique Location/Context	*	Aesthetic Value		Aboriginal Culture		Good example of indigenous species

### Statement of Significance:

There are three Lemon-scented Gums located in the front of the Lions Hall. Trees #1 & 2 are of good health with no significant defects and they contribute to the overall amenity of the area. The Girl Guides planted these trees when this hall was originally used as a meeting hall. Trees #1 & 2 are suitable for inclusion within the Significant Tree Register.

### Map:



**Photo(s):**



**Tree #1**



**Tree #2**

## CITY OF WHITEHORSE- STATEMENT OF TREE SIGNIFICANCE

**Property Address: 2 Roberts Avenue, Box Hill South**

Melways Ref: 61 E4

Surveyed: 5<sup>th</sup> September 2006 (AJ)

Tree No.	1	2	3
Tree Name	<i>Eucalyptus melliodora</i> Yellow Box		
DBH	83 cm		
Height	19 metres		
Spread	15 metres		
Significance*	L		
Age (years)	Mature		
Condition*	G		
Assets within 4 metres	None		
SULE	20-50 years		
Notes			

\* Significance: N-National, S-State, R-Regional, L- Local

\* Condition: E- Excellent, G-Good, F-Fair, P-Poor, D-Dead

### Criteria for Significance:

	Historical significance		Rare/Localised distribution		Horticultural/Genetic Value		Particularly old
	Curious growth form		Outstanding size		Outstanding Example of the Species		Unique environmental contribution
	Unique Location/Context	*	Aesthetic Value		Aboriginal Culture	*	Good example of indigenous species

### Statement of Significance:

Tree #1, the Yellow Box, is of good health and structure. It has a few leaders but the union was sound. This tree is visible from the surrounding streets and it contributes to the amenity of the wider landscape and is suitable for inclusion.

### Site map:



### Photo(s):



**Tree #1**



## CITY OF WHITEHORSE- STATEMENT OF TREE SIGNIFICANCE

**Property Address: Kingswood College, 355 Station Street, Box Hill**

Melways Ref: 61 C1

Surveyed: 13<sup>th</sup> September 2006 (AJ)

Tree groups	1	2	3	4
<b>Tree Name</b>	<i>Quercus canariensis</i> x 18 Algerian Oak	<i>Ulmus Xhollandica</i> x 5 & <i>Quercus robur</i> x 2 Dutch Elm and English Oak	<i>Quercus robur</i> and <i>Quercus canariensis</i> (~ 6 trees) English and Algerian Oaks	<i>Quercus canariensis</i> Algerian Oak (Single tree)
<b>DBH</b>	45-70 cm	50-70 cm	50-80 cm	114 cm
<b>Height</b>	10-14 metres	10-13 metres	10-15 metres	12 metres
<b>Spread</b>	10-14 metres	10-15 metres	10-15 metres	17 metres
<b>Significance*</b>	L (Recommendation is to place overlay over entire site and all trees.)			
<b>Age (years)</b>	Mature	Mature	Mature	Mature
<b>Condition*</b>	Fair to good	Fair to good	Fair to good	Good
<b>Assets within 4 metres</b>	None	Carpark	Carpark	None
<b>SULE</b>	20-50 years	20-50 years	20-50 years	20-50 years
<b>Notes</b>	Located along east boundary of soccer field	Located along north boundary of soccer field	Located in the carpark in Piedmont Street	Located at the north end of football oval near Piedmont Street.

Tree groups	5	6	7
<b>Tree Name</b>	<i>Quercus canariensis</i> , <i>Quercus robur</i> & <i>Ulmus Xhollandica</i> Algerian Oak, English Oak and Dutch Elm (~16 trees)	<i>Quercus castaneifolia</i> and <i>Quercus robur</i> (~6 trees) Chestnut-leaved Oak and English Oak	<i>Ficus rubiginosa</i> Port Jackson Fig (single tree)
<b>DBH</b>	40-115 cm	40-100 cm	Multi-trunked
<b>Height</b>	12-14 metres	12-15 metres	10 metres
<b>Spread</b>	10-18 metres	10-18 metres	16 metres
<b>Significance*</b>	L (Recommendation is to place overlay over entire site and all trees.)		
<b>Age (years)</b>	Mature	Mature	Mature
<b>Condition*</b>	Good	Good	Good
<b>Assets within 4 metres</b>	None	None	Footpath
<b>SULE</b>	20-50 years	20-50 years	20-50 years
<b>Notes</b>	Surrounding football oval	Outside junior school	Outside junior school

Tree groups	8	9	10
<b>Tree Name</b>	<i>Populus nigra</i> 'Italica' Lombardy Poplar (3 trees)	<i>Eucalyptus</i> spp. Various eucalypts planted in a mass.	<i>Ulmus Xhollandica</i> x 14 trees Dutch Elm
<b>DBH</b>	50-70 cm	15-60 cm	40-60 cm
<b>Height</b>	15 metres	8-15 metres	8-10 mature
<b>Spread</b>	5 metres	5-12 metres	10-12 mature
<b>Significance*</b>	L (Recommendation is to place overlay over entire site and all trees.)		
<b>Age (years)</b>	Mature	Semi-mature to mature	Mature
<b>Condition*</b>	Fair	Fair to good	G
<b>Assets within 4 metres</b>	Roadway		
<b>SULE</b>	10-20 years	20-50 years	20-50 years
<b>Notes</b>	Near south-west oval on north side	North west side of south-west oval	Western boundary

\* Significance: N-National, S-State, R-Regional, L- Local

\* Condition: E- Excellent, G-Good, F-Fair, P-Poor, D-Dead

**Criteria for Significance:**

*	Historical significance		Rare/Localised distribution		Horticultural/Genetic Value		Particularly old
	Curious growth form	*	Outstanding size	*	Outstanding Example of the Species		Unique environmental contribution
	Unique Location/Context	*	Aesthetic Value		Aboriginal Culture		Good example of indigenous species

**Statement of Significance:**

This is a very large site with a number of significant trees. The trees listed above are some but not all of the significant trees on this site. They contribute to the amenity of this area and this site is significant within Box Hill South. It is recommended that all established trees on the site be included in the Significant Tree Register. (The school has an arboricultural survey and report that is updated yearly.)

**Site map:**





**Photo(s):**



**Group 1 – Algerian Oak**



**Group 2 – various oaks and elms**



**Group 3 – oaks in the carpark**



**Tree #4 – a particularly large Algerian Oak**



**Group #5 – more oaks and elms**



**Group #6 – some of the large oaks outside the Junior School**



**Tree #7 – the Port Jackson Fig**



**Group #8 – the Poplars**



**Group #9 – the mass planting of eucalypts**



**Group #10 – the Elms on the  
western boundary**



## CITY OF WHITEHORSE- STATEMENT OF TREE SIGNIFICANCE

**Property Address: 372 Station Street, Box Hill South**

Melways Ref: 61 C1

Surveyed: 5<sup>th</sup> September 2006 (AJ)

Tree No.	1	2	3
Tree Name	<i>Quercus robur</i> English Oak		
DBH	80 cm		
Height	13 metres		
Spread	16 metres		
Significance*	L		
Age (years)	Mature		
Condition*	G		
Assets within 4 metres	Footpath		
SULE	20-50 years		
Notes			

\* Significance: N-National, S-State, R-Regional, L- Local

\* Condition: E- Excellent, G-Good, F-Fair, P-Poor, D-Dead

### Criteria for Significance:

	Historical significance		Rare/Localised distribution		Horticultural/Genetic Value		Particularly old
	Curious growth form		Outstanding size		Outstanding Example of the Species		Unique environmental contribution
	Unique Location/Context	*	Aesthetic Value		Aboriginal Culture		Good example of indigenous species

### Statement of Significance:

This tree is located in the rear yard. It is of good health and structure with a wide spread. Its main stem is growing on the boundary and encroaches onto the footpath. It contributes directly to the streetscape of Station and David streets and is worthy of inclusion. The footpath will require repairing and the only option would be to redirect it around the buttress of this tree and onto the naturestrip slightly.

### Site map:



### Photo(s):



**The English Oak**



**The base of the tree next to the footpath**