

## CITY OF WHITEHORSE- STATEMENT OF TREE SIGNIFICANCE

**Property Address: 6 Ferguson Street, Mitcham**

Melways Ref: 49 C10

Surveyed: 30<sup>th</sup> August 2006 (AJ)

Tree No.	1	2	3
Tree Name	<i>Eucalyptus obliqua</i> Messmate		
DBH	93 cm		
Height	15 metres		
Spread	17 metres		
Significance*	L		
Age (years)	Mature		
Condition*	G		
Assets within 4 metres	Footpath and driveway		
SULE	20-50 years		
Notes	C59		

\* Significance: N-National, S-State, R-Regional, L- Local

\* Condition: E- Excellent, G-Good, F-Fair, P-Poor, D-Dead

### Criteria for Significance:

	Historical significance		Rare/Localised distribution		Horticultural/Genetic Value		Particularly old
	Curious growth form		Outstanding size		Outstanding Example of the Species		Unique environmental contribution
	Unique Location/Context	*	Aesthetic Value		Aboriginal Culture	*	Good example of indigenous species

### Statement of Significance:

This tree is located in the front of the property. It is a large tree of good health, form and structure. It has several leaders but the unions were sound. It contributes directly to the streetscape in Ferguson Street and is worthy of inclusion within the Significant Tree Register.

### Site map:



### Photo(s):



**The Messmate**

## CITY OF WHITEHORSE- STATEMENT OF TREE SIGNIFICANCE

**Property Address: 11 Ferguson Street, Mitcham**

Melways Ref: 49 C10

Surveyed: 30<sup>th</sup> August 2006 (AJ)

Tree No.	1	2	3
Tree Name	<i>Eucalyptus elata</i> River Peppermint		
DBH	69 cm		
Height	18 metres		
Spread	13 metres		
Significance*			
Age (years)	Mature		
Condition*	G		
Assets within 4 metres	None		
SULE	20-50 years		
Notes			

\* Significance: N-National, S-State, R-Regional, L- Local

\* Condition: E- Excellent, G-Good, F-Fair, P-Poor, D-Dead

### Criteria for Significance:

	Historical significance		Rare/Localised distribution		Horticultural/Genetic Value		Particularly old
	Curious growth form		Outstanding size		Outstanding Example of the Species		Unique environmental contribution
	Unique Location/Context	*	Aesthetic Value		Aboriginal Culture		Good example of indigenous species

### Statement of Significance:

This tree is located in the rear yard. It is of good health, structure and form. It is a tall tree that is visible from the street and surrounding properties and it contributes to the amenity of the wider landscape. It is suitable for inclusion within the Significant Tree Register.  
(Note: Other tree to be assessed has been removed.)

### Site map:



### Photo(s):



**The River Peppermint**

<b>CITY OF WHITEHORSE- STATEMENT OF TREE SIGNIFICANCE</b>
---

This page is intentionally blank  
Statement of Tree Significance deleted by Amendment C 83 by Minister

## CITY OF WHITEHORSE- STATEMENT OF TREE SIGNIFICANCE

**Property Address: 16 Ferguson Street, Mitcham**

Melways Ref: 49 D10

Surveyed: 30<sup>th</sup> August 2006 (AJ)

Tree No.	1	2	3
Tree Name	<i>Eucalyptus macrorhyncha</i> Red Stringybark		
DBH	65+45 cm		
Height	15 metres		
Spread	14 metres		
Significance*	L		
Age (years)	Mature		
Condition*	G		
Assets within 4 metres	None		
SULE	20-50 years		
Notes			

\* Significance: N-National, S-State, R-Regional, L- Local

\* Condition: E- Excellent, G-Good, F-Fair, P-Poor, D-Dead

### Criteria for Significance:

	Historical significance		Rare/Localised distribution		Horticultural/Genetic Value		Particularly old
	Curious growth form		Outstanding size		Outstanding Example of the Species		Unique environmental contribution
	Unique Location/Context	*	Aesthetic Value		Aboriginal Culture	*	Good example of indigenous species

### Statement of Significance:

The Red Stringybark is located in the front of the property. It is of good health and reasonable structure and form. It has two leaders – the union was sound and presents a low risk. It has a good full canopy and it contributes to the streetscape and amenity of Ferguson Street. It is suitable for inclusion within the Significant Tree Register.

### Site map:



### Photo(s):



**The Red Stringybark**



## CITY OF WHITEHORSE- STATEMENT OF TREE SIGNIFICANCE

**Property Address: 24 Ferguson Street, Mitcham**

Melways Ref: 49 D10

Surveyed: 18<sup>th</sup> April 2006 (AJ)

<b>Tree No.</b>	<b>1</b>		
<b>Tree Name</b>	<i>Eucalyptus radiata</i> Narrow-leaved Peppermint		
<b>DBH</b>	51 cm		
<b>Height</b>	14 metres		
<b>Spread</b>	11 metres		
<b>Significance*</b>	L		
<b>Age (years)</b>	Mature		
<b>Condition*</b>	G		
<b>Assets within 4 metres</b>	None		
<b>SULE</b>	20-50 years		
<b>Notes</b>			

\* Significance: N-National, S-State, R-Regional, L- Local

\* Condition: E- Excellent, G-Good, F-Fair, P-Poor, D-Dead

### Criteria for Significance:

	Historical significance		Rare/Localised distribution		Horticultural/Genetic Value		Particularly old
	Curious growth form		Outstanding size		Outstanding Example of the Species		Unique environmental contribution
	Unique Location/Context	*	Aesthetic Value		Aboriginal Culture	*	Good example of indigenous species

### Statement of Significance:

Tree #1 is located in the rear corner of the property. It is of good health and fairly good structure. Although it has a slight lean on the main stem, the base was sound and there were no outward signs to suggest instability. It has a full canopy. This tree contributes to the overall canopy cover and amenity of the area and is worthy of inclusion within the Significant Tree Register.

### Site Map:



### Photo(s):



**Tree #1**

## CITY OF WHITEHORSE- STATEMENT OF TREE SIGNIFICANCE

**Property Address: 14 Forster Street, Mitcham**

Melways Ref: 49 C10

Surveyed 18<sup>th</sup> April 2006 (AJ)

Tree No.	1	2	3
Tree Name	<i>Quercus palustris</i> Pin oak		
DBH	51 cm		
Height	15 metres		
Spread	11 metres		
Significance*	L		
Age (years)	Mature		
Condition*	Good		
Assets within 4 metres	No		
SULE	20-50 years		
Notes			

\* Significance: N-National, S-State, R-Regional, L- Local

\* Condition: E- Excellent, G-Good, F-Fair, P-Poor, D-Dead

### Criteria for Significance:

Historical significance		Rare/Localised distribution		Horticultural/Genetic Value		Particularly old
Curious growth form		Outstanding size		Outstanding Example of the Species		Unique environmental contribution
Unique Location/Context	*	Aesthetic Value		Aboriginal Culture		Good example of indigenous species

### Statement of Significance:

This tree is located on the side boundary of the property in the front yard. It is of good health and structure. It has one main leader and the branch unions are sound. It contributes to the overall character of the area and streetscape that is also mainly planted with mature Pin Oaks. This tree is worthy of inclusion due to the good health of the tree and its contribution to the overall landscape.

### Site Map:



### Photo(s):



**The Pin Oak**

## CITY OF WHITEHORSE- STATEMENT OF TREE SIGNIFICANCE

**Property Address: 18 Forster Street, Mitcham**

Melways Ref: 49 C10

Surveyed: 30<sup>th</sup> August 2006 (AJ)

Tree No.	1	2	3
Tree Name	<i>Eucalyptus cephalocarpa</i> Silver Stringybark	<i>Eucalyptus cephalocarpa</i> Silver Stringybark	<i>Eucalyptus macrorhyncha</i> Red Stringybark
DBH	62 cm	51 cm	59 cm
Height	12 metres	14 metres	14 metres
Spread	11 metres	13 metres	13 metres
Significance*	L	L	L
Age (years)	Mature	Mature	Mature
Condition*	G	F	F\G
Assets within 4 metres	Driveway	Driveway	Driveway
SULE	20-50 years	20-50 years	20-50 years
Notes			

\* Significance: N-National, S-State, R-Regional, L- Local

\* Condition: E- Excellent, G-Good, F-Fair, P-Poor, D-Dead

### Criteria for Significance:

	Historical significance		Rare/Localised distribution		Horticultural/Genetic Value		Particularly old
	Curious growth form		Outstanding size		Outstanding Example of the Species		Unique environmental contribution
	Unique Location/Context	*	Aesthetic Value		Aboriginal Culture		Good example of indigenous species

### Statement of Significance:

These three trees are located in the front of the property. They are of good health and reasonably good structure. They are not of high individual significance but of significance as a group of trees for their contribution to the canopy cover and amenity of this area. They should be included in the Register as a group.

### Site map:



### Photo(s):



**Tree #1**



**Trees #2 & 3**

## CITY OF WHITEHORSE- STATEMENT OF TREE SIGNIFICANCE

**Property Address: 10 Fuller Street, Mitcham**

Melways Ref: 49 B11

Surveyed: 2<sup>nd</sup> May 2006 (AJ)

Tree No.	1	2	
Tree Name	<i>Eucalyptus melliodora</i> Yellow Box	<i>Eucalyptus melliodora</i> Yellow Box	
DBH	97 cm	74 cm	
Height	22 metres	20 metres	
Spread	15 metres	18 metres	
Significance*	L	L	
Age (years)	Mature	Mature	
Condition*	G	F	
Assets within 4 metres	None	None	
SULE	20-50 years	20-50 years	
Notes			

\* Significance: N-National, S-State, R-Regional, L- Local

\* Condition: E- Excellent, G-Good, F-Fair, P-Poor, D-Dead

### Criteria for Significance:

	Historical significance		Rare/Localised distribution		Horticultural/Genetic Value		Particularly old
	Curious growth form		Outstanding size		Outstanding Example of the Species		Unique environmental contribution
	Unique Location/Context	*	Aesthetic Value		Aboriginal Culture	*	Good example of indigenous species

### Statement of Significance:

Tree #1 is located in the rear corner of the property. It is of good health and structure and is quite large. It has no significant defects present. It is worthy of inclusion due to its contribution to the overall amenity and canopy cover of the area. It is a good example of its species. Tree #2 is located at the front of the property. It is of good health and fairly good structure. It has a number of stems but most forks appear sound with a minimal amount of swelling present. It is large in size and contributes to the amenity of the area. These trees provide important habitat in the area. Trees #1 & 2 are suitable for inclusion within the Register.

### Site Map:





**Photo(s):**



**Tree #1**



**Tree #2**

## CITY OF WHITEHORSE- STATEMENT OF TREE SIGNIFICANCE

**Property Address:** 4A Garden Avenue, Mitcham

Melways Ref: 49 A10

Surveyed: 19<sup>th</sup> May 2006 (AJ)

Tree No.	1	2	3
Tree Name	<i>Liriodendron tulipifera</i> Tulip tree		
DBH	66 cm		
Height	12 metres		
Spread	14 metres		
Significance*	L		
Age (years)	Mature		
Condition*	G		
Assets within 4 metres	Verandah		
SULE	20-50 years		
Notes			

\* Significance: N-National, S-State, R-Regional, L- Local

\* Condition: E- Excellent, G-Good, F-Fair, P-Poor, D-Dead

### Criteria for Significance:

	Historical significance		Rare/Localised distribution		Horticultural/Genetic Value		Particularly old
	Curious growth form	*	Outstanding size		Outstanding Example of the Species		Unique environmental contribution
	Unique Location/Context	*	Aesthetic Value		Aboriginal Culture		Good example of indigenous species

### Statement of Significance:

Tree #1 is a large Tulip tree. It is of good structure and appeared of good health (tree was assessed in autumn without foliage). It has been pruned for clearance from the dwelling but this has not detracted from the aesthetics of the tree. It is worthy of inclusion due to its size and contribution to the greater landscape. This is not a common species seen in residential gardens.

### Site Map:



### Photo(s):



**Tree #1**

## CITY OF WHITEHORSE- STATEMENT OF TREE SIGNIFICANCE

**Property Address: 11 Garden Avenue, Mitcham**

Melways Ref: 49 A10

Surveyed: 19<sup>th</sup> May 2006 (AJ)

<b>Tree No.</b>	<b>1</b>			
<b>Tree Name</b>	<i>Cedrus deodara</i> Deodar Cedar			
<b>DBH</b>	67 cm			
<b>Height</b>	15 metres			
<b>Spread</b>	11 metres			
<b>Significance*</b>	L			
<b>Age (years)</b>	Mature			
<b>Condition*</b>	G			
<b>Assets within 4 metres</b>	None			
<b>SULE</b>	20-50 years			
<b>Notes</b>				

\* Significance: N-National, S-State, R-Regional, L- Local

\* Condition: E- Excellent, G-Good, F-Fair, P-Poor, D-Dead

### Criteria for Significance:

	Historical significance		Rare/Localised distribution		Horticultural/Genetic Value		Particularly old
	Curious growth form		Outstanding size	*	Outstanding Example of the Species		Unique environmental contribution
	Unique Location/Context	*	Aesthetic Value		Aboriginal Culture		Good example of indigenous species

### Statement of Significance:

Tree #1 is a large Cedar in the front of the property. It has some limbs that overhang the dwelling however they are not posing a hazard. It is of good health and structure and is a good example of its species. It is worthy on inclusion within the Register.

### Site Map:



### Photo(s):



**Tree #1**



## CITY OF WHITEHORSE- STATEMENT OF TREE SIGNIFICANCE

**Property Address: 15 Garden Avenue, Mitcham**

Melways Ref: 49 A10

Surveyed: 6<sup>th</sup> April 2006 (AJ)

Tree No.	1	2	3
Tree Name	<i>Quercus rubra</i> Red Oak		
DBH	80 cm		
Height	13 metres		
Spread	20 metres		
Significance*	L		
Age (years)	Mature		
Condition*	Good		
Assets within 4 metres	No		
SULE	20-50 years		
Notes	Was listed in request as <i>Corymbia citriodora</i> .		

\* Significance: N-National, S-State, R-Regional, L- Local

\* Condition: E- Excellent, G-Good, F-Fair, P-Poor, D-Dead

### Criteria for Significance:

	Historical significance		Rare/Localised distribution		Horticultural/Genetic Value		Particularly old
	Curious growth form	*	Outstanding size	*	Outstanding Example of the Species		Unique environmental contribution
	Unique Location/Context	*	Aesthetic Value		Aboriginal Culture		Good example of indigenous species

### Statement of Significance:

This is a very large Red Oak. It has a very wide spreading canopy that reaches the entire width of this property and into the neighbouring property. It is of good health and sound structure and is visible from Garden Avenue. It is worthy of inclusion due to its large canopy spread and good health.

### Site Map:



### Photo(s):



**Tree #1**



**Tree #1**



## CITY OF WHITEHORSE- STATEMENT OF TREE SIGNIFICANCE

**Property Address: 34 Glenburnie Road, Mitcham**

Melways Ref: 49 A12

Surveyed: 28<sup>th</sup> August 2006 (AJ)

Tree No.	1	2	3
Tree Name	<i>Eucalyptus cephalocarpa</i> Silver Stringybark		
DBH	69 cm		
Height	14 metres		
Spread	12 metres		
Significance*	L		
Age (years)	Mature		
Condition*	G		
Assets within 4 metres	Gravel drive		
SULE	20-50 years		
Notes			

\* Significance: N-National, S-State, R-Regional, L- Local

\* Condition: E- Excellent, G-Good, F-Fair, P-Poor, D-Dead

### Criteria for Significance:

	Historical significance		Rare/Localised distribution		Horticultural/Genetic Value		Particularly old
	Curious growth form		Outstanding size		Outstanding Example of the Species		Unique environmental contribution
	Unique Location/Context	*	Aesthetic Value		Aboriginal Culture	*	Good example of indigenous species

### Statement of Significance:

This tree is located at the front of the property. It is of good health and structure and has a form typical for its species. It is a good indigenous tree and should be included on the Significant Tree Register.

### Site map:



### Photo(s):



**Tree #1**

## CITY OF WHITEHORSE- STATEMENT OF TREE SIGNIFICANCE

**Property Address: 9 Grace Court, Mitcham**

Melways Ref: 48 H11

Surveyed: 24<sup>th</sup> August 2006 (AJ)

Tree No.	1	2	3
Tree Name	<i>Eucalyptus cephalocarpa</i> Silver Stringybark		
DBH	80 cm		
Height	14 metres		
Spread	14 metres		
Significance*	L		
Age (years)	Mature		
Condition*	G		
Assets within 4 metres	Steel garage		
SULE	20-50 years		
Notes			

\* Significance: N-National, S-State, R-Regional, L- Local

\* Condition: E- Excellent, G-Good, F-Fair, P-Poor, D-Dead

### Criteria for Significance:

	Historical significance		Rare/Localised distribution		Horticultural/Genetic Value		Particularly old
	Curious growth form		Outstanding size		Outstanding Example of the Species		Unique environmental contribution
	Unique Location/Context	*	Aesthetic Value		Aboriginal Culture	*	Good example of indigenous species

### Statement of Significance:

This tree is of good health and structure. It is located next to the garage but it is an adequate distance from the house. It has a structure typical of its species and is a remnant tree. It contributes to the amenity and canopy cover of the area and should be included within the Significant Tree Register.

### Site map:



### Photo(s):



**The Silver Stringybark**

## CITY OF WHITEHORSE- STATEMENT OF TREE SIGNIFICANCE

**Property Address: 21 Halls Parade, Mitcham**

Melways Ref: 49 A12

Surveyed: 30<sup>th</sup> August 2006 (AJ)

Tree No.	1	2	3
Tree Name	<i>Quercus palustris</i> Pin Oak		
DBH	55 cm		
Height	16 metres		
Spread	11 metres		
Significance*	L		
Age (years)	Mature		
Condition*	G		
Assets within 4 metres	Gravel drive and neighbours driveway		
SULE	20-50 years		
Notes			

\* Significance: N-National, S-State, R-Regional, L- Local

\* Condition: E- Excellent, G-Good, F-Fair, P-Poor, D-Dead

### Criteria for Significance:

	Historical significance		Rare/Localised distribution		Horticultural/Genetic Value		Particularly old
	Curious growth form		Outstanding size		Outstanding Example of the Species		Unique environmental contribution
	Unique Location/Context	*	Aesthetic Value		Aboriginal Culture		Good example of indigenous species

### Statement of Significance:

This tree is located in the front of the property. It is of good health and structure and is large in size. It has a good canopy. This tree contributes to the amenity of the area and is suitable for inclusion within the Significant Tree Register.

### Site map:



### Photo(s):



**The Pin Oak**



## CITY OF WHITEHORSE- STATEMENT OF TREE SIGNIFICANCE

**Property Address: 14 Harrison Street, Mitcham**

Melways Ref: 49 A8

Survey Dates: 8<sup>th</sup> March 2006 (AJ)

Tree No.	1	2	3
Tree Name	<i>Ulmus minor</i> 'Variegata' Silver Elm		
DBH	77 cm		
Height	17 metres		
Spread	14 metres		
Significance*	L		
Age (years)	Mature		
Condition*	G		
Assets within 4 metres	No		
SULE	20-50 years		
Notes			

\* Significance: N-National, S-State, R-Regional, L- Local

\* Condition: E- Excellent, G-Good, F-Fair, P-Poor, D-Dead

### Criteria for Significance:

Historical significance	*	Rare/Localised distribution	Horticultural/Genetic Value	Particularly old
Curious growth form		Outstanding size	Outstanding Example of the Species	Unique environmental contribution
Unique Location/Context	*	Aesthetic Value	Aboriginal Culture	Good example of indigenous species

### Statement of Significance:

This large Silver Elm is of fairly good health and structure. It had minor Elm Leaf Beetle damage but this is being treated by residents. It is suitable for inclusion due to its contribution to the overall amenity of the landscape. This species is seen less than the more common English Elm.

### Site Map:



### Photo(s):





## CITY OF WHITEHORSE- STATEMENT OF TREE SIGNIFICANCE

**Property Address: 22 Harrison Street, Mitcham**

Melways Ref: 49 A8

Surveyed: 24<sup>th</sup> August 2006 (AJ)

Tree No.	1	2	3
Tree Name	<i>Quercus rubra</i> Red Oak		
DBH	50+80 cm		
Height	13 metres		
Spread	22 metres		
Significance*	L		
Age (years)	Mature		
Condition*	G		
Assets within 4 metres	Dwelling (unit 1)		
SULE	20-50 years		
Notes			

\* Significance: N-National, S-State, R-Regional, L- Local

\* Condition: E- Excellent, G-Good, F-Fair, P-Poor, D-Dead

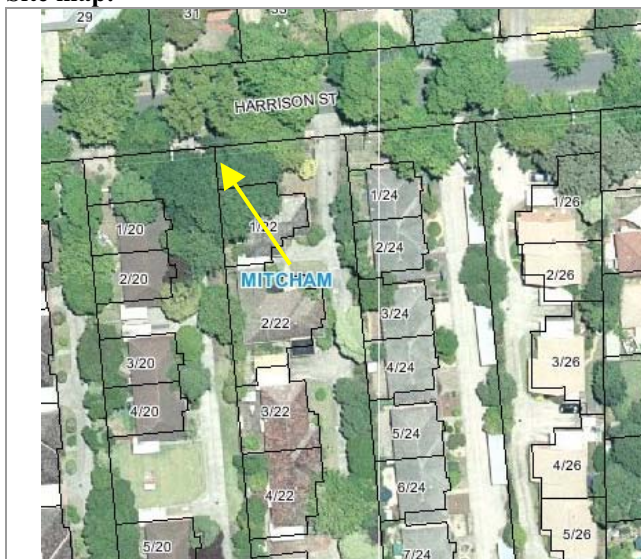
### Criteria for Significance:

	Historical significance		Rare/Localised distribution		Horticultural/Genetic Value		Particularly old
	Curious growth form	*	Outstanding size		Outstanding Example of the Species		Unique environmental contribution
	Unique Location/Context	*	Aesthetic Value		Aboriginal Culture		Good example of indigenous species

### Statement of Significance:

This tree is located in common property outside Unit 1. It is of good health and structure and has a very wide canopy spread. It is the spread of the canopy and the size of the base that makes this tree significant. It is suitable for inclusion within the Significant Tree Register.

### Site map:



### Photo(s):



**The Red Oak**

## CITY OF WHITEHORSE- STATEMENT OF TREE SIGNIFICANCE

**Property Address: 2 Haslemere Road, Mitcham**

Melways Ref: 48 J11

Surveyed: 19<sup>th</sup> April 2006 (AJ)

Tree No.	1	2	3
Tree Name	<i>Fagus sylvatica</i> f. <i>purpurea</i> Copper beech		
DBH	47 cm		
Height	13 metres		
Spread	6 metres		
Significance*	L		
Age (years)	Mature		
Condition*	G		
Assets within 4 metres	None		
SULE	20-50 years		
Notes			

\* Significance: N-National, S-State, R-Regional, L- Local

\* Condition: E- Excellent, G-Good, F-Fair, P-Poor, D-Dead

### Criteria for Significance:

Historical significance	*	Rare/Localised distribution	Horticultural/Genetic Value	Particularly old
Curious growth form		Outstanding size	Outstanding Example of the Species	Unique environmental contribution
Unique Location/Context	*	Aesthetic Value	Aboriginal Culture	Good example of indigenous species

### Statement of Significance:

This tree is located in the rear yard of the property. It is of good health and structure. It is not particularly visible from the street but contributes to the amenity of the site and is well located. It could grow well in this position for some time. Furthermore, this is not a common species seen within suburban gardens. It is worthy of inclusion with the Register.

### Site Map:



### Photo(s):



**The Copper Beech**

## CITY OF WHITEHORSE- STATEMENT OF TREE SIGNIFICANCE

**Property Address: 2 Haslemere Road, Mitcham**

Melways Ref: 48 J11

Survey Dates: March/April 2006

Tree No.	1	2	3
Tree Name	<i>Eucalyptus obliqua</i> Messmate	<i>Ulmus glabra</i> 'Lutescens' Golden Wych Elm	
DBH	86cm	53cm; 68cm; 32cm (3 stems)	
Height	20m	14m	
Spread	15m	17m	
Significance*	L	L	
Age (years)	Mature	Mature	
Condition*	F	G	
Assets within 4 metres	None	None	
SULE	20-50	10-20	
Notes	Rear garden	Front garden. Narrow forks between stems have been bolted, but really the tree needs cables installed higher in the canopy.	

\* Significance: N-National, S-State, R-Regional, L- Local

\* Condition: E- Excellent, G-Good, F-Fair, P-Poor, D-Dead

### Criteria for Significance:

Historical significance

Rare/Localised distribution

Horticultural/Genetic Value

Particularly old

Curious growth form

Outstanding size

2 Outstanding Example of the Species

Unique environmental contribution

Unique

Aesthetic Value

Aboriginal Culture

Good example of

Location/Context

1 indigenous species

### Statement of Significance:

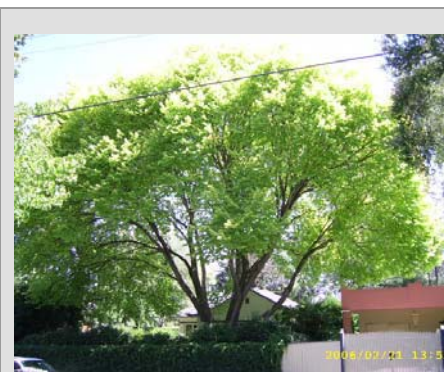
Tree #1 is a very large indigenous tree, one of the older indigenous trees in the area. It contributes significantly to amenity, landscape and environmental values.

Tree #2 is an outstanding example of the species. It has high value in the landscape and contributes to the streetscape.

### Site Map:



### Photo(s):



↑ Tree #2

← Tree #1



## CITY OF WHITEHORSE- STATEMENT OF TREE SIGNIFICANCE

**Property Address: 5 Haslemere Road, Mitcham**

Melways Ref: 48 J11

Surveyed: 19<sup>th</sup> April 2006 (AJ)

Tree No.	1	2	3
Tree Name	<i>Corymbia citriodora</i> Lemon-scented Gum		
DBH	65 cm		
Height	19 metres		
Spread	18 metres		
Significance*	L		
Age (years)	Mature		
Condition*	G		
Assets within 4 metres	Footpath		
SULE	20-50 years		
Notes			

\* Significance: N-National, S-State, R-Regional, L- Local

\* Condition: E- Excellent, G-Good, F-Fair, P-Poor, D-Dead

### Criteria for Significance:

	Historical significance		Rare/Localised distribution		Horticultural/Genetic Value		Particularly old
	Curious growth form		Outstanding size		Outstanding Example of the Species		Unique environmental contribution
	Unique Location/Context	*	Aesthetic Value		Aboriginal Culture		Good example of indigenous species

### Statement of Significance:

Tree #1 is one of the tallest trees in the street and contributes directly to the streetscape of Haslemere Road. It is of good health and structure and worthy of inclusion.

### Site Map:



### Photo(s):



**Tree #1**



## CITY OF WHITEHORSE- STATEMENT OF TREE SIGNIFICANCE

**Property Address: 8 & 10 Haslemere Road, Mitcham**

Melways Ref: 48 J11

Surveyed: 19<sup>th</sup> April 2006 (AJ)

Tree No.	1	2	3
Tree Name	<i>Eucalyptus cephalocarpa</i> Silver Stringybark		
DBH	90 cm		
Height	14 metres		
Spread	17 metres		
Significance*	L		
Age (years)	Mature		
Condition*	G		
Assets within 4 metres	None		
SULE	20-50 years		
Notes			

- Significance: N-National, S-State, R-Regional, L- Local
- Condition: E- Excellent, G-Good, F-Fair, P-Poor, D-Dead

### Criteria for Significance:

Historical significance		Rare/Localised distribution		Horticultural/Genetic Value		Particularly old
Curious growth form		Outstanding size		Outstanding Example of the Species		Unique environmental contribution
Unique Location/Context	*	Aesthetic Value		Aboriginal Culture	*	Good example of indigenous species

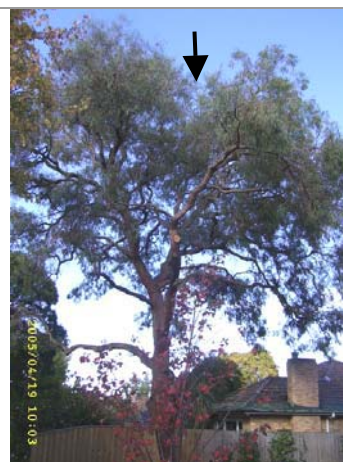
### Statement of Significance:

This tree is located on the boundary between 8 & 10 Haslemere Street. It has a large trunk diameter and is of good health. It has been well maintained and pruned. It has some decay in the main stem but the pruning works recently carried out are adequate. It is a very good example of its species and worthy of inclusion on the Significant Tree Register.

### Site Map:



### Photo(s):



**The Silver Stringybark**

## CITY OF WHITEHORSE- STATEMENT OF TREE SIGNIFICANCE

**Property Address: 1 Haven Court, Mitcham**

Melways Ref: 49 B12

Surveyed: 25<sup>th</sup> August 2006 (AJ)

Tree No.	1	2	3
Tree Name	<i>Eucalyptus mannifera</i> Red Spotted Gum		
DBH	53 cm		
Height	15 metres		
Spread	10 metres		
Significance*	L		
Age (years)	Mature		
Condition*	G		
Assets within 4 metres	Footpath		
SULE	20-50 years		
Notes			

\* Significance: N-National, S-State, R-Regional, L- Local

\* Condition: E- Excellent, G-Good, F-Fair, P-Poor, D-Dead

### Criteria for Significance:

	Historical significance		Rare/Localised distribution		Horticultural/Genetic Value		Particularly old
	Curious growth form		Outstanding size		Outstanding Example of the Species		Unique environmental contribution
	Unique Location/Context	*	Aesthetic Value		Aboriginal Culture		Good example of indigenous species

### Statement of Significance:

Tree #1 is located in the front. It is of good health and structure and has no significant defects. It contributes directly to the streetscape in Haven Court and should be included within the Significant Tree Register.

### Site map:



### Photo(s):



**The Red Spotted Gum**

## CITY OF WHITEHORSE- STATEMENT OF TREE SIGNIFICANCE

**Property Address: Unit 5 138 Heatherdale Road, Mitcham**

Melways Ref: 63 D1

Surveyed: 19<sup>th</sup> May 2006 (AJ)

Tree No.	1	2	3
Tree Name	<i>Eucalyptus mannifera</i> Red Spotted Gum		
DBH	85 cm		
Height	17 metres		
Spread	14 metres		
Significance*	L		
Age (years)	Mature		
Condition*	G		
Assets within 4 metres	None		
SULE	20-50 years		
Notes			

\* Significance: N-National, S-State, R-Regional, L- Local

\* Condition: E- Excellent, G-Good, F-Fair, P-Poor, D-Dead

### Criteria for Significance:

	Historical significance		Rare/Localised distribution		Horticultural/Genetic Value		Particularly old
	Curious growth form		Outstanding size	*	Outstanding Example of the Species		Unique environmental contribution
	Unique Location/Context	*	Aesthetic Value		Aboriginal Culture		Good example of indigenous species

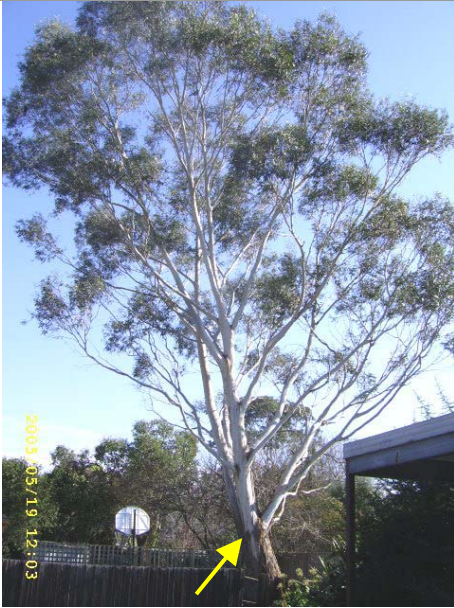
### Statement of Significance:

This tree is located in the rear yard of Unit 5. It is very large and of good health and structure. It has grown on a lean but has good buttress growth to the tension side of the tree in order to compensate for this. It has some small limbs overhanging the dwelling. It is visible from Heatherdale Road and other surrounding streets and contributes to the overall streetscape, amenity and canopy cover of the area. It is worthy of inclusion.

### Site Map:



**Photo(s):**



**Tree #1**



**Tree #1 - base**



## CITY OF WHITEHORSE- STATEMENT OF TREE SIGNIFICANCE

**Property Address: 26 Heatherdale Road, Mitcham**

Melways Ref: 49 D10

Surveyed: 11<sup>th</sup> August 2006 (AJ)

Tree No.	1	2	3
Tree Name	<i>Eucalyptus melliodora</i> Yellow Box	<i>Eucalyptus melliodora</i> Yellow Box	<i>Eucalyptus melliodora</i> Yellow Box
DBH	43 cm	65 cm	45 cm
Height	16 metres	18 metres	16 metres
Spread	13 metres	14 metres	10 metres
Significance*	L	L	L
Age (years)	Mature	Mature	Mature
Condition*	G	G	G
Assets within 4 metres	None	None	None
SULE	20-50 years	20-50 years	20-50 years
Notes			

\* Significance: N-National, S-State, R-Regional, L- Local

\* Condition: E- Excellent, G-Good, F-Fair, P-Poor, D-Dead

### Criteria for Significance:

	Historical significance		Rare/Localised distribution		Horticultural/Genetic Value		Particularly old
	Curious growth form		Outstanding size		Outstanding Example of the Species		Unique environmental contribution
	Unique Location/Context	*	Aesthetic Value		Aboriginal Culture	*	Good example of indigenous species

### Statement of Significance:

These three trees are the largest trees on this site. They are indigenous and are all of good health and structure with no significant defects present. They contribute to the overall amenity of the area. They are also important as they are indigenous and contribute to the habitat value of this area. They are suitable for inclusion within the Significant Tree Register.

### Site map:



**Photo(s):**



**Tree #1**



**Tree #2**



**Tree #3**

## CITY OF WHITEHORSE- STATEMENT OF TREE SIGNIFICANCE

**Property Address: 62 Heatherdale Road, Mitcham**

Melways Ref: 49 D11

Surveyed: 7<sup>th</sup> April 2006 (AJ)

Tree No.	1	2	3
Tree Name	<i>Eucalyptus cephalocarpa</i> Silver Stringybark		
DBH	74 cm		
Height	17 metres		
Spread	13 metres		
Significance*	L		
Age (years)	Mature		
Condition*	Fair to good		
Assets within 4 metres	No		
SULE	20-50 years		
Notes			

\* Significance: N-National, S-State, R-Regional, L- Local

\* Condition: E- Excellent, G-Good, F-Fair, P-Poor, D-Dead

### Criteria for Significance:

	Historical significance		Rare/Localised distribution		Horticultural/Genetic Value		Particularly old
	Curious growth form		Outstanding size		Outstanding Example of the Species		Unique environmental contribution
	Unique Location/Context	*	Aesthetic Value		Aboriginal Culture		Good example of indigenous species

### Statement of Significance:

This tree is located in the rear of the property. It has a good canopy and contributes to the overall amenity and canopy cover of the area. It has lost some large limbs but there appears to be minimal decay in the main stem and scaffolds. This tree is worthy of inclusion.

### Site Map:



### Photo(s):



**The Silver Stringybark**



## CITY OF WHITEHORSE- STATEMENT OF TREE SIGNIFICANCE

**Property Address: 6 Ian Crescent, Mitcham**

Melways Ref: 49 A11

Surveyed: 31<sup>st</sup> March 2006 (AJ)

Tree No.	1	2	3
Tree Name	<i>Corymbia ficifolia</i> Red Flowering Gum	<i>Corymbia maculata</i> Spotted Gum	
DBH	80 cm	48 cm	
Height	16 metres	18 metres	
Spread	14 metres	11 metres	
Significance*	L	L	
Age (years)	Mature	Mature	
Condition*	Fair to good	G	
Assets within 4 metres	Footpath	Footpath	
SULE	20-50 years	20-50 years	
Notes			

\* Significance: N-National, S-State, R-Regional, L- Local

\* Condition: E- Excellent, G-Good, F-Fair, P-Poor, D-Dead

### Criteria for Significance:

	Historical significance		Rare/Localised distribution		Horticultural/Genetic Value		Particularly old
	Curious growth form	*	Outstanding size	*	Outstanding Example of the Species		Unique environmental contribution
	Unique Location/Context	*	Aesthetic Value		Aboriginal Culture		Good example of indigenous species

### Statement of Significance:

Tree #1 is a very large Red Flowering Gum. It has a large stem diameter and dominates the streetscape. Tree #2 is a very large Spotted Gum. It is growing at the front of the property and contributes directly to the streetscape. Trees #1 & 2 are worthy of inclusion due to their contribution to the overall landscape and streetscape, and their size.

### Site Map:



**Photo(s):**



**Tree #1**



**Tree #2**

## CITY OF WHITEHORSE- STATEMENT OF TREE SIGNIFICANCE

**Property Address: 14 Ian Crescent, Mitcham**

Melways Ref: 49 A11

Surveyed: 31<sup>st</sup> March 2006 (AJ)

Tree No.	1	2	3
Tree Name	<i>Corymbia maculata</i> Spotted Gum	<i>Corymbia maculata</i> Spotted Gum	
DBH	42 cm	32 cm	
Height	15 metres	15 metres	
Spread	9 metres	8 metres	
Significance*	L	L	
Age (years)	Planted 1958	Planted 1958	
Condition*	G	G	
Assets within 4 metres	No	No	
SULE	20-50 years	20-50 years	
Notes	Northern tree	Southern tree	

\* Significance: N-National, S-State, R-Regional, L- Local

\* Condition: E- Excellent, G-Good, F-Fair, P-Poor, D-Dead

### Criteria for Significance:

	Historical significance		Rare/Localised distribution		Horticultural/Genetic Value		Particularly old
	Curious growth form		Outstanding size		Outstanding Example of the Species		Unique environmental contribution
	Unique Location/Context	*	Aesthetic Value		Aboriginal Culture		Good example of indigenous species

### Statement of Significance:

Trees #1 & 2 are of good health and structure. They contribute to the overall landscape and canopy cover of the area and are worthy of inclusion. The current owners of the property planted them in 1958.

### Site Map:



### Photo(s):



**Trees #2 & 1**



## CITY OF WHITEHORSE- STATEMENT OF TREE SIGNIFICANCE

**Property Address: 2 Ireland Avenue, Mitcham**

Melways Ref: 48 K7

Surveyed: 8<sup>th</sup> March 2006 (AJ)

Tree No.	1	2	3
Tree Name	<i>Corymbia citriodora</i> Lemon Scented Gum		
DBH	86 cm		
Height	18 metres		
Spread	19 metres		
Significance*	L		
Age (years)	Mature		
Condition*	G		
Assets within 4 metres	No		
SULE	20-50 years		
Notes			

\* Significance: N-National, S-State, R-Regional, L- Local

\* Condition: E- Excellent, G-Good, F-Fair, P-Poor, D-Dead

### Criteria for Significance:

	Historical significance		Rare/Localised distribution		Horticultural/Genetic Value		Particularly old
	Curious growth form	*	Outstanding size		Outstanding Example of the Species		Unique environmental contribution
	Unique Location/Context	*	Aesthetic Value		Aboriginal Culture		Good example of indigenous species

### Statement of Significance:

This tree is located towards the front of the property. It has a wide spreading form and some twisted limbs that increase the aesthetic value of this tree. Given its location, it contributes directly to the overall streetscape of the area. It is worthy of inclusion due to its size, form and aesthetic value.

### Site Map:



### Photo(s):



**Tree #1**

## CITY OF WHITEHORSE- STATEMENT OF TREE SIGNIFICANCE

**Property Address:** Unit 2, 1 Irvine Street, Mitcham

Melways Ref: 49 D10

Surveyed: 30<sup>th</sup> August 2006 (AJ)

Tree No.	1	2	3
Tree Name	<i>Eucalyptus melliodora</i> Yellow Box		
DBH	55+58 cm		
Height	20 metres		
Spread	15 metres		
Significance*	L		
Age (years)	Mature		
Condition*	F		
Assets within 4 metres	~2 metres to dwelling		
SULE	20-50 years		
Notes			

\* Significance: N-National, S-State, R-Regional, L- Local

\* Condition: E- Excellent, G-Good, F-Fair, P-Poor, D-Dead

### Criteria for Significance:

	Historical significance		Rare/Localised distribution		Horticultural/Genetic Value		Particularly old
	Curious growth form	*	Outstanding size		Outstanding Example of the Species		Unique environmental contribution
	Unique Location/Context	*	Aesthetic Value		Aboriginal Culture		Good example of indigenous species

### Statement of Significance:

This tree is of good health and structure. It has two main leaders and some of the canopy overhangs the dwelling. Despite this, it is a very dominant tree in the landscape and it could be managed through pruning to control any risk associated with it. It should be included in the Significant Tree Register.

### Site map:



### Photo(s):



**The Yellow Box**

## CITY OF WHITEHORSE- STATEMENT OF TREE SIGNIFICANCE

**Property Address: 3 Irvine Street, Mitcham**

Melways Ref: 49 D10

Surveyed: 18<sup>th</sup> April 2006 (AJ)

Tree No.	1	2	3
Tree Name	<i>Eucalyptus melliodora</i> Yellow Box		
DBH	52 cm		
Height	15 metres		
Spread	12 metres		
Significance*	L		
Age (years)	Mature		
Condition*	Good		
Assets within 4 metres	None		
SULE	20-50 years		
Notes			

\* Significance: N-National, S-State, R-Regional, L- Local

\* Condition: E- Excellent, G-Good, F-Fair, P-Poor, D-Dead

### Criteria for Significance:

	Historical significance		Rare/Localised distribution		Horticultural/Genetic Value		Particularly old
	Curious growth form		Outstanding size		Outstanding Example of the Species		Unique environmental contribution
	Unique Location/Context	*	Aesthetic Value		Aboriginal Culture	*	Good example of indigenous species

### Statement of Significance:

This tree is a good example of its species. It has a good full canopy and a good structure. It is located at the rear of the property with a low target frequency. It does not have any limbs overhanging the dwelling. This tree contributes to the amenity of the area and is worthy of inclusion in order to protect indigenous species of good health and structure

### Site Map:



### Photo(s):



**The Yellow Box**



## CITY OF WHITEHORSE- STATEMENT OF TREE SIGNIFICANCE

**Property Address: 11 Irvine Street, Mitcham**

Melways Ref: 49 D10

Surveyed: 12<sup>th</sup> September 2006 (AJ)

Tree No.	1	2	3
Tree Name	<i>Eucalyptus melliodora</i> Yellow Box	<i>Eucalyptus melliodora</i> Yellow Box	
DBH	61 cm	54 cm	
Height	16 metres	16 metres	
Spread	13 metres	14 metres	
Significance*	L	L	
Age (years)	Mature	Mature	
Condition*	G	G	
Assets within 4 metres	None	None	
SULE	20-50 years	20-50 years	
Notes			

\* Significance: N-National, S-State, R-Regional, L- Local

\* Condition: E- Excellent, G-Good, F-Fair, P-Poor, D-Dead

### Criteria for Significance:

	Historical significance		Rare/Localised distribution		Horticultural/Genetic Value		Particularly old
	Curious growth form		Outstanding size		Outstanding Example of the Species		Unique environmental contribution
	Unique Location/Context	*	Aesthetic Value		Aboriginal Culture	*	Good example of indigenous species

### Statement of Significance:

These trees are both located in the rear of the property. They are of reasonably good health and structure. They have some fine deadwood through the canopy but the canopies are full with good foliage density. These trees provide an important buffer zone between Irvine Street and the freeway that is being built. They should be included within the Significant Tree Register.

### Site map:



**Photo(s):**



**Tree #1**



**Tree #2**

## CITY OF WHITEHORSE- STATEMENT OF TREE SIGNIFICANCE

**Property Address: 12 Irvine Street, Mitcham**

Melways Ref: 49 D10

Surveyed: 20<sup>th</sup> November 2006 (AJ)

<b>Tree No.</b>	<b>1</b>		
<b>Tree Name</b>	<i>Eucalyptus obliqua</i> Messmate		
<b>DBH</b>	75 cm		
<b>Height</b>	15 metres		
<b>Spread</b>	12 metres		
<b>Significance*</b>	L		
<b>Age (years)</b>	Mature		
<b>Condition*</b>	Fair		
<b>Assets within 4 metres</b>	Old shed		
<b>SULE</b>	20-50 years		
<b>Notes</b>			

\* Significance: N-National, S-State, R-Regional, L- Local

\* Condition: E- Excellent, G-Good, F-Fair, P-Poor, D-Dead

### Criteria for Significance:

	Historical significance		Rare/Localised distribution		Horticultural/Genetic Value		Particularly old
	Curious growth form		Outstanding size		Outstanding Example of the Species		Unique environmental contribution
	Unique Location/Context	*	Aesthetic Value		Aboriginal Culture	*	Good example of indigenous species

### Statement of Significance:

There are a number of trees on this property. Tree #1 is a good tree and the only one suitable for inclusion on the Register. It has a good life expectancy and contributes to the amenity of the site and broader landscape.

### Site map:



### Photo(s):



**The Messmate**



## CITY OF WHITEHORSE- STATEMENT OF TREE SIGNIFICANCE

**Property Address: 8 Jacaranda Court, Mitcham**

Melways Ref: 48 H11

Surveyed: 19<sup>th</sup> April 2006 (AJ)

Tree No.	1	2	3
Tree Name	<i>Corymbia maculata</i> Spotted Gum	<i>Angophora costata</i> Smooth-barked Apple	
DBH	45 cm	46 cm	
Height	14 metres	12 metres	
Spread	10 metres	9 metres	
Significance*	L	L	
Age (years)	Mature	Mature	
Condition*	G	G	
Assets within 4 metres	Driveway	Path	
SULE	20-50 years	20-50 years	
Notes			

\* Significance: N-National, S-State, R-Regional, L- Local

\* Condition: E- Excellent, G-Good, F-Fair, P-Poor, D-Dead

### Criteria for Significance:

	Historical significance		Rare/Localised distribution		Horticultural/Genetic Value		Particularly old
	Curious growth form		Outstanding size		Outstanding Example of the Species		Unique environmental contribution
	Unique Location/Context	*	Aesthetic Value		Aboriginal Culture		Good example of indigenous species

### Statement of Significance:

Trees #1 & 2 are located in common public open space on the western side of 8 Jacaranda Court. They are both of good health and structure and contribute positively to the overall landscape and amenity of this area. They overhang the dwelling slightly however this does not pose a hazard and can be managed through pruning. These trees are suitable for inclusion due to their contribution to the overall landscape. Their significance is increased in this area, as there are not a lot of large trees present within this estate.

### Site Map:



**Photo(s):**



**Tree #1**



**Tree #2**

## CITY OF WHITEHORSE- STATEMENT OF TREE SIGNIFICANCE

**Property Address: 28 Kulnine Avenue, Mitcham**

Melways Ref: 49 D11

Surveyed: 5<sup>th</sup> April 2006 (AJ)

Tree No.	1	2	3
<b>Tree Name</b>	<i>Eucalyptus cephalocarpa</i> Silver Stringybark	<i>Eucalyptus cephalocarpa</i> Silver Stringybark	<i>Eucalyptus cephalocarpa</i> Silver Stringybark
<b>DBH</b>	56 + 33 cm	38 cm	63 cm
<b>Height</b>	15 metres	14 metres	15 metres
<b>Spread</b>	8 metres	8 metres	16 metres
<b>Significance*</b>	L	L	L
<b>Age (years)</b>	Mature	Mature	Mature
<b>Condition*</b>	Fair to good	Fair to good	Good
<b>Assets within 4 metres</b>	No	No	Footpath
<b>SULE</b>	20-50 years	20-50 years	20-50 years
<b>Notes</b>			

- Significance: N-National, S-State, R-Regional, L- Local
- Condition: E- Excellent, G-Good, F-Fair, P-Poor, D-Dead

### Criteria for Significance:

	Historical significance		Rare/Localised distribution		Horticultural/Genetic Value		Particularly old
	Curious growth form		Outstanding size		Outstanding Example of the Species		Unique environmental contribution
	Unique Location/Context	*	Aesthetic Value		Aboriginal Culture	*	Good example of indigenous species

### Statement of Significance:

Trees #1 and 2 are both located at the rear of the property. Tree #3 is located in the front of the property. They are all typical of their species with some twisted limbs and some deadwood present. Tree #3 has a fairly wide spreading canopy. These trees contribute to the overall amenity of the landscape and also provide important habitat while contributing to the overall character of the area. They are all worthy of inclusion.

### Site Map:



**Photo(s):**



**Trees #1 & 2**



**Tree #3**



## CITY OF WHITEHORSE- STATEMENT OF TREE SIGNIFICANCE

**Property Address: 1 Linlithgow Street, Mitcham**

Melways Ref: 49 B10

Surveyed: 30<sup>th</sup> March 2006 (AJ)

Tree No.	1	2	3	4
<b>Tree Name</b>	<i>Eucalyptus sideroxylon</i> Iron Bark	<i>Eucalyptus macrorhyncha</i> Red Stringybark	<i>Eucalyptus cephalocarpa</i> Silver Stringybark	<i>Eucalyptus cephalocarpa</i> x ~6 Silver Stringybark
<b>DBH</b>	51 cm	40+40 cm	30+40 cm	25-40 cm
<b>Height</b>	18 metres	16 metres	12 metres	10-14 metres
<b>Spread</b>	10 metres	10 metres	10 metres	6-8 metres
<b>Significance*</b>	L	L	L	L
<b>Age (years)</b>	Mature	Mature	Mature	Mature
<b>Condition*</b>	G	Fair to good	Fair to good	F
<b>Assets within 4 metres</b>	No	No	No	No
<b>SULE</b>	20-50 years	20-50 years	20-50 years	20-50 years
<b>Notes</b>	In rear south-east	Front south-east	Front centre	Throughout front

\* Significance: N-National, S-State, R-Regional, L- Local

\* Condition: E- Excellent, G-Good, F-Fair, P-Poor, D-Dead

### Criteria for Significance:

	Historical significance		Rare/Localised distribution		Horticultural/Genetic Value		Particularly old
	Curious growth form		Outstanding size		Outstanding Example of the Species	*	Unique environmental contribution
	Unique Location/Context	*	Aesthetic Value		Aboriginal Culture	*	Good example of indigenous species

### Statement of Significance:

Tree #1 is located at the rear. It is very tall with good structure and health. It contributes to the overall landscape and is visible from Linlithgow Street. Trees #2-4 are all located at the front of the property. There are a number of eucalypts (trees #4) in this front yard. It is their impact as a group that makes them significant contributing to the streetscape and also providing important habitat. There are minor structural and health defects associated with a number of these trees however the habitat value outweighs these. All trees assessed are worthy of inclusion.

### Site Map:



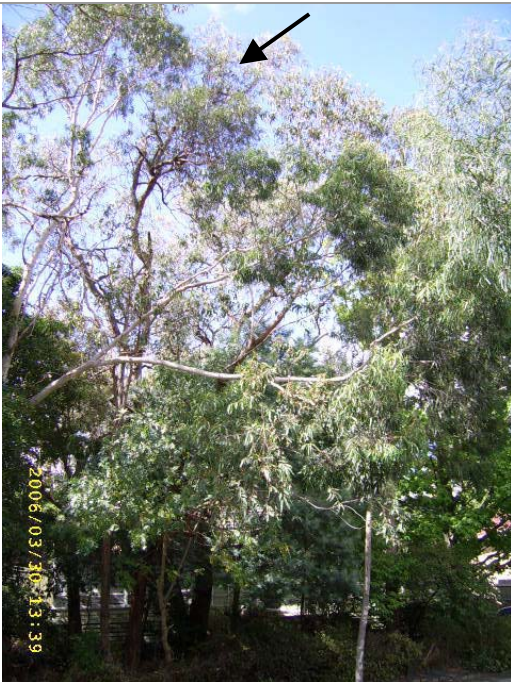
**Photo(s):**



**Tree #1**



**Tree #2**



**Tree #3 and trees #4**

## CITY OF WHITEHORSE- STATEMENT OF TREE SIGNIFICANCE

**Property Address: 4 Linlithgow Street, Mitcham**

Melways Ref: 49 B9

Surveyed: 30<sup>th</sup> March 2006 (AJ)

Tree No.	1	2	3
Tree Name	<i>Corymbia maculata</i> Spotted Gum	<i>Eucalyptus camaldulensis</i> Red Gum	
DBH	50 cm	68 cm	
Height	18 metres	16 metres	
Spread	8 metres	16 metres	
Significance*	L	L	
Age (years)	35 years	35 years	
Condition*	G	G	
Assets within 4 metres	No	Footpath	
SULE	20-50 years	20-50 years	
Notes			

\* Significance: N-National, S-State, R-Regional, L- Local

\* Condition: E- Excellent, G-Good, F-Fair, P-Poor, D-Dead

### Criteria for Significance:

	Historical significance		Rare/Localised distribution		Horticultural/Genetic Value		Particularly old
	Curious growth form		Outstanding size		Outstanding Example of the Species		Unique environmental contribution
	Unique Location/Context	*	Aesthetic Value		Aboriginal Culture	*	Good example of indigenous species

### Statement of Significance:

The current owners of this property planted these two trees approximately 35 years ago. They are of good health and structure and contribute directly to the streetscape. They are worthy of inclusion.

### Site Map:





**Photo(s):**



**Tree #1**



**Tree #2**



## CITY OF WHITEHORSE- STATEMENT OF TREE SIGNIFICANCE

**Property Address: 7 Linlithgow Street, Mitcham**

Melways Ref: 49 B10

Surveyed: 30<sup>th</sup> March 2006 (AJ)

Tree No.	1	2	5	6	7
<b>Tree Name</b>	<i>Eucalyptus obliqua</i> Messmate	<i>Eucalyptus cephalocarpa</i> Silver Stringybark	<i>Eucalyptus cephalocarpa</i> Silver Stringybark	<i>Eucalyptus cephalocarpa</i> Silver Stringybark	<i>Eucalyptus cephalocarpa</i> Silver Stringybark
<b>DBH</b>	45+28 cm	66 cm	37 cm	43 cm	42 cm
<b>Height</b>	14 metres	16 metres	8 metres	12 metres	16 metres
<b>Spread</b>	13 metres	13 metres	9 metres	7 metres	9 metres
<b>Significance*</b>	L	L	L	L	L
<b>Age (years)</b>	Mature	Mature	Mature	Mature	Mature
<b>Condition*</b>	Fair to good	G	G	Fair to good	G
<b>Assets within 4 metres</b>	Garage	Garage	Neighbours dwelling	No	No
<b>SULE</b>	10-20 years	20-50 years	20-50 years	20-50 years	20-50 years
<b>Notes</b>	Two leaders	Dominant tree in rear yard	Canopy over neighbouring dwelling		Worthy of inclusion

\* Significance: N-National, S-State, R-Regional, L- Local

\* Condition: E- Excellent, G-Good, F-Fair, P-Poor, D-Dead

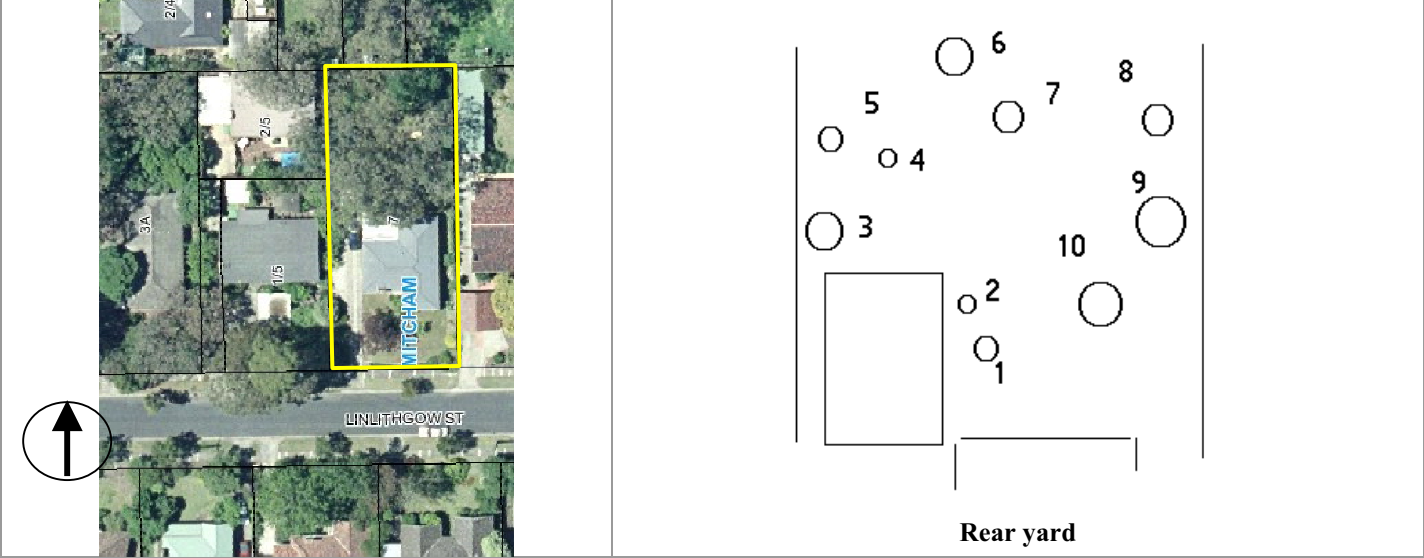
### Criteria for Significance:

	Historical significance		Rare/Localised distribution		Horticultural/Genetic Value		Particularly old
	Curious growth form		Outstanding size		Outstanding Example of the Species	*	Unique environmental contribution
	Unique Location/Context	*	Aesthetic Value		Aboriginal Culture	*	Good example of indigenous species

### Statement of Significance:

There are a number of trees present on this site. They are of varying health and structure. Together these trees are significant for their contribution to the character of the area and overall landscape. Some have such structural defects though that makes them unsuitable for inclusion. The following trees are considered suitable for inclusion: - trees #1, 2, 5, 6 & 7. The remaining trees have too high a level of structural defect or poor health and are not suitable for inclusion.

Site Map:



Photo(s):		
<p>2006/03/30 15:11</p>	<p>2006/03/30 15:21</p>	<p>2006/03/30 15:26</p>
<p>Tree #1</p>	<p>Tree #2</p>	<p>Tree #5</p>
<p>2006/03/30 15:31</p>	<p>2006/03/30 15:36</p>	
<p>Tree #6</p>	<p>Tree #7</p>	

## CITY OF WHITEHORSE- STATEMENT OF TREE SIGNIFICANCE

**Property Address: 10 Linlithgow Street, Mitcham**

Melways Ref: 49 B10

Surveyed: 30<sup>th</sup> March 2006 (AJ)

Tree No.	1	2	3
Tree Name	<i>Eucalyptus obliqua</i> Messmate	<i>Eucalyptus obliqua</i> Messmate	
DBH	40+38 cm	39 cm	
Height	16 metres	16 metres	
Spread	12 metres	9 metres	
Significance*	L	L	
Age (years)	Mature	Mature	
Condition*	Fair to good	Fair to good	
Assets within 4 metres	No	No	
SULE	20-50 years	20-50 years	
Notes			

\* Significance: N-National, S-State, R-Regional, L- Local

\* Condition: E- Excellent, G-Good, F-Fair, P-Poor, D-Dead

### Criteria for Significance:

	Historical significance		Rare/Localised distribution		Horticultural/Genetic Value		Particularly old
	Curious growth form		Outstanding size		Outstanding Example of the Species		Unique environmental contribution
	Unique Location/Context	*	Aesthetic Value		Aboriginal Culture	*	Good example of indigenous species

### Statement of Significance:

These trees are of fair to good health and structure. They are at the rear of the property but are visible from Linlithgow Street. They contribute to the overall canopy cover of the area and are important habitat trees within this area. They should be included in the Significant Tree Register.

### Site Map:



### Photo(s):



**Trees #1 & 2**

## CITY OF WHITEHORSE- STATEMENT OF TREE SIGNIFICANCE

**Property Address: 15-17 Linlithgow Street, Mitcham**

Melways Ref: 49 B10

Surveyed: 30<sup>th</sup> March 2006 (AJ)

Tree No.	1	2	
Tree Name	<i>Eucalyptus radiata</i> Narrow-leaved Peppermint	<i>Pinus radiata</i> Monterey Pine	
DBH	44 + 44 cm	127 cm	
Height	12 metres	26 metres	
Spread	12 metres	18 metres	
Significance*	L	L	
Age (years)	Mature	Mature	
Condition*	Fair to good	G	
Assets within 4 metres	Footpath	None	
SULE	20-50 years	20-50 years	
Notes			

\* Significance: N-National, S-State, R-Regional, L- Local

\* Condition: E- Excellent, G-Good, F-Fair, P-Poor, D-Dead

### Criteria for Significance:

	Historical significance		Rare/Localised distribution		Horticultural/Genetic Value		Particularly old
	Curious growth form	*	Outstanding size	*	Outstanding Example of the Species		Unique environmental contribution
	Unique Location/Context	*	Aesthetic Value		Aboriginal Culture	*	Good example of indigenous species

### Statement of Significance:

Tree #1 is located at the front of the property. It has two main leaders however the union appears sound and there was no included bark. This tree contributes directly to the streetscape and provides valuable habitat. Tree #2 is a very large Monterey Pine. It is visible from surrounding streets and contributes to the overall landscape of the area. It is significant due to its size and large stem diameter. Trees #1 and 2 are worthy of inclusion on the Register.

### Site Map:





**Photo(s):**



**Tree #1**



**Tree #2**

## CITY OF WHITEHORSE- STATEMENT OF TREE SIGNIFICANCE

**Property Address: 16 Linlithgow Street, Mitcham**

Melways Ref: 49 B10

Surveyed: 31<sup>st</sup> March 2006 (AJ)

Tree No.	1	2	3
Tree Name	<i>Eucalyptus cephalocarpa</i> Silver Stringybark		
DBH	87 cm		
Height	17 metres		
Spread	13 metres		
Significance*	L		
Age (years)	Mature		
Condition*	F		
Assets within 4 metres	Neighbours dwelling (patio)		
SULE	20-50 years		
Notes			

\* Significance: N-National, S-State, R-Regional, L- Local

\* Condition: E- Excellent, G-Good, F-Fair, P-Poor, D-Dead

### Criteria for Significance:

	Historical significance		Rare/Localised distribution		Horticultural/Genetic Value		Particularly old
	Curious growth form		Outstanding size		Outstanding Example of the Species		Unique environmental contribution
	Unique Location/Context	*	Aesthetic Value		Aboriginal Culture	*	Good example of indigenous species

### Statement of Significance:

This tree is located in the rear of the property. It has a slightly sparse canopy and one large dead limb. The base appears sound and it has a good form. It is visible from the street and contributes to the overall landscape. Despite the thinning canopy, this tree is worthy of inclusion due to its size and contribution to the overall landscape. The thinning canopy is a typical indicator of drought stress and this tree could improve with irrigation.

### Site Map:



### Photo(s):



**The Silver Stringybark**

## CITY OF WHITEHORSE- STATEMENT OF TREE SIGNIFICANCE

**Property Address: 3 Longland Road, Mitcham**

Melways Ref: 49 D9

Survey Dates: 18<sup>th</sup> April 2006 (AJ)

Tree No.	1	2	3
Tree Name	<i>Eucalyptus obliqua</i> Messmate		
DBH	85 cm		
Height	18 metres		
Spread	17 metres		
Significance*	L		
Age (years)	Mature		
Condition*	Fair to good		
Assets within 4 metres	No		
SULE	10-20 years		
Notes			

\* Significance: N-National, S-State, R-Regional, L- Local

\* Condition: E- Excellent, G-Good, F-Fair, P-Poor, D-Dead

### Criteria for Significance:

	Historical significance		Rare/Localised distribution		Horticultural/Genetic Value		Particularly old
	Curious growth form		Outstanding size		Outstanding Example of the Species		Unique environmental contribution
	Unique Location/Context	*	Aesthetic Value		Aboriginal Culture	*	Good example of indigenous species

### Statement of Significance:

The Messmate is of fairly good health and structure. It has some borer in the main stem but this has not affected the health or structure of the tree. It is visible from the main street and is suitable for inclusion due to its contribution to the overall landscape and provision of habitat.

### Site Map:



### Photo(s):



**Tree #1**

## CITY OF WHITEHORSE- STATEMENT OF TREE SIGNIFICANCE

**Property Address: Madison Gardens (refer also individual streets in this estate)**

Melways Ref: 48 J10

Surveyed: 14<sup>th</sup> September 2006 (AJ)

Tree No.	1	2	3	4
<b>Tree Name</b>	<i>Eucalyptus cephalocarpa</i> Silver Stringybark	<i>Eucalyptus goniocalyx</i> Long-leaved Box	<i>Eucalyptus obliqua</i> Messmate	<i>Eucalyptus radiata</i> Narrow-leaved Peppermint
<b>DBH</b>	~35-95 cm	~35-95 cm	~35-95 cm	~35-95 cm
<b>Height</b>	10-18 metres	10-18 metres	10-18 metres	10-18 metres
<b>Spread</b>	8-15 metres	8-15 metres	8-15 metres	8-15 metres
<b>Significance*</b>	L	L	L	L
<b>Age (years)</b>	Mature	Mature	Mature	Mature
<b>Condition*</b>	Fair to good	Fair to good	Fair to good	Fair to good
<b>Assets within 4 metres</b>	Some trees are near dwellings, roadways and footpath			
<b>SULE</b>	10-50 years	10-50 years	10-50 years	10-50 years
<b>Notes</b>				

\* Significance: N-National, S-State, R-Regional, L- Local

\* Condition: E- Excellent, G-Good, F-Fair, P-Poor, D-Dead

### Criteria for Significance:

	Historical significance		Rare/Localised distribution		Horticultural/Genetic Value		Particularly old
	Curious growth form		Outstanding size		Outstanding Example of the Species		Unique environmental contribution
	Unique Location/Context	*	Aesthetic Value		Aboriginal Culture	*	Good example of indigenous species

### Statement of Significance:

Trees on this site have been included as a group. All indigenous trees on this site contribute to the amenity of the wider landscape and provide important habitat links and canopy cover. Therefore, all indigenous trees on this site should be included within the Significant Tree Register as it is their significance as a group of trees that is important. There are over 20 indigenous trees on this site. (Several non-indigenous trees on this site have also been included in separate statements of significance.)



Site map:



Yellow areas denote approximate locations of some of the indigenous trees

**Photo(s):**



**The Silver Stringybark seen at the end of Woodlands Grove**



**A Messmate growing in Madison Boulevard (near #13)**



**A Long-leaved Box growing near 26 Madison Boulevard**



**A Long-leaved Box growing near 56 Madison Boulevard**

## CITY OF WHITEHORSE- STATEMENT OF TREE SIGNIFICANCE

**Property Address: Unit 2 – 22 Milne Street, Mitcham**

Melways Ref: 48 H8

Surveyed: 8<sup>th</sup> October 2006 (AJ)

Tree No.	1	2	3
Tree Name	<i>Quercus robur</i> English Oak		
DBH	89 cm		
Height	16 metres		
Spread	15 metres		
Significance*	L		
Age (years)	Mature		
Condition*	G		
Assets within 4 metres	Fence		
SULE	20-50 years		
Notes			

\* Significance: N-National, S-State, R-Regional, L- Local

\* Condition: E- Excellent, G-Good, F-Fair, P-Poor, D-Dead

### Criteria for Significance:

Historical significance		Rare/Localised distribution		Horticultural/Genetic Value		Particularly old
Curious growth form		Outstanding size		Outstanding Example of the Species		Unique environmental contribution
Unique Location/Context	*	Aesthetic Value		Aboriginal Culture		Good example of indigenous species

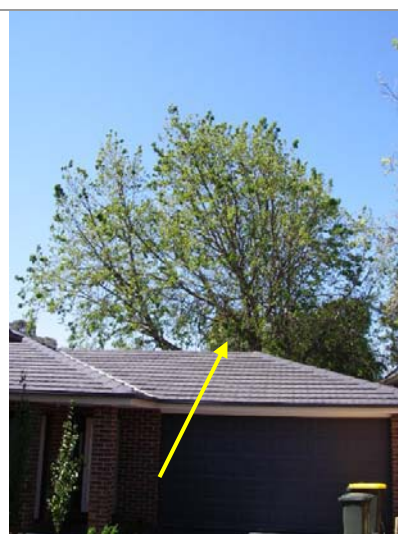
### Statement of Significance:

This site has been recently developed. The tree was retained and is now an important landscape feature both for the site and surrounding area. It is of good health and structure and suitable for inclusion within the Significant Tree Register.

### Site map:



### Photo(s):



**The English Oak**



## CITY OF WHITEHORSE- STATEMENT OF TREE SIGNIFICANCE

**Property Address: 6 Mintleaf Grove, Mitcham**

Melways Ref: 48 H11

Surveyed: 19<sup>th</sup> April 2006 (AJ)

Tree No.	1	2	3
Tree Name	<i>Angophora costata</i> Smooth-barked Apple	<i>Angophora costata</i> Smooth-barked Apple	
DBH	47 cm	84 cm	
Height	10 metres	13 metres	
Spread	10 metres	14 metres	
Significance*	L	L	
Age (years)	Mature	Mature	
Condition*	G	G	
Assets within 4 metres	Water meter	None	
SULE	20-50 years	20-50 years	
Notes	In common property	In common property	

\* Significance: N-National, S-State, R-Regional, L- Local

\* Condition: E- Excellent, G-Good, F-Fair, P-Poor, D-Dead

### Criteria for Significance:

	Historical significance		Rare/Localised distribution		Horticultural/Genetic Value		Particularly old
	Curious growth form		Outstanding size	*	Outstanding Example of the Species		Unique environmental contribution
	Unique Location/Context	*	Aesthetic Value		Aboriginal Culture		Good example of indigenous species

### Statement of Significance:

Both trees are located in common public open space to the west of 6 Mintleaf Grove. They are both of good health and structure and contribute positively to the overall landscape and character of the area. Tree #2 has two main stems but there was no included bark within the union and it appeared sound. These trees are worthy of inclusion due to their contribution to the immediate and greater landscape. Their significance is further increased, as there are not many large trees within this residential estate.

### Site Map:

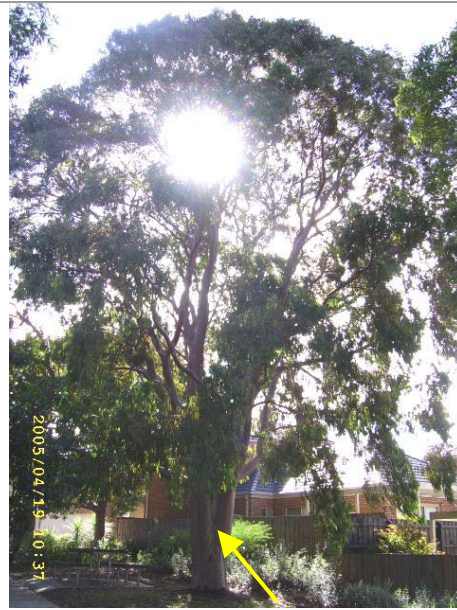




**Photo(s):**



**Tree #1**



**Tree #2**

## CITY OF WHITEHORSE- STATEMENT OF TREE SIGNIFICANCE

**Property Address: 7 Mintleaf Grove, Mitcham**

Melways Ref: 48 H11

Surveyed: 19<sup>th</sup> April 2006 (AJ)

Tree No.	1	2	3
Tree Name	<i>Angophora costata</i> Smooth-barked Apple	<i>Corymbia citriodora</i> Lemon-scented Gum	
DBH	58 cm	68 cm	
Height	14 metres	19 metres	
Spread	12 metres	12 metres	
Significance*	L	L	
Age (years)	Mature	Mature	
Condition*	G	G	
Assets within 4 metres	No	No	
SULE	20-50 years	20-50 years	
Notes			

\* Significance: N-National, S-State, R-Regional, L- Local

\* Condition: E- Excellent, G-Good, F-Fair, P-Poor, D-Dead

### Criteria for Significance:

	Historical significance		Rare/Localised distribution		Horticultural/Genetic Value		Particularly old
	Curious growth form		Outstanding size		Outstanding Example of the Species		Unique environmental contribution
	Unique Location/Context	*	Aesthetic Value		Aboriginal Culture		Good example of indigenous species

### Statement of Significance:

These trees are located in common public open space on the western side of 7 Mintleaf Grove. They are both of good health and structure and contribute positively to the overall landscape and amenity of the area. There are some limbs overhanging the dwelling but as these trees are of good health and structure this is not considered to present a high level of hazard. They could be maintained through weight reduction pruning. These trees are suitable for inclusion.

### Site Map:



**Photo(s):**



**Tree #1**



**Tree #2**

## CITY OF WHITEHORSE- STATEMENT OF TREE SIGNIFICANCE

**Property Address: 245 Mitcham Road, Mitcham**

Melways Ref: 48 J6

Surveyed: 8<sup>th</sup> March 2006 (AJ)

Tree No.	1	2	3
Tree Name	<i>Ulmus glabra</i> 'Camperdownii' Weeping Elm	<i>Corymbia citriodora</i> Lemon Scented Gum	
DBH	71 cm	50 cm	
Height	7 metres	16 metres	
Spread	8 metres	12 metres	
Significance*	L	L	
Age (years)	Mature	Mature	
Condition*	G	G	
Assets within 4 metres	No	No	
SULE	20-50 years	20-50 years	
Notes			

\* Significance: N-National, S-State, R-Regional, L- Local

\* Condition: E- Excellent, G-Good, F-Fair, P-Poor, D-Dead

### Criteria for Significance:

	Historical significance		Rare/Localised distribution		Horticultural/Genetic Value	*	Particularly old
	Curious growth form	*	Outstanding size	*	Outstanding Example of the Species		Unique environmental contribution
	Unique Location/Context	*	Aesthetic Value		Aboriginal Culture		Good example of indigenous species

### Statement of Significance:

Tree #1 is a very old Weeping Elm. It is of good health and structure. It is significant due to its large stem diameter and overall size. It should be included on the Significant Tree Register.

Tree #2 is of good health and structure. It is good for this species and is visible from surrounding streets and roads. It has a good life expectancy and is worthy of inclusion due to its size, health, form and contribution to the overall landscape.

### Site Map:





**Photo(s):**



**Tree #1**



**Tree #2**

## CITY OF WHITEHORSE- STATEMENT OF TREE SIGNIFICANCE

**Property Address:** 417 Mitcham Road, Mitcham

**Melways Ref:** 48 K10

**Surveyed:** N/A

Tree No.	1	2	3
Tree Name	<i>Corymbia citriodora</i>		
DBH			
Height	20m		
Spread	14m		
Significance*	L		
Age (years)			
Condition*			
Assets within 4 metres			
SULE			
Notes			

\* Significance: N-National, S-State, R-Regional, L- Local

\* Condition: E- Excellent, G-Good, F-Fair, P-Poor, D-Dead

### Criteria for Significance:

Historical significance		Rare/Localised distribution		Horticultural/Genetic Value		Particularly old
Curious growth form	*	Outstanding size		Outstanding Example of the Species		Unique environmental contribution
Unique Location/Context	*	Aesthetic Value		Aboriginal Culture		Good example of indigenous species

### Statement of Significance:

This tree is a large Eucalypt that dominates the property and is visible from surrounding streets contributing to the overall landscape and amenity of the area.

### Map:



### Photo(s):

## CITY OF WHITEHORSE- STATEMENT OF TREE SIGNIFICANCE

**Property Address: 514 Mitcham Road, Mitcham**

Melways Ref: 48 K11

Surveyed: 30<sup>th</sup> August 2006 (AJ)

Tree No.	1	2	3
Tree Name	<i>Quercus palustris</i> Pin Oak		
DBH	60 cm		
Height	18 metres		
Spread	13 metres		
Significance*	L		
Age (years)	Mature		
Condition*	G		
Assets within 4 metres	Neighbours drive		
SULE	20-50 years		
Notes			

\* Significance: N-National, S-State, R-Regional, L- Local

\* Condition: E- Excellent, G-Good, F-Fair, P-Poor, D-Dead

### Criteria for Significance:

	Historical significance		Rare/Localised distribution		Horticultural/Genetic Value		Particularly old
	Curious growth form	*	Outstanding size		Outstanding Example of the Species		Unique environmental contribution
	Unique Location/Context	*	Aesthetic Value		Aboriginal Culture		Good example of indigenous species

### Statement of Significance:

This tree is located in the front of the property. It is of good health, structure and form. It has a good canopy that reaches to the ground with the lower branches. It contributes to the amenity of the wider landscape and is suitable for inclusion within the Significant Tree Register.

### Site map:



### Photo(s):



**The Pin Oak**

## CITY OF WHITEHORSE- STATEMENT OF TREE SIGNIFICANCE

**Property Address: 33 Mountfield Road, Mitcham**

Melways Ref: 48 J6

Surveyed: 23<sup>rd</sup> August 2006 (AJ)

Tree No.	1	2	3
Tree Name	<i>Eucalyptus obliqua</i> Messmate		
DBH	60+45 cm		
Height	16 metres		
Spread	15 metres		
Significance*	L		
Age (years)	Mature		
Condition*	G		
Assets within 4 metres	None		
SULE	20-50 years		
Notes			

\* Significance: N-National, S-State, R-Regional, L- Local

\* Condition: E- Excellent, G-Good, F-Fair, P-Poor, D-Dead

### Criteria for Significance:

	Historical significance		Rare/Localised distribution		Horticultural/Genetic Value		Particularly old
	Curious growth form		Outstanding size		Outstanding Example of the Species		Unique environmental contribution
	Unique Location/Context	*	Aesthetic Value		Aboriginal Culture	*	Good example of indigenous species

### Statement of Significance:

This tree is of good health and structure. Submissions were made in regard to white ant activity within this tree. There are no outward signs to suggest that there is active white ant present within this tree anymore. It is a good indigenous tree that contributes to the amenity and streetscape of Mountfield Road and it should be included within the Significant Tree Register. There is also a large Spotted Gum in the rear that should be assessed if access can be arranged.

### Site map:



### Photo(s):



**The Messmate**



## CITY OF WHITEHORSE- STATEMENT OF TREE SIGNIFICANCE

**Property Address: 2 Munro Street, Mitcham**

Melways Ref: 49 B11

Surveyed: 25<sup>th</sup> August 2006 (AJ)

Tree No.	1	2	3
Tree Name	<i>Eucalyptus melliodora</i> Yellow Box		
DBH	80 cm		
Height	20 metres		
Spread	16 metres		
Significance*	L		
Age (years)	Mature		
Condition*	G		
Assets within 4 metres	None		
SULE	20-50 years		
Notes	Tree assessed from over fence		

\* Significance: N-National, S-State, R-Regional, L- Local

\* Condition: E- Excellent, G-Good, F-Fair, P-Poor, D-Dead

### Criteria for Significance:

	Historical significance		Rare/Localised distribution		Horticultural/Genetic Value		Particularly old
	Curious growth form		Outstanding size		Outstanding Example of the Species		Unique environmental contribution
	Unique Location/Context		Aesthetic Value		Aboriginal Culture	*	Good example of indigenous species

### Statement of Significance:

Tree #1 is located in the rear of the property. Assessment of this tree was done from over the fence however it appears of good health and structure and is suitable for inclusion within the Significant Tree Register. It contributes to the amenity of the area and is a good example of its species.

### Site map:



### Photo(s):



**Tree #1**

## CITY OF WHITEHORSE- STATEMENT OF TREE SIGNIFICANCE

**Property Address: 17 Munro Street, Mitcham**

Melways Ref: 49 B12

Survey Dates: 6<sup>th</sup> April 2006 (AJ)

Tree No.	1	2	3
Tree Name	<i>Eucalyptus cephalocarpa</i> Silver Stringybark		
DBH	58 cm		
Height	14 metres		
Spread	9 metres		
Significance*	L		
Age (years)	Mature		
Condition*	Good		
Assets within 4 metres	No		
SULE	20-50 years		
Notes			

\* Significance: N-National, S-State, R-Regional, L- Local

\* Condition: E- Excellent, G-Good, F-Fair, P-Poor, D-Dead

### Criteria for Significance:

	Historical significance		Rare/Localised distribution		Horticultural/Genetic Value		Particularly old
	Curious growth form		Outstanding size		Outstanding Example of the Species		Unique environmental contribution
	Unique Location/Context	*	Aesthetic Value		Aboriginal Culture		Good example of indigenous species

### Statement of Significance:

Tree #1 is of good health and structure. It contributes to the overall landscape and amenity of the area and is worthy of inclusion on the register.

### Site Map:



**Tree #1**

## CITY OF WHITEHORSE- STATEMENT OF TREE SIGNIFICANCE

**Property Address: 18 Munro Street, Mitcham**

Melways Ref: 49 B12

Survey Dates: 28<sup>th</sup> April 2006

Tree No.	3	5
Tree Name	<i>Eucalyptus sideroxylon</i> Iron Bark	<i>Eucalyptus cladocalyx</i> Sugar Gum
DBH	55 cm	56 cm
Height	12 metres	20 metres
Spread	9 metres	10 metres
Significance*	L	L
Age (years)	Mature	Mature
Condition*	G	G
Assets within 4 metres	None	None
SULE	20-50 years	20-50 years
Notes		

\* Significance: N-National, S-State, R-Regional, L- Local

\* Condition: E- Excellent, G-Good, F-Fair, P-Poor, D-Dead

### Criteria for Significance:

	Historical significance		Rare/Localised distribution		Horticultural/Genetic Value		Particularly old
	Curious growth form		Outstanding size		Outstanding Example of the Species		Unique environmental contribution
	Unique Location/Context	*	Aesthetic Value		Aboriginal Culture		Good example of indigenous species

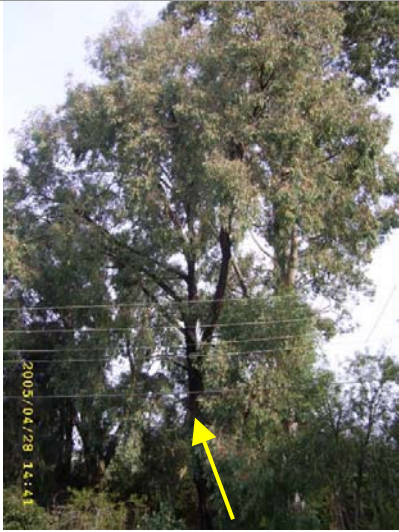
### Statement of Significance:

Tree #3 is a large Iron Bark. It is of good health and structure and suitably located. It contributes to the overall amenity of the area and is suitable for inclusion. Tree #5 is located near the street. It is of good health and structure and is suitable for inclusion within the Register.

### Site Map:



**Photo(s):**



**Tree #3**



**Tree #5**