

Moving out? Spring cleaning? Large unwanted items?

Does it work?



Donate to friends/
family or charity
shops



Sell or give
away online



Advertise through
your building

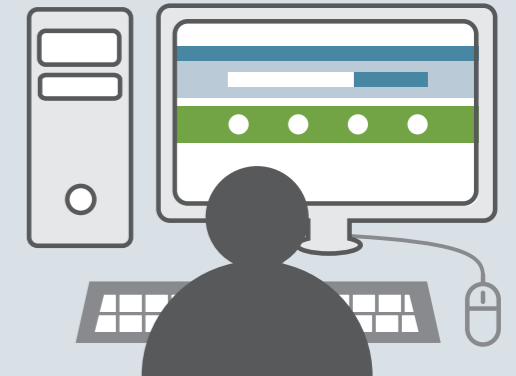
Is it broken?



Fix it at a local
repair café



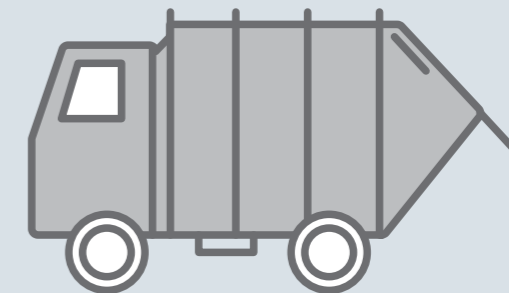
Take it to your
local transfer
station



Contact
your building
manager



Use your council hard
waste service



Arrange collection with a
private waste contractor

Placing items on the kerb without using a council hard waste collection service (if available) is illegal dumping and fines apply.

For more information: mwrrg.vic.gov.au/recycling