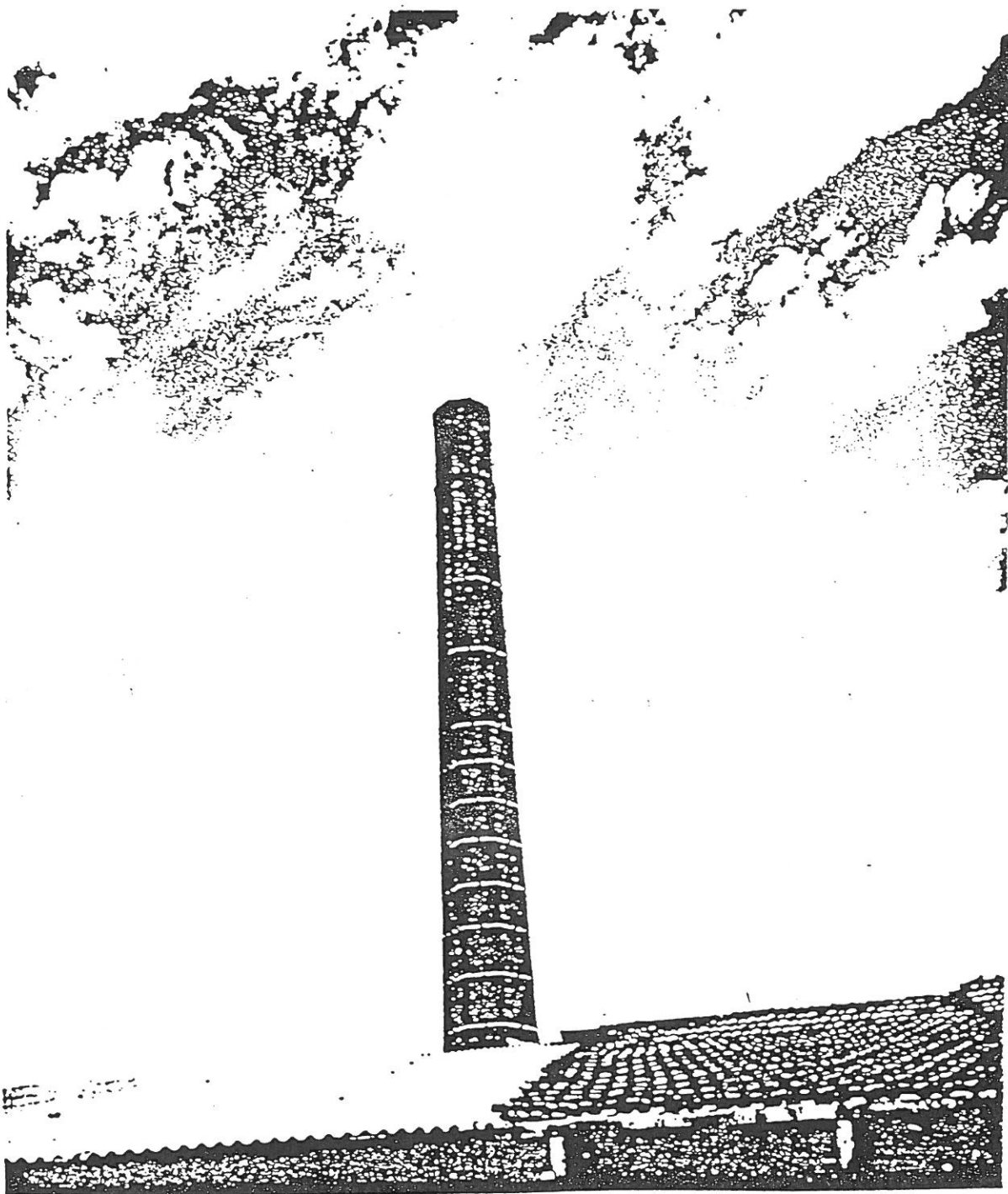

City of Nunawading Heritage Survey Project



October 1994

Context Pty Ltd

Contents

INTRODUCTION	1
PURPOSE OF THE PROJECT	1
SCOPE	1
ACKNOWLEDGEMENTS	1
METHOD	2
PRELIMINARY LIST	2
REGISTERS & OTHER SOURCES	2
FIELD SURVEY	2
HERITAGE VALUE OR SIGNIFICANCE	3
HERITAGE AREAS	4
DATABASE	4
RECOMMENDATIONS	4
RESULTS	5
PLACES IDENTIFIED	5
TYPES OF PLACES	5
STUDY PRODUCTS	5
NEXT STEPS	6
RECOMMENDATIONS	8
SOURCES CONSULTED	9
SECONDARY SOURCES	9
MAPS	9
APPENDIX 1: CULTURAL SIGNIFICANCE CRITERIA	11

Introduction

Purpose of the project

The current project has arisen from the City of Nunawading's Heritage Awareness Study, an initiative of the Council. The project was overseen by a Steering Committee comprising both council and community representatives.

The Heritage Survey Project aimed to produce a comprehensive list of places of possible heritage value as:

- a basis for setting priorities for heritage research and assessment of significance
- a mechanism for alerting Council to proposals to change or demolish potentially significant places via the planning and building permit system
- a basis for seeking funding from the National Estate Grants Program for the further development of the Heritage Awareness Study.

The Heritage Survey Project sought to prepare a list of places - buildings, structures, areas and precincts, plantings, other features - which reflect locally important aspects of Nunawading's history. It does not include an assessment of Aboriginal sites, natural areas or indigenous vegetation communities.

Scope

The Project aimed to survey the whole of the City of Nunawading, paying most attention to the older established areas and sampling the remainder of the municipality. It included both public and private property.

Acknowledgements

The consultants gratefully acknowledge the assistance provided by: members of the Heritage Awareness Study Steering Committee - Cr. Tim Shambrook, Valda Arrowsmith, Ray Wright, Kylie Hayes; Council officers Paul Ashby and Peter Chaffey; Beryl Gray from the Nunawading Historical Society; Peter Navaretti; and officers of the National Trust of Australia (Victoria); Australian Heritage Commission; Heritage Victoria.

Project team

Ms Chris Johnston (project manager); Dr Carlotta Kellaway (principal historian); Ms Vanessa Walker (principal researcher); Mrs Moira Vosper (data base).

Method

Preliminary list

The Steering Committee had prepared a preliminary list of places thought to be of possible heritage significance within the municipality. This list, and the associated map, were reviewed by the consultants and the information listed on a computer database (see below).

Registers & other sources

A number of sources which could list places of interest were checked. These included:

- Heritage register listings and nominations: Australian Heritage Commission; Historic Buildings Council (Heritage Victoria); National Trust of Australia (Victoria)
- Published local histories
- Architectural sources: the Australian Architectural Index (Dr Miles Lewis, Ed.), the Twentieth Century architectural index (compiled by Peter Navaretti), and a range of other architectural sources and journals particularly those covering the post-war period.
- Comparative studies: surveys of public buildings (schools, police stations); gardens; other place types.
- The 1947, 1965 and 1993 aerial photographs of the area.

Places identified from these sources were added to the preliminary list.

Field survey

A thorough field survey was undertaken throughout the municipality to:

- locate each place identified on the preliminary list, and
- identify other places of possible heritage value.

Due to the size of the municipality, it was not possible to travel down every street. The consultants focused on the earlier settled areas and sampled the remaining areas. The streets traversed during the survey were marked on our base maps.

As part of the field survey, the following information was recorded for each place identified:

- a unique number (inventory number)
- place name (or generic type eg. house)
- street address
- location (plotted on a base plan)
- a brief description
- a provisional assessment of its likely level of significance (see below), and
- a colour photograph was taken.

Places categorised as D2 (see below) were simply plotted on the base plan, were not photographed and have not been included on the database.

Heritage value or significance

The City of Nunawading contains many places that illuminate the history of the locality. As not all of these places will survive into the future, it is important to assess the relative merits of each place.

Heritage value or, more formally, cultural significance refers to the aesthetic, historic, scientific or social value of a place for past, present or future generations. The meanings of these terms and the specific criteria considered are included as Appendix 1.

This project provides a provisional assessment of relative heritage value, and makes recommendations about the research and analysis required to finally determine the cultural significance of each place.

Places were provisionally assessed according to their external appearance during the field survey. These assessments were based on this firm's experience in similar work for many municipalities including Brunswick, Doncaster and Templestowe, Newtown, Berwick, Flinders, Traralgon and Sale.

This project uses the following provisional categories of significance:

- A **National or State significance:** those places that are considered to contribute to the heritage of Australia, Victoria or the whole Melbourne metropolitan area.
- B **Regional significance:** those places that are considered to contribute to the heritage of Melbourne's eastern suburban region.
- C+ **High local significance:** those places that are considered to form an essential part of the heritage of the City and to play a vital role in helping people understand the City's history.
- C **Local significance:** those places that are considered to form part of the heritage of the City, representative and generally externally intact examples of building types and styles and thereby contributing to the City's historic character.
- D1 **Contributory significance 1:** those places that contribute to the heritage of the City for their social significance, having importance to the local community as landmarks or for their present or past community use; places which have significance to a wider (than local) community as important contemporary institutions or industries but which have little aesthetic or architectural significance at present; places which may be of greater significance in the future due to their present social or symbolic role.
- D2 **Contributory significance 2:** those places that, in their form, scale and character contribute to a heritage area, or that contribute to the heritage of Nunawading generally as a relatively isolated and substantially altered building or structure, representing a past land use or design style.

Heritage Areas

Based on the field survey, the consultants have defined 4 Heritage Areas where the built form and its setting (eg. street layout and plantings, vistas, open spaces) combine to create a precinct having a special character:

- A1 Blackburn Shopping Centre Area
- A2 Calcutta & Adjoining Streets Area
- A3 Victoria Avenue & Adjoining Streets Area
- A4 Bellbird Streets Area

Database

The information gathered in the field was then assembled on to a computer database using the Microsoft *Access* program and the photographs were assembled into albums.

The database is organised into the following fields:

- Inventory no. Inventory number allocated during field work
- Name Place name
- Street no. Street number or range of numbers
- Street Street name
- Locality Suburb
- Description Description of place, street, area from field work.
- Associations Family name or person associated - if known
- Designer Name of architect, designer, surveyor - if known
- Dates Key dates - dates of place - if known
- Value Provisional assessment of heritage value or cultural significance
- Source Source or sources of listing, including sources of further historical information on place
- Area Heritage Area code
- Notes Extra information worth noting
- Photo Film roll and negative number

The database also includes the following annotations under the *value* category:

- I Inaccessible: places of likely heritage significance that were not accessible at the time of the survey.

Recommendations

The final task was to prepare this report and make recommendations about the next steps Council could consider undertaking (see below).

Results

Places identified

During the field survey a total of 478 places were looked at. Of these, 221 places were provisionally ranked as of local significance or above and have been entered into the database. Eleven places of contributory significance (D1) are on the database and another 201 places of contributory significance (D2) have been mapped.

In terms of the provisional assessment of significance, these fall into the following categories.

National or state significance	2
Regional significance	19
High local significance	76
Local significance	124
Contributory significance	11

Types of places

The 221 places identified as of local significance and above, fall into two broad categories:

Individual places	217
Heritage Areas	4

Study products

The results of the study comprise:

1. This report
2. A map series at 1:5000 indicating the location of each place.
3. A print-out of the database, with indexes.
4. A series of photograph albums containing the field survey photographs.
5. Copies of heritage register and other historical research materials gathered by the consultants from sources such as the Heritage Victoria, Australian Heritage Commission, National Trust, architectural indexes. A copy of these materials will also be placed with the Nunawading and District Historical Society.

Next Steps

The Heritage Awareness Study initiated by the City has provided an excellent starting point for the recognition and protection of the municipality's heritage.

There are seven essential steps in the heritage planning process that Council has started to address through the current project. These steps provide a logical way of progressing Council's initiative:

1. Identifying Council's legislative and administrative responsibilities

The City of Nunawading is responsible under the *Planning and Environment Act 1987* to make provision to protect the heritage of its municipality through the City of Nunawading Planning Scheme.

This responsibility also falls upon every municipality in Victoria, and Councils have responded in a variety of ways. New model heritage planning requirements are expected to be announced by the Minister for Planning during 1994.

2. Identifying the heritage of the municipality

This project has established that the City of Nunawading contains a diverse and interesting range of places that reflect the history of the area and create a special character that is appreciated today.

3. Assessing the significance of that heritage

The provisional assessment resulting from our field survey provides a starting point. Historical research and inspection is needed to confirm our provisional assessment. This should form the next stage (see recommendations below).

Consulting with property owners would form an important part of this step.

4. Setting heritage objectives

The objectives of planning should be consistent and compatible with legislative and administrative responsibilities and with assessed significance. Heritage objectives would need to be added to both strategic and statutory planning documents, and integrated into Council's corporate planning.

5. Identifying constraints and opportunities

Conservation of significant heritage places may not always be achievable, or even desirable. But by knowing about the significance of heritage places, these values can be recognised in the decision-making process. In many instances, this will result in a better outcome and one that enables important parts of the City's heritage to be kept for future generations to appreciate.

Consulting with the community would form an important part of this step.

Developing suitable mechanisms to encourage and assist private owners to conserve heritage places will require a careful analysis of their needs, the resources available to Council and the opportunities and constraints created by the current pattern of land uses and zonings.

6. Developing a heritage plan

A heritage plan should draw together information of the heritage of the locality, the heritage objectives, the opportunities and constraints and the policies, guidelines and other actions proposed by Council to address its heritage responsibilities. The scope of the plan and the types of actions it contains could be quite broad. For example, it could include history and heritage interpretation, community education, conservation programs for Council-owned properties, planning policies and guidelines, incentives and advice for property owners, and more.

7. Implementing that plan

The plan would be implemented as part of Council's normal activities. Progress on the plan could be incorporated into Council's annual report, and it could be reviewed every 5 years to ensure it continues to reflect the community's views and values.

Recommendations

Research

It is recommended that Council:

1. Proceed to establish the significance of the following categories of places via a program of historical research and inspection:

- Individual places ranked A, B and C+: (97 places), plus another 11 that were inaccessible during the present study: a total of 108
- Heritage Areas: a total of 4 areas

The result of this work would be a report documenting these places and assessing their significance. This work would be done to the standard expected by Heritage Victoria for the inclusion of a place in the City's planning scheme.

The estimated cost of such a project would be around \$14,500 and could be completed within 10 weeks.

2. There are a number of older trees and windbreak plantings throughout the municipality, some of which have been recognised in the present study as historical features but which may also be of significance as horticultural specimens. An experienced horticultural botanist should be commissioned to undertake a study of rare, large or unusual trees within the municipality. The method applied by the National Trust and Royal Melbourne Botanical Gardens in developing their Register of Significant Trees should be used.
3. Conduct a historical research training day with interested members of the Nunawading and District Historical Society to enable them to undertake some of the research required for this stage of the work. In particular, this training day would focus on using the rate books for research. If sufficient society members were interested and willing to contribute their voluntary time to undertaking rate book searches for the above places, the cost of the next stage could be reduced substantially.

Property owners

It is recommended that Council:

1. Make contact with the owners of the properties to be further investigated and encourage them to contribute any information they have about the history of their property.
2. Keep these owners informed about the progress of the next stage, and the results once it has been completed.

Building and Planning Permit System

It is recommended that Council:

1. Identify on its internal property record system both the individual places and the significant and contributory places within the Heritage Areas to ensure that Council officers are alerted to their possible heritage significance should applications for building or planning permits be received while the next stage of the work is underway.

Sources consulted

Secondary sources

- Australian Architectural Index*, Lewis, M., Univ. of Melbourne, 1990.
- Bailiere's *Victorian Gazetteer*, 1865.
- Billis and Kenyon, *Pastoral Pioneers of Port Phillip*, Melb., 1974.
- Blake, L. J. (ed), *Vision & Realisation - a centenary history of State Education in Victoria*, Education Department, Victoria, 1973.
- Block, Andrew, "Land Settlement and Economic Development in Nunawading" Univ. of Melbourne, 1987.
- Brennan, Niall, *The History of Nunawading*, Hawthorn Press, 1972.
- Fendley, G. C. *A centenary history of the Mount Pleasant Methodist Church: Forest Hill 1865-1965*.
- Howe, R., (ed), *New Houses for Old 50 years of Public Housing in Victoria 1938-1988*, Ministry of Housing & Construction, Melbourne.
- Lemon, Andrew, *The History of Box Hill*, Lothian Publishing, 1978.
- Department of Planning and Development, Research Files.
- National Trust of Australia (Vic). Research Files.
- Navaretti, P., "Architects of Melbourne and Their Work. 1900-1940," History of Architecture 3, School of Architecture, Univ. of Melbourne, 1971.
- Peterson, R., *Comparative survey of Victorian State Schools*, for Historic Buildings Branch.
- Shambrook, T. *This is Vermont*, Acacia Press, Blackburn, 1994.
- Sydenham, D., *Windows on Nunawading*. Hargreen Publishing, 1990
- Victoria and its Metropolis*, vol. 2, 1888.
- Victorian Municipal Directories*, 1875-1992.

Maps

- Country around Oakleigh including Mordialloc*, Monash, 1913 (CPO M/Def 125)
- Blackburn and Mitcham*, Old MMBW Maps Nos. 230 and 231, 1930.
- Dandenong Ranges Area*, Base Map Series, Dept. of Land and Survey. 1954-1956 (Sheets 1,2,7,8,13,14).
- Geological Survey of Victoria*, No. 40. NW, c1890.
- Melbourne Metropolitan Area*, MMBW, Dept. of Lands and Survey, State Aerial Survey Maps. Base Maps. 1: 4,800, June 1957. (Nos. 235, 253, 254, 273, 274, 275).
- Melbourne Water Supply*, W. Davidson, 1889 (CPO WS 37).
- Nunawading*, Transportation and Communication, 1921 (SLV).
- Parish of Nunawading*, Surveyor- General's Dept., 18 Jan., 1853.
- Parish of Nunawading*. Dept. of Lands and Survey, Melb., 13 May 1864.

Parish of Nunawading, Parish Plan, Dept. of Lands and Survey, Melb., 4 Aug., 1884.

Parish of Nunawading, Municipal Directory, 1892.

Parish of Nunawading, Land acquired under Closer Settlement Acts, Dept. of Lands and Survey, Melb., Jan. 1947.

Parish of Nunawading, Dept. of Lands and Survey, Melb., 1949.

Parish of Nunawading, Parish Plan., Dept. of Lands and Survey, Melb., 1970.

Railway and Roads. Victoria, Nov. 1872 (CPO RS 14B).

Ringwood, Military Survey prep. Australian Section Imperial General Staff, June 1922.

Ringwood and Scoresby, Parish of Nunawading, 1872 (CPO N79(2)).

Route for a Dray Road between Melbourne and Nunawading, 1862 (CPO GF 23).

Route to the Jordan Goldfields, 1862 (CPO GF 24).

Sale Plan. Country Lands in the Parish of Nunawading, Surveyor-General's Office, Melb., 12 Sept. 1855.

Shire of Blackburn and Mitcham, 1939 (4 sheets).

Survey for Road from Doncaster to Ringwood, Rawlinson, 1857.

Vale and Haughton Auction Plans for Blackburn, Mitcham, Vermont. (SLV).

Appendix 1: Cultural significance criteria

In judging the value of a place, there are certain questions that need to be considered such as:

- What aspects of the history of an area does the place represent?
- What are the factors which contribute to the heritage value or significance of the place?
- How does it rate against other similar places? For example - Are there other places like it? Is it the best or a representative example of its type? Is its value enhanced by being part of an area or group of sites?
- How valuable is a place to the community, or to particular parts of the community?

Criteria

Nature of significance

Our work was guided by the *Charter for the conservation of places of cultural significance* (*The Burra Charter*) a charter developed by Australia ICOMOS. The Charter defines cultural significance as being aesthetic, historic, scientific or social value for past, present or future generations.

From these four adjectives, more specific criteria can be developed to help describe why a place has significance (ie. the nature of significance). In most instances a place is significant for several reasons and all aspects of its significance need to be considered.

These terms mean:

Aesthetic: aesthetic value includes aspects of sensory perception

Historic: historic value encompasses the history of aesthetics, science and society (and therefore architecture).

Scientific: the scientific or research value of a place depends on the importance of the data involved and the extent to which a place can contribute further substantial information. (This criterion is often applied to archaeological sites)

Social: social value embraces the qualities for which a place has become a focus of spiritual, political, national or other cultural sentiment.

A place may be important because its physical form and fabric demonstrates its significance. A place may also be important because it was associated with significant events even though no physical evidence remains.

The following criteria, which expand on the four values defined above, were used by the consultants in assessing identified places and preparing the statements of significance.

History: Does the place provide physical evidence of history? For example, is the place:

- important for association with events, developments or cultural phases which have had a significant role in the human occupation and evolution of the nation, state or locality
- important in demonstrating a distinctive way of life, custom, process, land-use or function no longer practised, in danger of being lost, or of exceptional interest
- important in demonstrating the principal characteristics of the range of human activities in the Australian environment (including way of life, custom, land-use, function or technique)
- important for the way it represents aspects of national or local sentiment, values or concepts.

Design: Does the place demonstrate a particular design style or tradition in relation to the type of place? For example, is the place:

- important for its technical, creative, design or artistic excellence, innovation or achievement
- important as an illustration of the typical fashions, styles and tastes of a past period.

Aesthetic value: Does the place demonstrate qualities that are considered to contribute to contemporary aesthetic values?

Social value: Does the place have strong or special associations with a particular community or group for social, cultural, symbolic or spiritual reasons?

Research value: Does the place have the potential to provide information (through a process of research and investigation) that will contribute to a greater understanding of the history of the locality or beyond?

Association: Does the place have close or special associations with individuals or organisations and groups whose activities have been significant within the history of the locality or beyond?

Degree of significance

The degree of significance refers to its relative importance compared to other similar known examples. This project uses the following categories.

- A National or State significance: those places that are considered to contribute to the heritage of Australia, Victoria or the whole Melbourne metropolitan area.
- B Regional significance: those places that are considered to contribute to the heritage of Melbourne's eastern suburban region.
- C+ High local significance: those places that are considered to form an essential part of the heritage of the City and to play a vital role in helping people understand the City's history.
- C Local significance: those places that are considered to form part of the heritage of the City, representative and generally externally intact examples of building types and styles and thereby contributing to the City's historic character.
- D1 Contributory significance 1: those places that contribute to the heritage of the City for their social significance, having importance to the local community as landmarks or for their present or past community use; places which have significance to a wider (than local) community as important contemporary institutions or industries but which have little aesthetic or architectural significance at present; places which may be of greater significance in the future due to their present social or symbolic role.
- D2 Contributory significance 2: those places that, in their form, scale and character contribute to a heritage area, or that contribute to the heritage of Nunawading generally as a relatively isolated and substantially altered building or structure, representing a past land use or design style.

City of Nunawading Heritage Survey - Index by Street Name and Street Number

Inventory N	Name:	Street No:	Street:	Locality:	Value:	Area:
213	Blackburn Shopping Centre Area	-	-	Blackburn	B	A1
114	House	-	Abbey Walk	Vermont	C	
110	Adele	38	Adele Street	Vermont	C	
64	House	4	Albert Street	Mitcham	C+	A2
63	House	10	Albert Street	Mitcham	C+	A2
62	House	11	Albert Street	Mitcham	C+	A2
28	Cottage	2 - 3	Almondsbury Court	Blackburn	C+	
250	Bellbird Streets	-	Bellbird Streets	Blackburn	B	A4
225	Houses	5 - 7	Benares Street	Mitcham	C	A3
150	House	10	Benwerrin Drive	Burwood East	C	
151	House	12	Benwerrin Drive	Burwood East	C	
152	House	32	Benwerrin Drive	Burwood East	C	
159	Shops	-	Bermuda Drive	Blackburn South	C	
195	Opportunity Shop	8	Blackburn Road	Blackburn	C	A1
196	Rob's Cycle & Sports Shop	10 - 12	Blackburn Road	Blackburn	C	A1
197	Shop	14	Blackburn Road	Blackburn	C	A1
182	House	37	Blackburn Road	Blackburn	C+	A1
181	House	39	Blackburn Road	Blackburn	B	
128	Neighbourhood House	46	Blackburn Road	Blackburn	D1	A4
148	East Burwood Centre (Uniting Church Fmr)	-	Blackburn Road cnr Burwood Road	Burwood East	C+	
5	House	9 (rear)	Blake Street	Blackburn North	C+	
122	House	97	Boronia Road	Vermont	C	
117	House	103	Boronia Road	Vermont	I	
118	House	142	Boronia Road	Vermont	I	
298	Tree (weeping elm)	-	Boronia Road, Campbell's Croft Reserve	Vermont	C	
161	House	-	Box Avenue	Forest Hill	C	
77	House	8	Bruce Street	Mitcham	C	
230	House	36	Burnett Road	Mitcham	C	
251	Burnett Street plantings	-	Burnett Street	Mitcham	C	
149	K-Mart	-	Burwood Highway	Burwood East	C+	
158	House	91	Burwood Highway	Burwood East	C	
143	Australian Road Research Board	500	Burwood Highway	Vermont South	C	
288	Glencoe	597	Burwood Highway	Vermont South	I	

Inventory N	Name:	Street No:	Street:	Locality:	Value:	Area:
144	East Burwood Hall	Reserve	Burwood Highway	Burwood East	C	
156	RSPCA Animal Rescue Centre	3	Burwood Highway (NE cnr Middleborough Road)	Burwood East	C	
141	Burvale Hotel Motel	-	Burwood Highway and Springvale Road (cnr)	Vermont South	C	
145	Tally Ho Boys Home (Former)	-	Burwood Highway, Highbury Road	Burwood East	D1	
254	Calcutta Street Area	-	Calcutta Street	Mitcham	B	A3
97	St Luke's Church of England & McKeon Hall	-	Canterbury Road	Vermont	B	
99	Ellis Stones Plantation	-	Canterbury Road	Vermont	C	
98	Vermont Uniting Church	-	Canterbury Road	Vermont	D1	
100	Fellowship House	-	Canterbury Road	Vermont	C	
260	Wandinong Sanctuary	153 - 159	Canterbury Road	Blackburn	C+	
299	Forest Hill Chase Shopping Centre	270	Canterbury Road	Forest Hill	D1	
129	Mount Pleasant Uniting Church	333 A	Canterbury Road	Forest Hill	C+	
101	Sherbrook	551	Canterbury Road	Vermont	C+	
95	Beau View	694	Canterbury Road	Vermont	C+	
164	Horse trough	Reserve	Canterbury Road cnr Blackburn Road	Blackburn South	C	
139	Forest Hill Hall	Reserve	Canterbury Road cnr Springvale Road	Vermont	C	
146	House (former Tally Ho Church)	27	Carrington Court	Burwood East	C	
204	Blackburn Lake Sanctuary	-	Central Road	Blackburn	B	
198	House	20	Central Road	Blackburn	C+	
205	Robin Boyd House	134	Central Road	Blackburn	I	
116	House	2	Centre Road	Vermont	C	
76	House	23	Deakin Street	Mitcham	C	A2
75	Cottage	29	Deakin Street	Mitcham	C	A2
84	Schwerkolt Cottage	-	Deep Creek Road	Mitcham	B	
267	Antonio Park	-	Deep Creek Road	Mitcham	C	
57	House	45	Dunlavin Road	Nunawading	C	
50	House	62	Dunlavin Road	Nunawading	C	
65	Waratah	1	Edward Street	Mitcham	C	A2
243	Elmore Walk	-	Elmore Walk	Blackburn	C	A4
174	House	12	Fuchsia Street	Blackburn	C+	A4
176	House	20	Fuchsia Street	Blackburn	C+	A4
287	House	6	Furness Street	Blackburn	C+	A4

Inventory N	Name:	Street No:	Street:	Locality:	Value:	Area:
281	House	26	Fuscia Street	Blackburn	C+	A4
286	House	50	Gardenia Avenue	Blackburn	C+	A4
111	George Street plantings	-	George Street	Blackburn	C	
78	House	29	Gillies Street	Mitcham	C+	A2
180	Urana	2	Gordon Crescent	Blackburn	B	
201	House	10	Gordon Crescent	Blackburn	B	
200	The Grange	14	Gordon Crescent	Blackburn	B	
199	House	18	Gordon Crescent	Blackburn	B	
73	Cottage	33	Haines Street	Mitcham	C+	A2
72	Cottage	35	Haines Street	Mitcham	C+	A2
71	House	36	Haines Street	Mitcham	C+	A2
70	House	38	Haines Street	Mitcham	C+	A2
80	Harrison Street plantings	-	Harrison Street	Mitcham	C	
81	House	14	Harrison Street	Mitcham	C	
239	Channel 10 Television Studios	-	Hawthorn Road	Forest Hill	D1	
103	House	2	Hayward Court	Vermont	C+	
25	House	10	Heatherlea Court	Blackburn North	C+	
153	Ballyshanassy Reserve	-	Highbury Road	Burwood East	D1	
163	House	791	Highbury Road	Vermont South	C+	
256	Radio Australia (ABC)	-	Highbury Road (North side near Springvale Road	Burwood East	D1	
237	Burwood East Primary School	-	Highbury Road cnr Blackburn Road	Burwood East	B	
238	Former AUSSAT Receptor Dish	-	Highbury Road off Springvale Road	Burwood East	C+	
160	House	37	Holland Road	Blackburn South	C	
127	House	44	Husband Road	Forest Hill	C+	
216	Jeffrey Streetscape	-	Jeffrey Street	Blackburn	B	
261	House	17 - 21	Junction Road	Blackburn North	C+	
24	House	25	Junction Road	Blackburn North	C+	
26	House	33	Junction Road	Blackburn North	C	
271	House	32	Laburnum Street	Blackburn	C	A4
272	House	51	Laburnum Street	Blackburn	C	A4
171	House	8	Laurel Grove	Blackburn	C	A4
170	House	15	Laurel Grove	Blackburn	C+	A4
283	House	22	Laurel Grove	Blackburn	C	A4
282	House	23	Laurel Grove	Blackburn	C+	A4
166	Barbicon	64	Laurel Grove	Blackburn	C	

Inventory N	Name:	Street No:	Street:	Locality:	Value:	Area:
168	Houses	26 - 26A	Linum Street	Blackburn	C	A4
167	House	27	Linum Street	Blackburn	C	A4
85	House	5	Longland Road	Mitcham	C+	
27	House	41 - 49	Luckie Street	Nunawading	C	
107	House	57	Lucknow Street	Mitcham	C	
106	House	58 A	Lucknow Street	Mitcham	C+	
279	House	16	Main Street	Blackburn	C+	A4
280	House	18	Main Street	Blackburn	C	A4
32	House	54	Maple Street	Blackburn	C+	
214	House	5	Masons Road	Blackburn	C	
175	McCulloch Street plantings	-	McCulloch Street	Nunawading	C+	
222	House	5	Meerut Street	Mitcham	C	A3
220	House	8	Meerut Street	Mitcham	C+	A3
221	House	16	Meerut Street	Mitcham	C	A3
155	Nubrick (fmr Brick and Pipe Industries P/L)	78	Middleborough Road	Burwood East	C+	
269	Salvation Army Inala Village	220	Middleborough Road	Blackburn South	D1	
9	House	15	Middlefield Road	Blackburn North	C	
172	House	3	Minna Street	Blackburn	C	
244	Mitcham Primary School No.2904	294 - 298	Mitcham Road	Mitcham	C+	
245	House	300	Mitcham Road	Mitcham	C	
246	House	304	Mitcham Road	Mitcham	C	
248	House	381	Mitcham Road	Mitcham	C+	
87	House	439	Mitcham Road	Mitcham	C	
224	House	456	Mitcham Road	Mitcham	C+	A3
223	House	468	Mitcham Road	Mitcham	C	A3
108	House	519	Mitcham Road	Vermont	C	
86	House	520	Mitcham Road	Mitcham	C	
1	Wunderlich Site	656	Mitcham Road	Mitcham	A	
162	House	11	Mock Street	Forest Hill	C	
119	Willowbank	29	Moore Road	Vermont	B	
131	The Wattles	129	Mount Pleasant Road	Nunawading	C+	
169	House	36	Myrtle Street	Blackburn	C+	A4
215	House	29	Naughton Grove	Blackburn	C	
154	Sir Edgar and Lady Coles Kindergarten	-	Neil Court	Blackburn South	C+	
137	House	6	Ngumby Court	Vermont South	I	

Inventory N	Name:	Street No:	Street:	Locality:	Value:	Area:
252	Nicholson Street plantings	-	Nicholson Street	Nunawading	C	
51	House	58	Nicholson Street	Nunawading	C+	
102	Vermont State School No. 1022	-	Nurlendi Road	Vermont	C+	
157	Old Burwood Road alignment	-	Old Burwood Road	Burwood East	D1	
112	House	11	Penllyne Avenue	Vermont	C	
113	House	13	Penllyne Avenue	Vermont	C	
253	Pope Road plantings and gutters	-	Pope Road	Blackburn North	C	
19	House	32	Pope Road	Blackburn North	C	
18	House	34	Pope Road	Blackburn North	C	
15	House	40 +	Pope Road	Blackburn North	C	
17	House	41	Pope Road	Blackburn North	C	
14	House	42	Pope Road	Blackburn North	C+	
16	House	43	Pope Road	Blackburn North	C	
263	Quarry face	-	Quarry Road	Mitcham	C	
232	House	-	Quarry Road	Mitcham	C	
231	House	-	Quarry Road	Mitcham	C	
210	St Johns Anglican Church	-	Queen Street	Blackburn	B	
209	House	2	Queen Street	Blackburn	C+	
206	House	7	Railway Road	Blackburn	C	
192	Blue Moon Fruit Cooperative	48 - 58	Railway Road	Blackburn	C	A1
191	Shop	57 ?	Railway Road	Blackburn	C+	A1
194	Solicitors	73	Railway Road	Blackburn	C	A1
257	Shop	87	Railway Road	Blackburn	C	A1
193	Eastern Office Supplies Ltd.	93 - 97	Railway Road	Blackburn	C+	A1
135	House	41	Rooks Road	Nunawading	C	
93	The Cottage	36	Scott Street	Vermont	C+	
132	House	21	Shady Grove	Nunawading	C+	
2	House	48 - 52	Shafer Road	Blackburn North	C+	
165	House	40	Sheehans Road	Blackburn	C	
96	Labedir	8	Smithfield Walk	Vermont	C+	
185	Shop	104 - 106	South Parade	Blackburn	C+	A1
186	Shop	108 ?	South Parade	Blackburn	C	A1
188	Shops	118	South Parade	Blackburn	C	A1
189	Bank	124 - 130	South Parade	Blackburn	C	A1
190	Shop (corner)	132	South Parade	Blackburn	C	A1
3	Vitclay Pipes	41	Springfield Road	Blackburn North	A	

Inventory N	Name:	Street No:	Street:	Locality:	Value:	Area:
249	Ellis Stones Plantation	-	Springvale Road	Nunawading	C	
234	Nunawading State School No. 4190	90	Springvale Road	Nunawading	C+	
236	Shop	164	Springvale Road	Nunawading	C	
140	Bicentennial Orchard & Strathdon	449 - 465	Springvale Road	Forest Hill	B	
235	Ronald E. Gray Reserve	-	Springvale Road (off)	Nunawading	C	
217	House	-	Springvale Road Cnr Canterbury Road	Blackburn	D1	
208	House	16	Station Street	Blackburn	C	
134	Daniel Robertson's Brick Factory	58	Station Street	Nunawading	C+	
126	St Timothy's School Chapel	17	Stevens Road	Vermont	C	
23	House	59	Surrey Road	Blackburn	C	
22	House	106	Surrey Road	Blackburn	C+	
20	Surrey Kinder Haven	118	Surrey Road	Blackburn	C+	
21	House	120	Surrey Road	Blackburn	C	
123	House	6	Terrara Road	Vermont	C	
124	House	21	Terrara Road	Vermont	I	
125	Merryfield	23 - 25	Terrara Road	Vermont	I	
297	Wildwood	27	Terrara Road	Vermont	I	
296	Chaplain	95 - 99	Terrara Road	Vermont	I	
300	Tanglewood	103 - 105	Terrara Road	Vermont	I	
294	Ngumby	107 - 109	Terrara Road	Vermont	I	
264	Bellbird Dell	-	Terrara Road & George Road (off)	Vermont	C	
177	House	-	The Avenue	Blackburn	C+	A4
178	House	3 A	The Avenue	Blackburn	C+	A4
274	House	30	The Avenue	Blackburn	C+	A4
275	House	31	The Avenue	Blackburn	C	A4
276	House	33	The Avenue	Blackburn	C+	A4
179	The Avenue Uniting Church & Organ	44	The Avenue	Blackburn	C+	A4
82	Houses	11, 13, 15	Thomas Street	Mitcham	C	
83	House	32	Thomas Street	Mitcham	C+	
240	Ministry of Housing	12	Vermont Street	Blackburn South	C	
90	Streetscape	-	Vernal Avenue	Mitcham	C	
91	House	2 A	Vernal Avenue	Mitcham	C	
247	Victoria Avenue Area	-	Victoria Avenue	Mitcham	B	A2

Inventory N	Name:	Street No:	Street:	Locality:	Value:	Area:
68	House	4	Victoria Avenue	Mitcham	C	A2
67	House	6	Victoria Avenue	Mitcham	C	A2
66	House	8	Victoria Avenue	Mitcham	C	A2
173	House	32	Victoria Avenue	Mitcham	C+	
69	Night Soil Lanes	-	Victoria Avenue (off)	Mitcham	C	A2
45	Vine Street plantings	-	Vine Street	Blackburn North	C	
10	House	17	Vivian Street	Blackburn North	C+	
242	House	12	Wellington Avenue	Blackwood	C	
292	House	10	Wellington Street	Blackburn	C	
266	Community House	-	Whitehorse Road	Mitcham	C	
265	Montview Uniting Church	-	Whitehorse Road	Mitcham	C	
53	Vic Roads	-	Whitehorse Road	Nunawading	B	
48	Mural & Art Centre	-	Whitehorse Road	Nunawading	C	
47	Nunawading Civic Centre landscaping	-	Whitehorse Road	Nunawading	C+	
46	Nunawading Civic Centre	-	Whitehorse Road	Nunawading	C+	
52	Nunawading Fire Station	-	Whitehorse Road	Nunawading	D1	
54	Nunawading Uniting Church	-	Whitehorse Road	Nunawading	C+	
34	House	9	Whitehorse Road	Blackburn	C	
33	Electric Substation	42	Whitehorse Road	Nunawading	C	
37	Church of Jesus Christ of Latter Day Saints	55	Whitehorse Road	Blackburn	C	
36	Houses	56 - 58	Whitehorse Road	Blackburn	C	
39	House	59	Whitehorse Road	Blackburn	C	
44	House	65	Whitehorse Road	Blackburn	C	
40	House	73	Whitehorse Road	Blackburn	C	
38	House	78	Whitehorse Road	Blackburn	C	
41	House	88	Whitehorse Road	Blackburn	C	
42	House	102	Whitehorse Road	Blackburn	C+	
49	House	427	Whitehorse Road	Nunawading	C	
58	Allandale	431	Whitehorse Road	Nunawading	C+	
60	House	457	Whitehorse Road	Nunawading	C	A2
43	St John's Day Care Centre	459	Whitehorse Road	Nunawading	C	A2
228	Uniting Church Complex	485	Whitehorse Road	Mitcham	C+	
227	Post Office	528	Whitehorse Road	Mitcham	C	
30	Police Station and Lock Up	-	Whitehorse Road and Surrey Roads	Blackburn	C	
29	Blackburn Primary School No.2923	163 - 175	Whitehorse Road cnr Surrey Road	Blackburn	C+	

Inventory N	Name:	Street No:	Street:	Locality:	Value:	Area:
202	House	2	Wolseley Crescent	Blackburn	C	
203	House	5	Wolseley Crescent	Blackburn	B	
259	House	21	Wolseley Crescent	Blackburn	C	
138	Merchant Builders Cluster homes	-	Woodleigh Crescent (off)	Vermont South	C+	

City of Nunawading Heritage Survey - Index by Inventory Number

Inventory N	Name:	Street No:	Street:	Locality:	Value:	Area:
1	Wunderlich Site	656	Mitcham Road	Mitcham	A	
2	House	48 - 52	Shafer Road	Blackburn North	C+	
3	Vitclay Pipes	41	Springfield Road	Blackburn North	A	
5	House	9 (rear)	Blake Street	Blackburn North	C+	
9	House	15	Middlefield Road	Blackburn North	C	
10	House	17	Vivian Street	Blackburn North	C+	
14	House	42	Pope Road	Blackburn North	C+	
15	House	40 +	Pope Road	Blackburn North	C	
16	House	43	Pope Road	Blackburn North	C	
17	House	41	Pope Road	Blackburn North	C	
18	House	34	Pope Road	Blackburn North	C	
19	House	32	Pope Road	Blackburn North	C	
20	Surrey Kinder Haven	118	Surrey Road	Blackburn	C+	
21	House	120	Surrey Road	Blackburn	C	
22	House	106	Surrey Road	Blackburn	C+	
23	House	59	Surrey Road	Blackburn	C	
24	House	25	Junction Road	Blackburn North	C+	
25	House	10	Heatherlea Court	Blackburn North	C+	
26	House	33	Junction Road	Blackburn North	C	
27	House	41 - 49	Luckie Street	Nunawading	C	
28	Cottage	2 - 3	Almondsbury Court	Blackburn	C+	
29	Blackburn Primary School No.2923	163 - 175	Whitehorse Road cnr Surrey Road	Blackburn	C+	
30	Police Station and Lock Up	-	Whitehorse Road and Surrey Roads	Blackburn	C	
32	House	54	Maple Street	Blackburn	C+	
33	Electric Substation	42	Whitehorse Road	Nunawading	C	
34	House	9	Whitehorse Road	Blackburn	C	
36	Houses	56 - 58	Whitehorse Road	Blackburn	C	
37	Church of Jesus Christ of Latter Day Saints	55	Whitehorse Road	Blackburn	C	
38	House	78	Whitehorse Road	Blackburn	C	
39	House	59	Whitehorse Road	Blackburn	C	
40	House	73	Whitehorse Road	Blackburn	C	
41	House	88	Whitehorse Road	Blackburn	C	
42	House	102	Whitehorse Road	Blackburn	C+	
43	St John's Day Care Centre	459	Whitehorse Road	Nunawading	C	A2
44	House	65	Whitehorse Road	Blackburn	C	

Inventory N	Name:	Street No:	Street:	Locality:	Value:	Area:
45	Vine Street plantings	-	Vine Street	Blackburn North	C	
46	Nunawading Civic Centre	-	Whitehorse Road	Nunawading	C+	
47	Nunawading Civic Centre landscaping	-	Whitehorse Road	Nunawading	C+	
48	Mural & Art Centre	-	Whitehorse Road	Nunawading	C	
49	House	427	Whitehorse Road	Nunawading	C	
50	House	62	Dunlavin Road	Nunawading	C	
51	House	58	Nicholson Street	Nunawading	C+	
52	Nunawading Fire Station	-	Whitehorse Road	Nunawading	D1	
53	Vic Roads	-	Whitehorse Road	Nunawading	B	
54	Nunawading Uniting Church	-	Whitehorse Road	Nunawading	C+	
57	House	45	Dunlavin Road	Nunawading	C	
58	Allandale	431	Whitehorse Road	Nunawading	C+	
60	House	457	Whitehorse Road	Nunawading	C	A2
62	House	11	Albert Street	Mitcham	C+	A2
63	House	10	Albert Street	Mitcham	C+	A2
64	House	4	Albert Street	Mitcham	C+	A2
65	Waratah	1	Edward Street	Mitcham	C	A2
66	House	8	Victoria Avenue	Mitcham	C	A2
67	House	6	Victoria Avenue	Mitcham	C	A2
68	House	4	Victoria Avenue	Mitcham	C	A2
69	Night Soil Lanes	-	Victoria Avenue (off)	Mitcham	C	A2
70	House	38	Haines Street	Mitcham	C+	A2
71	House	36	Haines Street	Mitcham	C+	A2
72	Cottage	35	Haines Street	Mitcham	C+	A2
73	Cottage	33	Haines Street	Mitcham	C+	A2
75	Cottage	29	Deakin Street	Mitcham	C	A2
76	House	23	Deakin Street	Mitcham	C	A2
77	House	8	Bruce Street	Mitcham	C	
78	House	29	Gillies Street	Mitcham	C+	A2
80	Harrison Street plantings	-	Harrison Street	Mitcham	C	
81	House	14	Harrison Street	Mitcham	C	
82	Houses	11, 13, 15	Thomas Street	Mitcham	C	
83	House	32	Thomas Street	Mitcham	C+	
84	Schwerkolt Cottage	-	Deep Creek Road	Mitcham	B	
85	House	5	Longland Road	Mitcham	C+	
86	House	520	Mitcham Road	Mitcham	C	
87	House	439	Mitcham Road	Mitcham	C	

Inventory N	Name:	Street No:	Street:	Locality:	Value:	Area:
90	Streetscape	-	Vernal Avenue	Mitcham	C	
91	House	2 A	Vernal Avenue	Mitcham	C	
93	The Cottage	36	Scott Street	Vermont	C+	
95	Beau View	694	Canterbury Road	Vermont	C+	
96	Labedir	8	Smithfield Walk	Vermont	C+	
97	St Luke's Church of England & McKeon Hall	-	Canterbury Road	Vermont	B	
98	Vermont Uniting Church	-	Canterbury Road	Vermont	D1	
99	Ellis Stones Plantation	-	Canterbury Road	Vermont	C	
100	Fellowship House	-	Canterbury Road	Vermont	C	
101	Sherbrook	551	Canterbury Road	Vermont	C+	
102	Vermont State School No. 1022	-	Nurlendi Road	Vermont	C+	
103	House	2	Hayward Court	Vermont	C+	
106	House	58 A	Lucknow Street	Mitcham	C+	
107	House	57	Lucknow Street	Mitcham	C	
108	House	519	Mitcham Road	Vermont	C	
110	Adele	38	Adele Street	Vermont	C	
111	George Street plantings	-	George Street	Blackburn	C	
112	House	11	Penllyne Avenue	Vermont	C	
113	House	13	Penllyne Avenue	Vermont	C	
114	House	-	Abbey Walk	Vermont	C	
116	House	2	Centre Road	Vermont	C	
117	House	103	Boronia Road	Vermont	I	
118	House	142	Boronia Road	Vermont	I	
119	Willowbank	29	Moore Road	Vermont	B	
122	House	97	Boronia Road	Vermont	C	
123	House	6	Terrara Road	Vermont	C	
124	House	21	Terrara Road	Vermont	I	
125	Merryfield	23 - 25	Terrara Road	Vermont	I	
126	St Timothy's School Chapel	17	Stevens Road	Vermont	C	
127	House	44	Husband Road	Forest Hill	C+	
128	Neighbourhood House	46	Blackburn Road	Blackburn	D1	A4
129	Mount Pleasant Uniting Church	333 A	Canterbury Road	Forest Hill	C+	
131	The Wattles	129	Mount Pleasant Road	Nunawading	C+	
132	House	21	Shady Grove	Nunawading	C+	
134	Daniel Robertson's Brick Factory	58	Station Street	Nunawading	C+	
135	House	41	Rooks Road	Nunawading	C	

Inventory N	Name:	Street No:	Street:	Locality:	Value:	Area:
137	House	6	Ngumby Court	Vermont South	I	
138	Merchant Builders Cluster homes	-	Woodleigh Crescent (off)	Vermont South	C+	
139	Forest Hill Hall	Reserve	Canterbury Road cnr Springvale Road	Vermont	C	
140	Bicentennial Orchard & Strathdon	449 - 465	Springvale Road	Forest Hill	B	
141	Burvale Hotel Motel	-	Burwood Highway and Springvale Road (cnr)	Vermont South	C	
143	Australian Road Research Board	500	Burwood Highway	Vermont South	C	
144	East Burwood Hall	Reserve	Burwood Highway	Burwood East	C	
145	Tally Ho Boys Home (Former)	-	Burwood Highway, Highbury Road	Burwood East	D1	
146	House (former Tally Ho Church)	27	Carrington Court	Burwood East	C	
148	East Burwood Centre (Uniting Church Fmr)	-	Blackburn Road cnr Burwood Road	Burwood East	C+	
149	K-Mart	-	Burwood Highway	Burwood East	C+	
150	House	10	Benwerrin Drive	Burwood East	C	
151	House	12	Benwerrin Drive	Burwood East	C	
152	House	32	Benwerrin Drive	Burwood East	C	
153	Ballyshanassy Reserve	-	Highbury Road	Burwood East	D1	
154	Sir Edgar and Lady Coles Kindergarten	-	Neil Court	Blackburn South	C+	
155	Nubrick (fmr Brick and Pipe Industries P/L)	78	Middleborough Road	Burwood East	C+	
156	RSPCA Animal Rescue Centre	3	Burwood Highway (NE cnr Middleborough Road)	Burwood East	C	
157	Old Burwood Road alignment	-	Old Burwood Road	Burwood East	D1	
158	House	91	Burwood Highway	Burwood East	C	
159	Shops	-	Bermuda Drive	Blackburn South	C	
160	House	37	Holland Road	Blackburn South	C	
161	House	-	Box Avenue	Forest Hill	C	
162	House	11	Mock Street	Forest Hill	C	
163	House	791	Highbury Road	Vermont South	C+	
164	Horse trough	Reserve	Canterbury Road cnr Blackburn Road	Blackburn South	C	
165	House	40	Sheehans Road	Blackburn	C	
166	Barbicon	64	Laurel Grove	Blackburn	C	
167	House	27	Linum Street	Blackburn	C	A4
168	Houses	26 - 26A	Linum Street	Blackburn	C	A4
169	House	36	Myrtle Street	Blackburn	C+	A4

Inventory N	Name:	Street No:	Street:	Locality:	Value:	Area:
170	House	15	Laurel Grove	Blackburn	C+	A4
171	House	8	Laurel Grove	Blackburn	C	A4
172	House	3	Minna Street	Blackburn	C	
173	House	32	Victoria Avenue	Mitcham	C+	
174	House	12	Fuchsia Street	Blackburn	C+	A4
175	McCulloch Street plantings	-	McCulloch Street	Nunawading	C+	?
176	House	20	Fuchsia Street	Blackburn	C+	A4
177	House	-	The Avenue	Blackburn	C+	A4
178	House	3 A	The Avenue	Blackburn	C+	A4
179	The Avenue Uniting Church & Organ	44	The Avenue	Blackburn	C+	A4
180	Urana	2	Gordon Crescent	Blackburn	B	
181	House	39	Blackburn Road	Blackburn	B	
182	House	37	Blackburn Road	Blackburn	C+	A1
185	Shop	104 - 106	South Parade	Blackburn	C+	A1
186	Shop	108 ?	South Parade	Blackburn	C	A1
188	Shops	118	South Parade	Blackburn	C	A1
189	Bank	124 - 130	South Parade	Blackburn	C	A1
190	Shop (corner)	132	South Parade	Blackburn	C	A1
191	Shop	57 ?	Railway Road	Blackburn	C+	A1
192	Blue Moon Fruit Cooperative	48 - 58	Railway Road	Blackburn	C	A1
193	Eastern Office Supplies Ltd.	93 - 97	Railway Road	Blackburn	C+	A1
194	Solicitors	73	Railway Road	Blackburn	C	A1
195	Opportunity Shop	8	Blackburn Road	Blackburn	C	A1
196	Rob's Cycle & Sports Shop	10 - 12	Blackburn Road	Blackburn	C	A1
197	Shop	14	Blackburn Road	Blackburn	C	A1
X 198	House	20	Central Road	Blackburn	C+	X
199	House	18	Gordon Crescent	Blackburn	B	
200	The Grange	14	Gordon Crescent	Blackburn	B	
201	House	10	Gordon Crescent	Blackburn	B	
202	House	2	Wolseley Crescent	Blackburn	C	
203	House	5	Wolseley Crescent	Blackburn	B	
204	Blackburn Lake Sanctuary	-	Central Road	Blackburn	B	
205	Robin Boyd House	134	Central Road	Blackburn	I	
206	House	7	Railway Road	Blackburn	C	
208	House	16	Station Street	Blackburn	C	
209	House	2	Queen Street	Blackburn	C+	
210	St Johns Anglican Church	-	Queen Street	Blackburn	B	

Inventory N	Name:	Street No:	Street:	Locality:	Value:	Area:
213	Blackburn Shopping Centre Area	-	-	Blackburn	B	A1
214	House	5	Masons Road	Blackburn	C	
215	House	29	Naughton Grove	Blackburn	C	
216	Jeffrey Streetscape	-	Jeffrey Street	Blackburn	B	x
217	House	-	Springvale Road Cnr Canterbury Road	Blackburn	D1	
220	House	8	Meerut Street	Mitcham	C+	A3
221	House	16	Meerut Street	Mitcham	C	A3
222	House	5	Meerut Street	Mitcham	C	A3
223	House	468	Mitcham Road	Mitcham	C	A3
224	House	456	Mitcham Road	Mitcham	C+	A3
225	Houses	5 - 7	Benares Street	Mitcham	C	A3
227	Post Office	528	Whitehorse Road	Mitcham	C	
228	Uniting Church Complex	485	Whitehorse Road	Mitcham	C+	
230	House	36	Burnett Road	Mitcham	C	
231	House	-	Quarry Road	Mitcham	C	
232	House	-	Quarry Road	Mitcham	C	
234	Nunawading State School No. 4190	90	Springvale Road	Nunawading	C+	
235	Ronald E. Gray Reserve	-	Springvale Road (off)	Nunawading	C	
236	Shop	164	Springvale Road	Nunawading	C	
237	Burwood East Primary School	-	Highbury Road cnr Blackburn Road	Burwood East	B	
238	Former AUSSAT Receptor Dish	-	Highbury Road off Springvale Road	Burwood East	C+	
239	Channel 10 Television Studios	-	Hawthorn Road	Forest Hill	D1	
240	Ministry of Housing	12	Vermont Street	Blackburn South	C	
242	House	12	Wellington Avenue	Blackwood	C	
243	Elmore Walk	-	Elmore Walk	Blackburn	C	A4
244	Mitcham Primary School No.2904	294 - 298	Mitcham Road	Mitcham	C+	
245	House	300	Mitcham Road	Mitcham	C	
246	House	304	Mitcham Road	Mitcham	C	
247	Victoria Avenue Area	-	Victoria Avenue	Mitcham	B	A2
248	House	381	Mitcham Road	Mitcham	C+	
249	Ellis Stones Plantation	-	Springvale Road	Nunawading	C	
x 250	Bellbird Streets	-	Bellbird Streets	Blackburn	B	A4 x
251	Burnett Street plantings	-	Burnett Street	Mitcham	C	
252	Nicholson Street plantings	-	Nicholson Street	Nunawading	C	

Inventory N	Name:	Street No:	Street:	Locality:	Value:	Area:
253	Pope Road plantings and gutters	-	Pope Road	Blackburn North	C	
254	Calcutta Street Area	-	Calcutta Street	Mitcham	B	A3
256	Radio Australia (ABC)	-	Highbury Road (North side near Springvale Road	Burwood East	D1	
257	Shop	87	Railway Road	Blackburn	C	A1
259	House	21	Wolseley Crescent	Blackburn	C	
260	Wandinong Sanctuary	153 - 159	Canterbury Road	Blackburn	C+	
261	House	17 - 21	Junction Road	Blackburn North	C+	
263	Quarry face	-	Quarry Road	Mitcham	C	
264	Bellbird Dell	-	Terrara Road & George Road (off)	Vermont	C	
265	Montview Uniting Church	-	Whitehorse Road	Mitcham	C	
266	Community House	-	Whitehorse Road	Mitcham	C	
267	Antonio Park	-	Deep Creek Road	Mitcham	C	
269	Salvation Army Inala Village	220	Middleborough Road	Blackburn South	D1	
271	House	32	Laburnum Street	Blackburn	C	A4
272	House	51	Laburnum Street	Blackburn	C	A4
274	House	30	The Avenue	Blackburn	C+	A4
275	House	31	The Avenue	Blackburn	C	A4
276	House	33	The Avenue	Blackburn	C+	A4
279	House	16	Main Street	Blackburn	C+	A4
280	House	18	Main Street	Blackburn	C	A4
281	House	26	Fuscia Street	Blackburn	C+	A4
282	House	23	Laurel Grove	Blackburn	C+	A4
283	House	22	Laurel Grove	Blackburn	C	A4
286	House	50	Gardenia Avenue	Blackburn	C+	A4
287	House	6	Furness Street	Blackburn	C+	A4
288	Glencoe	597	Burwood Highway	Vermont South	I	
292	House	10	Wellington Street	Blackburn	C	
294	Ngumby	107 - 109	Terrara Road	Vermont	I	
296	Chaplain	95 - 99	Terrara Road	Vermont	I	
297	Wildwood	27	Terrara Road	Vermont	I	
298	Tree (weeping elm)	-	Boronia Road, Campbell's Croft Reserve	Vermont	C	
299	Forest Hill Chase Shopping Centre	270	Canterbury Road	Forest Hill	D1	
300	Tanglewood	103 - 105	Terrara Road	Vermont	I	