

12 July 2023

Evan Boloutis  
EB Traffic Solutions Pty Ltd  
evan@ebtraffic.com.au  
0408 395 729

Ms Adrienne Kwai  
adrienne.k@petridisarchitects.com.au

Dear Ms Kwai

## **TRAFFIC ASSESSMENT: 35 HAY STREET, BOX HILL SOUTH**

The traffic assessment has been based upon:

- Clause 52.06 of the Whitehorse Planning Scheme;
- AutoTURN computer software program for the swept path assessment (B85 car); and
- Layout plan of the proposed development at 35 Hay Street, BOX HILL SOUTH prepared by Petridis Architects, Job 22-01, Dwg TPA03, dated 10 July 2023.

The following traffic assessment examines the ability for the motorists to safely enter and exit the on-site spaces, manoeuvre on site to then exit in a forward manner.

The layout plan used as a basis for the assessment is shown **Attachment A**.

Reference to Clause 52.06-9 (design standard 1) of the Whitehorse Planning Scheme states that:

*"if the accessway serves four or more spaces or connects to a road in a Road Zone, the accessway must be designed so that cars can exit the site in a forward direction."*

The swept paths of vehicles entering and exiting the on-site car spaces have been assessed with the use of the AutoTURN computer software for a B85 motor car.

The swept path analysis undertaken on the layout plan (refer **Attachment B**), shows that the dwelling occupants are able to safely enter the on-site spaces, manoeuvre on-site to then exit from the site in a forward manner to Hay Street in accordance with the requirements of the Whitehorse Planning Scheme.

It should be noted that either corrective or reverse entry manoeuvres are required for access to the on-site spaces. The corrective manoeuvres are in accordance with AS 2890.1:2004 (Table 1.1) which specifies that the three point turn movements to enter and exit the 90 degree spaces are permitted for regular users.

Further reverse -in entry manoeuvres are shown for some spaces, which is in accordance with Clause B4.3 of AS 2890.1:2004 which states that reverse manoeuvres associated with residential parking spaces are acceptable in instances where the site geometry requires, as is the case with some of the parking spaces proposed.

Evan Boloutis  
**Director**  
**EB Traffic Solutions Pty Ltd**

B.Eng (Civil), MEng Sc (Traffic), MBA

**ATTACHMENT A**  
**CAR PARK LAYOUT**

BOX HILL  
GOLF CLUB

RESERVE

NOTE: PROVIDE 12,000 LITRE  
TANK PER BUILDING TO COLLECT  
WATER FROM ROOFS, TO BE USED  
FOR IRRIGATION, LAUNDRY AND  
TOILETS FLUSHING  
ALL LIVING AREAS AND BEDROOM  
WINDOWS TO BE DOUBLE GLAZED



LEGEND:

EXISTING NATURAL GROUND LEVELS  
PROPOSED FINISHED SURFACE LEVELS

BOLLARD LIGHTS:

EXAMPLE OF LANDSCAPE LIGHTING FOR  
THE DEVELOPMENT. BEACON LIGHTING  
SHOWN RANGE:  
<http://www.beaconlighting.com.au/>  
sited=12v-120cm-goldlight-in-stainless-steel.html



**ATTACHMENT B**

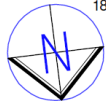
**SWEPT PATH ANALYSIS (B85 CAR)**

35 Hay Street, Box Hill South

Scale 1:125 @ A3

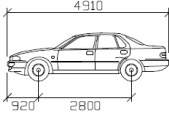
Swept Path Analysis (B85 Car)

Plan prepared by EB Traffic Solutions Pty Ltd

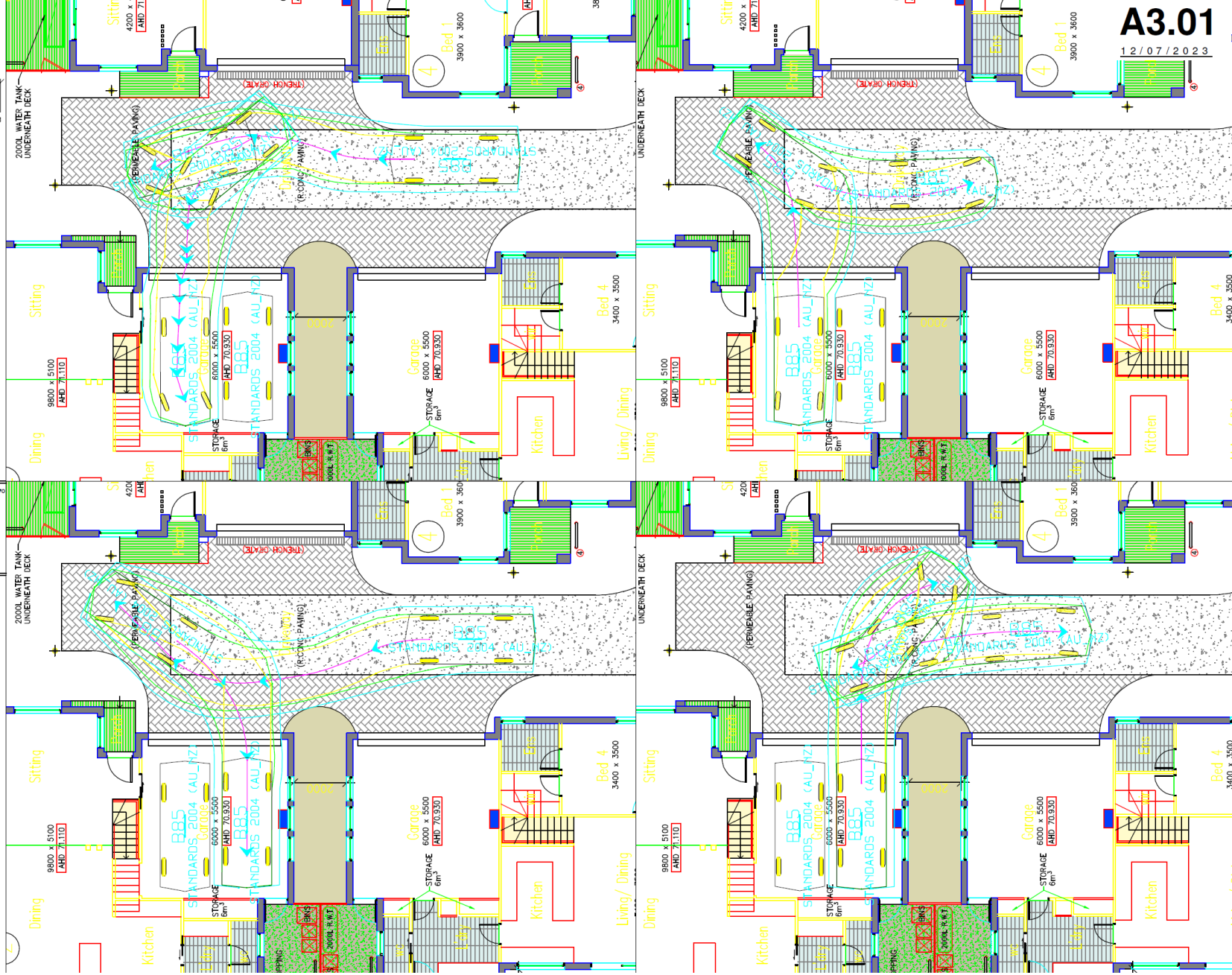


EB Traffic Solutions

Design Vehicle



B85  
Width : 1870  
Track : 1770  
Lock to Lock : 6.0  
Steering Angle : 34.1





35 Hay Street, Box Hill South

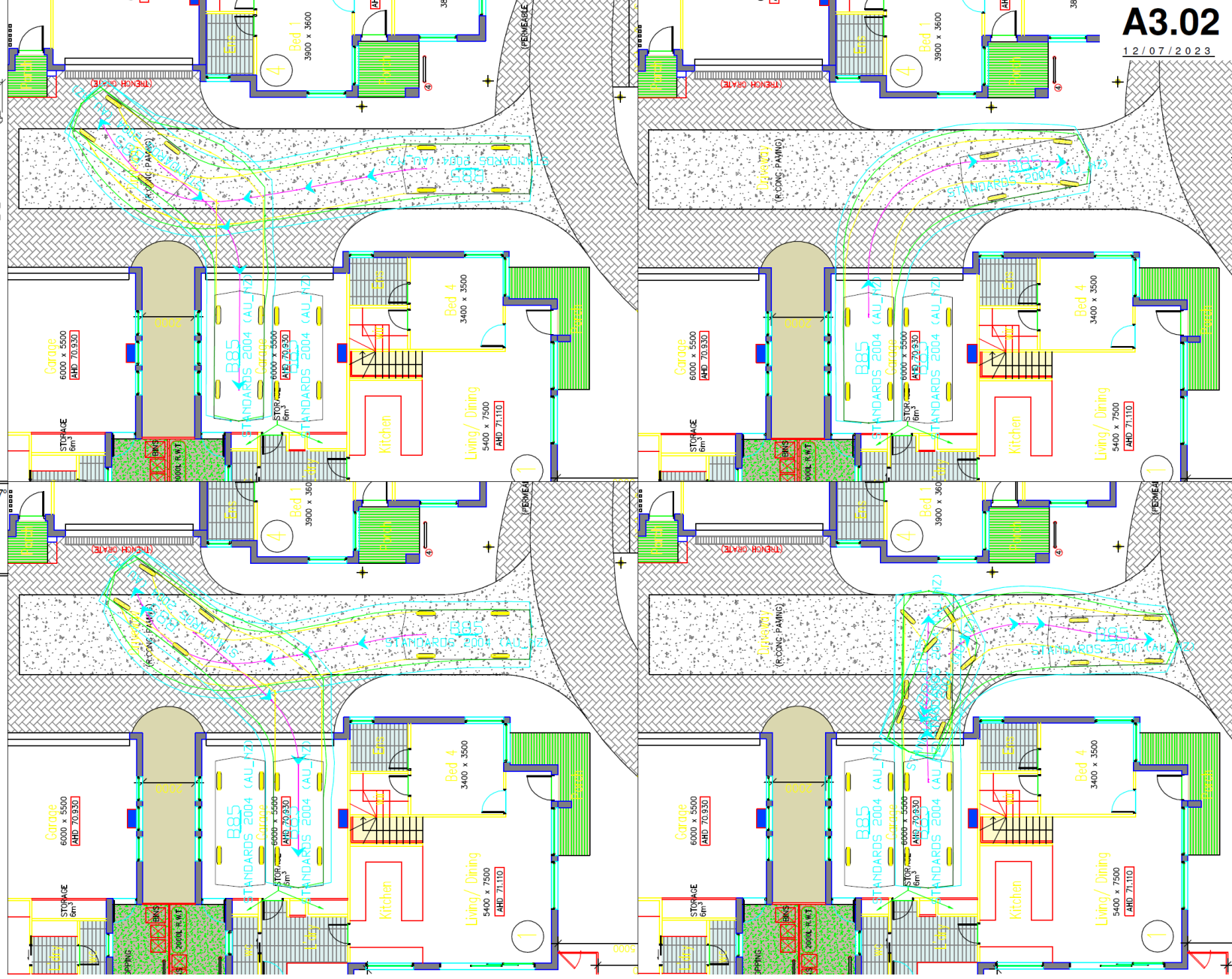
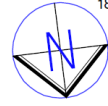
Scale 1:125 @ A3

Swept Path Analysis (B85 Car)

Plan prepared by EB Traffic Solutions Pty Ltd

**EB Traffic Solutions**  
Design Vehicle

B85 mm  
Width : 1870  
Track : 1770  
Lock to Lock : 6.0  
Steering Angle : 34.1



**EB Traffic Solutions**

**Design Vehicle**

B85 mm

Width : 1870

Track : 1770

Lock to Lock : 6.0

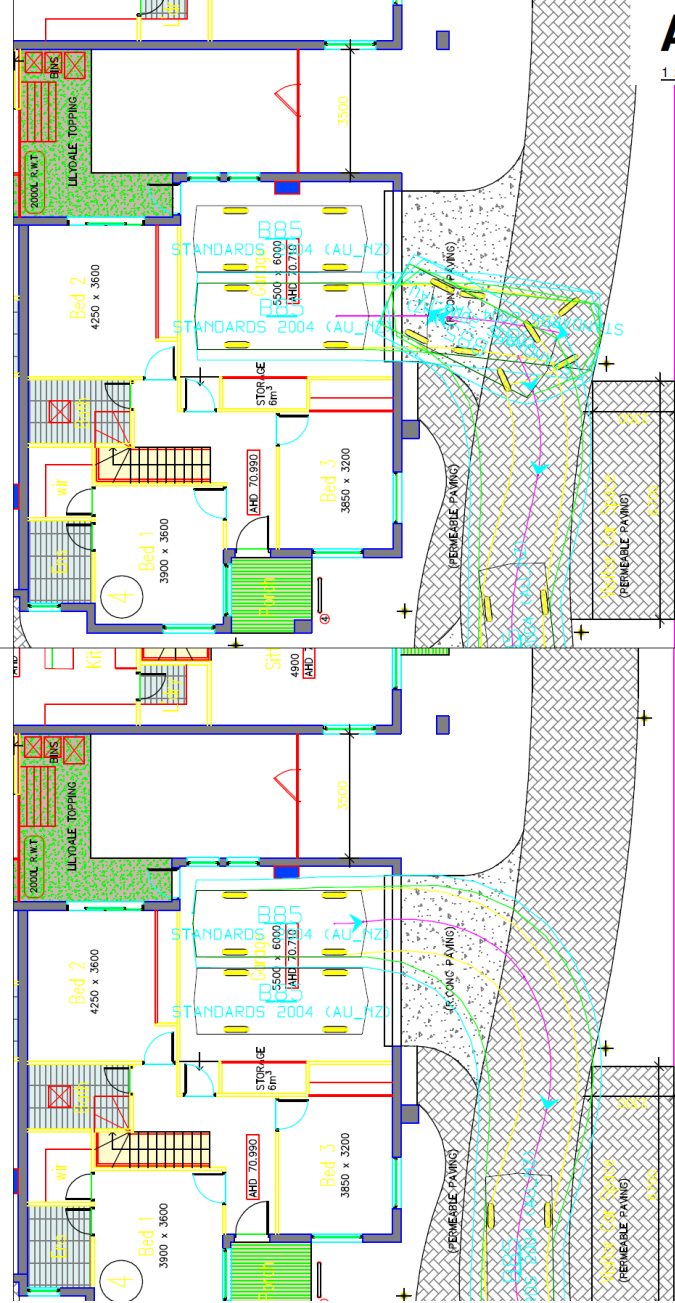
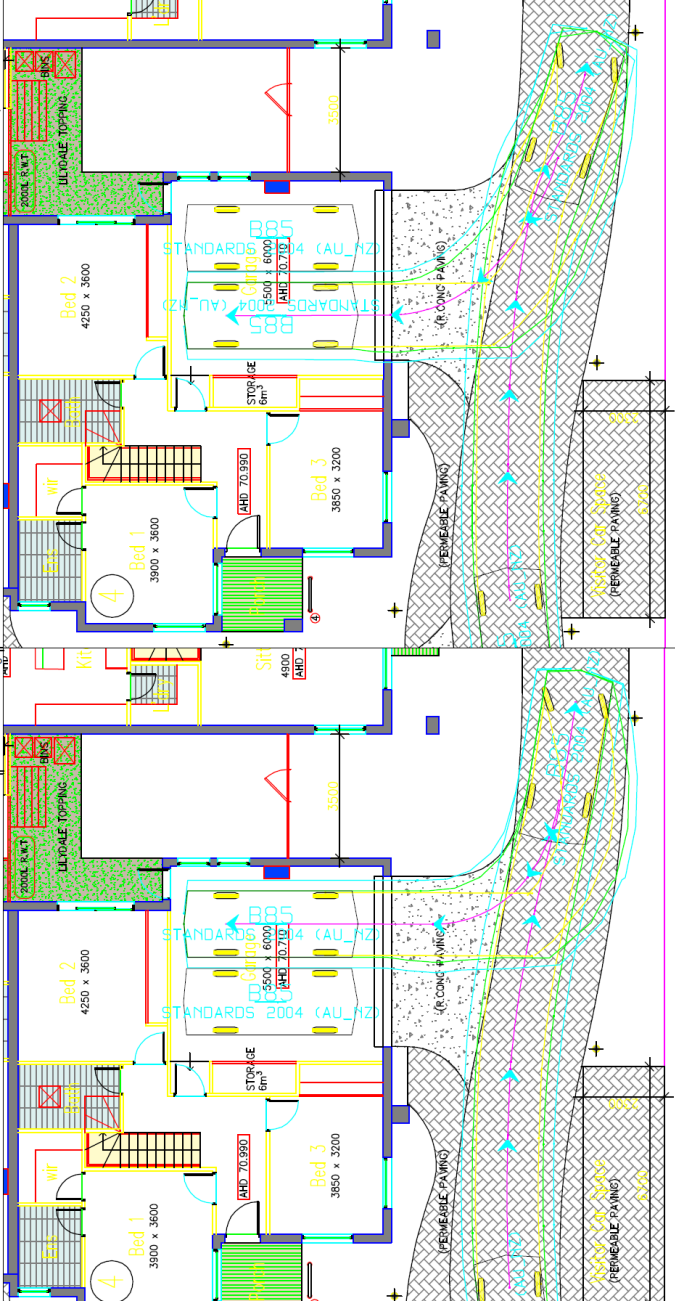
Steering Angle : 34.1

35 Hay Street, Box Hill South

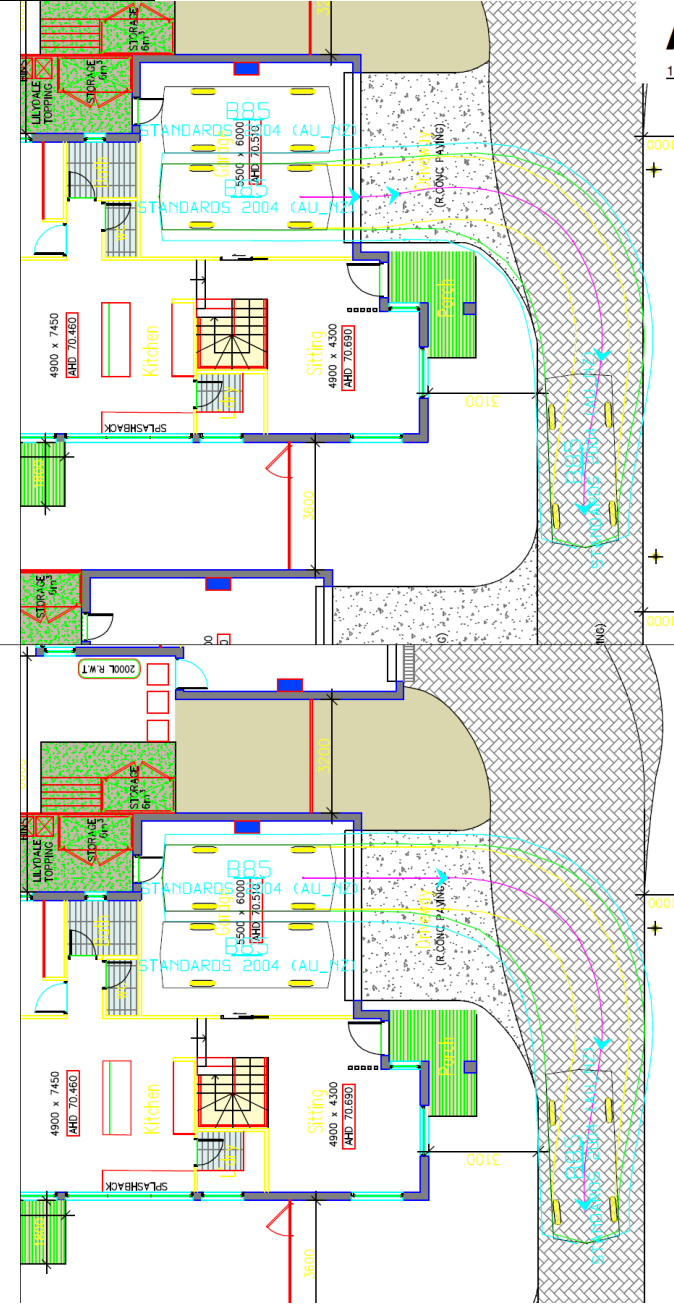
Scale 1:125 @ A3

Swept Path Analysis (B85 Car)

Plan prepared by EB Traffic Solutions Pty Ltd







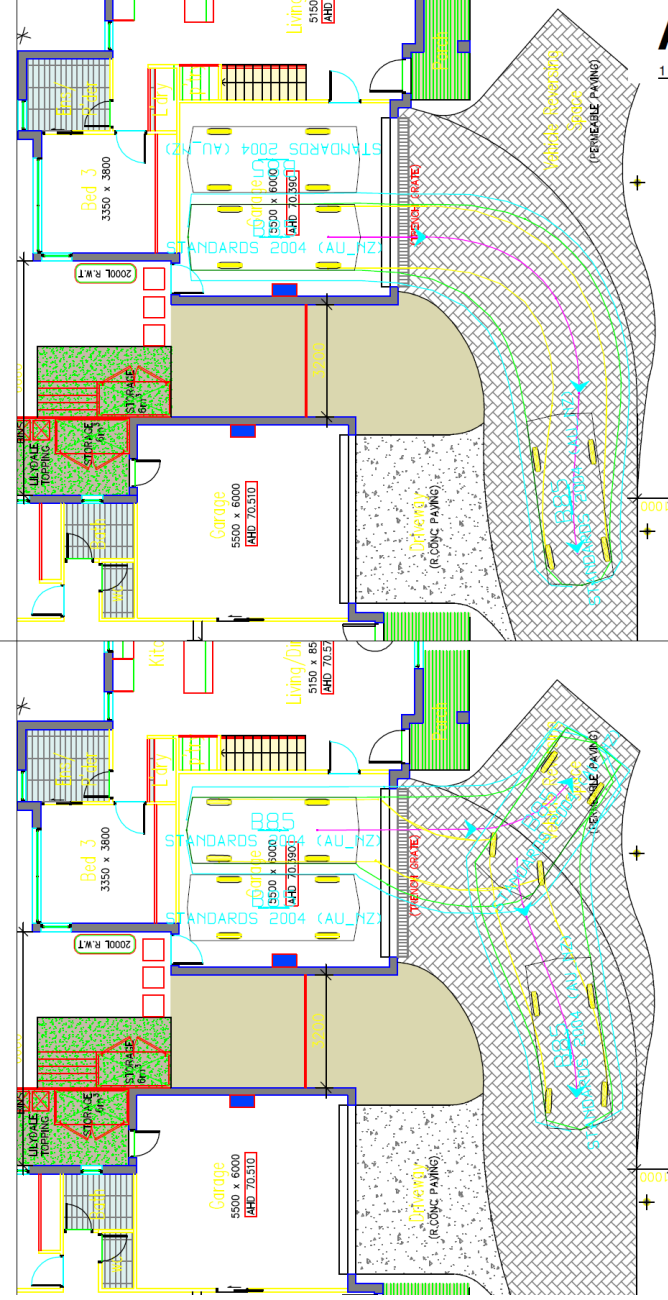
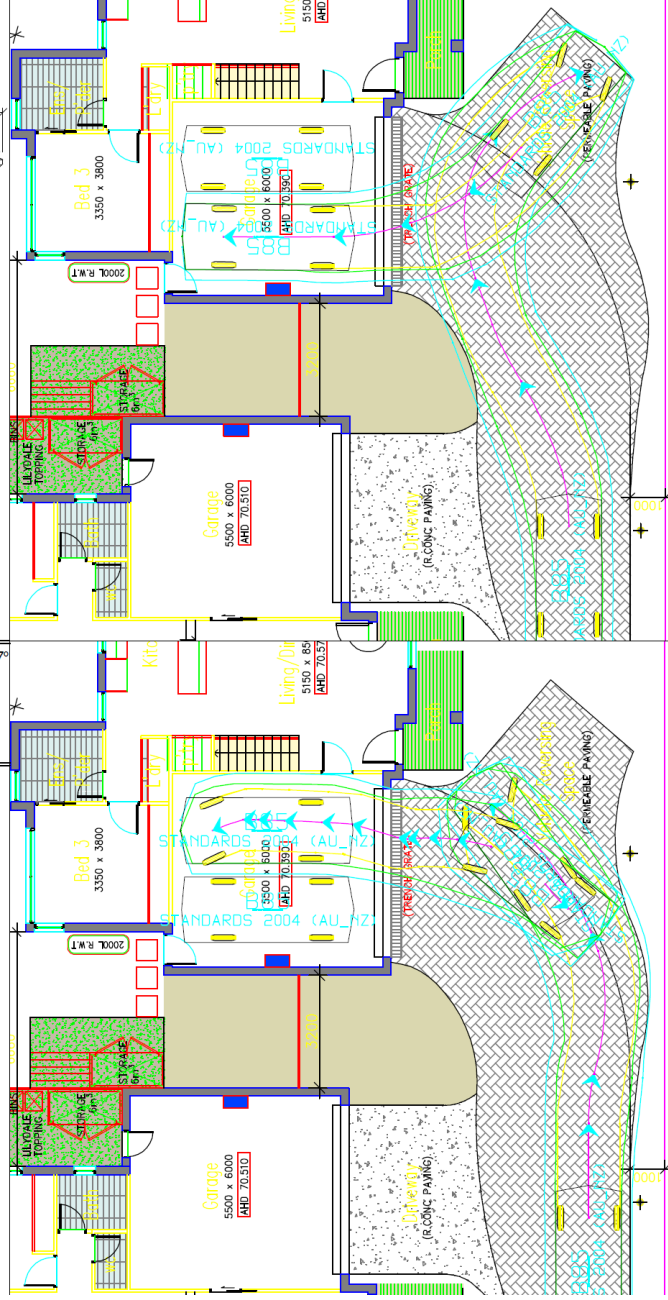
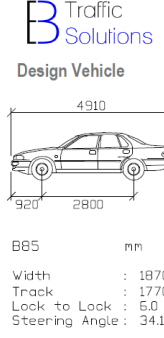
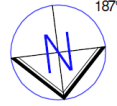


35 Hay Street, Box Hill South

Scale 1:125 @ A3

Swept Path Analysis (B85 Car)

Plan prepared by EB Traffic Solutions Pty Ltd

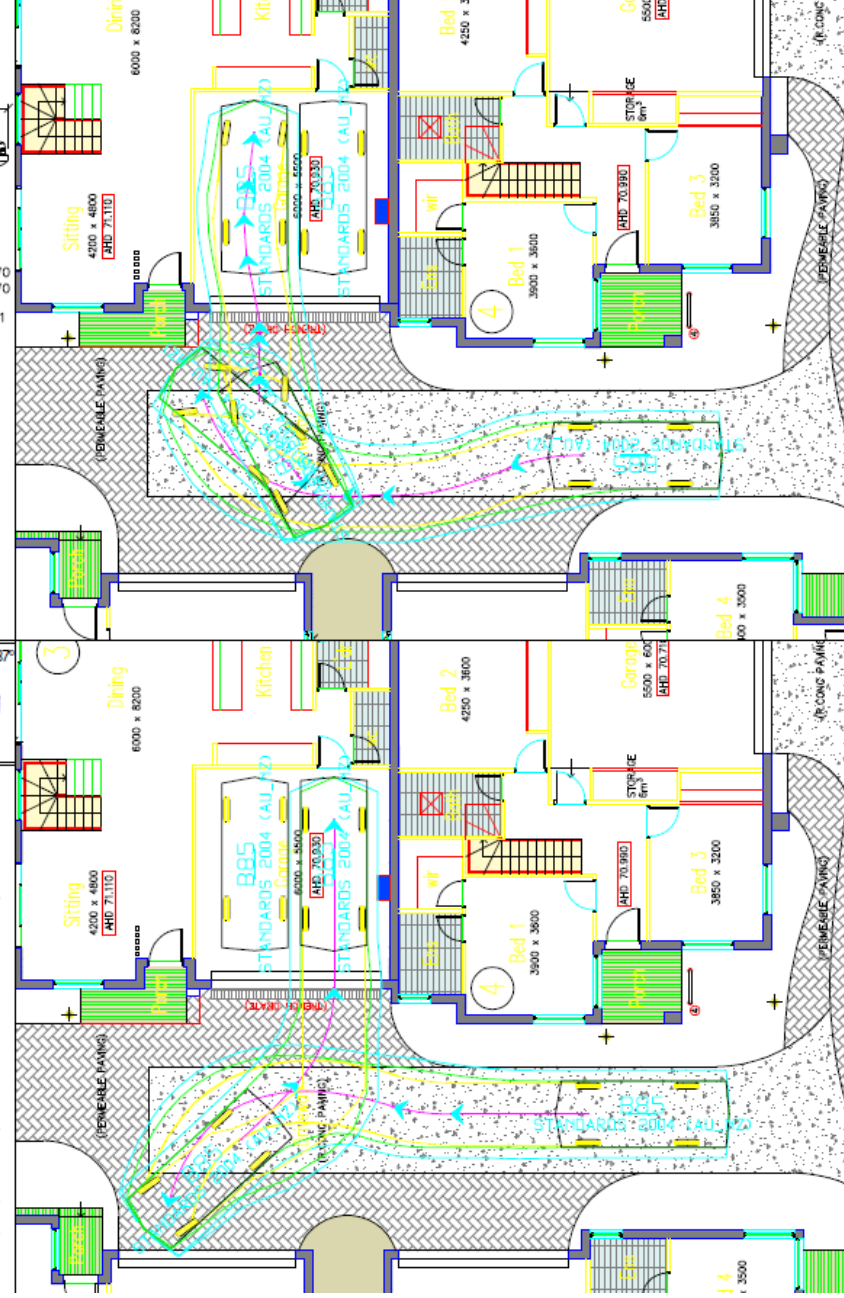
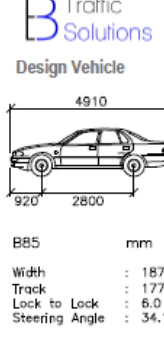


35 Hay Street, Box Hill South

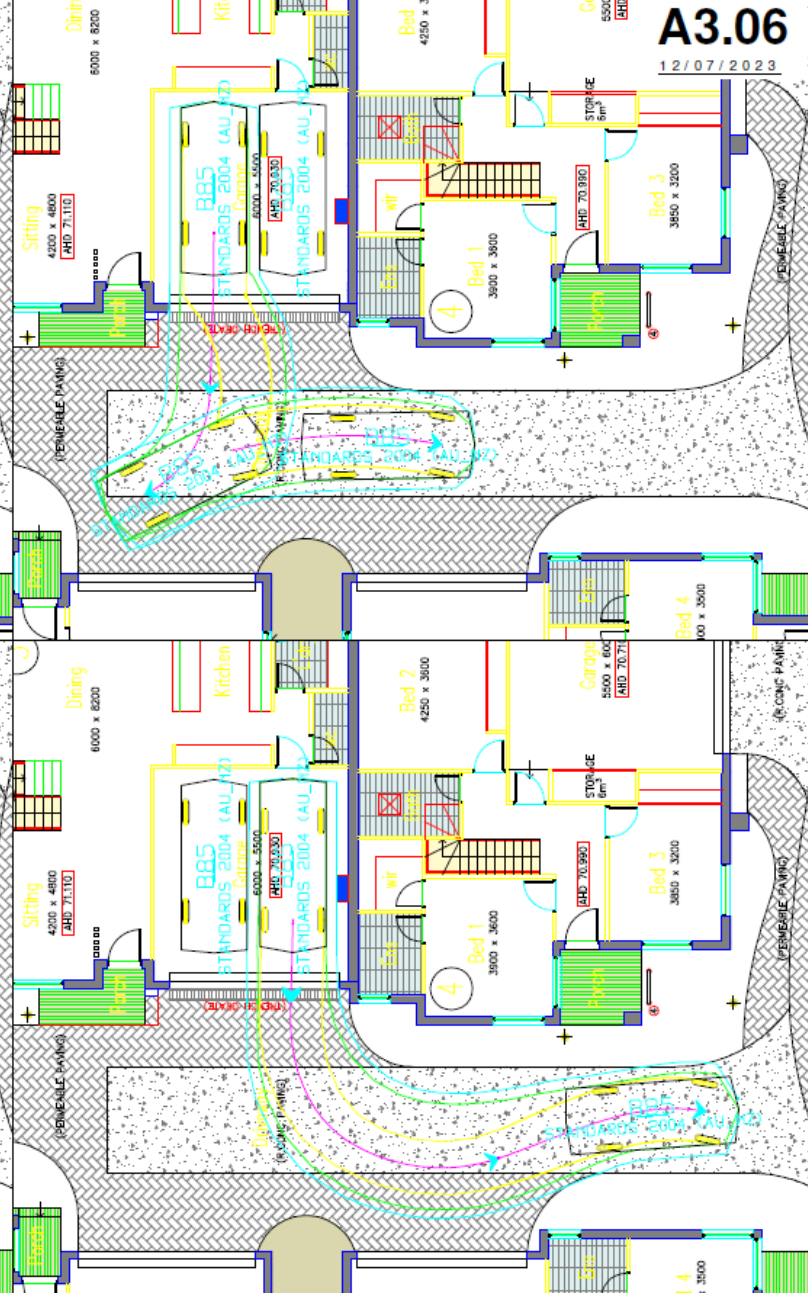
Scale 1:125 @ A3

Swept Path Analysis (B85 Car)

Plan prepared by EB Traffic Solutions Pty Ltd



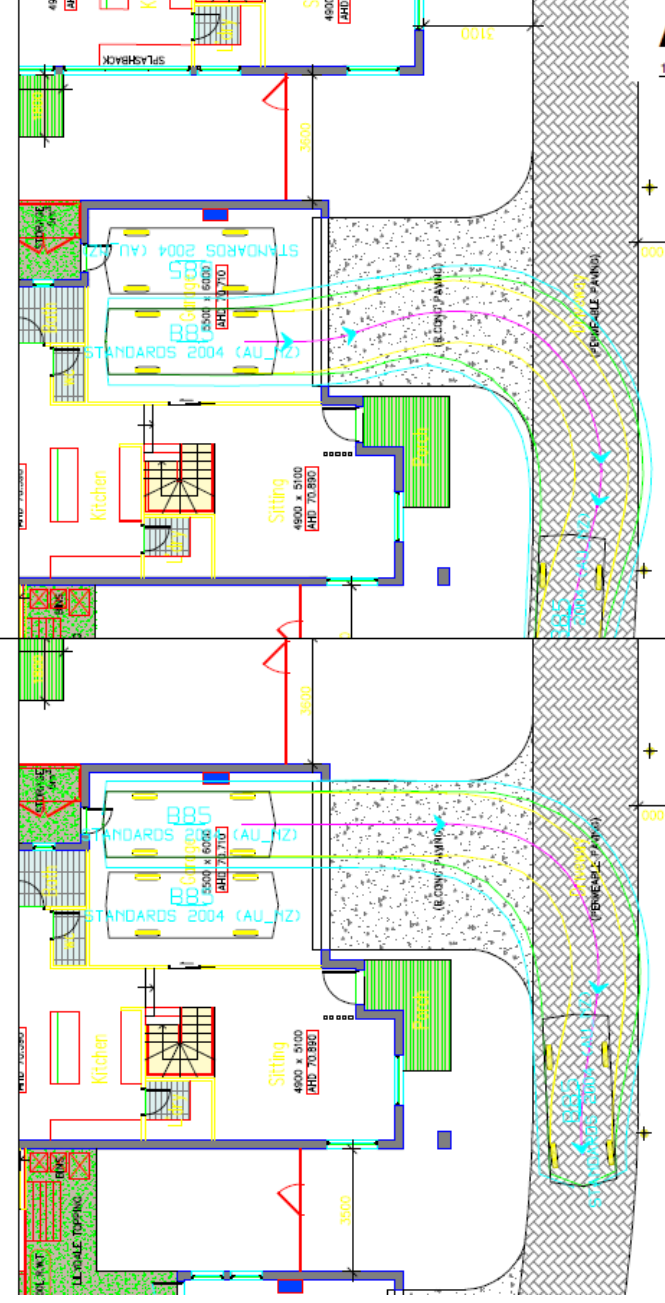
**EB Traffic Solutions**



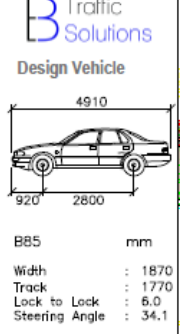
**A3.06**

12/07/2023









35 Hay Street, Box Hill South

Scale 1:125 @ A3  
Swept Path Analysis (B85 Car)  
Plan prepared by EB Traffic Solutions Pty Ltd

