

# Suburban Rail Loop

## Advocacy for Box Hill Public Realm Outcomes

March 2024







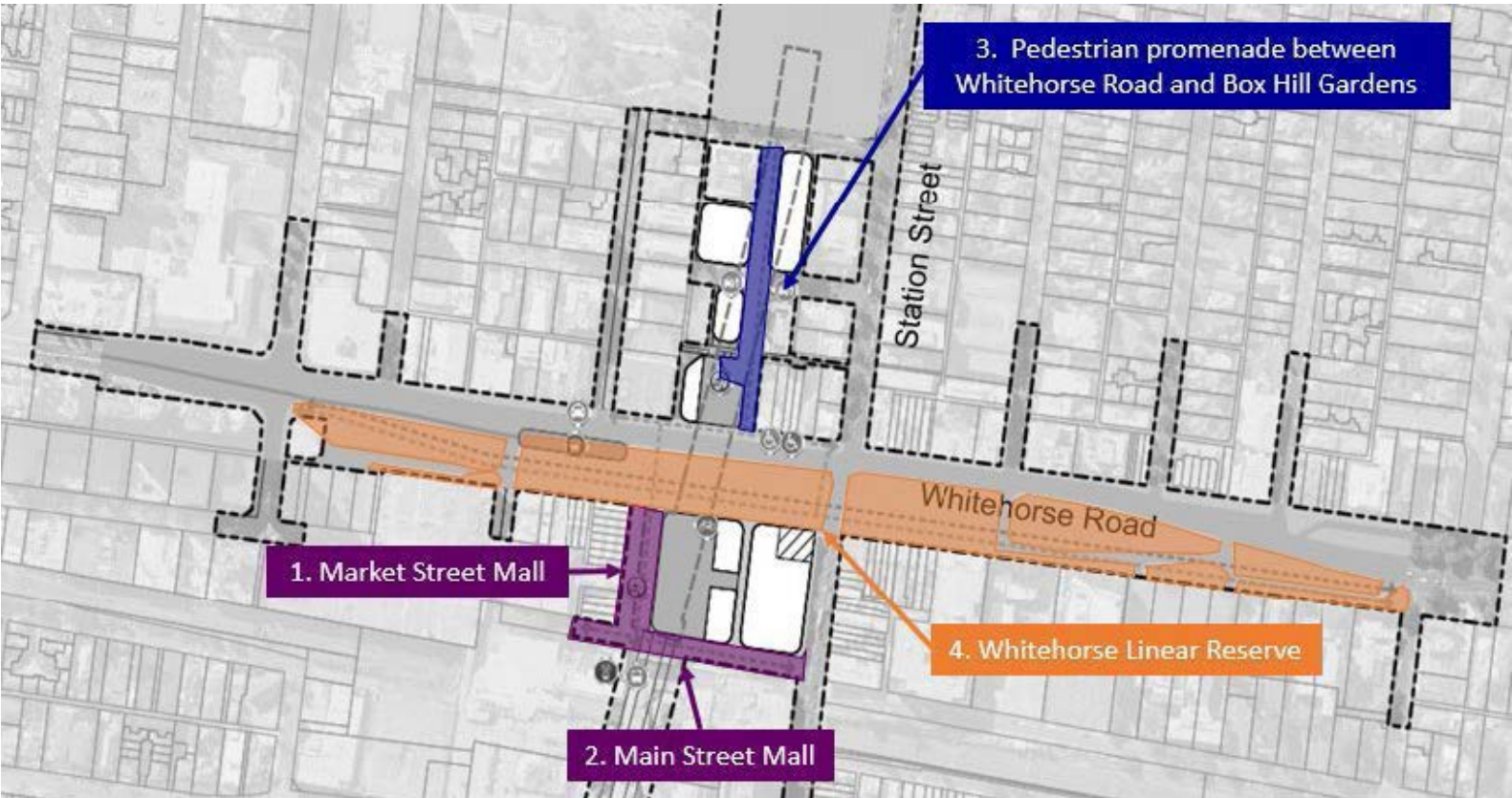
Council will continue to advocate to the state government for the Suburban Rail Loop (East) project to ensure Box Hill is designed and built as a vibrant, safe, accessible and enjoyable place to visit - day and night.

We seek to positively influence the public open space and urban realm outcomes to make Box Hill a great place for all.

Council has prepared an urban realm Vision for the public areas located around and connecting to the Box Hill SRL station entries. The designs incorporate public feedback, to meet community and Council priorities.

The Vision focuses on the following areas that are being redeveloped as part of Suburban Rail Loop (East) project:

- |   |   |  |   |
|---|---|--|---|
| <b>Area 1</b><br><i>Box Hill Mall -<br/>Market Street</i> | <b>Area 2</b><br><i>Box Hill Mall -<br/>Main Street</i> | <b>Area 3</b><br><i>The Promenade<br/>“Gardens Link”</i> | <b>Area 4</b><br><i>Whitehorse<br/>Linear Reserve</i> |
|---|---|--|---|





# Vision Area 1 – Box Hill Mall, Market Street

Market Street and Main Street require high-quality, well thought-out streetscape designs. The streetscape needs to be developed into vibrant, pedestrian-active spaces that can house a range of uses, with durable and functional surface treatments.

Market Street Mall will house the new Suburban Rail Loop East (SRLE) station entry and become the central hub between the existing Box Hill train station, the Tram Route 109 terminus (on the Whitehorse Road median) and the bus interchange (above Box Hill Central).

## Design Vision

Market Street should be developed as a “thoroughfare” for pedestrians accessing all modes of public transport available in central Box Hill. It should have generous greening and landscaped areas, that complement its built surrounds.

- Activation of the Mall should be encouraged through place making and day to day activities.
- Design considerations and priorities include:
  - Clear lines of vision and better lighting to improve safety, particularly during the evening.
  - Quality greening and landscape treatments.
  - Some casual outdoor dining opportunities.
  - Public art installations with local pieces, street art and murals.



ARTIST IMPRESSION, MARKET STREET BOX HILL



Clear pedestrian access, with clear building 'edges' and uses (Mill Lane, Sydney, NSW).



Public areas around a mall, with clear pedestrian areas (Darling Harbour, Sydney, NSW).



Public space maintains pedestrian areas for walking, whilst the buildings are well proportioned (Östra Drottninggatan, Sweden).

## SRL Station Entry (southern)

The station entry should be easy to find and of architectural interest. It should sit comfortably within the larger public area of the Mall.

## Pedestrian Connections and Mall Design

Clear and generous sized paths ensure Market Street can work as a pedestrian thoroughfare.

Cleanliness of the Mall and using high quality materials to build it, is essential to maintain the quality and pride of place.

## The “Heart” of Box Hill

The top of Market Street leads to the "Heart" of Box Hill. It sits within the Linear Reserve of Whitehorse Road and is a main walkway for pedestrians.



A wide path with generous garden beds and seating 'tucked' to the side, (Madison Avenue Plaza, New York City, USA).

## Design Features & Access

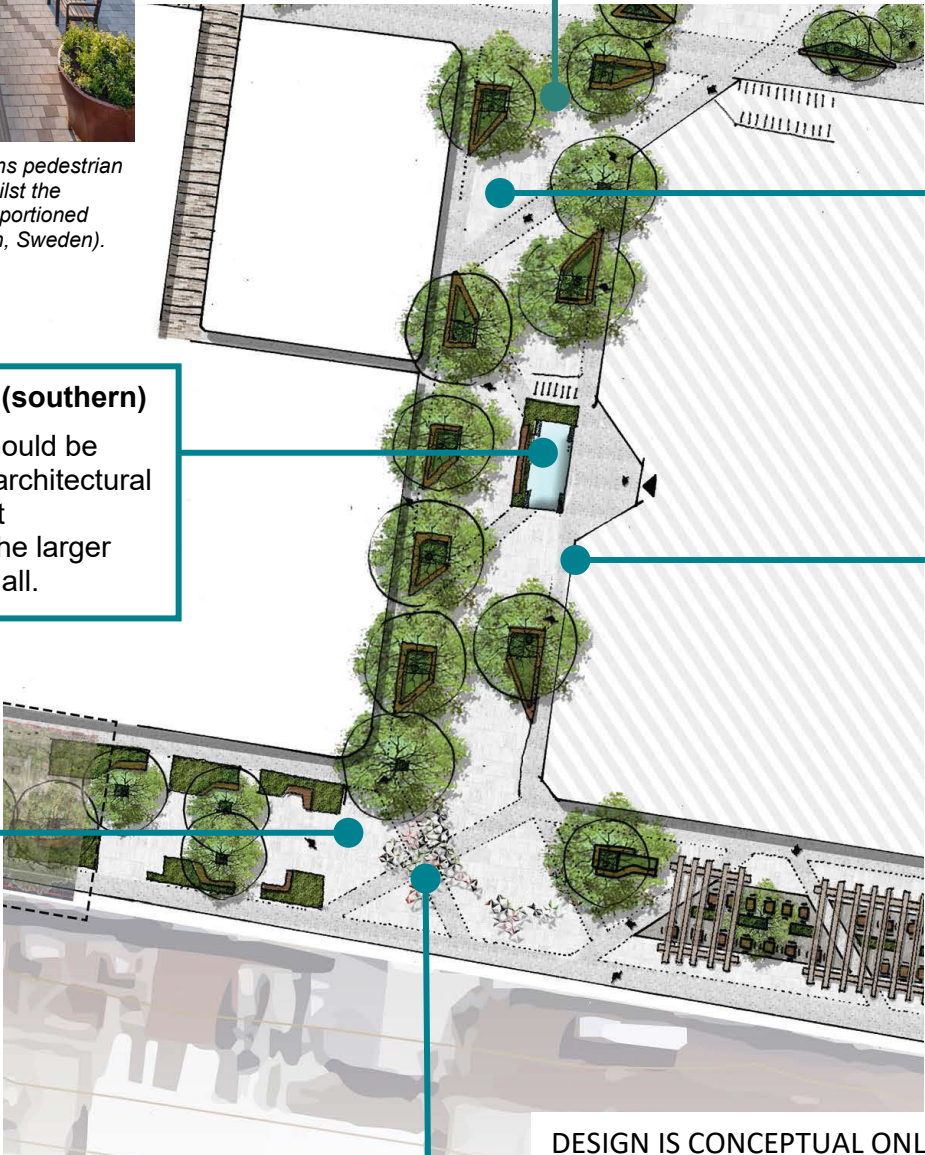
Clear pathways along shop fronts allow pedestrians to explore and "pause" in the Mall.

Generous garden beds and landscape greening defines local character and improves the amenity and sustainability of the Mall.

## Maintaining Human Scale

Both Malls will be pedestrian focused. It is important that adjacent buildings are scaled to compliment human use of the area, to maximise sunlight and minimise wind impacts.

These are current issues in the Box Hill Activity Centre, and good design of built forms can improve the outcome substantially.



DESIGN IS CONCEPTUAL ONLY

## An Appealing Public Realm

Art installations, place making and feature lighting throughout the Mall make it an appealing and comfortable area for pedestrians to use throughout the day, and into the evening.

Designing for crime prevention measures are a priority in the Mall and its surrounds.

- Paved Surfaces
- Feature Paving
- Garden Bed
- Dining Paving
- Seating
- Arbor Structure
- Adjoining buildings
- Potential future adjoining buildings (indicative only)



# Vision Area 2 – Box Hill Mall, Main Street

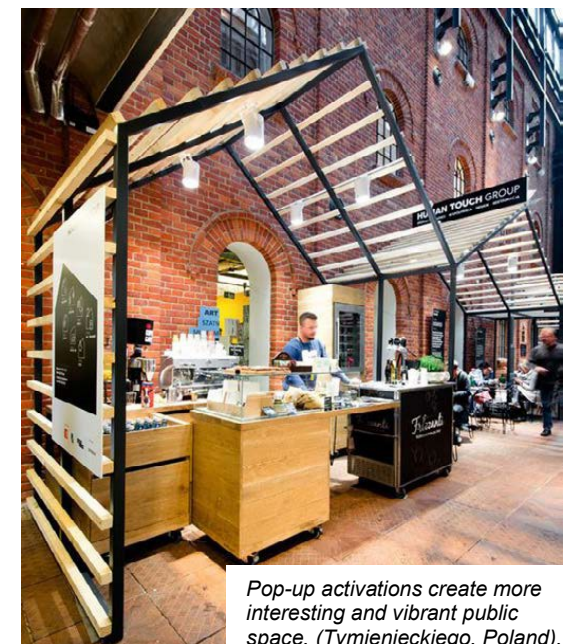
Council's vision is for Main Street to be developed as an "Eat Street" with generous pedestrian connections and outdoor dining opportunities. It should be a vibrant and exciting area, that people can visit and explore. It should be a hub for local activities promoting a vibrant destination.

## Design Priority

- Clear lines of vision and better lighting to improve safety, particularly during the evening.
- Generous landscape and greening treatments, casual outdoor dining including areas for short breaks.
- Seating and overhead shelters should be designed for comfortable use.
- Ensure nearby building heights are well designed and styled, particularly where they abut the Mall.
- Bicycle parking and scooter waiting points are in dedicated areas, so the pedestrian areas remain clear and accessible.
- Public art should be built into the public realm.
- The Mall is maintained well and a place for the community to be comfortable in.



Canopies overhead and well-located street furniture create a comfortable and usable street (Prague Market, Czech Republic).



Pop-up activations create more interesting and vibrant public space, (Tymienieckiego, Poland).

## Preserving Laneway Character

The laneway character of the area will be preserved with new and vibrant laneways running between new buildings.

These laneways will become new destinations and improve pedestrian connections between the Malls, public transport hubs and the Whitehorse 'Heart' on the linear reserve.

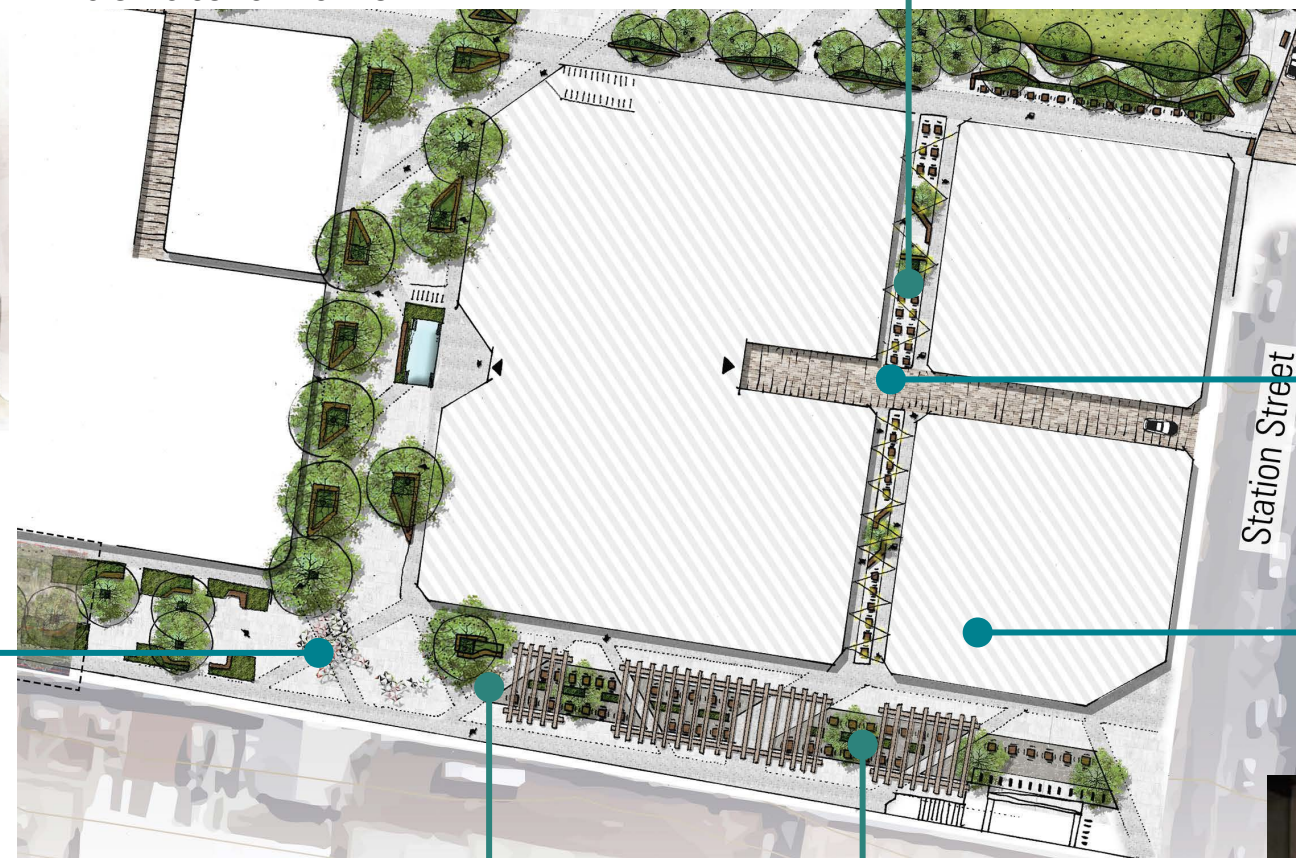


Feature lighting creates a vibrant nightscape and also works as public art (Darling Square, Sydney).



ARTIST IMPRESSION, MAIN STREET BOX HILL

DESIGN IS CONCEPTUAL ONLY



## Pedestrian Priority

Pedestrians will take priority in the laneways, with limited vehicle access.

## Civic Spaces

Civic spaces are important and create safer, more active areas. There is opportunity to create a "civic-use" space akin to that of a library.

## Appealing Public Realm

Art installations, place making and feature lighting throughout the Mall make it an appealing and comfortable area for pedestrians to use - throughout the day, and into the evening.

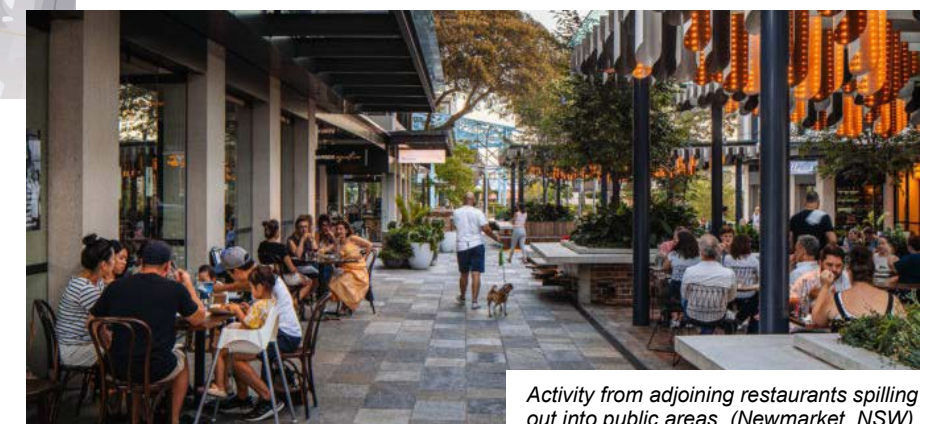
Design must incorporate crime prevention elements to improve safety.

## Main Street Pace

Main Street will be an important east-west pedestrian connection. It will likely have a slower pace, so pedestrians can enjoy the vibrant atmosphere and outdoor dining interactions.

## Main Street "Eat Street"

Main Street will be a vibrant destination and become known as an "Eat Street" where outdoor dining is prevalent, and an activated Mall creates a destination for locals and visitors to Box Hill.



Activity from adjoining restaurants spilling out into public areas. (Newmarket, NSW).

- Paved Surfaces
- Feature Paving
- Raised Shared Spaces
- Garden Bed
- Dining Paving
- Seating
- Arbor Structure
- Adjoining buildings
- Potential future adjoining buildings (indicative only)



# Vision Area 3 – The Promenade “Gardens Link”

connecting Whitehorse Road to the Box Hill Gardens

The Pedestrian Promenade is introduced as part of the SRLE design to connect the Whitehorse Road Linear Reserve with the Box Hill Gardens. It is a pedestrian walkway, where people can meander to and from the Gardens.

The Promenade needs to incorporate generous streetscape widths with clear sightlines between Whitehorse Road and the Gardens. It will also service the new SRLE (northern) station entry.

Design priorities include addressing security and having suitable lighting for comfortable pedestrian use.

Wind and overshadowing effects on the Promenade need to be addressed by the thoughtful design of adjoining buildings and landscape treatments.

## Design Vision

The Promenade is essentially a pedestrian walkway, where people can meander to and from the Gardens. It should be a green and comfortable space that people are keen to explore. It could be an area where small scale activities take place, and where pedestrians can enjoy a snack or meal.

Council's vision is for public art and outdoor dining opportunities to be built into the Promenade.

Design priorities include:

- Well developed lighting and crime prevention design principles to create a safer public area.
- Public Art and outdoor dining opportunities built into the design.
- Development of surrounding buildings must consider wind and overshadowing impacts to the Promenade.

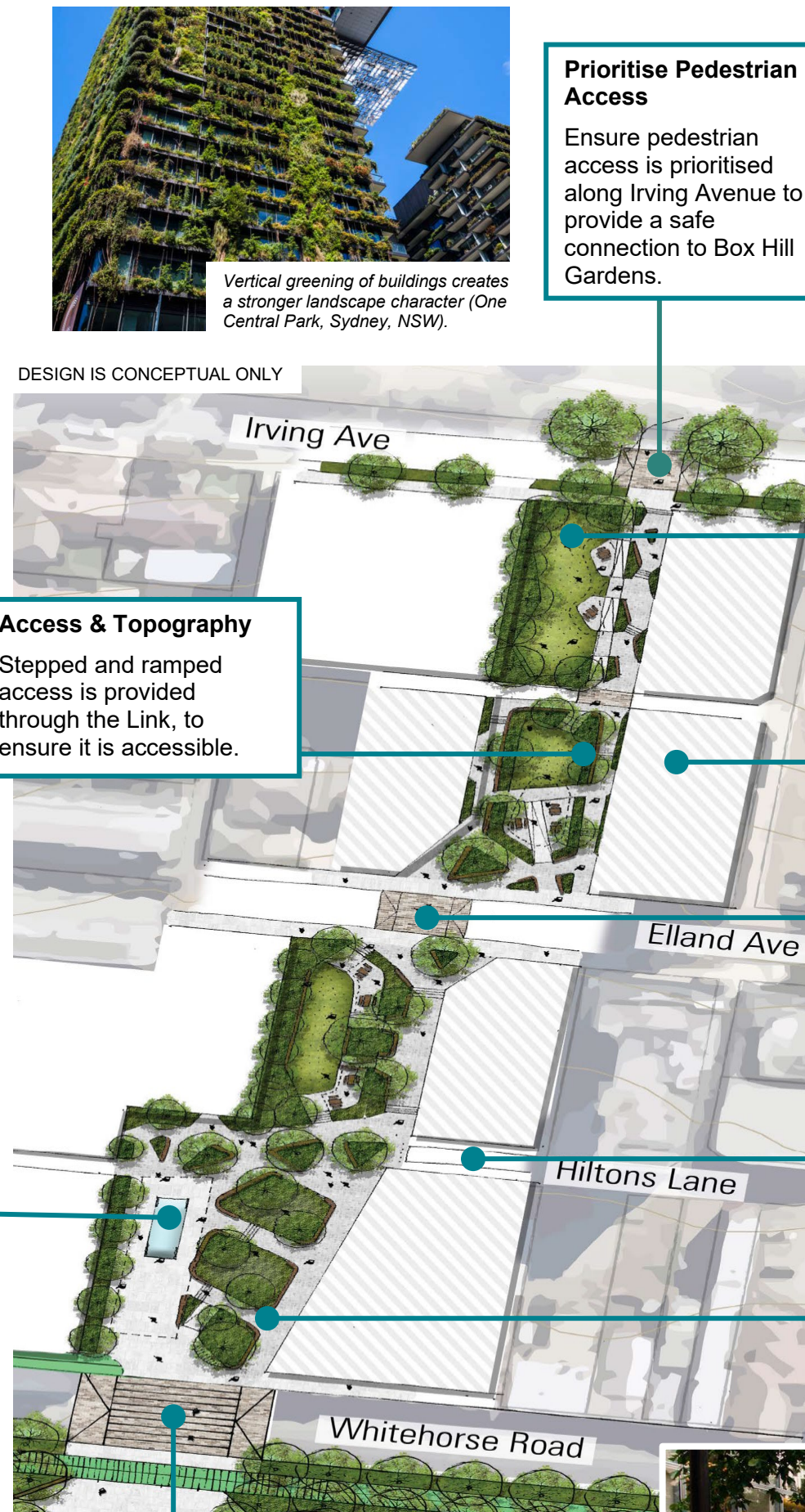
*Note: It is understood the surrounds of the Promenade will be addressed through future SRLE Precinct Planning processes.*



ARTIST IMPRESSION OF THE GARDENS LINK



Green space between residential buildings provide 'open' and semi-private spaces (Television Centre, London, United Kingdom).



Vertical greening of buildings creates a stronger landscape character (One Central Park, Sydney, NSW).

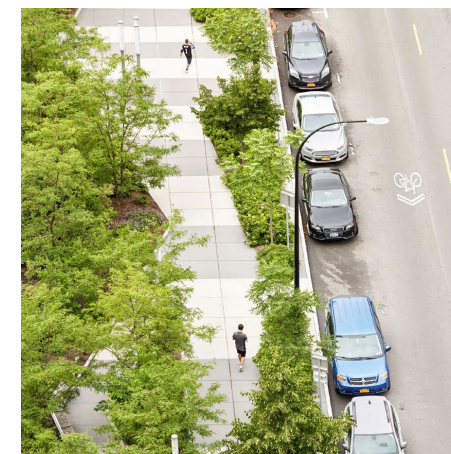
DESIGN IS CONCEPTUAL ONLY

## Access & Topography

Stepped and ramped access is provided through the Link, to ensure it is accessible.

## Prioritise Pedestrian Access

Ensure pedestrian access is prioritised along Irving Avenue to provide a safe connection to Box Hill Gardens.



A meandering path with canopy planting (Buffalo Niagara Medical Campus, New York, USA).

## Open Lawn Areas

Open lawn areas are provided for both commercial and residential users, and provide an important extension of "greening" to the Gardens.

## Optimising Solar Access

Future development should maximise sightlines and sunlight to the Link and minimise wind impacts.

## Pedestrian Friendly Design

Traffic calming treatments in key locations and intersections ensure pedestrian priority.

## Vehicle Use Reprioritised

Terminate vehicle access to prioritise pedestrian and passive-use of the Link.

## Pedestrian Exploring

The 'Gardens Link' provides a meandering path towards the gardens, with diverse plantings and canopy trees.

## Traffic Calming

Traffic calming installations prioritise pedestrian movements across Whitehorse Road to the "Heart" of the linear reserve.



Traffic calming through ground treatments assist pedestrian and vehicle movements (unknown location).



# Vision Area 4 – Whitehorse Linear Reserve (West)

## Linear Reserve West (from Nelson Road to Station Street)

The whole Linear Reserve extends from adjacent to Nelson Road towards Linsley Street, in the Box Hill activity centre. The West section extends from Nelson Road to Station Street.

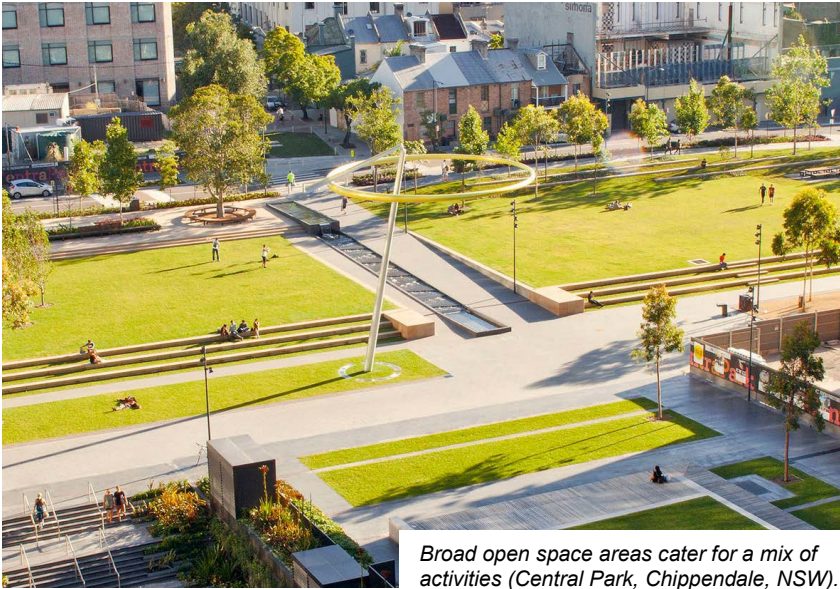
The Linear Reserve should be a mix of open space and streetscape treatments to create an exciting and vibrant area for people to use and explore. It should be a central hub for active and social recreation use, with open lawns and elegant landscape treatments.

The Linear Reserve should be developed with elements such as:

- A skylight feature to the underground rail for pedestrians to see what is happening below ground level.
- Well developed lighting and crime prevention design principles to create safer public areas.
- Greening of the reserve with open lawns, and gardens transitioning from an urban forest character to a more formal garden setting
- Casual outdoor dining with areas for short breaks, public seating and overhead shelters.



High quality traffic calming integrated into the streetscape (Dandenong, Vic).



Broad open space areas cater for a mix of activities (Central Park, Chippendale, NSW).



ARTIST IMPRESSION OF THE URBAN 'HEART'

**Landscaped Gardens**  
Engaging landscape with contemplative areas, ornamental gardens and public art scattered throughout.

**Bicycle Link**  
A dedicated bicycle link is located to avoid conflict between other uses occurring on the median. A landscape buffer limits views from the road.

**Tram Shelter**  
The tram stop is developed as a sustainable feature with elements like a green roof. This also works as an architectural feature and installation.

**Skylight Feature**  
A skylight feature to view the underground rail below.

**The Urban Forest**  
Tall canopy trees and lower under-storey planting provide shade and importantly contribute an urban cooling effect to the surrounds.

**Surfacing Treatments**  
A range of ground surface treatments including paving, gravel and feature treatments allow for flexible, accessible, comfortable and attractive spaces.

**Shared Zone Areas**  
Shared zones act as a service lane for large numbers of pedestrians to use, and some vehicles to enter.

**The "Heart"**  
The "Heart" of the reserve is an intersection point for pedestrian movements.

The "Heart" further extends to the central plaza which is ideal for open-air events and pop-up activations.

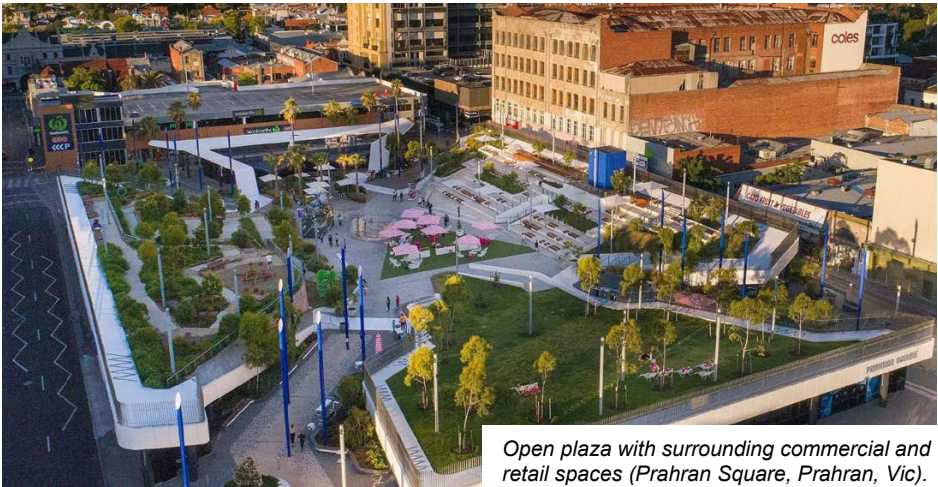
Open lawn with canopy tree shading.

A mix of outdoor dining to support businesses fronting onto the reserve, with seating for other users.

	Paved Surfaces		Tram Stop Garden Roof
	Feature Paving		Feature Garden Bed
	Raised Shared Spaces		Mulch
	Dedicated Bike Lane		Glass
	Bike Dismount / Slow Zone		Seating
	Garden Beds		Wooden Edging
	Lawn		Adjoining buildings
			Potential future adjoining buildings (indicative only)



A mix of formal seating and informal 'breakout spaces' integrated with native landscaping (Kangan Institute, Bendigo, Vic).



Open plaza with surrounding commercial and retail spaces (Prahran Square, Prahran, Vic).

DESIGN IS CONCEPTUAL ONLY



# Vision Area 4 – Whitehorse Linear Reserve (East)

## Linear Reserve East (from Station Street to Linsley Street)

The whole Linear Reserve extends from adjacent to Nelson Road towards Linsley Street, in the Box Hill activity centre. The East section extends from Station Street to Linsley Street.

It is shown to be a mix of passive and social "green spaces", with some urban streetscape treatments where high levels of pedestrian flows are a priority.

The reserve aims to be an exciting and vibrant area for people to use and explore, and a central hub for activities to occur in Box Hill. Some events could be held in the linear reserve, and smaller scale pop-up activations.

Green open lawns, art features, bicycle routes and pedestrians should activate this area.

Design considerations and priorities include:

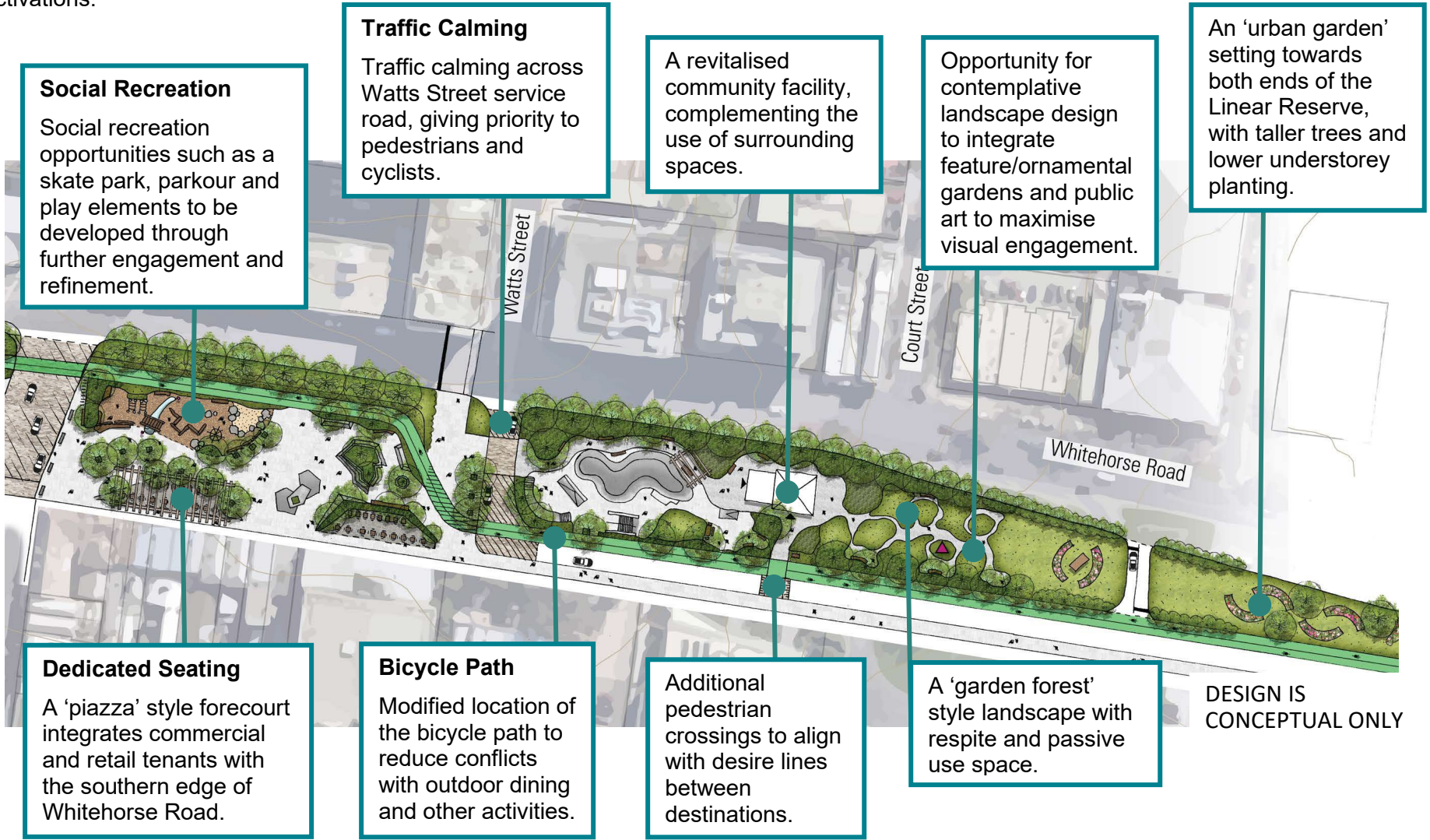
- Integration of the White Horse statue into the linear reserve, west of Market Street.
- The location of the South Africa and China War Memorial to be investigated further.
- Crime prevention design principles, including good night lighting.
- Further consideration and investigation to be given to active recreation opportunities (such as parkour, play space/s and urban skate parks) being located in the reserve.
- Ensuring greening of the reserve with open lawns, and gardens transitioning from an urban forest character to a more formal garden setting.



Interactive landscape and playspace (Kyneton Community Park, Kyneton, Vic).



Skating facilities integrated with landscaping within a broader park (Shenwan Skate Park, Shen Zhen, China).



### Social Recreation

Social recreation opportunities such as a skate park, parkour and play elements to be developed through further engagement and refinement.

### Traffic Calming

Traffic calming across Watts Street service road, giving priority to pedestrians and cyclists.

A revitalised community facility, complementing the use of surrounding spaces.

Opportunity for contemplative landscape design to integrate feature/ornamental gardens and public art to maximise visual engagement.

An 'urban garden' setting towards both ends of the Linear Reserve, with taller trees and lower understorey planting.

### Dedicated Seating

A 'piazza' style forecourt integrates commercial and retail tenants with the southern edge of Whitehorse Road.

### Bicycle Path

Modified location of the bicycle path to reduce conflicts with outdoor dining and other activities.

Additional pedestrian crossings to align with desire lines between destinations.

A 'garden forest' style landscape with respite and passive use space.

DESIGN IS CONCEPTUAL ONLY



An adaptable and movable nature play space, designed with wheels (Southbank Boulevard, Melbourne, Victoria).



Flexible 'piazza' style furniture with pop-up / micro-retailers in an urban forest setting, (Barcelona, Spain).



Small scale elements of interest located within a garden setting, (The Battery, New York, USA).



Skating facilities integrated within an urban plaza space (Ursuline Skate Park, Brussels, Belgium).





## ACKNOWLEDGEMENT OF COUNTRY

---

Whitehorse City Council acknowledges the Wurundjeri Woi-wurrung people of the Kulin Nation as the traditional owners of the land. We pay our respects to their Elders past, present and emerging.

## CONTACTING COUNCIL

---

Postal Address: Whitehorse City Council  
Locked Bag 2  
Nunawading 3131

ABN: 39 549 568 822

Telephone: 9262 6333 (including language support)

NRS: 133 677 then quote 9262 6333  
(Service for deaf or hearing impaired people)

Service Centre: Whitehorse Civic Centre  
379-399 Whitehorse Road,  
Nunawading 3131

Website: [www.whitehorse.vic.gov.au/contact-us](http://www.whitehorse.vic.gov.au/contact-us)

Email: [customer.service@whitehorse.vic.gov.au](mailto:customer.service@whitehorse.vic.gov.au)

Social Media: Connect with Whitehorse City Council



Subscribe: [www.whitehorse.vic.gov.au/subscribe](http://www.whitehorse.vic.gov.au/subscribe)  
(Stay up to date with Council news on topics you are interested in)

