



## Significant Tree Statements

### **Blackburn North**

## CITY OF WHITEHORSE- STATEMENT OF TREE SIGNIFICANCE

**Property Address: 25 Anne Street, Blackburn North**

Melways Ref: 48 A5

Surveyed: 9<sup>th</sup> February 2006 (AJ)

Tree No.	1	2	3
Tree Name	<i>Ulmus glabra</i> 'Lutescens' Golden Elm	<i>Angophora costata</i> Smooth Barked Apple	
DBH	71 cm	49+26 cm (two main stems)	
Height	12 metres	16 metres	
Spread	18 metres	11 metres	
Significance*	L	L	
Age (years)	Mature	Mature	
Condition*	G	G	
Assets within 4 metres	None	None	
SULE	20-50 years	20-50 years	
Notes			

\* Significance: N-National, S-State, R-Regional, L- Local

\* Condition: E- Excellent, G-Good, F-Fair, P-Poor, D-Dead

### Criteria for Significance:

	Historical significance		Rare/Localised distribution		Horticultural/Genetic Value		Particularly old
	Curious growth form		Outstanding size	*	Outstanding Example of the Species		Unique environmental contribution
	Unique Location/Context	*	Aesthetic Value		Aboriginal Culture		Good example of indigenous species

### Statement of Significance:

Both trees are located in the rear yard and their canopies are visible from Anne Street and surrounding streets. The Golden Elm is of good health and structure with very little Elm Leaf Beetle attack. It is a good example of its species. The Smooth Barked Apple stands taller than the Elm and is of good health. It has two main leaders - the union appeared sound and the possibility of failure is minimal. Both trees warrant inclusion on the Significant Tree Register.

### Site Map and photos:





**Tree #1 – the Golden Elm**



**Tree #2 – the Smooth Barked Apple**

## CITY OF WHITEHORSE- STATEMENT OF TREE SIGNIFICANCE

**Property Address: 11 Brendale Avenue, Blackburn North**

Melways Ref: 48 D5

Surveyed: 18<sup>th</sup> August 2006 (AJ)

Tree No.	1	2	3
Tree Name	<i>Eucalyptus camaldulensis</i> River Red Gum		
DBH	74 cm		
Height	14 metres		
Spread	14 metres		
Significance*	L		
Age (years)	Mature		
Condition*	G		
Assets within 4 metres	Footpath		
SULE	20-50 years		
Notes			

\* Significance: N-National, S-State, R-Regional, L- Local

\* Condition: E- Excellent, G-Good, F-Fair, P-Poor, D-Dead

### Criteria for Significance:

	Historical significance		Rare/Localised distribution		Horticultural/Genetic Value		Particularly old
	Curious growth form		Outstanding size		Outstanding Example of the Species		Unique environmental contribution
	Unique Location/Context	*	Aesthetic Value		Aboriginal Culture	*	Good example of indigenous species

### Statement of Significance:

This tree is located at the front of the property. It is of good health and structure and contributes directly to the streetscape in Brendale Avenue. It has a good life expectancy and is suitable for inclusion within the Significant Tree Register.

### Site map:



### Photo(s):



**The River Red Gum**



## CITY OF WHITEHORSE- STATEMENT OF TREE SIGNIFICANCE

**Property Address: 24 Brendale Avenue, Blackburn North**

Melways Ref: 48 C6

Surveyed: 16<sup>th</sup> August 2006 (AJ)

Tree No.	1	2	3
Tree Name	<i>Corymbia maculata</i> Spotted Gum		
DBH	89 cm		
Height	17 metres		
Spread	14 metres		
Significance*	L		
Age (years)	Mature		
Condition*	G		
Assets within 4 metres	Drive and footpath		
SULE	20-50 years		
Notes			

\* Significance: N-National, S-State, R-Regional, L- Local

\* Condition: E- Excellent, G-Good, F-Fair, P-Poor, D-Dead

### Criteria for Significance:

	Historical significance		Rare/Localised distribution		Horticultural/Genetic Value		Particularly old
	Curious growth form	*	Outstanding size		Outstanding Example of the Species		Unique environmental contribution
	Unique Location/Context	*	Aesthetic Value		Aboriginal Culture		Good example of indigenous species

### Statement of Significance:

This tree is of good health and structure. It has a large stem diameter and is reasonably tall. It contributes directly to the amenity and streetscape of Brendale Avenue and is suitable for inclusion within the Significant Tree Register.

### Site map:



### Photo(s):



**The Spotted Gum**

## CITY OF WHITEHORSE- STATEMENT OF TREE SIGNIFICANCE

**Property Address: 28 Brendale Avenue, Blackburn North**

Melways Ref: 48 C6

Surveyed: 9<sup>th</sup> February 2006 (AJ)

Tree No.	1	2	3
Tree Name	<i>Eucalyptus nicholii</i> Narrow-leaved Black Peppermint		
SBH	63 cm		
Height	12 metres		
Spread	10 metres		
Significance*	L		
Age (years)	~50 years		
Condition*	Good		
Assets within 4 metres	None		
Notes			

\* Significance: N-National, S-State, R-Regional, L- Local

\* Condition: E- Excellent, G-Good, F-Fair, P-Poor, D-Dead

### Criteria for Significance:

	Historical significance		Rare/Localised distribution		Horticultural/Genetic Value		Particularly old
	Curious growth form		Outstanding size		Outstanding Example of the Species		Unique environmental contribution
	Unique Location/Context	*	Aesthetic Value		Aboriginal Culture		Good example of indigenous specie

### Statement of Significance:

This is a moderate sized Narrow-leaved Black Peppermint. It is of good health and good structure. Unlike many trees within this species, it does not have any bifurcations or tight forks throughout the main structure or canopy. The owner of this property planted this tree approximately 50 years ago.

### Site Map:



### Photo(s):



**The Narrow-leaved Black Peppermint**

## CITY OF WHITEHORSE- STATEMENT OF TREE SIGNIFICANCE

**Property Address: 8 Bridgeford Avenue, Blackburn North**

Melways Ref: 48 C5

Surveyed: 16<sup>th</sup> August 2006 (AJ)

Tree No.	1	2	3
Tree Name	<i>Eucalyptus cephalocarpa</i> Silver Stringybark	<i>Eucalyptus melliodora</i> Yellow Box	
DBH	87 cm	72 cm	
Height	15 metres	18 metres	
Spread	15 metres	14 metres	
Significance*	L	L	
Age (years)	Mature	Mature	
Condition*	G	G	
Assets within 4 metres	Footpath and driveway	None	
SULE	20-50 years	20-50 years	
Notes			

\* Significance: N-National, S-State, R-Regional, L- Local

\* Condition: E- Excellent, G-Good, F-Fair, P-Poor, D-Dead

### Criteria for Significance:

	Historical significance		Rare/Localised distribution		Horticultural/Genetic Value		Particularly old
	Curious growth form		Outstanding size		Outstanding Example of the Species		Unique environmental contribution
	Unique Location/Context	*	Aesthetic Value		Aboriginal Culture	*	Good example of indigenous species

### Statement of Significance:

Tree #1, the Silver Stringybark is a large tree. It is of good health and structure and contributes directly to the streetscape of Bridgeford Avenue due to its size and location. Tree #2, the Yellow Box, is located in the rear but is visible from the street and is an important feature within the immediate landscape. Both trees are suitable for inclusion in the Significant Tree Register due to their size and contribution to the amenity of the greater landscape.

### Site map:



**Photo(s):**



**Tree #1 – the Silver Stringybark**



**Tree #2 – the Yellow Box**



## CITY OF WHITEHORSE- STATEMENT OF TREE SIGNIFICANCE

**Property Address:** 17 Bridgeford Avenue, Blackburn North

Melways Ref: 48 C5

Surveyed: 15<sup>th</sup> August 2006 (AJ)

Tree No.	1	2	3
Tree Name	<i>Eucalyptus melliodora</i> Yellow Box	<i>Eucalyptus radiata</i> Narrow-leaved Peppermint	<i>Eucalyptus radiata</i> Narrow-leaved Peppermint
DBH	69 cm	50 cm	60 cm
Height	18 metres	15 metres	15 metres
Spread	14 metres	12 metres	14 metres
Significance*	L	L	L
Age (years)	Mature	Mature	Mature
Condition*	G	G	G
Assets within 4 metres	House	None	Shed
SULE	20-50 years	20-50 years	20-50 years
Notes			

\* Significance: N-National, S-State, R-Regional, L- Local

\* Condition: E- Excellent, G-Good, F-Fair, P-Poor, D-Dead

### Criteria for Significance:

	Historical significance		Rare/Localised distribution		Horticultural/Genetic Value		Particularly old
	Curious growth form		Outstanding size		Outstanding Example of the Species		Unique environmental contribution
	Unique Location/Context	*	Aesthetic Value		Aboriginal Culture	*	Good example of indigenous species

### Statement of Significance:

Trees #1-3 are all of good health. Tree #1 is a very good example of its species. It contributes to the amenity of the area. Trees #2 & 3 are also suitable for inclusion due to their contribution to the landscape and for their habitat value.

### Site map:



**Photo(s):**



**Tree #1**



**Tree #2**



**Tree #3**

## CITY OF WHITEHORSE- STATEMENT OF TREE SIGNIFICANCE

**Property Address:** 21 Bridgeford Ave Blackburn Nth

Melways Ref: 61-h5

Survey Dates: 30.4.02 / March – April 2004

Tree No.	1	2	3
Tree Name	<i>Eucalyptus melliodora</i> Yellow Box		
Tree Size	Mature		
Height	30 metres		
Spread	10 metres		
Significance*	L		
Age (years)	30-60 years		
Condition*	G		
Assets within 4 metres			
SULE			
Notes			

\* Significance: N-National, S-State, R-Regional, L- Local

\* Condition: E- Excellent, G-Good, F-Fair, P-Poor, D-Dead

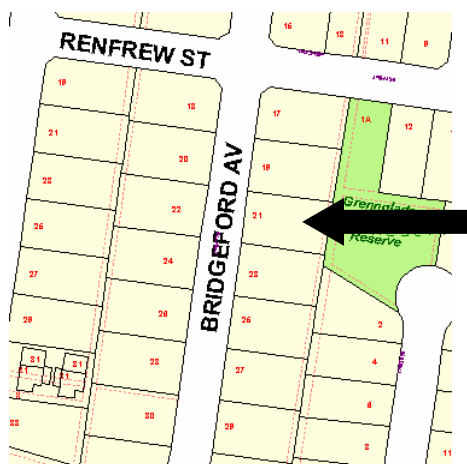
### Criteria for Significance (see page 2 for explanation of criteria):

Historical significance	Rare/Localised distribution	Horticultural/Genetic Value	Particularly old
Curious growth form	Outstanding size	Outstanding Example of the Species	* Unique environmental contribution
Unique Location/Context	Aesthetic Value	Aboriginal Culture	* Good example of indigenous species

### Statement of Significance:

This is an indigenous habitat tree of local provenance, that is part of regional vegetation linkages. It provides a vegetation corridor for local bird-life and fauna. It acts as a vegetation source upon which re-vegetation and re-generation of indigenous flora can occur. This tree is integral to the establishment of a sustainable urban and native landscape.

### Map:



### Photo(s):



## CITY OF WHITEHORSE- STATEMENT OF TREE SIGNIFICANCE

**Property Address:** 23 Bridgeford Avenue, Blackburn North

Melways Ref: 48 C6

Surveyed: 4<sup>th</sup> October 2006 (AJ)

Tree No.	1	2	3
Tree Name	<i>Eucalyptus melliodora</i> Yellow Box		
DBH	64 cm		
Height	15 metres		
Spread	8 metres		
Significance*	L		
Age (years)	Mature		
Condition*	G		
Assets within 4 metres	None		
SULE	20-50 years		
Notes			

\* Significance: N-National, S-State, R-Regional, L- Local

\* Condition: E- Excellent, G-Good, F-Fair, P-Poor, D-Dead

### Criteria for Significance:

	Historical significance		Rare/Localised distribution		Horticultural/Genetic Value		Particularly old
	Curious growth form		Outstanding size		Outstanding Example of the Species		Unique environmental contribution
	Unique Location/Context	*	Aesthetic Value		Aboriginal Culture	*	Good example of indigenous species

### Statement of Significance:

This tree is mainly located in the reserve to the rear of this property. Approximately 5% of the base is on 23 Bridgeford Avenue and therefore this tree has been included. It is of good health and structure and it contributes to the amenity of the area. It is an important habitat tree also. It is suitable for inclusion on the Significant Tree Register.

### Site map:



### Photo(s):



**The Yellow Box**



## CITY OF WHITEHORSE- STATEMENT OF TREE SIGNIFICANCE

**Property Address: 5 Burch Street, Blackburn North**

Melways Ref: 48 B6

Surveyed: 9<sup>th</sup> February 2006 (AJ)

Tree No.	1	2	3
Tree Name	<i>Eucalyptus mannifera</i> Red Spotted Gum		
DBH	63 cm		
Height	18 metres		
Spread	12 metres		
Significance*	L		
Age (years)	Mature		
Condition*	G		
Assets within 4 metres	Carport		
SULE	20-50 years		
Notes			

\* Significance: N-National, S-State, R-Regional, L- Local

\* Condition: E- Excellent, G-Good, F-Fair, P-Poor, D-Dead

### Criteria for Significance:

	Historical significance		Rare/Localised distribution		Horticultural/Genetic Value		Particularly old
	Curious growth form	*	Outstanding size		Outstanding Example of the Species		Unique environmental contribution
	Unique Location/Context	*	Aesthetic Value		Aboriginal Culture		Good example of indigenous species

### Statement of Significance:

This Red Spotted Gum is located in the rear yard. It is of good health and structure and is a good example of its species. The main stem and structural limbs appear sound and the tree showed no outward signs of instability. It is visible from surrounding streets and contributes to the overall amenity of the landscape in this area. It has some limbs that mildly overhang the dwelling and the carport. It is worthy of inclusion.

### Site Map:



### Photo(s):



**The Red Spotted Gum**

## CITY OF WHITEHORSE- STATEMENT OF TREE SIGNIFICANCE

**Property Address:** 4 Conrad Court, Blackburn North

Melways Ref: 48 B5

Surveyed: 9<sup>th</sup> February 2006 (AJ)

Tree No.	1	2	3
Tree Name	<i>Corymbia ficifolia</i> Red Flowering Gum		
DBH	49+39 cm		
Height	13 metres		
Spread	15 metres		
Significance*	L		
Age (years)	50 + years		
Condition*	G		
Assets within 4 metres	Water meter		
SULE	20-50 years		
Notes			

\* Significance: N-National, S-State, R-Regional, L- Local

\* Condition: E- Excellent, G-Good, F-Fair, P-Poor, D-Dead

### Criteria for Significance:

Historical significance		Rare/Localised distribution		Horticultural/Genetic Value		Particularly old
Curious growth form		Outstanding size		Outstanding Example of the Species		Unique environmental contribution
Unique Location/Context	*	Aesthetic Value		Aboriginal Culture		Good example of indigenous species

### Statement of Significance:

This is a mature Red Flowering Gum. It is of good health and reasonably good structure. It has two main leaders and the union appeared sound. It contributes to the aesthetics of the streetscape. The owner of the property believes it to be at least 50 years old as it was a mature sized tree when they moved in 30 years ago. It is worthy of inclusion on the Significant Tree Register.

### Site Map:



### Photo(s):



**The Flowering Gum**

## CITY OF WHITEHORSE- STATEMENT OF TREE SIGNIFICANCE

**Property Address: 41 Diana Drive, Blackburn North**

Melways Ref: 48 C7

Surveyed: 9<sup>th</sup> February 2006 (AJ)

Tree No.64	1	2	3
<b>Tree Name</b>	<i>Quercus canariensis</i> Algerian Oak		
<b>DBH</b>	38+38+27 cm		
<b>Height</b>	11 metres		
<b>Spread</b>	13 metres		
<b>Significance*</b>	L		
<b>Age (years)</b>	Mature		
<b>Condition*</b>	G		
<b>Assets within 4 metres</b>	None		
<b>SULE</b>	20-50 years		
<b>Notes</b>			

\* Significance: N-National, S-State, R-Regional, L- Local

\* Condition: E- Excellent, G-Good, F-Fair, P-Poor, D-Dead

### Criteria for Significance:

	Historical significance		Rare/Localised distribution		Horticultural/Genetic Value		Particularly old
	Curious growth form		Outstanding size		Outstanding Example of the Species		Unique environmental contribution
	Unique Location/Context	*	Aesthetic Value		Aboriginal Culture		Good example of indigenous species

### Statement of Significance:

This Oak is mature and dominates the property. It is growing at the front of the site and contributes directly to the surrounding streetscape. It is of good health and structure. It requires some pruning to maintain clearance from the roadway. This tree is worthy of inclusion based on its size and location.

### Site Map:



### Photo(s):



**The Algerian Oak**

## CITY OF WHITEHORSE- STATEMENT OF TREE SIGNIFICANCE

**Property Address: 45 Diana Drive, Blackburn North**

Melways Ref: 47 C7

Surveyed: 18<sup>th</sup> August 2006 (AJ)

Tree No.	1	2	3
Tree Name	<i>Corymbia ficifolia</i> Red Flowing Gum		
DBH	64 cm		
Height	13 metres		
Spread	13 metres		
Significance*	L		
Age (years)	Mature		
Condition*	G		
Assets within 4 metres	Footpath		
SULE	20-50 years		
Notes			

\* Significance: N-National, S-State, R-Regional, L- Local

\* Condition: E- Excellent, G-Good, F-Fair, P-Poor, D-Dead

### Criteria for Significance:

	Historical significance		Rare/Localised distribution		Horticultural/Genetic Value		Particularly old
	Curious growth form		Outstanding size		Outstanding Example of the Species		Unique environmental contribution
	Unique Location/Context	*	Aesthetic Value		Aboriginal Culture		Good example of indigenous species

### Statement of Significance:

This tree is located in the front of the property and contributes directly to the streetscape in Diana Drive. It is of good health and structure and high aesthetic value to the wider landscape. It is suitable for inclusion within the Register. The trees at the rear are not suitable for inclusion due to structural defects and were not assessed.

### Site map:



### Photo(s):



**The Red Flowering Gum**



## CITY OF WHITEHORSE- STATEMENT OF TREE SIGNIFICANCE

**Property Address: 22 Douglas Street, Blackburn North**

Melways Ref: 48 A5

Surveyed: 11<sup>th</sup> August 2006 (AJ)

Tree No.	1	2	3
Tree Name	<i>Quercus robur</i> English Oak		
DBH	43+40+30+30+40 cm (5 stems)		
Height	15 metres		
Spread	16 metres		
Significance*	L		
Age (years)	Mature		
Condition*	G		
Assets within 4 metres	None		
SULE	20-50 years		
Notes			

\* Significance: N-National, S-State, R-Regional, L- Local

\* Condition: E- Excellent, G-Good, F-Fair, P-Poor, D-Dead

### Criteria for Significance:

	Historical significance		Rare/Localised distribution		Horticultural/Genetic Value		Particularly old
	Curious growth form		Outstanding size	*	Outstanding Example of the Species		Unique environmental contribution
	Unique Location/Context	*	Aesthetic Value		Aboriginal Culture		Good example of indigenous species

### Statement of Significance:

This tree is a large Oak located in the rear yard. It is of good health and contributes directly to the wider landscape and canopy cover of the area. It does have five main stems but this is typical for its species and the unions were all good. This tree has self-grafted in a number of places. This tree is a very good example of its species.

### Site map:



### Photo(s):



**The Oak**



**The base of the Oak**

## CITY OF WHITEHORSE- STATEMENT OF TREE SIGNIFICANCE

**Property Address:** 3 Greenglade Court, Blackburn North

Melways Ref: 48 C6

Surveyed: 9<sup>th</sup> February 2006 (AJ)

Tree No.	1	2	3
Tree Name	<i>Eucalyptus goniocalyx</i> Long-leaved Box		
DBH	90 cm		
Height	15 metres		
Spread	14 metres		
Significance*	L		
Age (years)	Mature		
Condition*	Fair to good		
Assets within 4 metres	None		
SULE	20-30 years		
Notes			

\* Significance: N-National, S-State, R-Regional, L- Local

\* Condition: E- Excellent, G-Good, F-Fair, P-Poor, D-Dead

### Criteria for Significance:

Historical significance		Rare/Localised distribution		Horticultural/Genetic Value		Particularly old
Curious growth form	*	Outstanding size		Outstanding Example of the Species		Unique environmental contribution
Unique Location/Context		Aesthetic Value		Aboriginal Culture		Good example of indigenous species

### Statement of Significance:

This is a large Long-leaved Box. It has evidence of previous white ant activity at the base however this no longer appeared active. It has had some large limbs removed from over the driveway but appeared to be coping well. The canopy was of good health and the main stem and structural limbs are sound. This tree contributes to the streetscape and it is indigenous and forms part of a habitat corridor within this area. It is worthy of inclusion.

### Site Map:



### Photo(s):



**The Long-leaved Box**

## CITY OF WHITEHORSE- STATEMENT OF TREE SIGNIFICANCE

**Property Address: 8 Greenglade Court, Blackburn North**

Melways Ref: 48 C6

Surveyed: 9<sup>th</sup> February 2006 (AJ)

Tree No.	1	2	3
Tree Name	<i>Eucalyptus cinerea</i> Argyle Apple		
DBH	65+66 cm (2 main stems)		
Height	15 metres		
Spread	12 metres		
Significance*	L		
Age (years)	Mature		
Condition*	Fair to good		
Assets within 4 metres	None		
SULE	20-30 years		
Notes			

\* Significance: N-National, S-State, R-Regional, L- Local

\* Condition: E- Excellent, G-Good, F-Fair, P-Poor, D-Dead

### Criteria for Significance:

Historical significance		Rare/Localised distribution		Horticultural/Genetic Value		Particularly old
Curious growth form		Outstanding size		Outstanding Example of the Species		Unique environmental contribution
Unique Location/Context	*	Aesthetic Value		Aboriginal Culture		Good example of indigenous species

### Statement of Significance:

This tree is considered significant based on its size and its contribution to the local streetscape. It is bifurcated at the base however the union appeared sound and would be manageable through appropriate weight-reduction pruning. This tree is located at the front of the property.

### Site Map:



### Photo(s):



**The Argyle Apple**



## CITY OF WHITEHORSE- STATEMENT OF TREE SIGNIFICANCE

**Property Address: 27 Gunyah Road, Blackburn North**

Melways Ref: 48 C7

Surveyed: 18<sup>th</sup> August 2006 (AJ)

Tree No.	1	2	3
Tree Name	<i>Eucalyptus camaldulensis</i> River Red Gum		
DBH	105 cm		
Height	15 metres		
Spread	19 metres		
Significance*	L		
Age (years)	Mature		
Condition*	G		
Assets within 4 metres	Driveway		
SULE	20-50 years		
Notes			

\* Significance: N-National, S-State, R-Regional, L- Local

\* Condition: E- Excellent, G-Good, F-Fair, P-Poor, D-Dead

### Criteria for Significance:

	Historical significance		Rare/Localised distribution		Horticultural/Genetic Value		Particularly old
	Curious growth form	*	Outstanding size	*	Outstanding Example of the Species		Unique environmental contribution
	Unique Location/Context	*	Aesthetic Value		Aboriginal Culture	*	Good example of indigenous species

### Statement of Significance:

This tree is located at the front of the property. It is of good health and structure and has a very wide canopy spread. It contributes directly to the streetscape in Gunyah Road. It is a very good example of its species and has a good life expectancy. It is suitable for inclusion within the Significant Tree Register.

### Site map:



### Photo(s):



**The River Red Gum**



## CITY OF WHITEHORSE- STATEMENT OF TREE SIGNIFICANCE

**Property Address: 40 Gunyah Road, Blackburn North**

Melways Ref: 48 C7

Surveyed: 9<sup>th</sup> February 2006 (AJ)

Tree No.	1	2	3
Tree Name	<i>Fraxinus excelsior</i> 'Aurea' Golden Ash		
DBH	32+36 cm (Grafted base – 1.4 metres)		
Height	9 metres		
Spread	11 metres		
Significance*	L		
Age (years)	50+ years		
Condition*	G		
Assets within 4 metres	None		
SULE	20-50 years		
Notes			

\* Significance: N-National, S-State, R-Regional, L- Local

\* Condition: E- Excellent, G-Good, F-Fair, P-Poor, D-Dead

### Criteria for Significance:

	Historical significance		Rare/Localised distribution		Horticultural/Genetic Value		Particularly old
	Curious growth form		Outstanding size	*	Outstanding Example of the Species		Unique environmental contribution
	Unique Location/Context	*	Aesthetic Value		Aboriginal Culture		Good example of indigenous species

### Statement of Significance:

This Golden Ash is of good health and structure. It has a wide spread and has developed a very large swelling at the base of the graft. There is very little epicormic growth from this point and it is a good example of its species. It was planted in the 1950's. This tree is worthy of inclusion on the Significant Tree register.

### Site Map:



### Photo(s):



**The Golden Ash**

## CITY OF WHITEHORSE- STATEMENT OF TREE SIGNIFICANCE

**Property Address: 10 Heatherlea Court, Blackburn North**

Melways Ref: 48 B7

Surveyed: 8<sup>th</sup> February 2006 (AJ)

Tree No.	1	2	3
Tree Name	<i>Quercus cerris</i> Turkey Oak		
DBH	88 cm		
Height	14 metres		
Spread	18 metres		
Significance*	L		
Age (years)	~100 years		
Condition*	G		
Assets within 4 metres	None		
SULE	50+ years		
Notes			

\* Significance: N-National, S-State, R-Regional, L- Local

\* Condition: E- Excellent, G-Good, F-Fair, P-Poor, D-Dead

### Criteria for Significance:

*	Historical significance		Rare/Localised distribution		Horticultural/Genetic Value	*	Particularly old
	Curious growth form		Outstanding size		Outstanding Example of the Species		Unique environmental contribution
	Unique Location/Context	*	Aesthetic Value		Aboriginal Culture		Good example of indigenous species

### Statement of Significance:

This Turkey Oak is located in the rear. It is of good health and structure and contributes to the overall canopy cover of the area. It is worthy of inclusion due to its age, it is believed to be planted around the 1900's. It is suitable for inclusion due to its health, structure and historical significance. This site is covered by a Heritage Overlay HO47.

### Site map:



### Photo(s):



**The Turkey Oak**

## CITY OF WHITEHORSE- STATEMENT OF TREE SIGNIFICANCE

**Property Address: 53 Joseph Street, North Blackburn**

Melways Ref: 47 K4

Surveyed: 21<sup>st</sup> August 2006 (AJ)

Tree No.	1	2	3
Tree Name	<i>Eucalyptus melliodora</i> Yellow Box	<i>Eucalyptus melliodora</i> Yellow Box	
DBH	52 cm	62 cm	
Height	16 metres	17 metres	
Spread	11 metres	14 metres	
Significance*	L	L	
Age (years)	Mature	Mature	
Condition*	G	G	
Assets within 4 metres	Footpath	Garage	
SULE	20-50 years	20-50 years	
Notes			

\* Significance: N-National, S-State, R-Regional, L- Local

\* Condition: E- Excellent, G-Good, F-Fair, P-Poor, D-Dead

### Criteria for Significance:

	Historical significance		Rare/Localised distribution		Horticultural/Genetic Value		Particularly old
	Curious growth form		Outstanding size		Outstanding Example of the Species		Unique environmental contribution
	Unique Location/Context	*	Aesthetic Value		Aboriginal Culture	*	Good example of indigenous species

### Statement of Significance:

Trees #1 & 2 are of good health, structure and form. They contribute to the area that is characterized by large indigenous trees both in Joseph Street Reserve and the Freeway Reserve. They are both suitable for inclusion within the Significant Tree Register.

### Site map:



**Photo(s):**



**Tree #1**



**Tree #2**



## CITY OF WHITEHORSE- STATEMENT OF TREE SIGNIFICANCE

**Property Address: 68 Joseph Street, Blackburn North**

Melways Ref: 47 K4

Surveyed: 14<sup>th</sup> February 2006 (AJ)

Tree No.	1	2	3
<b>Tree Name</b>	<i>Eucalyptus melliodora</i> Yellow Box	<i>Corymbia maculata</i> Spotted Gum	
<b>DBH</b>	53 cm	39 cm	
<b>Height</b>	18 metres	15 metres	
<b>Spread</b>	15 metres	10 metres	
<b>Significance*</b>	L	L	
<b>Age (years)</b>	Mature	Mature	
<b>Condition*</b>	G	G	
<b>Assets within 4 metres</b>	None	None	
<b>SULE</b>	20-50 years	20-50 years	
<b>Notes</b>	Front centre of yard	On boundary (west)	

\* Significance: N-National, S-State, R-Regional, L- Local

\* Condition: E- Excellent, G-Good, F-Fair, P-Poor, D-Dead

### Criteria for Significance:

	Historical significance		Rare/Localised distribution		Horticultural/Genetic Value		Particularly old
	Curious growth form		Outstanding size		Outstanding Example of the Species		Unique environmental contribution
	Unique Location/Context	*	Aesthetic Value		Aboriginal Culture	*	Good example of indigenous species

### Statement of Significance:

Both trees #1 and 2 are of good health and structure. They contribute to the streetscape and canopy cover of this area. Tree #1 is a Yellow Box, an indigenous species. It is an important part of the habitat corridor formed in this area from the reserve at the rear of the properties next to the Eastern Freeway. These trees are worthy of inclusion due to their amenity and habitat value.

### Site Map:





**Tree #1**



**Tree #2**

## CITY OF WHITEHORSE- STATEMENT OF TREE SIGNIFICANCE

**Property Address: 70 Joseph Street, Blackburn North**

Melways Ref: 47 K4

Surveyed: 14<sup>th</sup> February 2006 (AJ)

Tree No.	1	2	3
<b>Tree Name</b>	<i>Eucalyptus melliodora</i> Yellow Box	<i>Eucalyptus melliodora</i> Yellow Box	<i>Eucalyptus melliodora</i> Yellow Box
<b>DBH</b>	89 cm	58 cm	73 cm
<b>Height</b>	22 metres	18 metres	20 metres
<b>Spread</b>	20 metres	10 metres	15 metres
<b>Significance*</b>	L	L	L
<b>Age (years)</b>	Mature	Mature	Mature
<b>Condition*</b>	G	G	Fair to good
<b>Assets within 4 metres</b>	None	None	Footpath
<b>SULE</b>	20-50 years	20-50 years	20-50 years
<b>Notes</b>	In rear NW corner		

Tree No.	4		
<b>Tree Name</b>	<i>Eucalyptus melliodora</i> Yellow Box		
<b>DBH</b>	52 cm		
<b>Height</b>	16 metres		
<b>Spread</b>	8 metres		
<b>Significance*</b>	L		
<b>Age (years)</b>	Mature		
<b>Condition*</b>	G		
<b>Assets within 4 metres</b>	Footpath		
<b>SULE</b>	20-50 years		
<b>Notes</b>			

\* Significance: N-National, S-State, R-Regional, L- Local

\* Condition: E- Excellent, G-Good, F-Fair, P-Poor, D-Dead

### Criteria for Significance:

	Historical significance		Rare/Localised distribution		Horticultural/Genetic Value		Particularly old
	Curious growth form		Outstanding size		Outstanding Example of the Species	*	Unique environmental contribution
	Unique Location/Context		Aesthetic Value		Aboriginal Culture	*	Good example of indigenous species

### Statement of Significance:

Tree #1 is located in the rear northwest corner of the property. It is a very large tree and it contributes to the overall landscape. It is visible from Joseph Street and from the Eastern Freeway to the rear. Trees #2-4 are all located in the front yard. They are good health and structure. Tree #3 has two main leaders however the union appeared sound and was fairly open. The integrity of trees #3 and 4 was difficult to assess accurately due to ivy growth. These trees form part of a habitat corridor with reserves that border the Eastern Freeway. Given the health, size and location of these trees they are all worthy of inclusion on the Significant Tree Register.

Site Map and photo(s):



Tree #1



Tree #2



Tree #3



Tree #4



## CITY OF WHITEHORSE- STATEMENT OF TREE SIGNIFICANCE

**Property Address:** 6 Julie Street, Blackburn North

Melways Ref: 48 C7

Surveyed: 8<sup>th</sup> February 2006 (AJ)

Tree No.	1	2	3
Tree Name	<i>Quercus palustris</i> Pin Oak		
DBH	69 cm		
Height	19 metres		
Spread	13 metres		
Significance*	L		
Age (years)	~45 years		
Condition*	G		
Assets within 4 metres	Gas meter		
SULE	20-50 years		
Notes			

\* Significance: N-National, S-State, R-Regional, L- Local

\* Condition: E- Excellent, G-Good, F-Fair, P-Poor, D-Dead

### Criteria for Significance:

	Historical significance		Rare/Localised distribution		Horticultural/Genetic Value		Particularly old
	Curious growth form	*	Outstanding size		Outstanding Example of the Species		Unique environmental contribution
	Unique Location/Context	*	Aesthetic Value		Aboriginal Culture		Good example of indigenous species

### Statement of Significance:

This is a large Pin Oak located in the front of the property. It is of good health and structure. It has been pruned on one side to clear the neighbouring driveway but this has not detracted from the aesthetics of the tree. It is of large size and contributes to the streetscape of the surrounding area.

### Site map:



### Photo(s):



**The Pin Oak**

## CITY OF WHITEHORSE- STATEMENT OF TREE SIGNIFICANCE

**Property Address:** 17-21 Junction Road, Blackburn North

Melways Ref: 48 B6

Surveyed: 7<sup>th</sup> February 2006 (AJ)

Tree No.	1	2	3
<b>Tree Name</b>	<i>Arbutus unedo</i> Irish Strawberry Tree	<i>Grevillea robusta</i> Silky Oak	<i>Quercus palustris</i> Pin Oak
<b>DBH</b>	48 cm	75 cm	51 cm
<b>Height</b>	4.5 metres	16 metres	12 metres
<b>Spread</b>	6 metres	10 metres	13 metres
<b>Significance*</b>	L	L	L
<b>Age (years)</b>	Mature	Mature	Mature
<b>Condition*</b>	G	G	G
<b>Assets within 4 metres</b>	None	None	None
<b>SULE</b>	20-50 years	20-50 years	20-50 years
<b>Notes</b>			

Tree No.	4	
<b>Tree Name</b>	<i>Ulmus glabra</i> 'Lutescens' Golden Elm	
<b>DBH</b>	103 cm	
<b>Height</b>	12 metres	
<b>Spread</b>	21 metres	
<b>Significance*</b>	L	
<b>Age (years)</b>	Mature	
<b>Condition*</b>	G	
<b>Assets within 4 metres</b>	None	
<b>SULE</b>	20-50 years	
<b>Notes</b>		

\* Significance: N-National, S-State, R-Regional, L- Local

\* Condition: E- Excellent, G-Good, F-Fair, P-Poor, D-Dead

### Criteria for Significance:

*	Historical significance		Rare/Localised distribution		Horticultural/Genetic Value		Particularly old
	Curious growth form		Outstanding size		Outstanding Example of the Species		Unique environmental contribution
	Unique Location/Context	*	Aesthetic Value		Aboriginal Culture		Good example of indigenous species

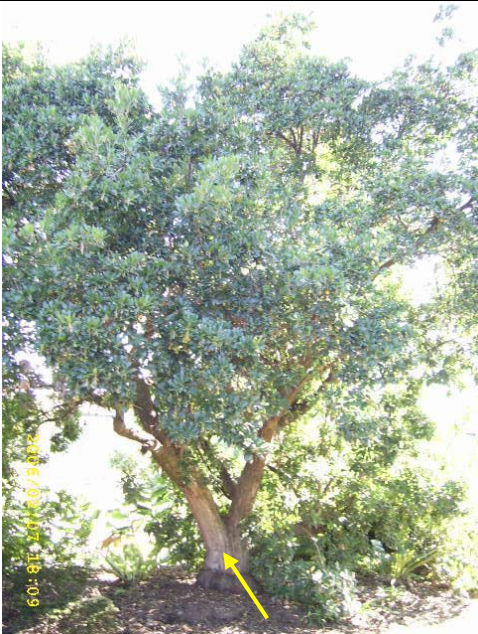
### Statement of Significance:

Heritage Overlay (HO50) covers this site, 'Harwood'. It is one of the original homesteads of the area and has a number of significant trees throughout the gardens. This overlay does not protect trees. All trees assessed are believed to be original plantings. The Irish Strawberry Tree, Grevillea, Pin Oak and Elm are of good health and fairly good structure. There is some minor decay present in the main stems but this is expected in trees of this age. Trees #1-4 are worthy of inclusion within the Significant Tree Register.

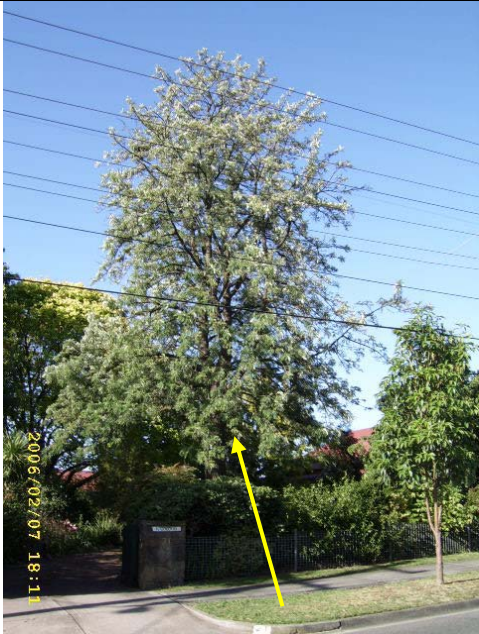
Site Map:



Photos(s):



Tree #1



Tree #2





**Tree #3**



**Tree #4**



## CITY OF WHITEHORSE- STATEMENT OF TREE SIGNIFICANCE

**Property Address: 10 London Court, Blackburn North**

Melways Ref: 48 B6

Surveyed: 7<sup>th</sup> February 2006 (AJ)

Tree No.	1	2	3
Tree Name	<i>Corymbia citriodora</i> Lemon-scented Gum	<i>Corymbia citriodora</i> Lemon-scented Gum	
DBH	54 cm	48 cm	
Height	12 metres	15 metres	
Spread	14 metres	10 metres	
Significance*	L	L	
Age (years)	Mature	Mature	
Condition*	G	G	
Assets within 4 metres	None	None	
SULE	20-50 years	20-50 years	
Notes	East tree	West tree	

\* Significance: N-National, S-State, R-Regional, L- Local

\* Condition: E- Excellent, G-Good, F-Fair, P-Poor, D-Dead

### Criteria for Significance:

	Historical significance		Rare/Localised distribution		Horticultural/Genetic Value		Particularly old
	Curious growth form		Outstanding size		Outstanding Example of the Species		Unique environmental contribution
	Unique Location/Context	*	Aesthetic Value		Aboriginal Culture		Good example of indigenous species

### Statement of Significance:

Trees #1 & 2 are located in the front yard of the property. They contribute to the streetscape and greater landscape. They are of good health and structure. The two trees together are of high aesthetic value to the local landscape and surrounding area. Tree #1 has been slightly suppressed by tree #2. They are worthy of inclusion within the Register.

### Site map:



### Photo(s):



**The Lemon-scented Gum**

## CITY OF WHITEHORSE- STATEMENT OF TREE SIGNIFICANCE

**Property Address: 5 Majtli Street, Blackburn North**

Melways Ref: 47 H6

Surveyed: 21<sup>st</sup> August 2006 (AJ)

Tree No.	1	2	3
Tree Name	<i>Corymbia citriodora</i> Lemon-scented Gum		
DBH	59 cm		
Height	16 metres		
Spread	14 metres		
Significance*	L		
Age (years)	Mature		
Condition*	G		
Assets within 4 metres	Footpath and driveway		
SULE	20-50 years		
Notes			

\* Significance: N-National, S-State, R-Regional, L- Local

\* Condition: E- Excellent, G-Good, F-Fair, P-Poor, D-Dead

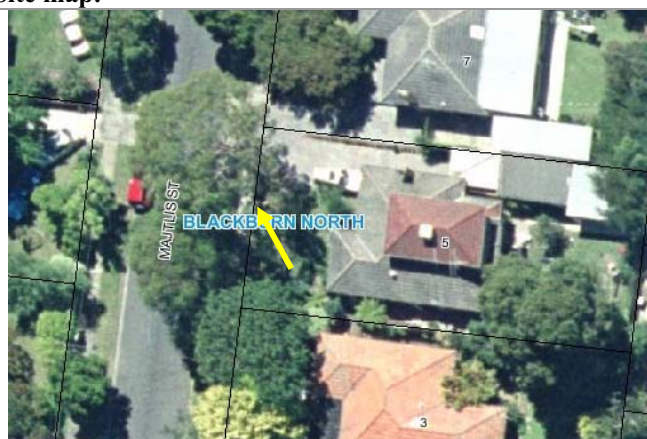
### Criteria for Significance:

	Historical significance		Rare/Localised distribution		Horticultural/Genetic Value		Particularly old
	Curious growth form		Outstanding size		Outstanding Example of the Species		Unique environmental contribution
	Unique Location/Context	*	Aesthetic Value		Aboriginal Culture		Good example of indigenous species

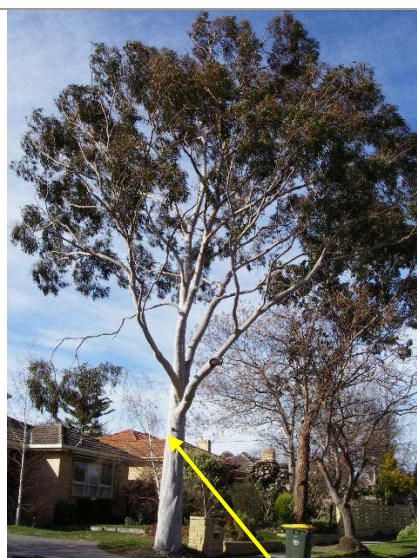
### Statement of Significance:

This tree is of good health and structure. It is close to the driveway and footpath but has caused minimal damage at this point. It contributes to the amenity of the area and as it is one of the tallest trees within the immediate area it should be included within the Significant Tree Register.

### Site map:



### Photo(s):



**The Lemon-scented Gum**

## CITY OF WHITEHORSE- STATEMENT OF TREE SIGNIFICANCE

**Property Address:** 7 Majtllis Street, Blackburn North

Melways Ref: 47 H6

Survey Dates: 14<sup>th</sup> February 2006

Tree No.	1	2	3
Tree Name	<i>Acer palmatum</i> Japanese Maple		
DBH	36 cm		
Height	5 metres		
Spread	9 metres		
Significance*	L		
Age (years)	~50 years		
Condition*	G		
Assets within 4 metres	None		
SULE	20-50 years		
Notes			

\* Significance: N-National, S-State, R-Regional, L- Local

\* Condition: E- Excellent, G-Good, F-Fair, P-Poor, D-Dead

### Criteria for Significance:

	Historical significance		Rare/Localised distribution		Horticultural/Genetic Value		Particularly old
	Curious growth form		Outstanding size	*	Outstanding Example of the Species		Unique environmental contribution
	Unique Location/Context	*	Aesthetic Value		Aboriginal Culture		

### Statement of Significance:

This is a fairly large Japanese Maple. It has not grown particularly tall but has a very wide spreading canopy for a tree of its size. It is located in the front of the property and contributes to the overall streetscape. Given its location at the front of the property and its wide canopy spread, this tree is worthy of inclusion within the Significant Tree Register.

### Site Map:



### Photo(s):



**The Japanese Maple**



## CITY OF WHITEHORSE- STATEMENT OF TREE SIGNIFICANCE

**Property Address:** 35 Middlefield Drive, Blackburn North

Melways Ref: 47 K5

Surveyed: 21<sup>st</sup> August 2006 (AJ)

Tree No.	1	2	3
Tree Name	<i>Eucalyptus melliodora</i> (x 9 trees) Yellow Box		
DBH	50-80 cm		
Height	16-20 metres		
Spread	10-16 metres		
Significance*	L		
Age (years)	Mature		
Condition*	G		
Assets within 4 metres	Dwelling near 1 tree and driveway near four trees.		
SULE	20-50 years		
Notes			

\* Significance: N-National, S-State, R-Regional, L- Local

\* Condition: E- Excellent, G-Good, F-Fair, P-Poor, D-Dead

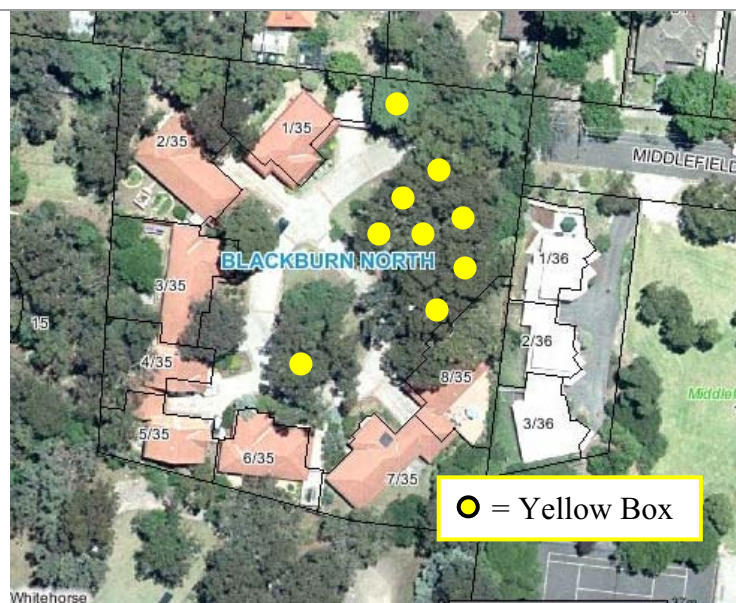
### Criteria for Significance:

	Historical significance		Rare/Localised distribution		Horticultural/Genetic Value		Particularly old
	Curious growth form		Outstanding size		Outstanding Example of the Species		Unique environmental contribution
	Unique Location/Context	*	Aesthetic Value		Aboriginal Culture	*	Good example of indigenous species

### Statement of Significance:

These trees are all suitable for inclusion. They are of reasonably good health and structure and they contribute to the overall habitat and character of the area. There are three to four trees outside some of the dwellings but these are too close and should not be included. This statement applies to the nine Yellow Box trees as marked on the photograph. There is some sign of stress in some of the trees.

### Site map:



Photo(s):





**Some of the Yellow Box**

## CITY OF WHITEHORSE- STATEMENT OF TREE SIGNIFICANCE

**Property Address: 2 Primrose Street, Blackburn North**

Melways Ref: 47 J6

Surveyed: 21<sup>st</sup> August 2006 (AJ)

Tree No.	1	2	3
Tree Name	<i>Corymbia maculata</i> Spotted Gum	<i>Corymbia maculata</i> Spotted Gum	<i>Corymbia maculata</i> Spotted Gum
DBH	50 cm	50 cm	50 cm
Height	14 metres	15 metres	16 metres
Spread	8 metres	8 metres	8 metres
Significance*	L	L	L
Age (years)	Mature	Mature	Mature
Condition*	G	G	G
Assets within 4 metres	Footpath and front brick wall	Footpath and front brick wall	Footpath and front brick wall
SULE	20-50 years	20-50 years	20-50 years
Notes			

\* Significance: N-National, S-State, R-Regional, L- Local

\* Condition: E- Excellent, G-Good, F-Fair, P-Poor, D-Dead

### Criteria for Significance:

	Historical significance		Rare/Localised distribution		Horticultural/Genetic Value		Particularly old
	Curious growth form		Outstanding size		Outstanding Example of the Species		Unique environmental contribution
	Unique Location/Context	*	Aesthetic Value		Aboriginal Culture		Good example of indigenous species

### Statement of Significance:

These trees are all of reasonably good health, form and structure. They contribute to the amenity of the streetscape in Primrose Street and form part of an avenue of Spotted Gums that are planted on the western side of this street. They are suitable for inclusion within the Significant Tree Register.

### Site map:



**Photo(s):**



**Trees #1 & 2**



**Tree #3**

## CITY OF WHITEHORSE- STATEMENT OF TREE SIGNIFICANCE

**Property Address:** 12 Primrose Street, Blackburn North

Melways Ref: 47 J6

Surveyed: 14<sup>th</sup> February 2006 (AJ)

Tree No.	1	2	3
Tree Name	<i>Corymbia maculata</i> Spotted Gum		
DBH	46 cm		
Height	18 metres		
Spread	10 metres		
Significance*	L		
Age (years)	Mature		
Condition*	G		
Assets within 4 metres	Footpath		
SULE	20-50 years		
Notes			

\* Significance: N-National, S-State, R-Regional, L- Local

\* Condition: E- Excellent, G-Good, F-Fair, P-Poor, D-Dead

### Criteria for Significance:

	Historical significance		Rare/Localised distribution		Horticultural/Genetic Value		Particularly old
	Curious growth form		Outstanding size		Outstanding Example of the Species		Unique environmental contribution
	Unique Location/Context	*	Aesthetic Value		Aboriginal Culture		Good example of indigenous species

### Statement of Significance:

This Spotted Gum is one of an avenue planted down the western side of Primrose Street. It contributes to the streetscape and together with other trees in the street forms a good avenue. It has required some pruning for clearance from the dwelling. It is of good health and structure and is worthy of inclusion.

### Site Map:



### Photo(s):



**The Spotted Gum**



## CITY OF WHITEHORSE- STATEMENT OF TREE SIGNIFICANCE

**Property Address: 18 Primrose Street, Blackburn North**

Melways Ref: 47 J7

Surveyed: 14<sup>th</sup> February 2006 (AJ)

Tree No.	1	2	3
Tree Name	<i>Eucalyptus mannifera</i> Red Spotted Gum	<i>Corymbia maculata</i> Spotted Gum	
DBH	42 cm	41 cm	
Height	13 metres	13 metres	
Spread	8 metres	8 metres	
Significance*	L	L	
Age (years)	Mature	Mature	
Condition*	G	G	
Assets within 4 metres	House	House	
SULE	20-50 years	20-50 years	
Notes			

\* Significance: N-National, S-State, R-Regional, L- Local

\* Condition: E- Excellent, G-Good, F-Fair, P-Poor, D-Dead

### Criteria for Significance:

	Historical significance		Rare/Localised distribution		Horticultural/Genetic Value		Particularly old
	Curious growth form		Outstanding size		Outstanding Example of the Species		Unique environmental contribution
	Unique Location/Context	*	Aesthetic Value		Aboriginal Culture		Good example of indigenous species

### Statement of Significance:

These two trees are part of an avenue of similar trees down the western side of Primrose Street. Most trees in the avenue are Spotted Gums, although one tree assessed on this property is a Red Spotted Gum. They have required some pruning for clearance from the dwelling but are of generally good health and structure. These trees are worthy of inclusion due to their contribution to the streetscape both individually and as part of the avenue planting.

### Site Map:



### Photo(s):



**Tree #1 & 2**

## CITY OF WHITEHORSE- STATEMENT OF TREE SIGNIFICANCE

**Property Address:** 26 Raymond Street, Blackburn North

Melways Ref: 48 A5

Surveyed: 1<sup>st</sup> August 2006 (AJ)

Tree No.	1	2	3
Tree Name	<i>Corymbia citriodora</i> Lemon-scented Gum		
DBH	56 cm		
Height	17 metres		
Spread	13 metres		
Significance*	L		
Age (years)	Mature		
Condition*	G		
Assets within 4 metres	None		
SULE	20-50 years		
Notes			

\* Significance: N-National, S-State, R-Regional, L- Local

\* Condition: E- Excellent, G-Good, F-Fair, P-Poor, D-Dead

### Criteria for Significance:

	Historical significance		Rare/Localised distribution		Horticultural/Genetic Value		Particularly old
	Curious growth form		Outstanding size		Outstanding Example of the Species		Unique environmental contribution
	Unique Location/Context	*	Aesthetic Value		Aboriginal Culture		Good example of indigenous species

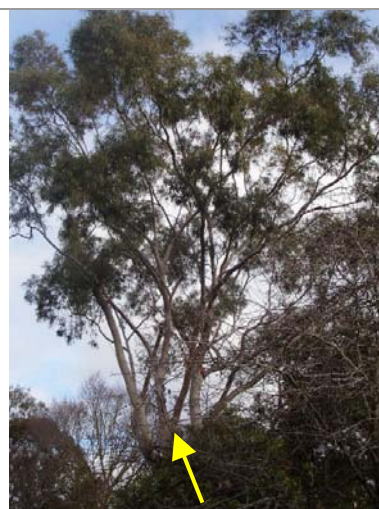
### Statement of Significance:

This tree is located in the rear yard but it is visible from the street and surrounding properties. It is of good health and structure. It has lost one large limb however the remainder of the tree appears sound and this has not detracted from the good form of the tree. This tree is suitable for inclusion due to its contribution to the wider landscape.

### Site map:



### Photo(s):



**The Lemon-scented Gum**

## CITY OF WHITEHORSE- STATEMENT OF TREE SIGNIFICANCE

**Property Address: 3 Renfrew Street, Blackburn North**

Melways Ref: 48 D5

Surveyed: 8<sup>th</sup> February 2006 (AJ)

Tree No.	1	2	3
Tree Name	<i>Eucalyptus elata</i> River Peppermint		
DBH	86 cm		
Height	22 metres		
Spread	18 metres		
Significance*	L		
Age (years)	Mature		
Condition*	G		
Assets within 4 metres	None		
SULE	20-50 years		
Notes	Located in rear corner.		

\* Significance: N-National, S-State, R-Regional, L- Local

\* Condition: E- Excellent, G-Good, F-Fair, P-Poor, D-Dead

### Criteria for Significance:

	Historical significance		Rare/Localised distribution		Horticultural/Genetic Value		Particularly old
	Curious growth form	*	Outstanding size	*	Outstanding Example of the Species		Unique environmental contribution
	Unique Location/Context	*	Aesthetic Value		Aboriginal Culture		Good example of indigenous species

### Statement of Significance:

This is a very large River Peppermint. It is visible from surrounding streets and contributes to the streetscape and overall canopy cover of the area. It is one of the tallest trees in the area. It is of good health and structure and is worthy of inclusion on the Significant Tree Register

### Site map:



### Photo(s):



**The River Peppermint**

## CITY OF WHITEHORSE- STATEMENT OF TREE SIGNIFICANCE

**Property Address: 7 Shafer Road, Blackburn North**

Melways Ref: 47 H6

Surveyed: 8<sup>th</sup> February 2006 (AJ)

Tree No.64	1	2	3
<b>Tree Name</b>	<i>Cedrus deodara</i> Deodar Cedar		
<b>DBH</b>	64 cm		
<b>Height</b>	14 metres		
<b>Spread</b>	14 metres		
<b>Significance*</b>	L		
<b>Age (years)</b>	~ 50 years		
<b>Condition*</b>	G		
<b>Assets within 4 metres</b>	None		
<b>SULE</b>	20-50 years		
<b>Notes</b>			

\* Significance: N-National, S-State, R-Regional, L- Local

\* Condition: E- Excellent, G-Good, F-Fair, P-Poor, D-Dead

### Criteria for Significance:

Historical significance		Rare/Localised distribution		Horticultural/Genetic Value		Particularly old
Curious growth form		Outstanding size		Outstanding Example of the Species		Unique environmental contribution
Unique Location/Context	*	Aesthetic Value		Aboriginal Culture		Good example of indigenous species

### Statement of Significance:

This tree is of good health and structure. It has a single leader and all branch attachments are good. The property owner planted it approximately 45 years ago. It is planted at the front of the property and contributes directly to the overall streetscape. It is worthy of inclusion on the Significant Tree Register.

### Site Map:



### Photo(s):



**The Deodar Cedar**



## CITY OF WHITEHORSE- STATEMENT OF TREE SIGNIFICANCE

**Property Address: 70 Shafer Road, Blackburn North**

Melways Ref: 47 J6

Surveyed: 9<sup>th</sup> February 2006 (AJ)

Tree No.	1	2	3
Tree Name	<i>Eucalyptus mannifera</i> Red Spotted Gum		
DBH	63 cm		
Height	15 metres		
Spread	14 metres		
Significance*	L		
Age (years)	Mature		
Condition*	G		
Assets within 4 metres	None		
SULE	20-50 years		
Notes			

\* Significance: N-National, S-State, R-Regional, L- Local

\* Condition: E- Excellent, G-Good, F-Fair, P-Poor, D-Dead

### Criteria for Significance:

	Historical significance		Rare/Localised distribution		Horticultural/Genetic Value		Particularly old
	Curious growth form		Outstanding size		Outstanding Example of the Species		Unique environmental contribution
	Unique Location/Context	*	Aesthetic Value		Aboriginal Culture		Good example of indigenous species

### Statement of Significance:

This tree is of good health and structure. It is located close to the property boundary and contributes to the streetscape. It has a long life expectancy and is worthy of inclusion within the Significant Tree Register.

### Site Map:



### Photo(s):



**The Red Spotted Gum**

## CITY OF WHITEHORSE- STATEMENT OF TREE SIGNIFICANCE

**Property Address:** Unit 1, 2 Slater Avenue, Blackburn North

Melways Ref: 48 C5

Surveyed: 8<sup>th</sup> February 2006 (AJ)

Tree No.	1	2	3
Tree Name	<i>Eucalyptus camaldulensis</i> River Red Gum		
DBH	55 cm		
Height	22 metres		
Spread	9 metres		
Significance*	L		
Age (years)	Mature		
Condition*	G		
Assets within 4 metres	Dwelling		
SULE	20-50 years		
Notes			

\* Significance: N-National, S-State, R-Regional, L- Local

\* Condition: E- Excellent, G-Good, F-Fair, P-Poor, D-Dead

### Criteria for Significance:

	Historical significance		Rare/Localised distribution		Horticultural/Genetic Value		Particularly old
	Curious growth form		Outstanding size		Outstanding Example of the Species		Unique environmental contribution
	Unique Location/Context	*	Aesthetic Value		Aboriginal Culture	*	Good example of indigenous species

### Statement of Significance:

This tree is an indigenous species. It is tall and of good health and structure. There is some minor wounding on the main stem but generally it appears sound. This tree is important in forming a habitat corridor along this area and should be included within the Significant Tree Register.

### Site map:



### Photo(s):



**Tree #1**

## CITY OF WHITEHORSE- STATEMENT OF TREE SIGNIFICANCE

**Property Address: 1 Slater Avenue, Blackburn North**

Melways Ref: 48 C5

Surveyed: 18<sup>th</sup> August 2006 (AJ)

Tree No.	1	2	3	4
Tree Name	<i>Eucalyptus melliodora</i> Yellow Box	<i>Eucalyptus melliodora</i> Yellow Box	<i>Eucalyptus melliodora</i> Yellow Box	<i>Eucalyptus melliodora</i> Yellow Box
DBH	67 cm	58 cm	45 cm	56 cm
Height	20 metres	18 metres	18 metres	20 metres
Spread	14 metres	12 metres	9 metres	12 metres
Significance*	L	L	L	L
Age (years)	Mature	Mature	Mature	Mature
Condition*	G	G	G	G
Assets within 4 metres	Footpath	None	None	None
SULE	20-50 years	20-50 years	20-50 years	20-50 years
Notes				

\* Significance: N-National, S-State, R-Regional, L- Local

\* Condition: E- Excellent, G-Good, F-Fair, P-Poor, D-Dead

### Criteria for Significance:

Historical significance		Rare/Localised distribution		Horticultural/Genetic Value		Particularly old
Curious growth form		Outstanding size		Outstanding Example of the Species	*	Unique environmental contribution
Unique Location/Context	*	Aesthetic Value		Aboriginal Culture	*	Good example of indigenous species

### Statement of Significance:

These trees are located within the common property at 1 Slater Avenue. They are all of good health and reasonably good structure. They contribute to the character of this area that is dominated by larger indigenous trees located in private yards and in freeway reserve to the north. They are suitable for inclusion within the Significant Tree Register.

### Site map:



**Photo(s):**



**Tree #1**



**Tree #2**



**Tree #3**



**Tree #4**



## CITY OF WHITEHORSE- STATEMENT OF TREE SIGNIFICANCE

**Property Address:** Unit 2, 2 Slater Avenue, Blackburn North

Melways Ref: 48 C5

Surveyed: 8<sup>th</sup> February 2006 (AJ)

Tree No.	1	2	3
Tree Name	<i>Eucalyptus melliodora</i> Yellow Box		
DBH	59 cm		
Height	19 metres		
Spread	16 metres		
Significance*	L		
Age (years)	Mature		
Condition*	G		
Assets within 4 metres	Neighbours carport		
SULE	20-50 years		
Notes			

\* Significance: N-National, S-State, R-Regional, L- Local

\* Condition: E- Excellent, G-Good, F-Fair, P-Poor, D-Dead

### Criteria for Significance:

	Historical significance		Rare/Localised distribution		Horticultural/Genetic Value		Particularly old
	Curious growth form		Outstanding size		Outstanding Example of the Species		Unique environmental contribution
	Unique Location/Context	*	Aesthetic Value		Aboriginal Culture	*	Good example of indigenous species

### Statement of Significance:

This tree is an indigenous species. It is located close to the driveway of the property. It is large in size and contributes to the amenity of the surrounding area. It forms part of the habitat corridor and therefore is suitable for inclusion.

### Site map:



### Photo(s):



**The Yellow Box**

## CITY OF WHITEHORSE- STATEMENT OF TREE SIGNIFICANCE

**Property Address:** 5 Slater Avenue, Blackburn North

Melways Ref: 45 C5

Surveyed: 8<sup>th</sup> February 2006 (AJ)

Tree No.	1	2	3
Tree Name	<i>Eucalyptus melliodora</i> Yellow Box		
DBH	58 cm		
Height	18 metres		
Spread	15 metres		
Significance*	L		
Age (years)	Mature		
Condition*	G		
Assets within 4 metres	Dwelling at ~3 metres		
SULE	20-50 years		
Notes			

\* Significance: N-National, S-State, R-Regional, L- Local

\* Condition: E- Excellent, G-Good, F-Fair, P-Poor, D-Dead

### Criteria for Significance:

	Historical significance		Rare/Localised distribution		Horticultural/Genetic Value		Particularly old
	Curious growth form		Outstanding size		Outstanding Example of the Species		Unique environmental contribution
	Unique Location/Context	*	Aesthetic Value		Aboriginal Culture	*	Good example of indigenous species

### Statement of Significance:

Tree #1 is located in the rear of the property. It is a large tree of good health and structure that contributes to the amenity of the surrounding areas and is an important tree for habitat. A large Lemon Scented Gum was not assessed or included due to significant structural defects present.

### Site Map:



### Photo(s):



**The Yellow Box**

## CITY OF WHITEHORSE- STATEMENT OF TREE SIGNIFICANCE

**Property Address:** 7 Slater Avenue, Blackburn North

Melways Ref: 48 C5

Surveyed: 8<sup>th</sup> February 2006 (AJ)

Tree No.	1	2	3
Tree Name	<i>Eucalyptus melliodora</i> Yellow Box	<i>Corymbia citriodora</i> Lemon-scented Gum	
DBH	34 cm	39 cm	
Height	15 metres	20 metres	
Spread	9 metres	13 metres	
Significance*	L	L	
Age (years)	Mature	40 years	
Condition*	F	G	
Assets within 4 metres	No	Water metre	
SULE	20-50 years	20-50 years	
Notes			

\* Significance: N-National, S-State, R-Regional, L- Local

\* Condition: E- Excellent, G-Good, F-Fair, P-Poor, D-Dead

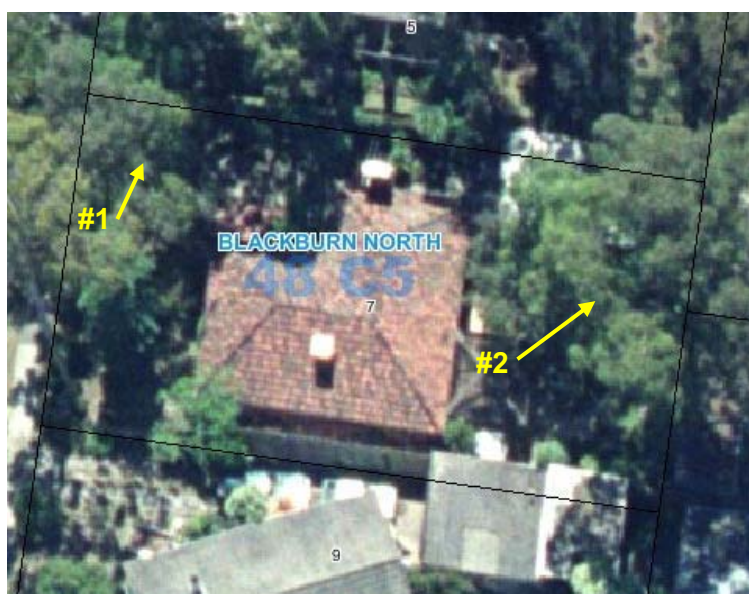
### Criteria for Significance:

	Historical significance		Rare/Localised distribution		Horticultural/Genetic Value		Particularly old
	Curious growth form		Outstanding size		Outstanding Example of the Species		Unique environmental contribution
	Unique Location/Context	*	Aesthetic Value		Aboriginal Culture	*	Good example of indigenous species

### Statement of Significance:

Tree #1 is a medium sized Yellow Box. It is of good health and structure and contributes to the streetscape of the area. Being an indigenous tree of good health, it is also important in order to maintain indigenous habitat. Tree #2 is a tall Lemon-scented Gum planted by the current owners of the property around 40 years ago. It is visible from surrounding streets and contributes to the streetscape. Both trees #1 and 2 warrant inclusion on the Significant Tree Register.

### Site Map:





**Tree #1**



**Tree #2**



## CITY OF WHITEHORSE- STATEMENT OF TREE SIGNIFICANCE

**Property Address: 19 Slater Avenue, Blackburn North**

Melways Ref: 48 C5

Surveyed: 8<sup>th</sup> February 2006 (AJ)

Tree No.	1	2	3
<b>Tree Name</b>	<i>Corymbia citriodora</i> Lemon-Scented Gum		
<b>DBH</b>	89 cm		
<b>Height</b>	14 metres		
<b>Spread</b>	19 metres		
<b>Significance*</b>	L		
<b>Age (years)</b>	Mature		
<b>Condition*</b>	Fair to good		
<b>Assets within 4 metres</b>	Dwelling at ~4 metres		
<b>SULE</b>	20-50 years		
<b>Notes</b>			

\* Significance: N-National, S-State, R-Regional, L- Local

\* Condition: E- Excellent, G-Good, F-Fair, P-Poor, D-Dead

### Criteria for Significance:

	Historical significance		Rare/Localised distribution		Horticultural/Genetic Value		Particularly old
	Curious growth form	*	Outstanding size		Outstanding Example of the Species		Unique environmental contribution
	Unique Location/Context	*	Aesthetic Value		Aboriginal Culture		Good example of indigenous species

### Statement of Significance:

This is a large, old, wide-spreading Lemon-scented Gum. It lost a large limb approximately five years ago that has left a large wound near the base. There is good woundwood growth present. This tree is bifurcated at the base. There was minor cracking present at the union – this was only within the bark and not within the structural wood. It could be pruned in order to safely retain this tree. It is unlikely that the tree would fail at the union but cabling would further minimise the risk. It contributes to the amenity and streetscape and is a significant tree to the local area.

### Site map:



**Photo(s):**



**The Lemon-scented Gum**



**The base of the Lemon-scented Gum**

## CITY OF WHITEHORSE- STATEMENT OF TREE SIGNIFICANCE

**Property Address: 23 Springfield Road, Blackburn North**

Melways Ref: 47 H7

Surveyed: 6<sup>th</sup> October 2006 (AJ)

Tree No.	1	2	3
Tree Name	<i>Eucalyptus melliodora</i> Yellow Box		
DBH	50 cm		
Height	18 metres		
Spread	12 metres		
Significance*	L		
Age (years)	Mature		
Condition*	G		
Assets within 4 metres	None		
SULE	20-50 years		
Notes			

\* Significance: N-National, S-State, R-Regional, L- Local

\* Condition: E- Excellent, G-Good, F-Fair, P-Poor, D-Dead

### Criteria for Significance:

	Historical significance		Rare/Localised distribution		Horticultural/Genetic Value		Particularly old
	Curious growth form		Outstanding size		Outstanding Example of the Species		Unique environmental contribution
	Unique Location/Context	*	Aesthetic Value		Aboriginal Culture	*	Good example of indigenous species

### Statement of Significance:

This tree is located in the rear of the property. It is of good health and structure. It is visible from Springfield Road and contributes to the amenity of the wider landscape. It is suitable for inclusion within the Significant Tree Register.

### Site map:



### Photo(s):





## CITY OF WHITEHORSE- STATEMENT OF TREE SIGNIFICANCE

**Property Address: 33 Springfield Road, Blackburn North**

Melways Ref: 47 J7

Surveyed: 14<sup>th</sup> February 2006 (AJ)

Tree No.	1	2	3
Tree Name	<i>Eucalyptus radiata</i> x 2 Narrow-leaved Peppermint		
DBH	43 & 57 cm		
Height	12 metres		
Spread	10 metres		
Significance*	L		
Age (years)	Mature		
Condition*	G		
Assets within 4 metres	Footpath		
SULE	10-20 years		
Notes			

\* Significance: N-National, S-State, R-Regional, L- Local

\* Condition: E- Excellent, G-Good, F-Fair, P-Poor, D-Dead

### Criteria for Significance:

	Historical significance		Rare/Localised distribution		Horticultural/Genetic Value		Particularly old
	Curious growth form		Outstanding size		Outstanding Example of the Species		Unique environmental contribution
	Unique Location/Context	*	Aesthetic Value		Aboriginal Culture	*	Good example of indigenous species

### Statement of Significance:

These two trees are of good health and structure. They are an indigenous species. They contribute directly to the streetscape on Springfield Road where there is limited space to develop large street trees within the naturestrip. Given their location and size, and that they are indigenous, these trees should be included in the Significant Tree Register.

### Site Map:



### Photo(s):



**Trees #1**



## CITY OF WHITEHORSE- STATEMENT OF TREE SIGNIFICANCE

**Property Address:** 171A Springfield Road, Blackburn North

Melways Ref: 48 B7

Surveyed: 16<sup>th</sup> August 2006 (AJ)

Tree No.	1	2	3
Tree Name	<i>Corymbia citriodora</i> Lemon-scented Gum		
DBH	67 cm		
Height	13 metres		
Spread	14 metres		
Significance*	L		
Age (years)	Mature		
Condition*	G		
Assets within 4 metres	None		
SULE	20-50 years		
Notes			

\* Significance: N-National, S-State, R-Regional, L- Local

\* Condition: E- Excellent, G-Good, F-Fair, P-Poor, D-Dead

### Criteria for Significance:

	Historical significance		Rare/Localised distribution		Horticultural/Genetic Value		Particularly old
	Curious growth form		Outstanding size		Outstanding Example of the Species		Unique environmental contribution
	Unique Location/Context	*	Aesthetic Value		Aboriginal Culture		Good example of indigenous species

### Statement of Significance:

Tree #1 is of good health and structure. It is visible from Springfield Road and contributes directly to the streetscape and amenity of the area. It is suitable for inclusion within the Significant Tree Register.

### Site map:



### Photo(s):



**Tree #1**

## CITY OF WHITEHORSE- STATEMENT OF TREE SIGNIFICANCE

**Property Address: 233 Springfield Road, Blackburn North**

Melways Ref: 48 C7

Surveyed: 14<sup>th</sup> February 2006 (AJ)

Tree No.	1	2	3
Tree Name	<i>Quercus robur</i> English Oak		
DBH	63 cm		
Height	13 metres		
Spread	16 metres		
Significance*	L		
Age (years)	Mature		
Condition*	G		
Assets within 4 metres	Footpath		
SULE	20-50 years		
Notes			

\* Significance: N-National, S-State, R-Regional, L- Local

\* Condition: E- Excellent, G-Good, F-Fair, P-Poor, D-Dead

### Criteria for Significance:

*	Historical significance		Rare/Localised distribution		Horticultural/Genetic Value		Particularly old
	Curious growth form		Outstanding size		Outstanding Example of the Species		Unique environmental contribution
	Unique Location/Context	*	Aesthetic Value		Aboriginal Culture		Good example of indigenous species

### Statement of Significance:

This is a mature Oak that is located at the front of the property. It is of good health and structure and contributes to the amenity and streetscape of this area. It was grown from an acorn collected from Windsor Castle (United Kingdom) and therefore has some level of historical significance.

### Site Map:



### Photo(s):



**The English Oak**

## CITY OF WHITEHORSE- STATEMENT OF TREE SIGNIFICANCE

**Property Address:** 77 Surrey Road, Blackburn North

Melways Ref: 48 B6

Surveyed: 17<sup>th</sup> February 2006 (AJ)

Tree No.	1	2	3
Tree Name	<i>Eucalyptus melliodora</i> Yellow Box		
DBH	55 cm		
Height	18 metres		
Spread	10 metres		
Significance*	L		
Age (years)	Mature		
Condition*	G		
Assets within 4 metres	None		
SULE	20-50 years		
Notes			

\* Significance: N-National, S-State, R-Regional, L- Local

\* Condition: E- Excellent, G-Good, F-Fair, P-Poor, D-Dead

### Criteria for Significance:

Historical significance	Rare/Localised distribution	Horticultural/Genetic Value	Particularly old
Curious growth form	Outstanding size	Outstanding Example of the Species	Unique environmental contribution
Unique Location/Context	Aesthetic Value	Aboriginal Culture	* Good example of indigenous species

### Statement of Significance:

Tree #1 is of good health and structure. It is located at the rear of the property and is worthy of inclusion. It contributes to the overall canopy cover of an area that has few trees due to medium density housing.

### Site Map:



### Photo(s):



**Tree #1**

## CITY OF WHITEHORSE- STATEMENT OF TREE SIGNIFICANCE

**Property Address: 80 Surrey Road, Blackburn North**

Melways Ref: 48 B6

Surveyed: 21<sup>st</sup> August 2006 (AJ)

Tree No.	1	2	3
Tree Name	<i>Quercus robur</i> English Oak	<i>Quercus robur</i> English Oak	
DBH	88 cm	~80 cm	
Height	14 metres	15 metres	
Spread	16 metres	~16 metres	
Significance*	L	L	
Age (years)	Mature	Mature	
Condition*	G	G	
Assets within 4 metres	Water meter	None	
SULE	20-50 years	20-50 years	
Notes		Assessment done from driveway therefore measures are estimates.	

\* Significance: N-National, S-State, R-Regional, L- Local

\* Condition: E- Excellent, G-Good, F-Fair, P-Poor, D-Dead

### Criteria for Significance:

Historical significance		Rare/Localised distribution		Horticultural/Genetic Value		Particularly old
Curious growth form		Outstanding size		Outstanding Example of the Species		Unique environmental contribution
Unique Location/Context	*	Aesthetic Value		Aboriginal Culture		Good example of indigenous species

### Statement of Significance:

These two trees are of good health and structure and are visible from both Surrey and Harcourt Roads. They have a wide canopy spread and contribute to the amenity and canopy cover of the area. They are both suitable for inclusion within the Significant Tree Register. Tree #2 was assessed from the driveway, access is required to confirm DBH and spread measurements.

### Site map:





**Photo(s):**



**Tree #1**



**Tree #2**

## CITY OF WHITEHORSE- STATEMENT OF TREE SIGNIFICANCE

**Property Address: 91-93 Surrey Road, Blackburn North**

Melways Ref: 48 B6

Surveyed: 14<sup>th</sup> February 2006 (AJ)

Tree No.	3	4
Tree Name	<i>Eucalyptus melliodora</i> (x3) Yellow Box	<i>Eucalyptus macrorhyncha</i> Red Stringybark
DBH	45-50cm	51 cm
Height	18-22 metres	16 metres
Spread	10-16 metres	12 metres
Significance*	L	L
Age (years)	Mature	Mature
Condition*	G	G
Assets within 4 metres	Driveway	None
SULE	10-20 years	20-50 years
Notes		

\* Significance: N-National, S-State, R-Regional, L- Local

\* Condition: E- Excellent, G-Good, F-Fair, P-Poor, D-Dead

### Criteria for Significance:

	Historical significance		Rare/Localised distribution		Horticultural/Genetic Value		Particularly old
	Curious growth form		Outstanding size		Outstanding Example of the Species		Unique environmental contribution
	Unique Location/Context	*	Aesthetic Value		Aboriginal Culture	*	Good example of indigenous species

### Statement of Significance:

Trees #3 are three mature Yellow Box. They are located in the middle of the property. They are of good health and structure and are important habitat trees. Given their location, it is expected that they would be suitable for retention for sometime and are therefore suitable for inclusion. Tree #4 is growing amongst trees #3, is of good health and structure and is also suitable for inclusion.

### Site Map:



**Photo(s):**



**Trees #3**



**Tree #3 & 4**

## CITY OF WHITEHORSE- STATEMENT OF TREE SIGNIFICANCE

**Property Address: 95 Surrey Road, Blackburn North**

Melways Ref: 48 B6

Surveyed: 17<sup>th</sup> February 2006 (AJ)

Tree No.	1	2	3
Tree Name	<i>Eucalyptus melliodora</i> Yellow Box	<i>Quercus robur</i> English Oak	
DBH	52+31 cm	57 cm	
Height	16 metres	14 metres	
Spread	12 metres	14 metres	
Significance*	L	L	
Age (years)	Mature	Mature	
Condition*	G	G	
Assets within 4 metres	None	None	
SULE	20-50 years	20-50 years	
Notes			

\* Significance: N-National, S-State, R-Regional, L- Local

\* Condition: E- Excellent, G-Good, F-Fair, P-Poor, D-Dead

### Criteria for Significance:

	Historical significance		Rare/Localised distribution		Horticultural/Genetic Value		Particularly old
	Curious growth form		Outstanding size		Outstanding Example of the Species		Unique environmental contribution
	Unique Location/Context	*	Aesthetic Value		Aboriginal Culture	*	Good example of indigenous species

### Statement of Significance:

Tree #1 has two main leaders. These leaders join at the base and appear sound. This tree contributes to the overall amenity of the area and is visible from other properties and the main road. Tree #1 is worthy of inclusion as it is an indigenous tree of good health and structure. Tree #2 is an English Oak of good health and structure. It contributes significantly to the overall canopy cover of the area. It has two main leaders that originate at ~6 metres. This tree is worthy of inclusion due to its large canopy and contribution to the overall landscape of this area.

### Site Map:





**Photo(s):**



**Tree #1**



**Tree #2**

# CITY OF WHITEHORSE- STATEMENT OF TREE SIGNIFICANCE

Property Address: 103 Surrey Road, Blackburn North

Melways Ref: 48 B7

Surveyed: N/A

Tree No.	1	2	3	4
Tree Name	<i>Eucalyptus leucoxylon</i> Yellow Gum	<i>Eucalyptus leucoxylon</i> Yellow Gum	<i>Eucalyptus leucoxylon</i> Yellow Gum	<i>Eucalyptus leucoxylon</i> Yellow Gum
DBH				
Height	20m	20m	20m	20m
Spread	12m	12m	12m	12m
Significance*	L	L	L	L
Age (years)				
Condition*	F	F	F	F
Assets within 4 metres				
SULE				
Notes				

\* Significance: N-National, S-State, R-Regional, L- Local

\* Condition: E- Excellent, G-Good, F-Fair, P-Poor, D-Dead

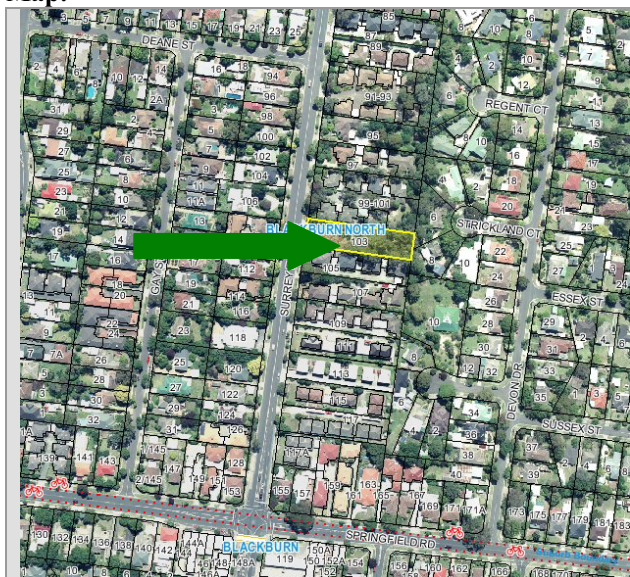
## Criteria for Significance:

Historical significance		Rare/Localised distribution		Horticultural/Genetic Value		Particularly old
Curious growth form	*	Outstanding size		Outstanding Example of the Species		Unique environmental contribution
Unique Location/Context	*	Aesthetic Value		Aboriginal Culture		Good example of indigenous species

## Statement of Significance:

The trees are large Eucalypts that dominate the rear yard of the property and are visible from surrounding streets, contributing to the overall landscape and amenity of the area.

## Map:



## Photo(s):

## CITY OF WHITEHORSE- STATEMENT OF TREE SIGNIFICANCE

**Property Address: 105 Surrey Road, Blackburn North**

Melways Ref: 48 B7

Surveyed: 17<sup>th</sup> August 2006 (AJ)

Tree No.	1	2	3
Tree Name	<i>Corymbia citriodora</i> Lemon-scented Gum		
DBH	50 cm		
Height	15 metres		
Spread	14 metres		
Significance*	L		
Age (years)	20 years		
Condition*	G		
Assets within 4 metres	Driveway		
SULE	20-50 years		
Notes			

\* Significance: N-National, S-State, R-Regional, L- Local

\* Condition: E- Excellent, G-Good, F-Fair, P-Poor, D-Dead

### Criteria for Significance:

	Historical significance		Rare/Localised distribution		Horticultural/Genetic Value		Particularly old
	Curious growth form		Outstanding size		Outstanding Example of the Species		Unique environmental contribution
	Unique Location/Context	*	Aesthetic Value		Aboriginal Culture		Good example of indigenous species

### Statement of Significance:

Tree #1 is located at the front of the site in common property. It is of good health and structure and contributes directly to the streetscape of Surrey Road. There was minor lifting of the driveway. This tree is suitable for inclusion within the Significant Tree Register.

### Site map:



### Photo(s):



**Tree #1**