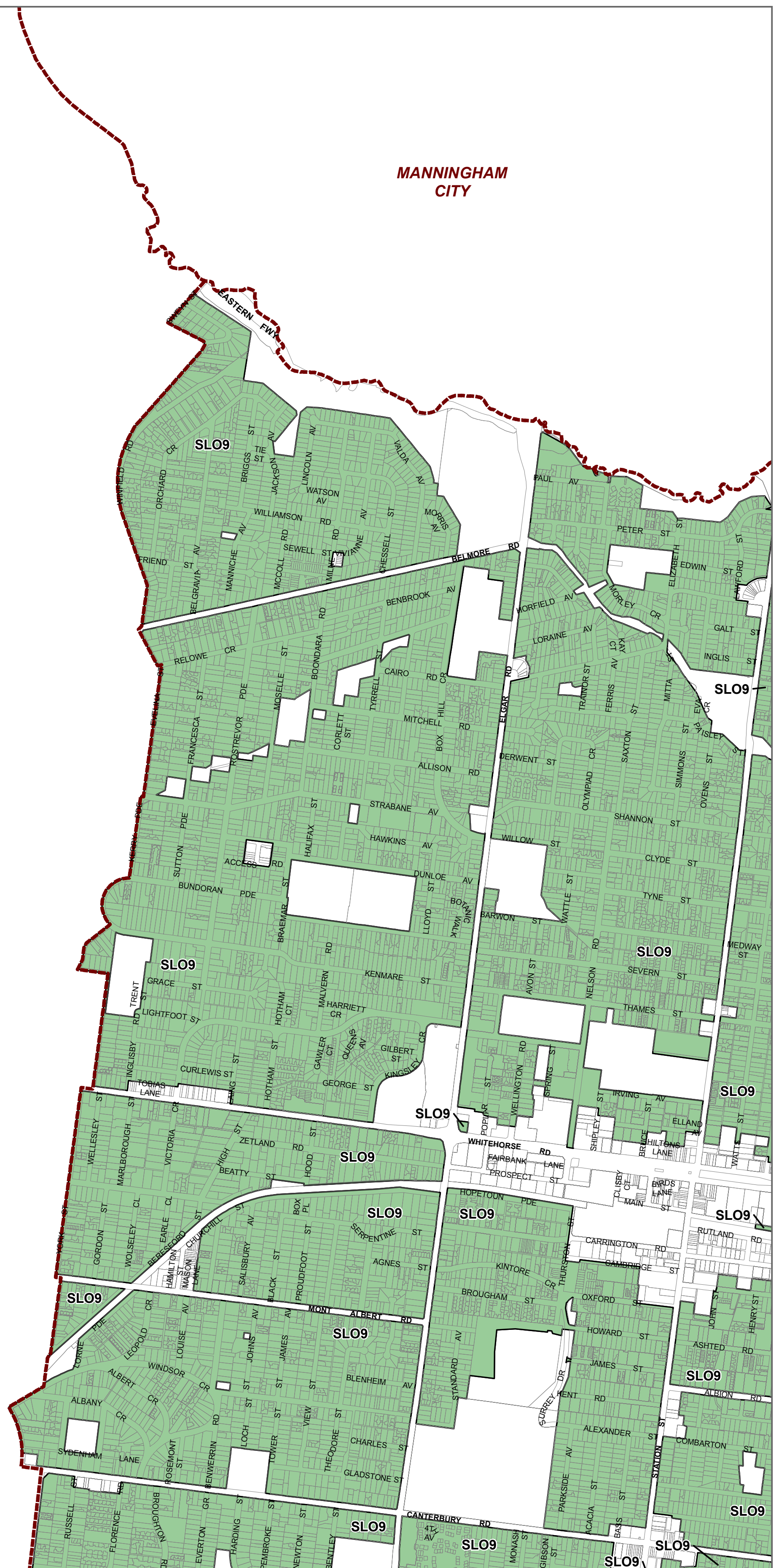


WHITEHORSE PLANNING SCHEME - LOCAL PROVISION AMENDMENT C219



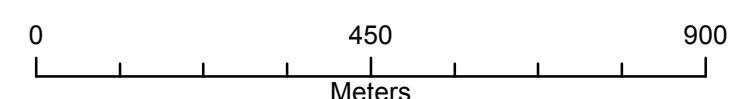
LEGEND

 SLO9 - Significant Landscape Overlay - Schedule 9



Disclaimer
This publication may be of assistance to you but the State of Victoria and its employees do not guarantee that the publication is without flaw of any kind or is wholly appropriate for your particular purposes and therefore disclaims all liability for any error, loss or other consequence which may arise from you relying on any information in this publication.

© The State of Victoria Department of Environment, Land, Water and Planning 2018



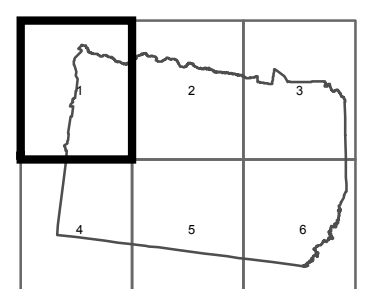
Planning Group

Printed: 3/04/2019

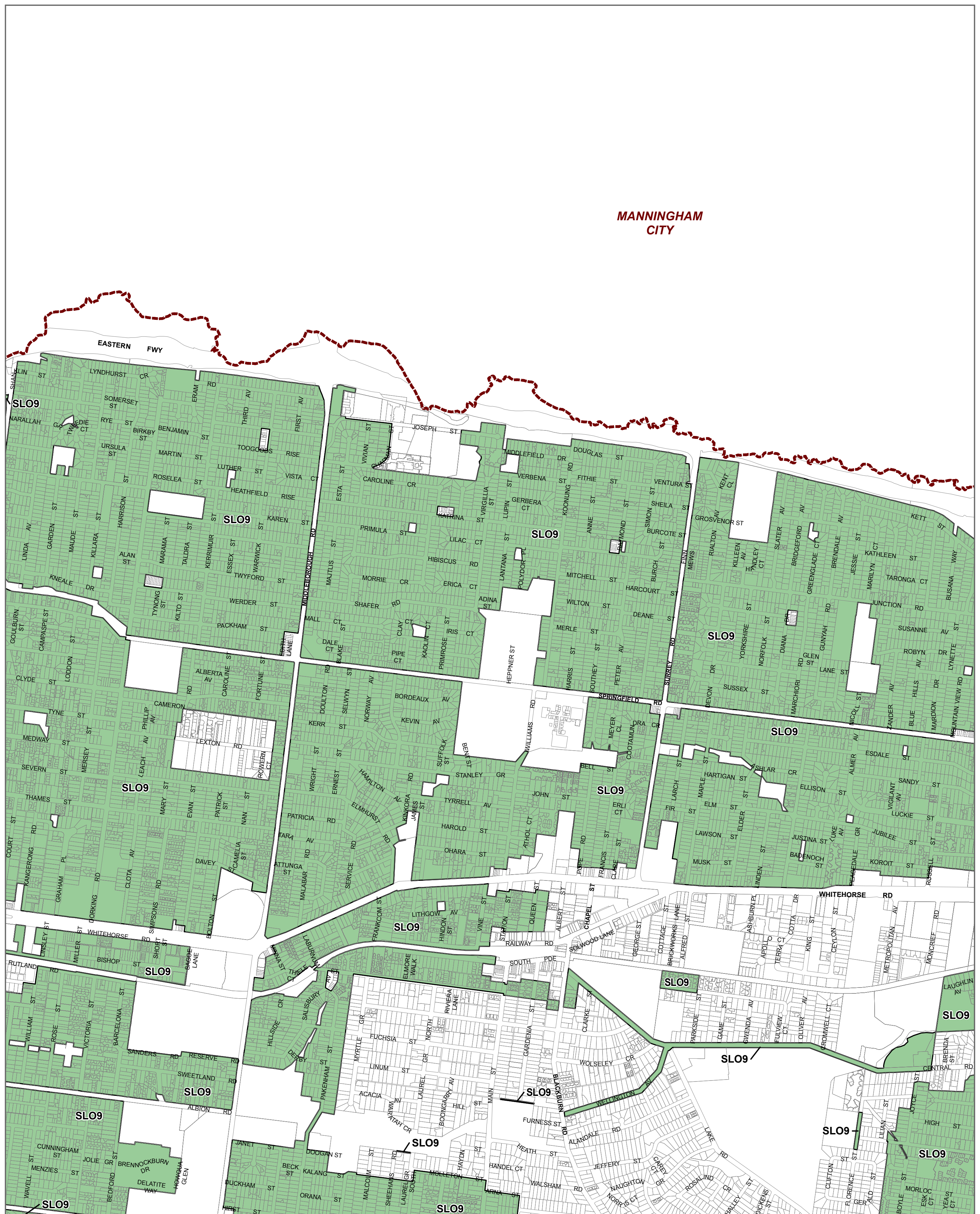


Environment,
Land, Water
and Planning

INDEX TO ADJOINING SCHEME MAPS



**WHITEHORSE PLANNING SCHEME - LOCAL PROVISION
AMENDMENT C219**



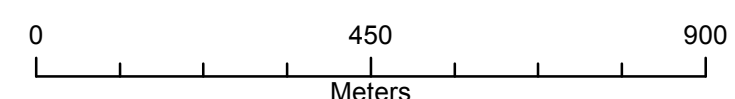
LEGEND

 SLO9 - Significant Landscape Overlay - Schedule 9



Disclaimer
This publication may be of assistance to you but the State of Victoria and its employees do not guarantee that the publication is without flaw of any kind or is wholly appropriate for your particular purposes and therefore disclaims all liability for any error, loss or other consequence which may arise from you relying on any information in this publication.

© The State of Victoria Department of Environment, Land, Water and Planning 2018



Australian Map Grid Zone 55



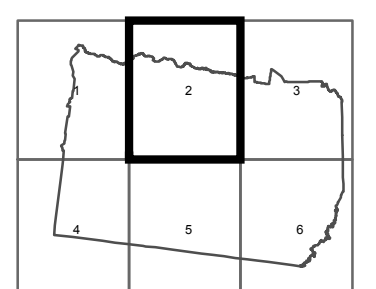
Planning Group

Printed: 3/04/2019

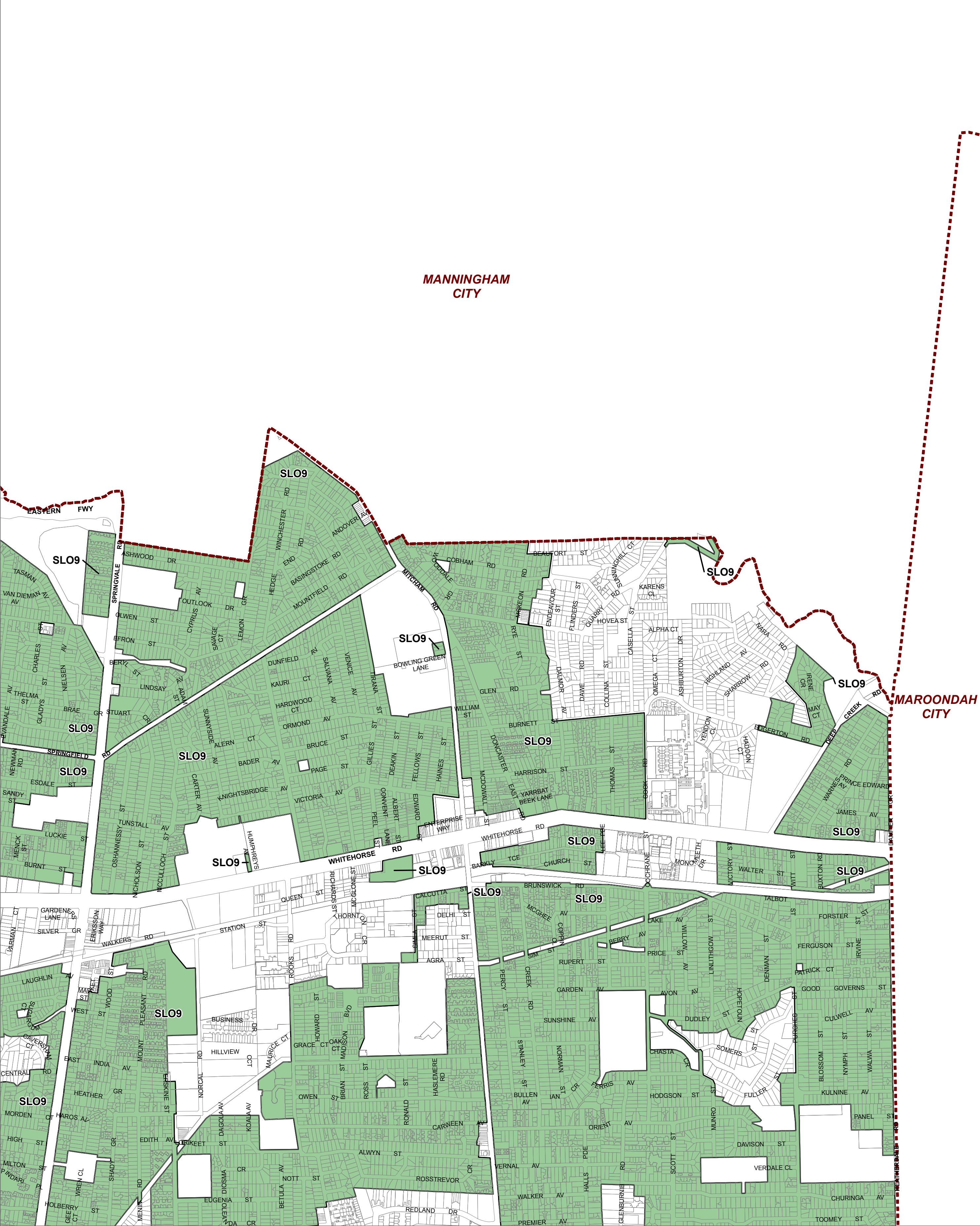


Environment,
Land, Water
and Planning

INDEX TO ADJOINING SCHEME MAPS



WHITEHORSE PLANNING SCHEME - LOCAL PROVISION
AMENDMENT C219



LEGEND

SLO9 - Significant Landscape Overlay - Schedule 9

Municipal Boundary

Disclaimer

This publication may be of assistance to you but the State of Victoria and its employees do not guarantee that the publication is without flaw of any kind or is wholly appropriate for your particular purposes and therefore disclaims all liability for any error, loss or other consequence which may arise from you relying on any information in this publication.

© The State of Victoria Department of Environment, Land, Water and Planning 2018

0 450 900

Meters

Australian Map Grid Zone 55

NORTH

Planning Group

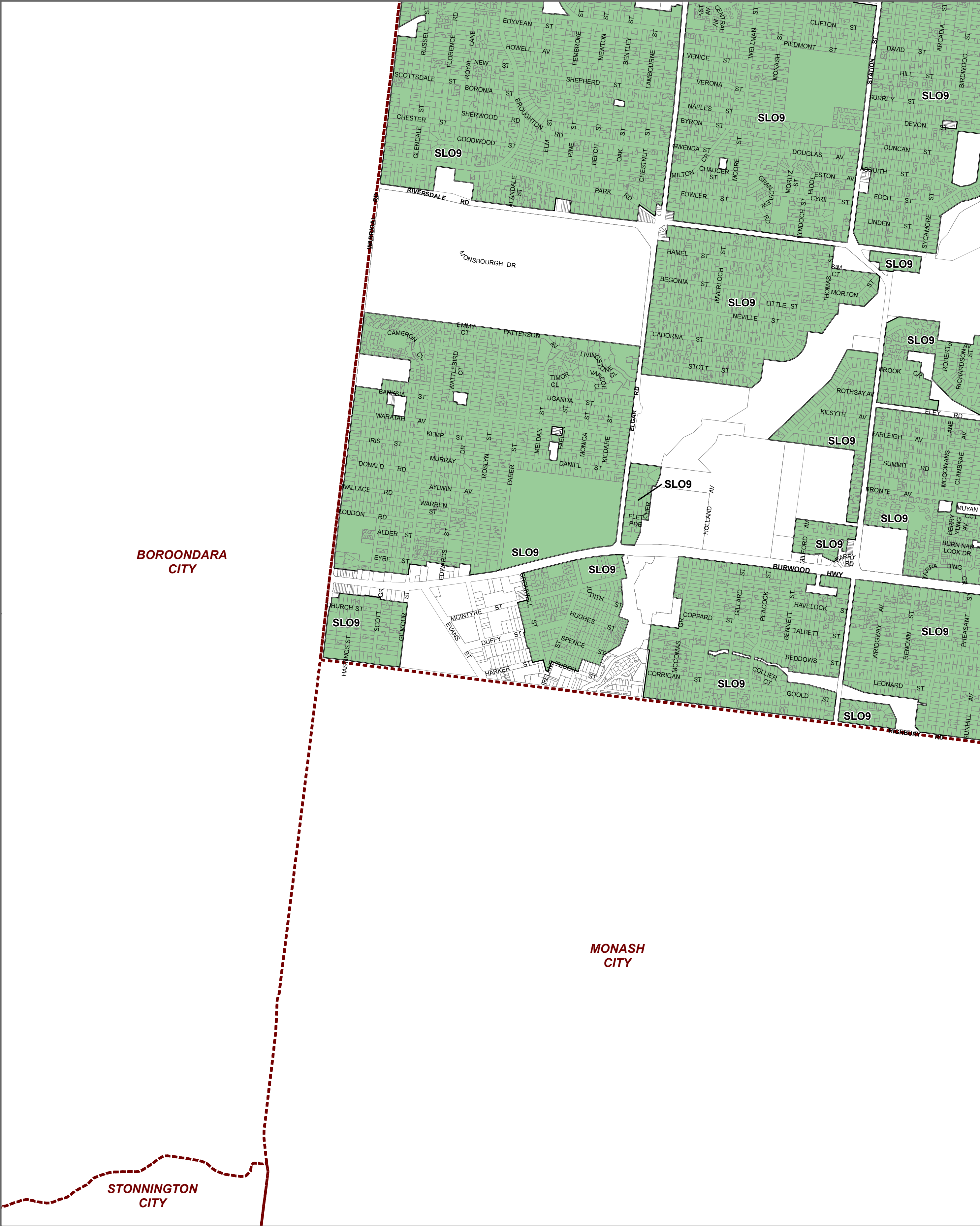
Printed: 3/04/2019

VICTORIA State Government

Environment, Land, Water and Planning

INDEX TO ADJOINING SCHEME MAPS

WHITEHORSE PLANNING SCHEME - LOCAL PROVISION
AMENDMENT C219



LEGEND

SLO9 - Significant Landscape Overlay - Schedule 9

Municipal Boundary

Disclaimer

This publication may be of assistance to you but the State of Victoria and its employees do not guarantee that the publication is without flaw of any kind or is wholly appropriate for your particular purposes and therefore disclaims all liability for any error, loss or other consequence which may arise from you relying on any information in this publication.

© The State of Victoria Department of Environment, Land, Water and Planning 2018

0 450 900

Meters

Australian Map Grid Zone 55

NORTH

Planning Group

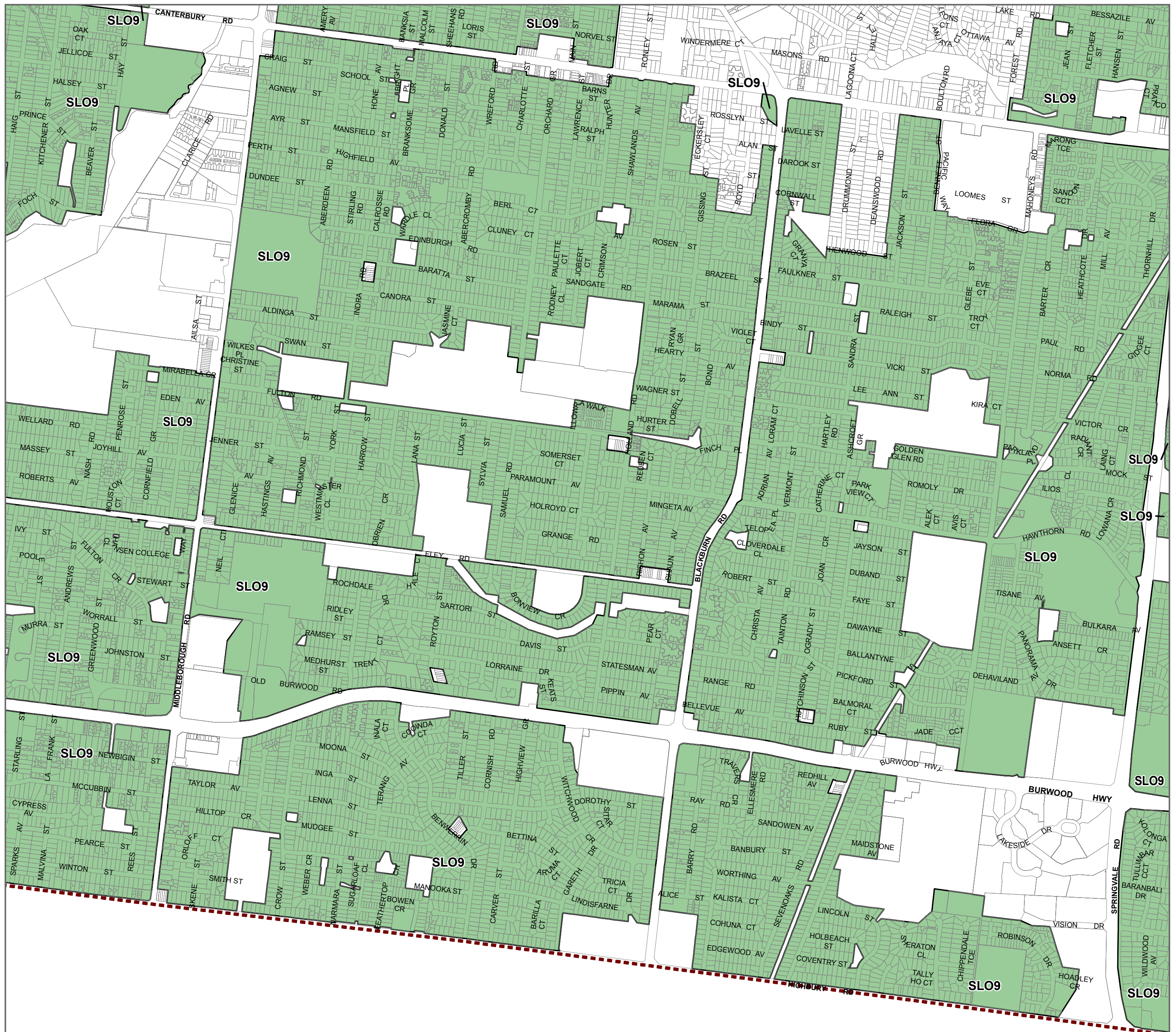
Printed: 3/04/2019

VICTORIA State Government

Environment, Land, Water and Planning

INDEX TO ADJOINING SCHEME MAPS

**WHITEHORSE PLANNING SCHEME - LOCAL PROVISION
AMENDMENT C219**



**MONASH
CITY**

LEGEND

 SLO9 - Significant Landscape Overlay - Schedule 9



Disclaimer
This publication may be of assistance to you but the State of Victoria and its employees do not guarantee that the publication is without flaw of any kind or is wholly appropriate for your particular purposes and therefore disclaims all liability for any error, loss or other consequence which may arise from you relying on any information in this publication.

© The State of Victoria Department of Environment, Land, Water and Planning 2018

A horizontal number line representing distance in meters. It starts at 0 on the left and ends at 900 on the right. There are major tick marks at 0, 150, 300, 450, 600, 750, and 900. The number '450' is written above the tick mark at 450. The word 'Meters' is written below the line.

Australian Map Grid Zone 55



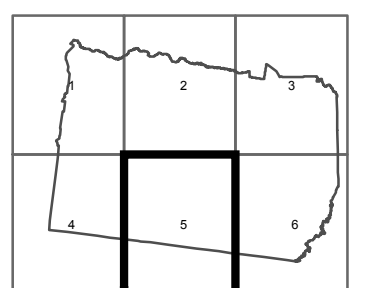
Planning Group

Printed: 3/04/2019



Environment,
Land, Water
and Planning

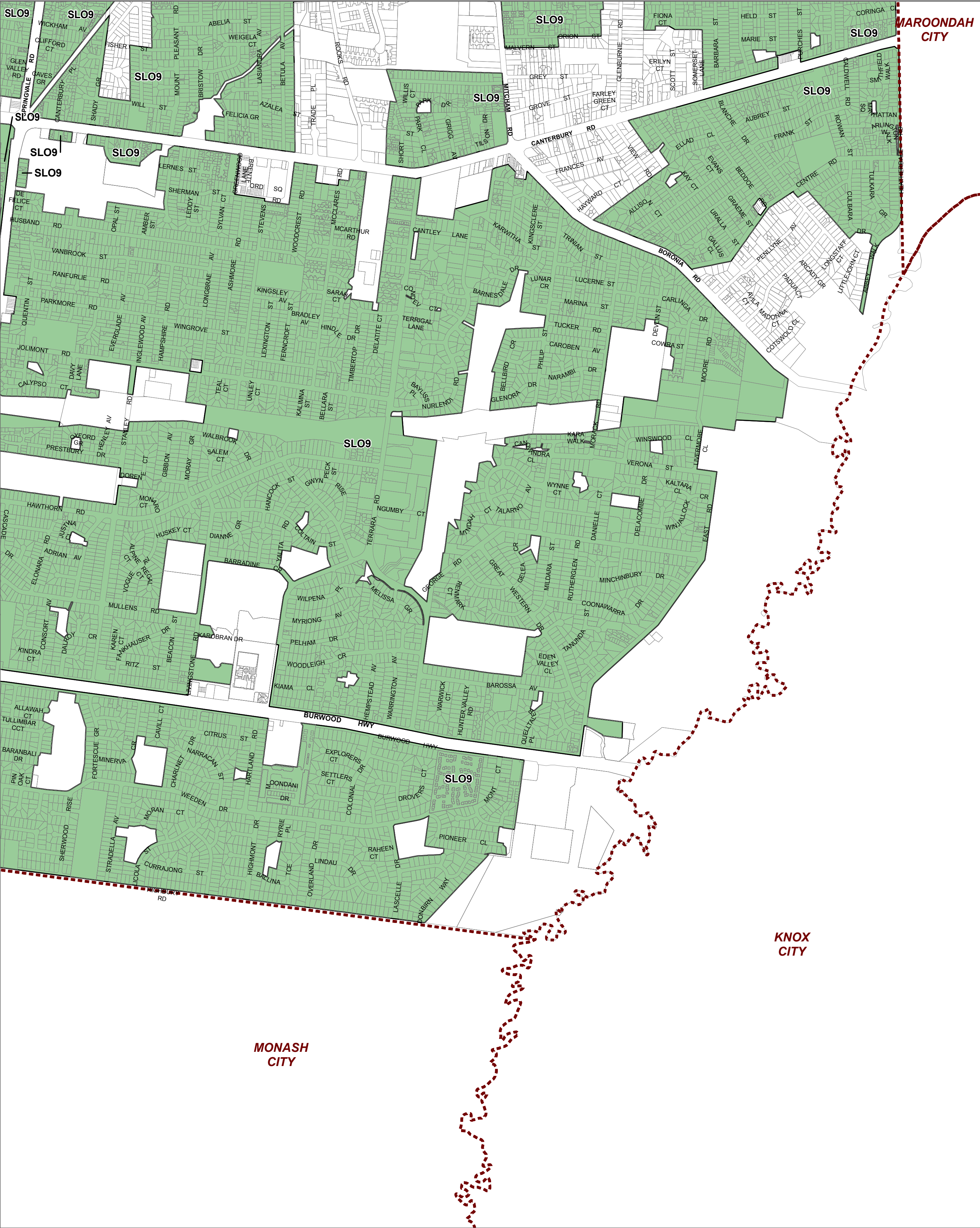
INDEX TO ADJOINING SCHEME MAPS



SIGNIFICANT LANDSCAPE OVERLAY

MAP No 5SLO

WHITEHORSE PLANNING SCHEME - LOCAL PROVISION
AMENDMENT C219



LEGEND

SLO9 - Significant Landscape Overlay - Schedule 9

Municipal Boundary

Disclaimer

This publication may be of assistance to you but the State of Victoria and its employees do not guarantee that the publication is without flaw of any kind or is wholly appropriate for your particular purposes and therefore disclaims all liability for any error, loss or other consequence which may arise from you relying on any information in this publication.

© The State of Victoria Department of Environment, Land, Water and Planning 2018

0 450 900

Meters

Australian Map Grid Zone 55

NORTH

Planning Group

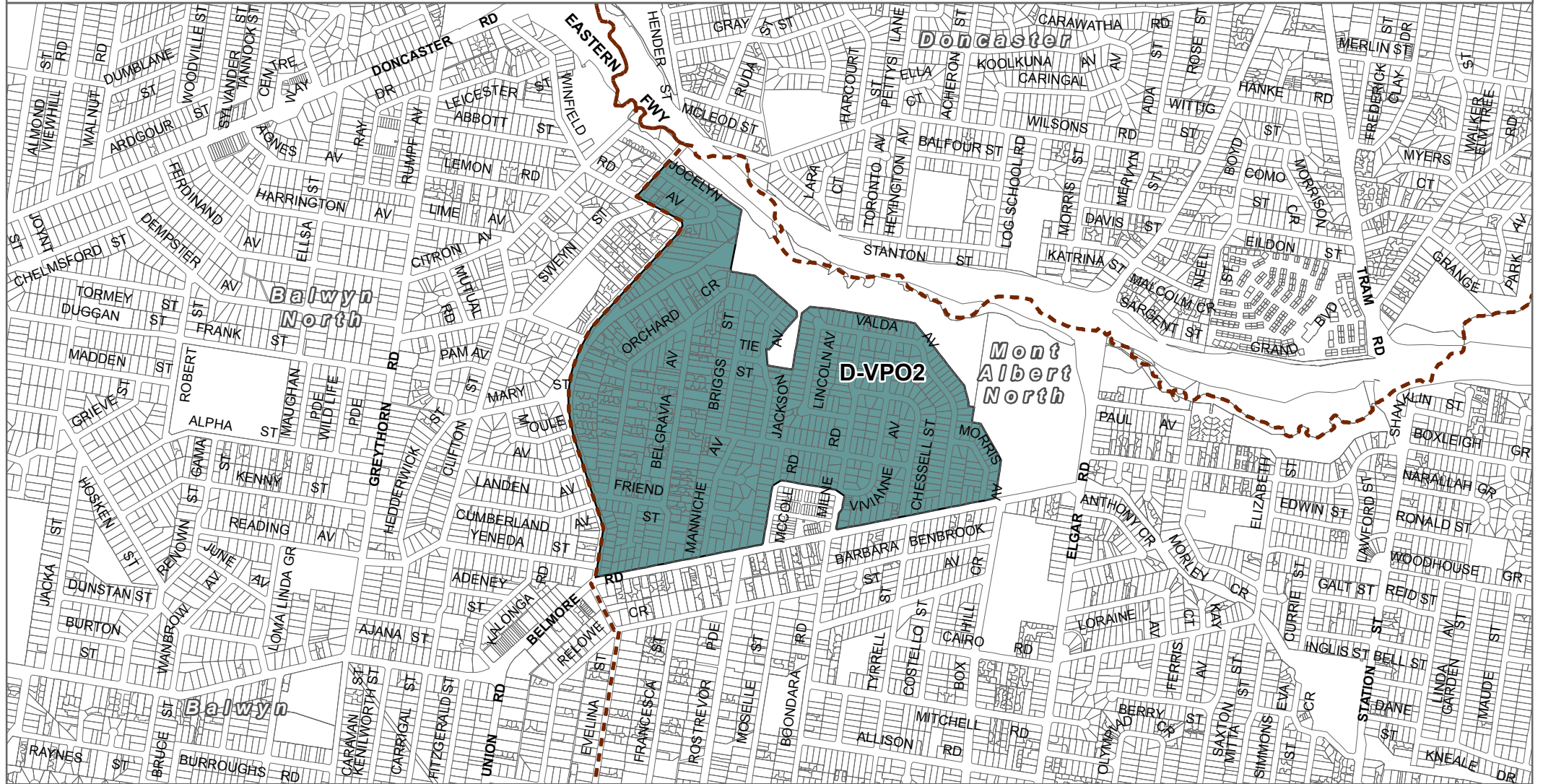
Printed: 3/04/2019

VICTORIA
State Government

Environment,
Land, Water
and Planning

INDEX TO ADJOINING SCHEME MAPS

WHITEHORSE PLANNING SCHEME - LOCAL PROVISION AMENDMENT C219



LEGEND

- D-VPO - Area to be deleted from a Vegetation Protection Overlay
- Local Government Area

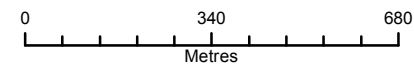
Disclaimer

This publication may be of assistance to you but the State of Victoria and its employees do not guarantee that the publication is without flaw of any kind or is wholly appropriate for your particular purposes and therefore disclaims all liability for any error, loss or other consequence which may arise from you relying on any information in this publication.

© The State of Victoria Department of Environment, Land, Water and Planning 2018

Planning Group

Print Date: 3/04/2019



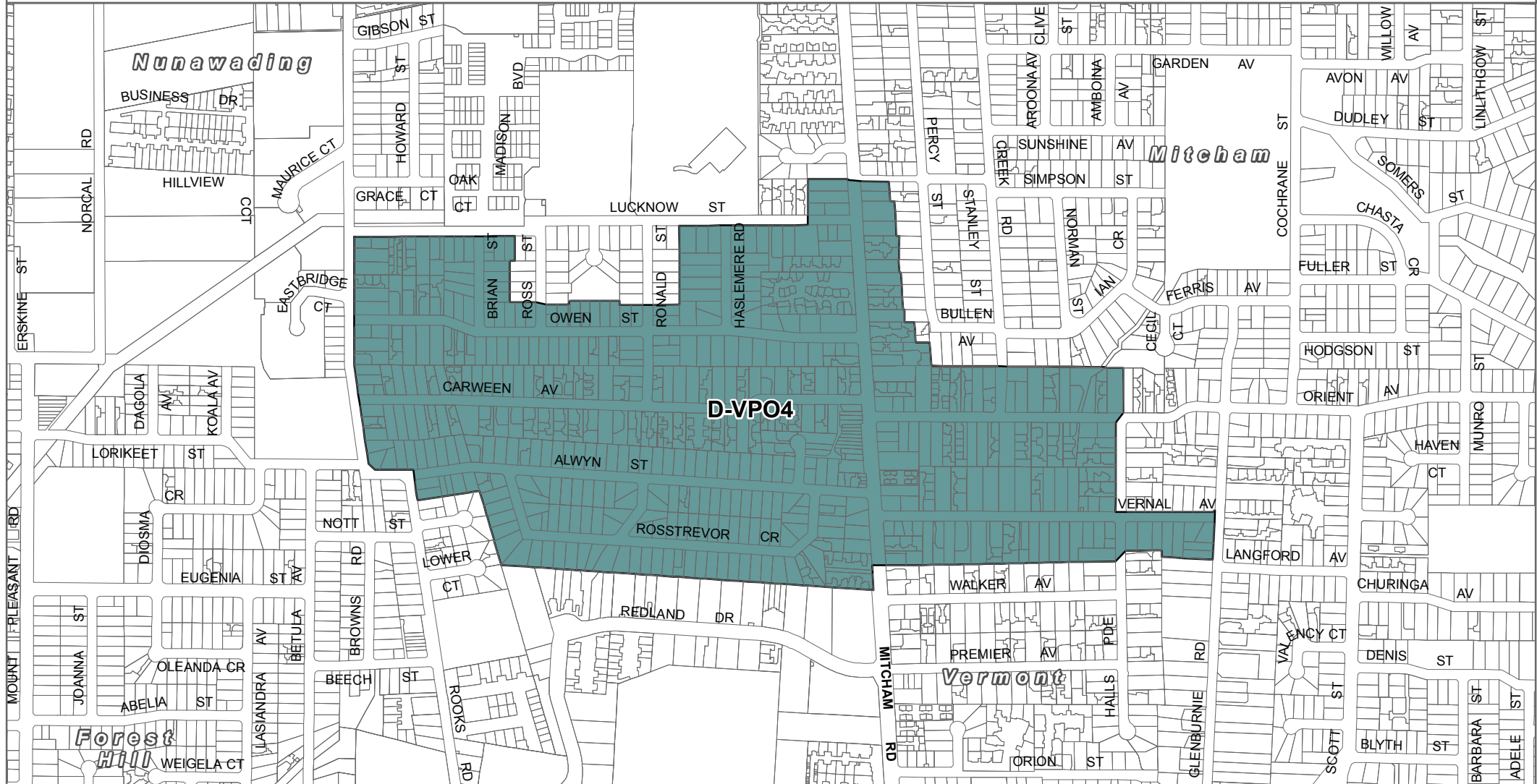
Environment,
Land, Water
and Planning

Part of Planning Scheme Map 1VPO



WHITEHORSE PLANNING SCHEME - LOCAL PROVISION

AMENDMENT C219



LEGEND

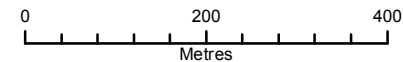
- D-VPO - Area to be deleted from a Vegetation Protection Overlay
- Local Government Area

Disclaimer
This publication may be of assistance to you but the State of Victoria and its employees do not guarantee that the publication is without flaw of any kind or is wholly appropriate for your particular purposes and therefore disclaims all liability for any error, loss or other consequence which may arise from you relying on any information in this publication.

© The State of Victoria Department of Environment, Land, Water and Planning 2018

Planning Group

Print Date: 3/04/2019



Environment,
Land, Water
and Planning

Part of Planning Scheme Map 3VPO

